

Excellent Integrated System Limited

Stocking Distributor

Click to view price, real time Inventory, Delivery & Lifecycle Information:

[FCI](#)
[51940-326LF](#)

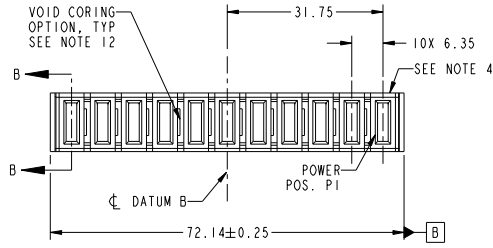
For any questions, you can email us directly:
sales@integrated-circuit.com

Tous droits strictement réservés. Reproduction ou communication à des tiers interdite sous quelque forme que ce soit sans autorisation écrite du propriétaire. Propriété de E.C.I. Droits de reproduction FCI.

All rights strictly reserved. Reproduction or issue to third parties in any form whatever is not permitted without written authority from the proprietor. Property of FCI. Copyright FCI.



PRODUCT NO. 51940-326-- NOTE: 3	POWER										
	P11	P10	P9	P8	P7	P6	P5	P4	P3	P2	P1
	PC	PC	PC	PC	X	X	X	PC	PC	PC	PC



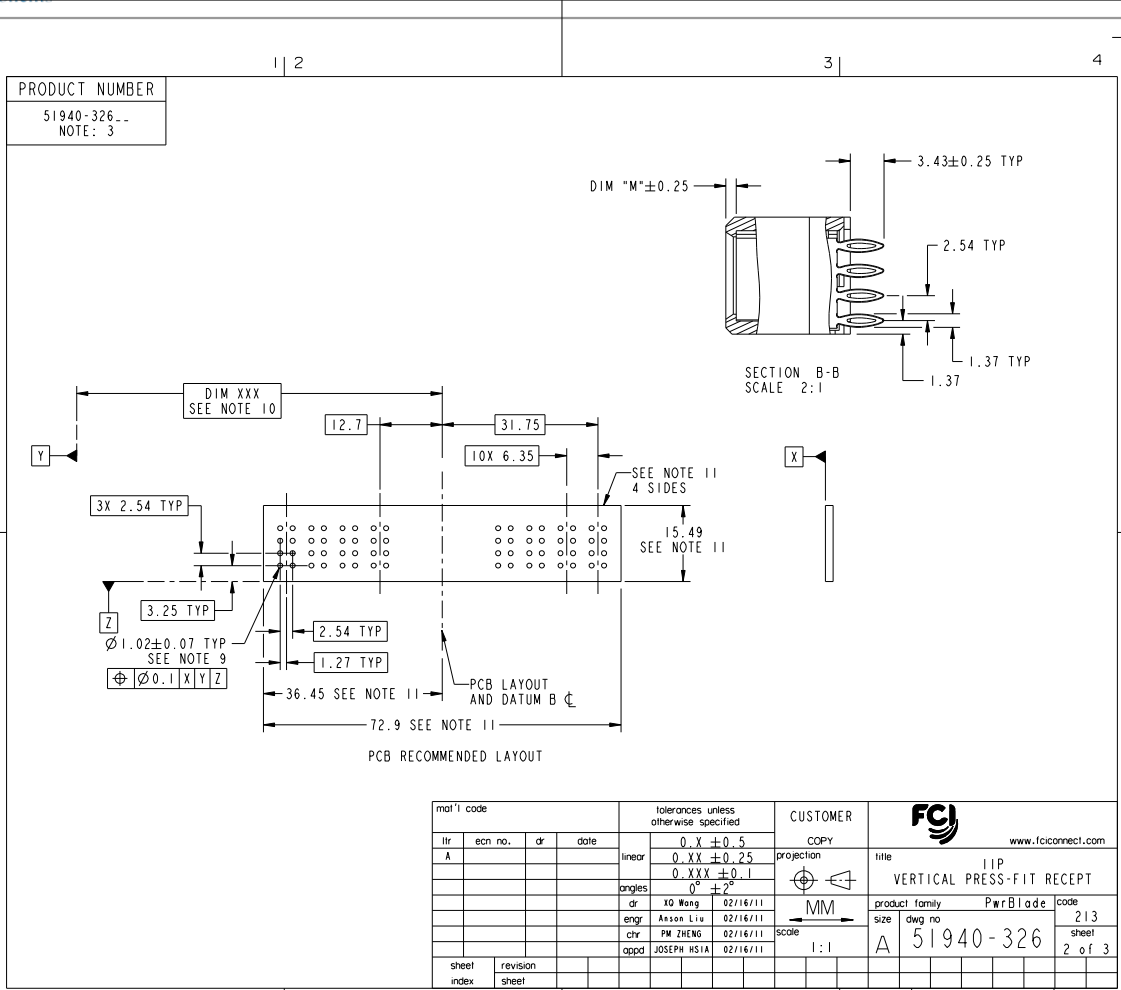
CODE	DIM "M" MATING LENGTH	CONTACT TYPE
PC	[1.07]	POWER
X	OMITTED	OMITTED

SEE NOTES				tolerances unless otherwise specified		CUSTOMER	
ltr	ecm no.	dr	date	0.X	±0.5	www.fciconnect.com	
A	DG11-0040	X0	02/16/11	0.XX	±0.25	COPY	
				0.XXX	±0.1	title	
				angles	0° ±2°	VERTICAL PRESS-FIT RECEIPT	
				dr	X0 Wang 02/16/11	product family PwrBlade	
				enr	Anson Liu 02/16/11	code 213	
				chr	PM ZHENG 02/16/11	size dwg no	
				oppd	JOSEPH HSIA 02/16/11	A 51940-326	
sheet index	revision sheet	A 1	A 2	A 3		scale 1:1	
						cage code 22526	

Tous droits strictement réservés. Reproduction ou communication à des tiers interdite sous quelque forme que ce soit sans autorisation écrite du propriétaire. Propriété de FCI. Droits de reproduction FCI.



All rights strictly reserved. Reproduction or issue to third parties in any form whatever is not permitted without written authority from the proprietor. Property of FCI. Copyright FCI.



mat'l code				tolerances unless otherwise specified				CUSTOMER		FCI		www.fciconnect.com	
lfr	ecm no.	dr	date	linear	0.X ±0.5	COPY		projection		title		IIP	
A					0.XX ±0.25	MM		MM		VERTICAL PRESS-FIT RECEPT			
				angles	0° ±2°	scale		1:1		product family		PwrBlade	
				dr	XQ Wang 02/16/11	size		A		dwg no		51940-326	
				enrg	Anson Liu 02/16/11	sheet		213		code		2 of 3	
				chr	PM ZHENG 02/16/11	sheet		2 of 3		code		22526	
				oppd	JOSEPH HSIA 02/16/11	sheet		2 of 3		code		22526	
sheet index	revision sheet												

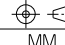
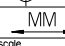
Tous droits strictement réservés. Reproduction ou communication à des tiers interdite sous quelque forme que ce soit sans autorisation écrite du propriétaire. Propriété de FCI. Droits de reproduction FCI.

All rights strictly reserved. Reproduction or issue to third parties in any form whatever is not permitted without written authority from the proprietor. Property of FCI. Copyright FCI.

PRODUCT NUMBER
 51940-326__
 NOTE: 3

NOTES:

1. DIMENSIONS AND TOLERANCES ARE IN ACCORDANCE WITH ASME Y14.5M, 1994 UNLESS OTHERWISE SPECIFIED.
- CONNECTOR NOTES:
- ② HOUSING MATERIAL: UL 94 V-0 GLASS FILLED HIGH-TEMP THERMOPLASTIC
 POWER CONTACT MATERIAL: COPPER ALLOY
 SIGNAL PIN MATERIAL: COPPER ALLOY
3. PLATING SPEC.
 SEE ITEM 7 & 8 IN PRINT 10064183 FOR PLATING SPEC. OF 51940-326, 51940-326LF RESPECTIVELY.
- ④ MANUFACTURER'S NAME, DATE CODE AND OPTIONAL P/N TO APPEAR ON THIS SURFACE. THE P/N CAN BE OMITTED IF THERE IS NOT ENOUGH SPACE ON THIS SURFACE.
5. PRODUCT SPECIFICATION GS-12-149.
 APPLICATION SPECIFICATION BUS-20-067.
6. PACKAGED IN TRAYS.
- PCB NOTES:
7. ALL HOLE DIAMETERS ARE FINISHED HOLE SIZE.
- ⑧ MOUNTING HOLES, WHERE APPLICABLE, ARE UNPLATED.
- ⑨ $\varnothing 1.151 \pm 0.025$ DRILLED HOLES PLATED WITH 0.008 MIN SnPb OR Sn OVER 0.03 TO 0.08 Cu PLATING TO ACHIEVE $\varnothing 1.02 \pm 0.07$ HOLE.
- ⑩ "DIM XXX" TO BE DETERMINED BY THE CUSTOMER.
- ⑪ CONNECTOR KEEP-OUT ZONE.
12. THE VOID CORING IN BETWEEN POWER MODULES, SIGNAL MODULES AND END MODULES ARE OPTIONAL AND THE SHAPE MAY BE DIFFERENT FOR OPTIMIZE THE MOLDING PROCESS. THE VOID CORING WILL NOT EFFECT TO PRODUCT FUNCTION.

mat'l code				tolerances unless otherwise specified		CUSTOMER		FCI	
ltr	ecm no.	dr	date	linear	0.X ± 0.5	COPY		www.fciconnect.com	
A				angles	0.XX ± 0.25	projection	title		
				dr	0.XXX ± 0.1			VERTICAL PRESS-FIT RECEPT	
				engr	0° ± 2°			product family	PwrBlade
				chr	XQ Wang 02/16/11	scale	size	dwg no	code
				oppd	Anson Liu 02/16/11	1:1	A	51940-326	213
sheet index	revision sheet				PM ZHENG 02/16/11				sheet 3 of 3
					JOSEPH HSIA 02/16/11				

Pro/E

cage code 22526