

## Excellent Integrated System Limited

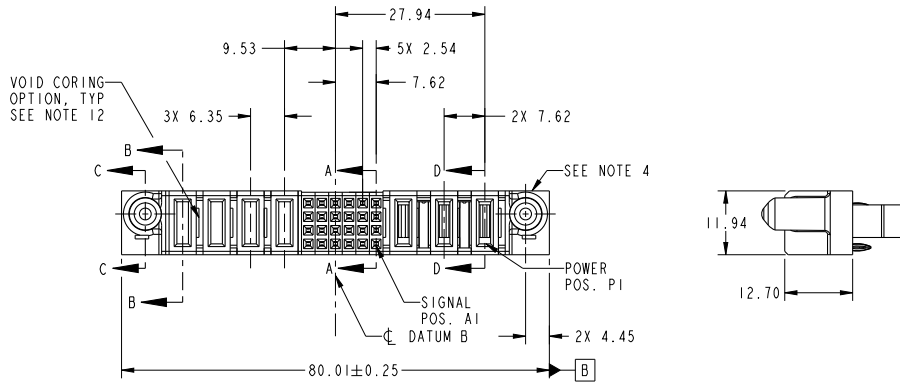
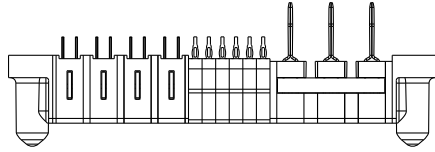
Stocking Distributor

Click to view price, real time Inventory, Delivery & Lifecycle Information:

[FCI](#)  
[51940-445LF](#)

For any questions, you can email us directly:  
[sales@integrated-circuit.com](mailto:sales@integrated-circuit.com)

PRODUCT NO.	ROWS	POWER				SIGNAL								POWER			E1			
		E2	P7	P6	P5	P4	6	5	4	3	2	1	P3	P2	P1					
51940-445-- NOTE: 3	D C B A																			



CODE	DIM "M" MATING LENGTH	CONTACT TYPE
PC	[1.07]	POWER
PF	[2.34]	POWER
F	[N/A]	SIGNAL
PG	[1.07]	POWER
PH	[2.34]	POWER

spec ref	SEE NOTES	dr	Ruan MT	2012/07/04	projection		MM	size	A4	scale	1:1	
tolerance std	TOLERANCES UNLESS OTHERWISE SPECIFIED	eng	Ruan MT	2014/05/15		product family	PwrBlade	ecn no	-	rel level	Released	
SEE NOTE		chr	-	-				rev	A			
surface	linear	0.X	±0.5		3ACP + 24S + 4P		www.fci.com	cat. no.	-	Product - Customer Drw	sheet 1 of 4	
		0.XX	±0.25		VERTICAL PF RECEPT							51940-445
		0.XXX	±0.1									
	angular	0°	±2°									

Prod File - REC - 2009-08-09

1

2

3

PDS: Rev :A

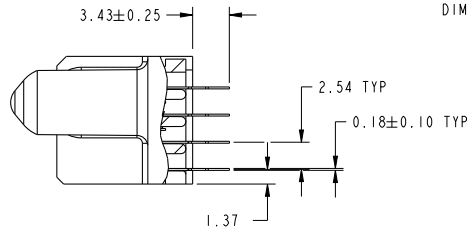
STATUS:Released

Printed: May 15, 2014

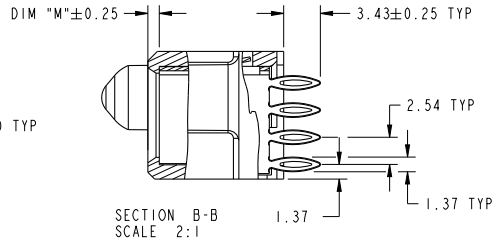


Copyright FCI.

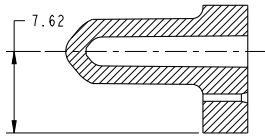
PRODUCT NUMBER  
51940-445...  
NOTE: 3



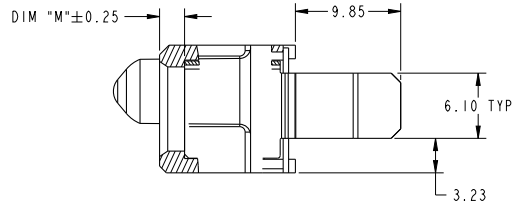
SECTION A-A  
SCALE 2:1



SECTION B-B  
SCALE 2:1



SECTION C-C  
SCALE 2:1



SECTION D-D  
SCALE 2:1

dr	Ruan MT	2012/07/04	projection	MM	size	A4	scale	1:1
eng	Ruan MT	2014/05/15			ecn no	-	rel level	
chr	-	-			product family	PwrBlade	Released	
appr	Pei-Ming Zheng	2014/05/15				rel level	Released	
			title 3ACP + 24S + 4P VERTICAL PF RECEPT			dwg no 51940-445	rev A	
cat. no.			-			Product - Customer Drw		sheet 2 of 4

Print File : REC - 2009-06-09

PDS: Rev :A

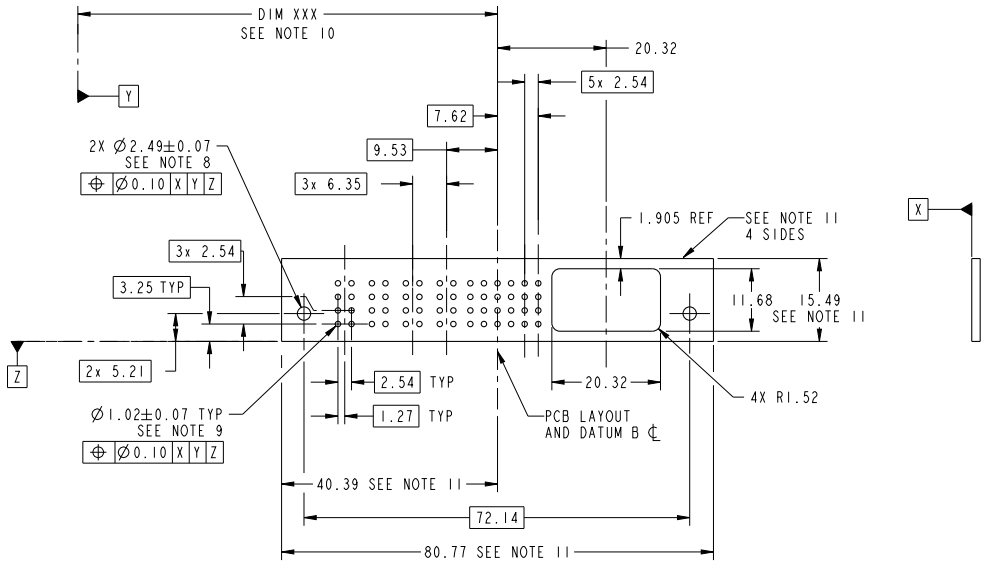
STATUS:Released

Printed: May 15, 2014



Copyright FCI.

PRODUCT NUMBER
51940-445_.. NOTE: 3



RECOMMENDED PCB LAYOUT

dr	Ruan MT	2012/07/04	projection	MM	size	A4	scale	1:1
eng	Ruan MT	2014/05/15			ecn no	-	rel level	Released
chr	-	-			product family	PwrBlade		
appr	Pei-Ming Zheng	2014/05/15			3ACP + 24S + 4P	cat. no. - Product - Customer Drw		rev A
www.fci.com			title VERTICAL PF RECEPT		dwg no 51940-445	sheet 3 of 4		

Print File : REC - 2009-06-09



Copyright FCI.

PRODUCT NUMBER  
51940-445-  
NOTE: 3

NOTES:

1. DIMENSIONS AND TOLERANCES ARE IN ACCORDANCE WITH ASME Y14.5M, 1994 UNLESS OTHERWISE SPECIFIED.

CONNECTOR NOTES:

- ② HOUSING MATERIAL: UL 94 V-0 GLASS FILLED HIGH-TEMP THERMOPLASTIC  
POWER CONTACT MATERIAL: COPPER ALLOY  
SIGNAL PIN MATERIAL: COPPER ALLOY
- 3. SEE ITEM 7 & 8 IN PRINT 10064183 FOR PLATING SPEC OF 51940-445 AND 51940-445LF RESPECTIVELY.

④ MANUFACTURER'S NAME, DATE CODE AND OPTIONAL P/N TO APPEAR ON THIS SURFACE. THE P/N CAN BE OMITTED IF THERE IS NOT ENOUGH SPACE ON THIS SURFACE.

5. PRODUCT SPECIFICATION GS-12-149.  
APPLICATION SPECIFICATION BUS-20-067.

6. PACKAGED IN TRAYS.

PCB NOTES:

7. ALL HOLE DIAMETERS ARE FINISHED HOLE SIZE.

⑧ MOUNTING HOLES, WHERE APPLICABLE, ARE UNPLATED.

⑨  $\varnothing 1.151 \pm 0.025$  DRILLED HOLES PLATED WITH  
0.008 MIN SnPb OR Sn OVER 0.03  
TO 0.08 Cu PLATING TO ACHIEVE  
 $\varnothing 1.02 \pm 0.07$  HOLE.

⑩ "DIM XXX" TO BE DETERMINED BY THE CUSTOMER.

⑪ CONNECTOR KEEP-OUT ZONE.

12. THE VOID CORING IN BETWEEN POWER MODULES, SIGNAL MODULES AND END MODULES ARE OPTIONAL AND THE SHAPE MAY BE DIFFERENT FOR OPTIMIZE THE MOLDING PROCESS. THE VOID CORING WILL NOT EFFECT TO PRODUCT FUNCTION.

dr	Ruan MT	2012/07/04	projection		MM	size	A4	scale	1:1	
eng	Ruan MT	2014/05/15	chr			-	ecn no	-		
appr	Pei-Ming Zheng	2014/05/15	product family	PwrBlade		rel level	Released			
			title	3ACP + 24S + 4P VERTICAL PF RECEPT		dwg no	51940-445		rev	A
www.fci.com			cat. no.	-			Product - Customer Drw		sheet 4 of 4	

Print File : REC - 2009-01-09



Copyright FCI.