

## Excellent Integrated System Limited

Stocking Distributor

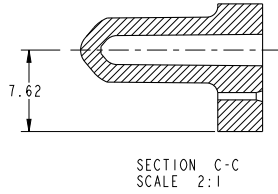
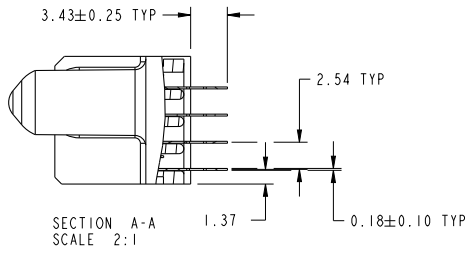
Click to view price, real time Inventory, Delivery & Lifecycle Information:

[FCI](#)  
[51940-491LF](#)

For any questions, you can email us directly:  
[sales@integrated-circuit.com](mailto:sales@integrated-circuit.com)



PRODUCT NUMBER  
51940-491...  
NOTE: 3



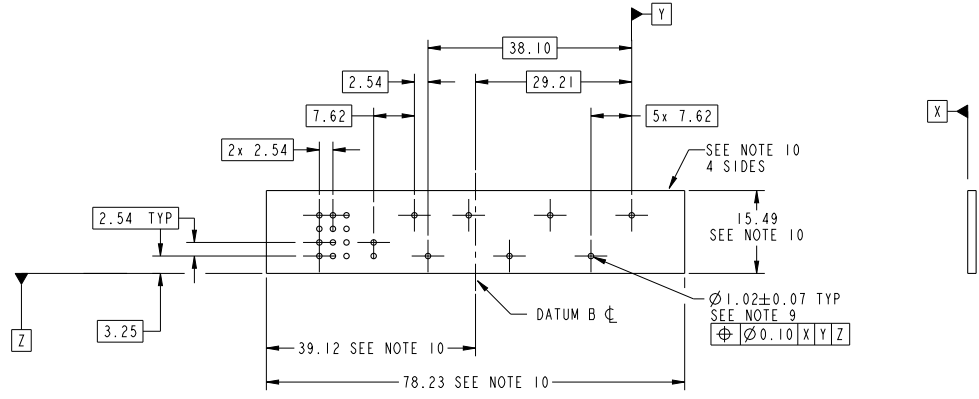
dr	Luo Weller	2013/04/23	projection	MM	size	A4	scale	1:1
eng	Luo Weller	2013/05/15			ecn no	-	rel level	
chr	-	-			product family	PwrBlade	Released	
appr	Pei-Ming Zheng	2013/05/15				title	96S	dwg no
www.fci.com			cat. no.			* Product - Customer Drw		sheet 2 of 4
						rev	51940-491	A

Print File : REC - 2009-06-09



Copyright FCI.

PRODUCT NUMBER  
51940-491...  
NOTE: 3



RECOMMENDED PCB LAYOUT

dr	Luo Weller	2013/04/23	projection	MM	size	A4	scale	1:1	
eng	Luo Weller	2013/05/15			ecn no	-	rel level		
chr	-	-			product family	PwrBlade	Released		
appr	Pei-Ming Zheng	2013/05/15				title	96S	dwg no	51940-491
www.fci.com			cat. no.			* Product - Customer Drw		rev	A

Prod File - REC - 2009-06-09

Copyright FCI.

PRODUCT NUMBER  
51940-491LF  
NOTE: 3

- NOTES:
1. DIMENSIONS AND TOLERANCES ARE IN ACCORDANCE WITH ASME Y14.5M, 1994 UNLESS OTHERWISE SPECIFIED.
- CONNECTOR NOTES:
- 2 HOUSING MATERIAL: UL 94 V-0 GLASS FILLED HIGH-TEMP THERMOPLASTIC  
POWER CONTACT MATERIAL: COPPER ALLOY  
SIGNAL PIN MATERIAL: COPPER ALLOY
  3. SEE ITEM 7 & 8 IN PRINT 10064183 FOR PLATING SPEC OF 51940-491 AND 51940-491LF RESPECTIVELY.
  - 4 MANUFACTURER'S NAME, DATE CODE AND OPTIONAL P/N TO APPEAR ON THIS SURFACE. THE MARK CAN BE OMITTED IF THERE IS NOT ENOUGH SPACE ON THIS SURFACE.
  5. PRODUCT SPECIFICATION GS-12-149.  
APPLICATION SPECIFICATION BUS-20-067.
  6. PACKAGED IN TRAYS.
- PCB NOTES:
7. ALL HOLE DIAMETERS ARE FINISHED HOLE SIZE.
  - 8 MOUNTING HOLES, WHERE APPLICABLE, ARE UNPLATED.
  - 9  $\varnothing 1.151 \pm 0.025$  DRILLED HOLES PLATED WITH 0.008 MIN SnPb OR Sn OVER 0.03 TO 0.08 Cu PLATING TO ACHIEVE  $\varnothing 1.02 \pm 0.07$  HOLE.
  - 10 CONNECTOR KEEP-OUT ZONE.
11. THE VOID CORING IN BETWEEN POWER MODULES, SIGNAL MODULES AND END MODULES ARE OPTIONAL AND THE SHAPE MAY BE DIFFERENT FOR OPTIMIZE THE MOLDING PROCESS. THE VOID CORING WILL NOT EFFECT TO PRODUCT FUNCTION.



Copyright FCI.

dr	Luo Weller	2013/04/23	projection	MM	size	A4	scale	1:1	
eng	Luo Weller	2013/05/15			ec n no	-	rel level		Released
chr	-	-	product family		PwrBlade				
appr	Pei-Ming Zheng	2013/05/15	www.fci.com		cat. no.	*	Product - Customer Drw	sheet 4 of 4	
		title	96S		dwg no	51940-491		rev	A
		VERTICAL PRESS-FIT RECEPT							

Print File: REC - 2009-06-09