

Excellent Integrated System Limited

Stocking Distributor

Click to view price, real time Inventory, Delivery & Lifecycle Information:

[FCI](#)

[51952-025LF](#)

For any questions, you can email us directly:

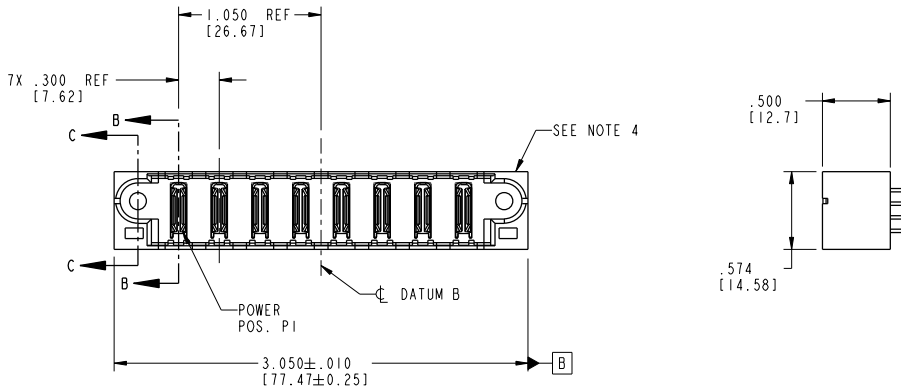
sales@integrated-circuit.com

Tous droits strictement réservés. Reproduction ou communication à des tiers interdite sans autorisation écrite du propriétaire. Propriété de c FCI. Droits de reproduction FCI.



All rights strictly reserved. Reproduction or issue to third parties in any form whatever is not permitted without written authority from the proprietor. Property of FCI. Copyright FCI.

PRODUCT NO.	POWER								E2	
	E1	P1	P2	P3	P4	P5	P6	P7		P8
51952-025..										



CODE	DIM "M" MATING LENGTH	CONTACT TYPE
PA	N/A [N/A]	POWER

mat'l code		SEE NOTE 2	tolerances unless otherwise specified	CUSTOMER		www.fciconnect.com
itr	ecm no.	dr	date	COPY	title	8P
A	V03-0735	MEM	6/30/03	linear	$.XX\pm .005/0.XX\pm 0.13$	projection
B	D605-0481	Ryan	11/23/05	angles	$.XX\pm .002/0.XX\pm 0.051$	$0^\circ \pm 7^\circ$
dr	N. MOSTOLLER	6/30/03	INCH/MM	product family	PwrBlade	code
eng	N. MOSTOLLER	6/30/03	scale	size	dwg no	213
chr	H. BREWAKER	6/30/03	1:1	sheet	1 of 4	
appd	N. MOSTOLLER	6/30/03				
sheet index	revision sheet	B 1	B 2	B 3	B 4	

Pro/E

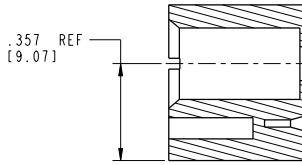
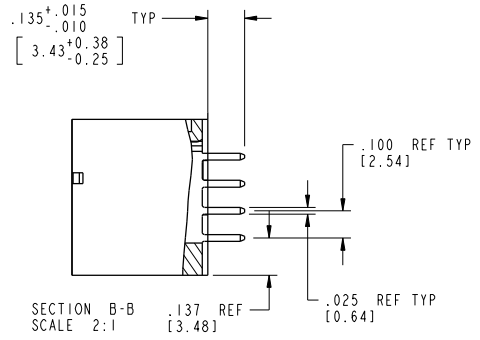
cage code 22526

Tous droits strictement réservés. Reproduction ou communication à des tiers interdite sous quelque forme que ce soit sans autorisation écrite du propriétaire. Propriété de c FCI. Droits de reproduction FCI.

FCI

All rights strictly reserved. Reproduction or issue to third parties in any form whatever is not permitted without written authority from the proprietor. Property of FCI. Copyright FCI.

PRODUCT NUMBER
51952-025..



SECTION C-C
SCALE 2:1

mal't code		SEE NOTE 2		tolerances unless otherwise specified		CUSTOMER		FCI www.fciconnect.com		
itr	ecm no.	dr	date	linear	projection	COPY		title		
B				.XX±.01/0.X±0.3	⊕	8P		VERTICAL SOLDER HEADER		
				.XX±.005/0.XX±0.13		product family		code		
				.XX±.002/0.XX±0.051		PwrBlade		213		
		dr	M. MOSTOLLER	6/30/03	INCH/MM		size		sheet	
		eng	M. MOSTOLLER	6/30/03	scale		51952-025		2 of 4	
		chr	H. BREWAKER	6/30/03	1:1		A			
		appd	M. MOSTOLLER	6/30/03						
sheet index	revision sheet									

Pro/E

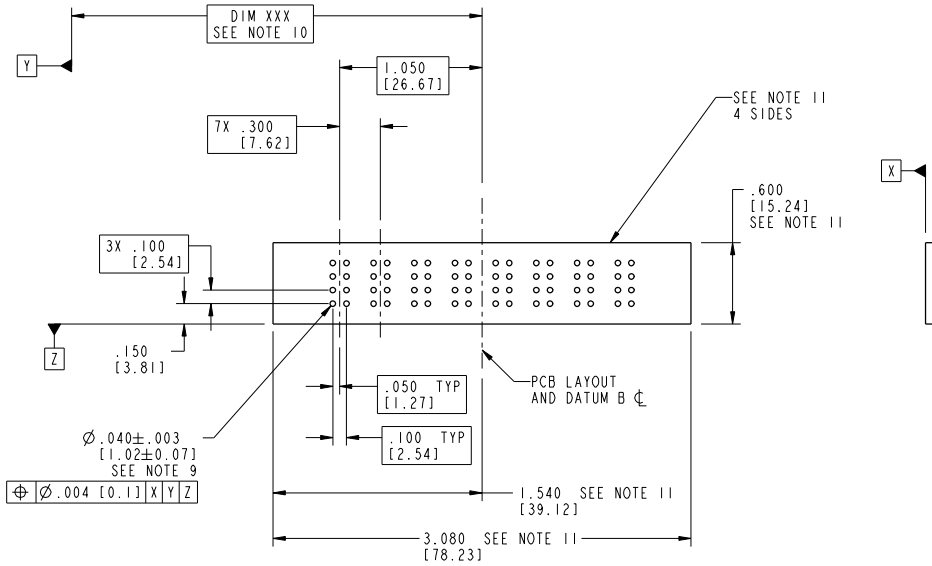
cage code 22526

Tous droits strictement réservés. Reproduction ou communication à des tiers interdite sous quelque forme que ce soit sans autorisation écrite du propriétaire. Propriété de c FCI. Droits de reproduction FCI.



All rights strictly reserved. Reproduction or issue to third parties in any form whatever is not permitted without written authority from the proprietor. Property of FCI. Copyright FCI.

PRODUCT NUMBER
51952-025..



mat'l code		SEE NOTE 2		tolerances unless otherwise specified		CUSTOMER		FCI www.fciconnect.com	
itr	ecm no.	dr	date	linear	projection	COPY		title	
B				$.XX \pm .01 / 0.X \pm 0.3$	$.XX \pm .005 / 0.X \pm 0.13$	INCH/MM		8P	
				angles	$.XX \pm .0020 / 0.X \pm 0.051$	A		VERTICAL SOLDER HEADER	
				dr	M. MOSTOLLER 6/30/03	scale		product family	
				eng	M. MOSTOLLER 6/30/03	1:1		PwrBlade	
				chr	H. BREWBAKER 6/30/03			code	
				appd	M. MOSTOLLER 6/30/03			213	
sheet index	revision sheet							size	
								dwg no	
								A 51952-025	
								sheet	
								3 of 4	
								cage code	
								22526	

Pro/E

Tous droits strictement réservés. Reproduction ou communication à des tiers interdite sans chaque forme que ce soit sans autorisation écrite du propriétaire. Propriété de c FCI. Droits de reproduction FCI.

FCI

All rights strictly reserved. Reproduction or issue to third parties in any form whatever is not permitted without written authority from the proprietor. Property of FCI. Copyright FCI.

PRODUCT NUMBER
51952-025..

NOTES:

1. DIMENSIONS AND TOLERANCES ARE IN ACCORDANCE WITH ASME Y14.5M, 1994 UNLESS OTHERWISE SPECIFIED.

CONNECTOR NOTES:

- ② HOUSING MATERIAL: UL 94 V-0 GLASS FILLED HIGH-TEMP THERMOPLASTIC
 POWER CONTACT MATERIAL: COPPER ALLOY
 SIGNAL PIN MATERIAL: COPPER ALLOY

3. PLATING:

51952-025: SIGNAL PIN: 30u"/0.76um Au OVER 50u"/1.27um Ni ON THE CONTACT AREA
 AND 100u"/2.54um SnPb OVER 50u"/1.27um Ni ON THE TERMINATION AREA
 POWER PIN: 30u"/0.76um Au OVER 50u"/1.27um Ni ON THE CONTACT AREA
 AND 100u"/2.54um SnPb OVER 50u"/1.27um Ni ON THE TERMINATION AREA

51952-025LF: SIGNAL PIN: 30u"/0.76um Au OVER 50u"/1.27um Ni ON THE CONTACT AREA
 AND 78u"/2.00um Sn OVER 50u"/1.27um Ni ON THE TERMINATION AREA
 POWER PIN: 30u"/0.76um Au OVER 50u"/1.27um Ni ON THE CONTACT AREA
 AND 78u"/2.00um Sn OVER 50u"/1.27um Ni ON THE TERMINATION AREA

PART NUMBER 51952-025LF MEETS EUROPEAN UNION DIRECTIVE AND OTHER COUNTRY REGULATIONS AS DECCRIBED IN GS-22-008.

THE HOUSING WILL WITHSTAND EXPOSURE TO 260° PEAK TEMPERATURE FOR 10 SECONDS IN A WAVE SOLDER APPLICATION WITH A CIRCUIT BOARD.

- ④ MANUFACTURER'S NAME, P/N, AND DATE CODE TO APPEAR ON THIS SURFACE.

5. PRODUCT SPECIFICATION GS-12-149.
 APPLICATION SPECIFICATION BUS-20-067.

6. PACKAGED IN TRAYS.

PCB NOTES:

- 7. ALL HOLE DIAMETERS ARE FINISHED HOLE SIZE.
- 8. MOUNTING HOLES, WHERE APPLICABLE, ARE UNPLATED.

- ⑨ $\varnothing .0453 \pm .0010$ [1.151 ± 0.025] DRILLED HOLES PLATED WITH
 .0003 [0.008] MIN SnPb OVER .001 [0.03]
 TO .003 [0.08] Cu PLATING TO ACHIEVE
 $\varnothing .040 \pm .003$ [1.02 ± .07] HOLE.

- ⑩ "DIM XXX" TO BE DETERMINED BY THE CUSTOMER.

- ⑪ CONNECTOR KEEP-OUT ZONE.

mat'l code		SEE NOTE 2		tolerances unless otherwise specified		CUSTOMER		www.fciconnect.com	
itr	ecm no.	dr	date	linear	projection	COPY		title	8P
B				.XX ± .01 / 0.X ± 0.3	.XX ± .005 / 0.X ± 0.13			VERTICAL SOLDER HEADER	code 213
				angles	.XX ± .0020 / 0.X ± 0.051			product family	PwrBlade
				dr	M. MOSTOLLER 6/30/03	INCH/MM		size	dwg no
				eng	M. MOSTOLLER 6/30/03	scale		A	51952-025
				chr	H. BREWBAKER 6/30/03	1:1		sheet	4 of 4
				appd	M. MOSTOLLER 6/30/03			revision	
sheet index	revision sheet								

Pro/E

3 |

cage code 22526

4