

## Excellent Integrated System Limited

Stocking Distributor

Click to view price, real time Inventory, Delivery & Lifecycle Information:

[FCI](#)  
[51952-111LF](#)

For any questions, you can email us directly:  
[sales@integrated-circuit.com](mailto:sales@integrated-circuit.com)

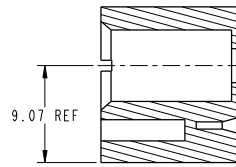
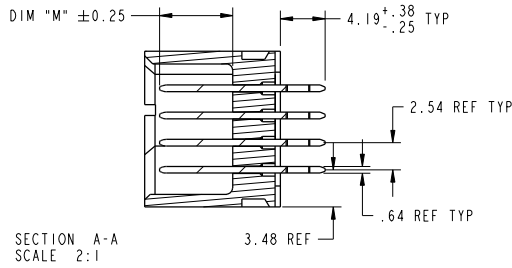


Tous droits strictement réservés. Reproduction ou communication à des tiers interdite sous quelque forme que ce soit sans autorisation écrite du propriétaire. Propriété de FCI. Droits de reproduction FCI.



All rights strictly reserved. Reproduction or issue to third parties in any form whatever is not permitted without written authority from the proprietor. Property of FCI. Copyright FCI.

PRODUCT NUMBER  
51952-111...  
NOTE 3



mat'l code				tolerances unless otherwise specified		CUSTOMER		www.fciconnect.com	
ltr	ecm no.	dr	date	linear	0.X ±0.3	COPY		title	
B				linear	0.XX ±0.13	projection	48S	VERTICAL PRESS-FIT HEADER	
				angles	0.XXX ±0.051			product family	PwrBlade
				dr	0° ±2°	MM	size	code	213
				engr	JM GUO 01/12/07	scale	A	sheet	2 of 4
				chr	RYAN TUAN 01/12/07	1:1	51952-111		
				appd	BEER FU 01/12/07				
					JOSEPH HSIA 01/12/07				
sheet index	revision sheet							cage code	22526

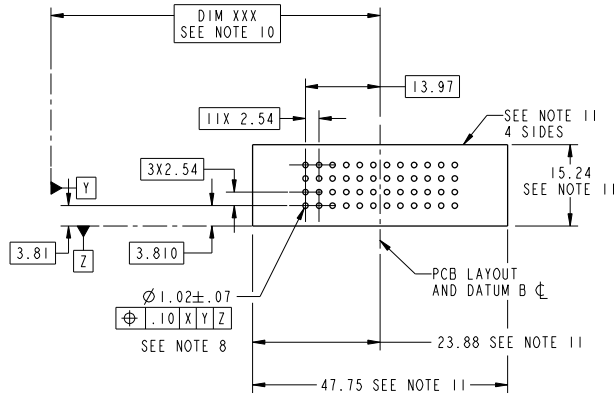
Pro/E

Tous droits strictement réservés. Reproduction ou communication a des tiers interdite sous quelque forme que ce soit sans autorisation écrite du propriétaire. Propriété de c FCI. Droits de reproduction FCI.



All rights strictly reserved. Reproduction or issue to third parties in any form whatever is not permitted without written authority from the proprietor. Property of FCI. Copyright FCI.

PRODUCT NUMBER  
51952-111..  
NOTE 3



mat'l code				tolerances unless otherwise specified		CUSTOMER	
ltr	ecn no.	dr	date	linear	0.X ±0.3	COPY	www.fciconnect.com
B				linear	0.XX ±0.13	projection	
				angles	0° ±0.51		title
				dr	JM GUO 01/12/07		product family
				engr	RYAN TUAN 01/12/07	MM	VERTICAL PRESS-FIT HEADER
				chr	BEER FU 01/12/07	scale	PwrBlade
				appd	JOSEPH HSIA 01/12/07	1:1	code
sheet index	revision sheet						213
							sheet 3 of 4
							code
							22526

Pro/E

Tous droits strictement réservés. Reproduction ou communication à des tiers interdite sous quelque forme que ce soit sans autorisation écrite du propriétaire. Propriété de c FCI. Droits de reproduction FCI.

All rights strictly reserved. Reproduction or issue to third parties in any form whatever is not permitted without written authority from the proprietor. Property of FCI. Copyright FCI.

<b>PRODUCT NUMBER</b>
51952-111LF NOTE 3

**NOTES:**

1. DIMENSIONS AND TOLERANCES ARE IN ACCORDANCE WITH ASME Y14.5M, 1994 UNLESS OTHERWISE SPECIFIED.

**CONNECTOR NOTES:**

- ② HOUSING MATERIAL: UL 94 V-0 GLASS FILLED HIGH-TEMP THERMOPLASTIC  
POWER CONTACT MATERIAL: COPPER ALLOY  
SIGNAL PIN MATERIAL: COPPER ALLOY
- 3. PLATING:  
51952-111 ,51952-111LF PLATING SPEC. WAS SHOWN IN THE PRINT OF 10064183.

④ MANUFACTURER'S NAME, P/N, AND DATE CODE TO APPEAR ON THIS SURFACE.

5. PRODUCT SPECIFICATION GS-12-149.  
APPLICATION SPECIFICATION BUS-20-067.

6. PACKAGED IN TRAYS.

**PCB NOTES:**


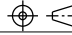

- 7. ALL HOLE DIAMETERS ARE FINISHED HOLE SIZE.
- 8. MOUNTING HOLES, WHERE APPLICABLE, ARE UNPLATED.

⑨  $\varnothing 1.151 \pm 0.025$  DRILLED HOLES PLATED WITH 0.008 MIN SnPb OR Sn OVER 0.03 TO 0.08 Cu PLATING TO ACHIEVE  $\varnothing 1.02 \pm .07$  HOLE.

⑩ "DIM XXX" TO BE DETERMINED BY THE CUSTOMER.

⑪ CONNECTOR KEEP-OUT ZONE.

12. FOR PRESS FIT APPLICATION USE FCI CAM TOOL 430169-XXX.

mat'l code				tolerances unless otherwise specified		CUSTOMER		 www.fciconnect.com	
ltr	ecn no.	dr	date	linear	0.X ± 0.3	COPY		title	
B				linear	0.XX ± 0.13	projection		48S	
				angles	0.XXX ± 0.051			VERTICAL PRESS-FIT HEADER	
				angles	0° ± 2°			product family PwrBlade	
				dr	JM GUO 01/12/07	scale		code 213	
				engr	RYAN TUAN 01/12/07	1:1		sheet 4 of 4	
				chr	BEER FU 01/12/07	A		size 51952-111	
				appd	JOSEPH HSIA 01/12/07			cage code 22526	
sheet index	revision sheet								