

Excellent Integrated System Limited

Stocking Distributor

Click to view price, real time Inventory, Delivery & Lifecycle Information:

[FCI](#)
[51952-147LF](#)

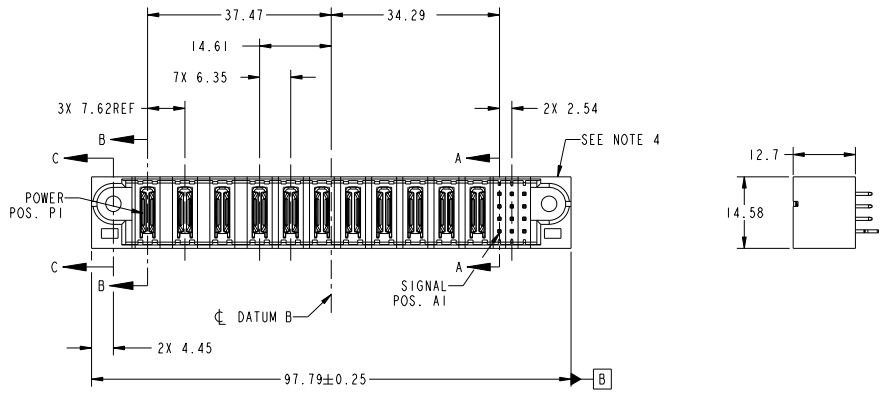
For any questions, you can email us directly:

sales@integrated-circuit.com

Tous droits strictement réservés. Reproduction ou communication a des tiers interdite sous quelque forme que ce soit sans autorisation écrite du propriétaire. Propriété de FCI. Droits de reproduction FCI.

All rights strictly reserved. Reproduction or issue to third parties in any form whatever is not permitted without written authority from the proprietor. Property of FCI. Copyright FCI.

PRODUCT NO.	ROWS	POWER											SIGNAL					
		E1	P1	P2	P3	P4	P5	P6	P7	P8	P9	P10	P11	1	2	3	E2	
51952-147- NOTE 3	D C B A																	



CODE	DIM "M" MATING LENGTH	CONTACT TYPE
PA	[N/A]	POWER
E	[6.86]	SIGNAL
HA	[N/A]	HOLD-DOWN

mat'l code				tolerances unless otherwise specified	
ltr	ecn no.	dr	date	linear	0.X ± 0.5
A	D009-0108	WD	04/09/09		0.XX ± 0.25
					0.XXX ± 0.1
				angles	0° ± 2°
		dr	Warren Du	04/06/09	
		enr	Warren Du	04/06/09	
		chr	PM ZHENG	04/06/09	
		oppd	JOSEPH HSTIA	04/06/09	

CUSTOMER		FCI	
COPY	www.fciconnect.com	projection	title
		MM	11P + 12S
scale	1:1	product family	VERTICAL SOLDER HEADER
		size	PwrBlade
		dwg no	code
		51952-147	213
			sheet
			1 of 4

sheet index	revision sheet	A	A	A	A	A	A	Prd/E	3	4
		1	2	3	4					

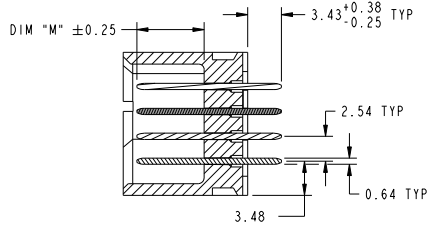
cage code	22526
-----------	-------

Tous droits strictement réservés. Reproduction ou communication à des tiers interdite sous quelque forme que ce soit sans autorisation écrite du propriétaire. Propriété de FCI. Droits de reproduction FCI.

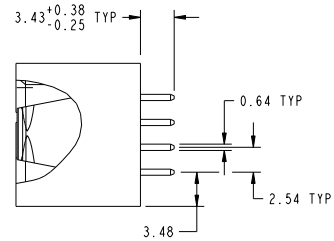
All rights strictly reserved. Reproduction or issue to third parties in any form whatever is not permitted without written authority from the proprietor. Property of FCI. Copyright FCI.



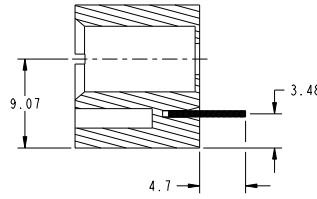
PRODUCT NUMBER
51952-147__
NOTE 3



SECTION A-A
SCALE 2:1



SECTION B-B
SCALE 2:1



SECTION C-C
SCALE 2:1

mat'l code				tolerances unless otherwise specified		CUSTOMER		FCI	
ltr	ecm no.	dr	date	linear	0.X ±0.5	COPY	www.fciconnect.com		
A					0.XX ±0.25	projection		title	
				angles	0.XXX ±0.1			IIP + 12S	
				dr	0° ±2°	MM		VERTICAL SOLDER HEADER	
				engr	Warren Du 04/06/09	scale		product family PwrBlade code	
				chr	Warren Du 04/06/09	1:1		size	
				opd	PM ZHENG 04/06/09			dwg no	
					JOSEPH HSTA 04/06/09			51952-147	
sheet index	revision sheet							213 sheet	
								2 of 4	

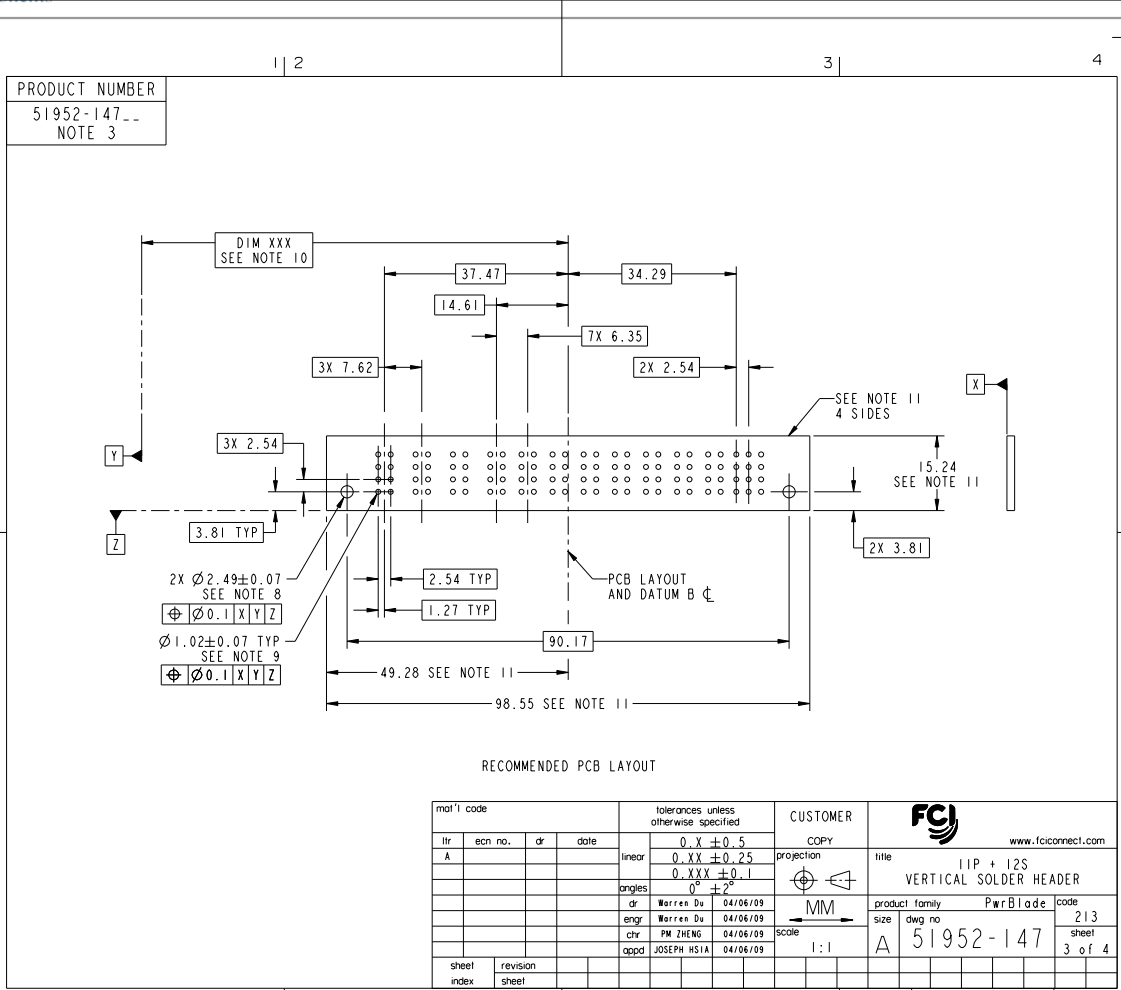
Pro/E

cage code 22526

Tous droits strictement réservés. Reproduction ou communication à des tiers interdite sous quelque forme que ce soit sans autorisation écrite du propriétaire. Propriété de FCI. Droits de reproduction FCI.



All rights strictly reserved. Reproduction or issue to third parties in any form whatever is not permitted without written authority from the proprietor. Property of FCI. Copyright FCI.



RECOMMENDED PCB LAYOUT

mat'l code				tolerances unless otherwise specified		CUSTOMER	
ltr	ecm no.	dr	date	linear	0.X ±0.5	COPY	www.fciconnect.com
A				angles	0.XX ±0.25	projection	title
				dr	0.XXX ±0.1	MM	11P + 12S
				engr	0° ±2°	scale	VERTICAL SOLDER HEADER
				chr		1:1	product family
				oppd			PwrBlade
sheet index	revision sheet			code			code
							213
							sheet
							3 of 4
							size
							dwg no
							51952-147
							cage code
							22526

Tous droits strictement réservés. Reproduction ou communication à des tiers interdite sous quelque forme que ce soit sans autorisation écrite du propriétaire. Propriété de FCI. Droits de reproduction FCI.

All rights strictly reserved. Reproduction or issue to third parties in any form whatever is not permitted without written authority from the proprietor. Property of FCI. Copyright FCI.

PRODUCT NUMBER
51952-147...
NOTE 3

NOTES:

1. DIMENSIONS AND TOLERANCES ARE IN ACCORDANCE WITH ASME Y14.5M, 1994 UNLESS OTHERWISE SPECIFIED.

CONNECTOR NOTES:

- ② HOUSING MATERIAL: UL 94 V-0 GLASS FILLED HIGH-TEMP THERMOPLASTIC
POWER CONTACT MATERIAL: COPPER ALLOY
SIGNAL PIN MATERIAL: COPPER ALLOY
- 3. SEE ITEM 1 & 2 IN PRINT 10064183 FOR PLATING SPEC OF 51952-147 AND 51952-147LF RESPECTIVELY.
- ④ MANUFACTURER'S NAME, P/N, AND DATE CODE TO APPEAR ON THIS SURFACE.
- 5. PRODUCT SPECIFICATION GS-12-149.
APPLICATION SPECIFICATION BUS-20-067.
- 6. PACKAGED IN TRAYS.
- PCB NOTES:
- 7. ALL HOLE DIAMETERS ARE FINISHED HOLE SIZE.
- 8. MOUNTING HOLES, WHERE APPLICABLE, ARE UNPLATED.
- ⑨ $\varnothing 1.151 \pm 0.025$ DRILLED HOLES PLATED WITH
0.008 MIN SnPb OR Sn OVER .001 (0.03)
TO 0.08 Cu PLATING TO ACHIEVE
 $\varnothing 1.02 \pm .07$ HOLE.
- ⑩ "DIM XXX" TO BE DETERMINED BY THE CUSTOMER.
- ⑪ CONNECTOR KEEP-OUT ZONE.

mat'l code				tolerances unless otherwise specified		CUSTOMER		FCI	
ltr	ecm no.	dr	date	linear	0.X ± 0.5	COPY	www.fciconnect.com		
A					0.XX ± 0.25	projection	title		
				angles	0.XXX ± 0.1		11P + 12S		
				dr	0° ± 2°	MM	VERTICAL SOLDER HEADER		
				engr	Warren Du 04/06/09	product family	PwrBlade	code	
				chr	Warren Du 04/06/09	size	dwg no	213	
				oppd	PM ZHENG 04/06/09	scale	51952-147	sheet	
					JOSEPH HSIA 04/06/09	1:1	A	4 of 4	
sheet index	revision sheet								

Pro/E

cage code 22526