

## Excellent Integrated System Limited

Stocking Distributor

Click to view price, real time Inventory, Delivery & Lifecycle Information:

[FCI](#)

[51952-158LF](#)

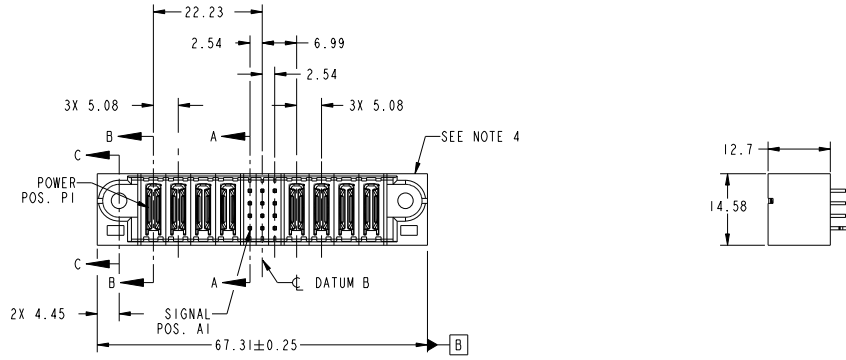
For any questions, you can email us directly:

[sales@integrated-circuit.com](mailto:sales@integrated-circuit.com)

Tous droits strictement réservés. Reproduction ou communication a des tiers interdite sous quelque forme que ce soit sans autorisation écrite du propriétaire. Propriété de E.FCI. Droits de reproduction FCI.

All rights strictly reserved. Reproduction or issue to third parties in any form whatever is not permitted without written authority from the proprietor. Property of FCI. Copyright FCI.

PRODUCT NO.	ROWS	POWER				SIGNAL	POWER				
		E1	P1	P2	P3	P4	P5	P6	P7	P8	E2
51952-158-- NOTE ③	D C B A	PA	PA	PA	PA	ET ET ET ET ET ET ET ET	PA	PA	PA	PA	



CODE	DIM "M" MATING LENGTH	CONTACT TYPE
PA	[N/A]	POWER
E	[6.86]	SIGNAL
HA	[N/A]	HOLD-DOWN
H	[5.59]	SIGNAL

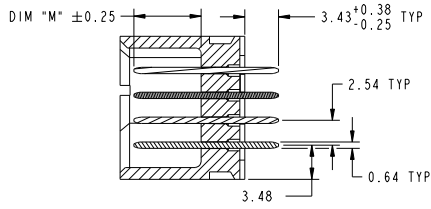
mat'l code				tolerances unless otherwise specified		CUSTOMER		FCI	
lfr	ecm no.	dr	date	linear	0.X ± 0.5	COPY		www.fciconnect.com	
A	DG09-0336	WD	10/28/09		0.XX ± 0.25	projection	title		
				angles	0.XXX ± 0.1	MM	4P + 12S + 4P		
				dr	0° ± 2°	MM	VERTICAL SOLDER HEADER		
				enr	Warren Du 10/19/09	MM	product family PwrBlade code		
				chr	Warren Du 10/19/09	MM	size		
				oppd	PM ZHENG 10/19/09	MM	dwg no		
					JOSEPH HSTA 10/19/09	MM	A 51952-158		
sheet index	revision sheet	A	A	A	A	scale	213 sheet		
1	2	3	4			1:1	1 of 4		

cage code 22526

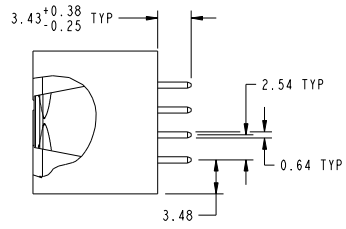
Tous droits strictement réservés. Reproduction ou communication à des tiers interdite sous quelque forme que ce soit sans autorisation écrite du propriétaire. Propriété de FCI. Droits de reproduction FCI.

All rights strictly reserved. Reproduction or issue to third parties in any form whatever is not permitted without written authority from the proprietor. Property of FCI. Copyright FCI.

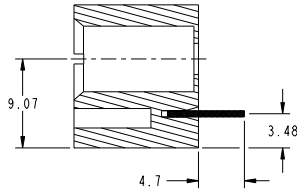
PRODUCT NUMBER  
51952-158...  
NOTE 3



SECTION A-A  
SCALE 2:1



SECTION B-B  
SCALE 2:1



SECTION C-C  
SCALE 2:1

mat'l code				tolerances unless otherwise specified		CUSTOMER		FCI	
ltr	ecm no.	dr	date	linear	0.X ±0.5	COPY	www.fciconnect.com		
A					0.XX ±0.25	projection		title	
				angles	0.XXX ±0.1			4P + 12S + 4P	
				dr	0° ±2°			VERTICAL SOLDER HEADER	
				enr	Warren Du 10/19/09	scale		product family	PwrBlade
				chr	Warren Du 10/19/09	1:1		size	code
				oppd	PM ZHENG 10/19/09			dwg no	213
					JOSEPH HSIA 10/19/09			51952-158	sheet
sheet index	revision sheet								2 of 4

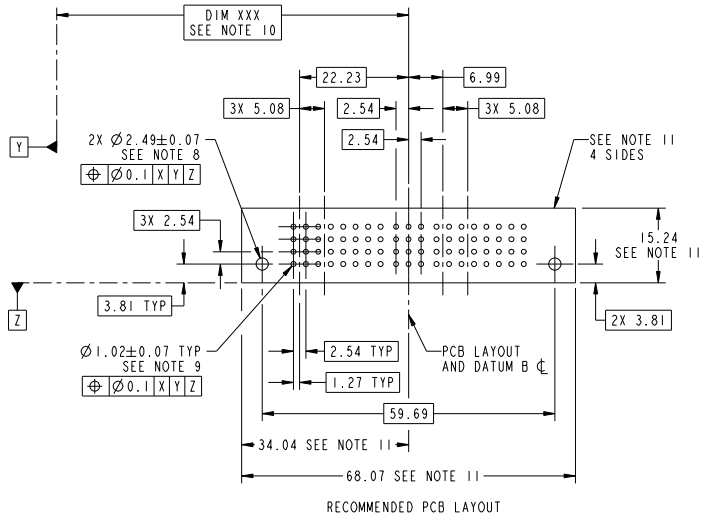
Pro/E

cage code 22526

Tous droits strictement réservés. Reproduction ou communication à des tiers interdite sous quelque forme que ce soit sans autorisation écrite du propriétaire. Propriété de FCI. Droits de reproduction FCI.

All rights strictly reserved. Reproduction or issue to third parties in any form whatever is not permitted without written authority from the proprietor. Property of FCI. Copyright FCI.

PRODUCT NUMBER  
51952-158...  
NOTE 3



mat'l code				tolerances unless otherwise specified		CUSTOMER	
lfr	ecm no.	dr	date	0.X ± 0.5	COPY	FCI www.fciconnect.com	
A				0.XX ± 0.25	projection	title 4P + 12S + 4P	
				0.XXX ± 0.1		VERTICAL SOLDER HEADER	
				angles 0° ± 2°		product family	PwrBlade
		dr	Warren Du	10/19/09	scale	size	dwg no
		engr	Warren Du	10/19/09	1:1	A	51952-158
		chr	PM ZHENG	10/19/09			213
		oppd	JOSEPH HSIA	10/19/09			sheet
sheet index	revision sheet						3 of 4

Pro/E

cage code 22526

Tous droits strictement réservés. Reproduction ou communication à des tiers interdite sous quelque forme que ce soit sans autorisation écrite du propriétaire. Propriété de FCI. Droits de reproduction FCI.

All rights strictly reserved. Reproduction or issue to third parties in any form whatever is not permitted without written authority from the proprietor. Property of FCI. Copyright FCI.

**PRODUCT NUMBER**

51952-158...  
NOTE 3

**NOTES:**

1. DIMENSIONS AND TOLERANCES ARE IN ACCORDANCE WITH ASME Y14.5M, 1994 UNLESS OTHERWISE SPECIFIED.

**CONNECTOR NOTES:**

- ② HOUSING MATERIAL: UL 94 V-0 GLASS FILLED HIGH-TEMP THERMOPLASTIC  
POWER CONTACT MATERIAL: COPPER ALLOY  
SIGNAL PIN MATERIAL: COPPER ALLOY
  - 3. SEE ITEM 1 & 2 IN PRINT 10064183 FOR PLATING SPEC OF 51952-158 AND 51952-158LF RESPECTIVELY.
  - ④ MANUFACTURER'S NAME, DATE CODE AND OPTIONAL P/N TO APPEAR ON THIS SURFACE. THE P/N CAN BE OMITTED IF THERE IS NOT ENOUGH SPACE ON THIS SURFACE.
  - 5. PRODUCT SPECIFICATION GS-12-149.  
APPLICATION SPECIFICATION BUS-20-067.
  - 6. PACKAGED IN TRAYS.
- PCB NOTES:**
- 7. ALL HOLE DIAMETERS ARE FINISHED HOLE SIZE.
  - 8. MOUNTING HOLES, WHERE APPLICABLE, ARE UNPLATED.
  - ⑨  $\varnothing 1.151 \pm 0.025$  DRILLED HOLES PLATED WITH 0.008 MIN SnPb OR Sn OVER .001 [0.03] TO 0.08 Cu PLATING TO ACHIEVE  $\varnothing 1.02 \pm .07$  HOLE.
  - ⑩ "DIM XXX" TO BE DETERMINED BY THE CUSTOMER.
  - ⑪ CONNECTOR KEEP-OUT ZONE.

mat'l code				tolerances unless otherwise specified		CUSTOMER		FCI	
ltr	ecm no.	dr	date			COPY	projection	title	www.fciconnect.com
A				linear	0.X ± 0.5			4P + 12S + 4P	
					0.XX ± 0.25			VERTICAL SOLDER HEADER	
				angles	0.XXX ± 0.1				
					0° ± 2°				
				dr	Warren Du	10/19/09		product family	PwrBlade
				enrg	Warren Du	10/19/09		size	code
				chr	PM ZHENG	10/19/09		dwg no	213
				oppd	JOSEPH HSIA	10/19/09		51952-158	sheet
sheet index	revision sheet						scale	A	4 of 4
							1:1		

Pro/E

cage code 22526