

Excellent Integrated System Limited

Stocking Distributor

Click to view price, real time Inventory, Delivery & Lifecycle Information:

[FCI](#)

[51952-164LF](#)

For any questions, you can email us directly:

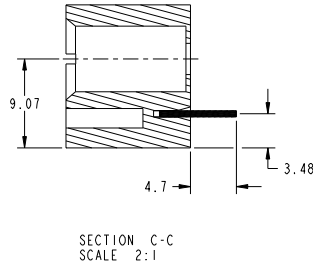
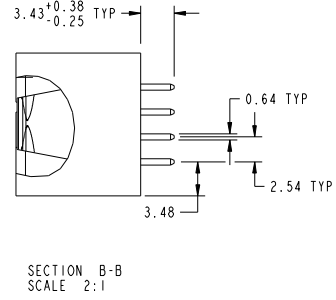
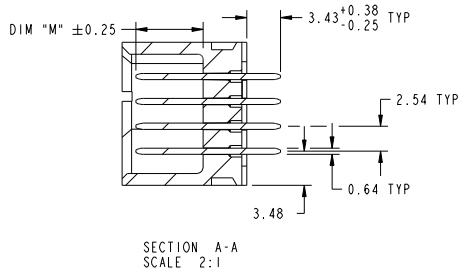
sales@integrated-circuit.com

Tous droits strictement réservés. Reproduction ou communication à des tiers interdite sous quelque forme que ce soit sans autorisation écrite du propriétaire. Propriété de FCI. Droits de reproduction FCI.

All rights strictly reserved. Reproduction or issue to third parties in any form whatever is not permitted without written authority from the proprietor. Property of FCI. Copyright FCI.



PRODUCT NUMBER
51952-164...
NOTE 3



mat'l code				tolerances unless otherwise specified		CUSTOMER		FCI	
ltr	ecm no.	dr	date	linear	0.X ±0.5	COPY	www.fciconnect.com		
A					0.XX ±0.25	projection	3ACP + 64S		
				angles	0.XXX ±0.1		VERTICAL SOLDER HEADER		
				dr	0° ±2°	MM	product family	PwrBlade	code
				enr	Warren Du 01/08/10	scale	size	dwg no	213
				chr	PM ZHENG 01/08/10	1:1	A	51952-164	sheet
				oppd	JOSEPH HSIA 01/08/10				2 of 4
sheet index	revision sheet								

Pro/E

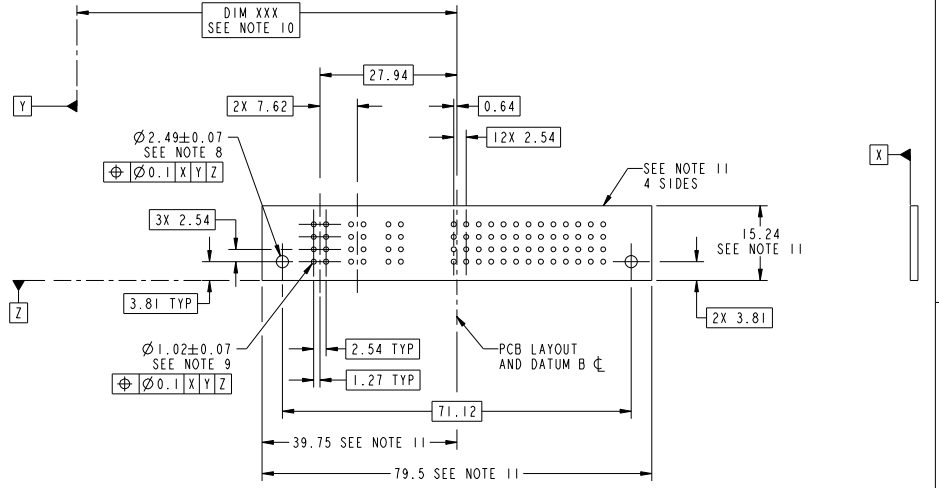
cage code 22526

Tous droits strictement réservés. Reproduction ou communication à des tiers interdite sous quelque forme que ce soit sans autorisation écrite du propriétaire. Propriété de FCI. Droits de reproduction FCI.



All rights strictly reserved. Reproduction or issue to third parties in any form whatever is not permitted without written authority from the proprietor. Property of FCI. Copyright FCI.

PRODUCT NUMBER
51952-164...
NOTE 3



RECOMMENDED PCB LAYOUT

mat'l code				tolerances unless otherwise specified		CUSTOMER	
ltr	ecm no.	dr	date	0.X ±0.5	linear	0.XX ±0.25	projection
A				0.XXX ±0.1	angles	0° ±2°	MM
				dr	Warren Du	01/08/10	scale
				enr	Warren Du	01/08/10	1:1
				chr	PM ZHENG	01/08/10	
				oppd	JOSEPH HSIA	01/08/10	
sheet index	revision sheet						

FCI		www.fciconnect.com	
COPY		title	
3ACP + 64S		VERTICAL SOLDER HEADER	
product family		PwrBlade	
size	dwg no	code	
A	51952-164	213	
		sheet	
		3 of 4	
cage code		22526	

Tous droits strictement réservés. Reproduction ou communication à des tiers interdite sous quelque forme que ce soit sans autorisation écrite du propriétaire. Propriété de FCI. Droits de reproduction FCI.

All rights strictly reserved. Reproduction or issue to third parties in any form whatever is not permitted without written authority from the proprietor. Property of FCI. Copyright FCI.

PRODUCT NUMBER

51952-164...
NOTE 3

NOTES:

1. DIMENSIONS AND TOLERANCES ARE IN ACCORDANCE WITH ASME Y14.5M, 1994 UNLESS OTHERWISE SPECIFIED.

CONNECTOR NOTES:

- ② HOUSING MATERIAL: UL 94 V-0 GLASS FILLED HIGH-TEMP THERMOPLASTIC
POWER CONTACT MATERIAL: COPPER ALLOY
SIGNAL PIN MATERIAL: COPPER ALLOY
 - 3. SEE ITEM 1 & 2 IN PRINT I0064183 FOR PLATING SPEC OF 51952-164 AND 51952-164LF RESPECTIVELY.
 - ④ MANUFACTURER'S NAME, DATE CODE AND OPTIONAL P/N TO APPEAR ON THIS SURFACE. THE P/N CAN BE OMITTED IF THERE IS NOT ENOUGH SPACE ON THIS SURFACE.
 - 5. PRODUCT SPECIFICATION GS-12-149.
APPLICATION SPECIFICATION BUS-20-067.
 - 6. PACKAGED IN TRAYS.
- PCB NOTES:**
- 7. ALL HOLE DIAMETERS ARE FINISHED HOLE SIZE.
 - 8. MOUNTING HOLES, WHERE APPLICABLE, ARE UNPLATED.
 - ⑨ $\varnothing 1.151 \pm 0.025$ DRILLED HOLES PLATED WITH 0.008 MIN SnPb OR Sn OVER .001 [0.03] TO 0.08 Cu PLATING TO ACHIEVE $\varnothing 1.02 \pm .07$ HOLE.
 - ⑩ "DIM XXX" TO BE DETERMINED BY THE CUSTOMER.
 - ⑪ CONNECTOR KEEP-OUT ZONE.

mat'l code				tolerances unless otherwise specified		CUSTOMER		FCI	
ltr	ecm no.	dr	date			COPY		www.fciconnect.com	
A				linear	0.X ± 0.5	projection		title	
					0.XX ± 0.25			3ACP + 64S	
				angles	0.XXX ± 0.1			VERTICAL SOLDER HEADER	
				dr	0° ± 2°	scale		product family	PwrBlade
				enr	Warren Du 01/08/10	1:1		size	code
				chr	Warren Du 01/08/10			dwg no	213
				oppd	PM ZHENG 01/08/10			51952-164	sheet
					JOSEPH HSIA 01/08/10				4 of 4
sheet index	revision sheet							cage code	22526