

Excellent Integrated System Limited

Stocking Distributor

Click to view price, real time Inventory, Delivery & Lifecycle Information:

[FCI](#)

[51952-175LF](#)

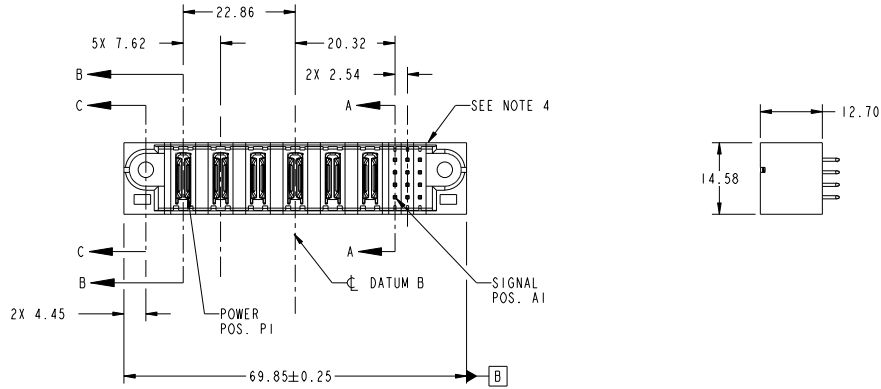
For any questions, you can email us directly:

sales@integrated-circuit.com

Tous droits strictement réservés. Reproduction ou communication à des tiers interdite sous quelque forme que ce soit sans autorisation écrite du propriétaire. Propriété de FCI. Droits de reproduction FCI.

All rights strictly reserved. Reproduction or issue to third parties in any form whatever is not permitted without written authority from the proprietor. Property of FCI. Copyright FCI.

PRODUCT NO.	ROWS	POWER						SIGNAL				
		E1	P1	P2	P3	P4	P5	P6	1	2	3	E2
51952-175-- NOTE ③	D C B A		PA	PA	PA	PA	PA	PA				



CODE	DIM "M" MATING LENGTH	CONTACT TYPE
PA	[N/A]	POWER
E	[6.86]	SIGNAL

mat'l code				tolerances unless otherwise specified				CUSTOMER		FCI		
ltr	ecm no.	dr	date	linear	0.X ±0.5	COPY		www.fciconnect.com		title		
A	DG10-0252	AL	07/07/10	linear	0.XX ±0.25	projection	6ACP + 12S		VERTICAL STB HEADER		code	
				angles	0.XXX ±0.1		product family		PwrBlade		213	
				dr	0° ±2°	MM	size		dwg no		sheet	
				engr	Asson Liu 07/07/10	scale	A		51952-175		1 of 4	
				chr	Jerome Chen 07/07/10							
				oppd	PM ZHENG 07/07/10							
					JOSEPH HSIA 07/07/10							
sheet index	revision sheet	A	A	A	A							
		1	2	3	4							

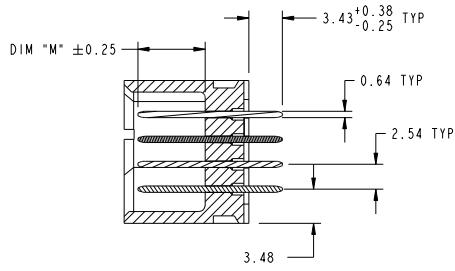
cage code 22526

Tous droits strictement réservés. Reproduction ou communication à des tiers interdite sous quelque forme que ce soit sans autorisation écrite du propriétaire. Propriété de FCI. Droits de reproduction FCI.

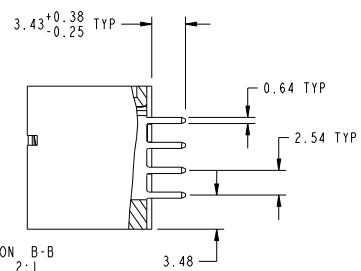
All rights strictly reserved. Reproduction or issue to third parties in any form whatever is not permitted without written authority from the proprietor. Property of FCI. Copyright FCI.



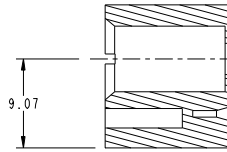
PRODUCT NUMBER
51952-175...
NOTE 3



SECTION A-A
SCALE 2:1



SECTION B-B
SCALE 2:1



SECTION C-C
SCALE 2:1

mat'l code				tolerances unless otherwise specified		CUSTOMER		FCI	
ltr	ecm no.	dr	date	linear	0.X ±0.5	COPY	www.fciconnect.com		
A					0.XX ±0.25	projection		title	
				angles	0.XXX ±0.1			6ACP + 12S	
				dr	0° ±2°	MM		VERTICAL STB HEADER	
				enr	Asson Liu 07/07/10	scale		product family	PwrBlade
				chr	Jerome Chen 07/07/10	1:1		size	code
				oppd	PM ZHENG 07/07/10			dwg no	213
					JOSEPH HSIA 07/07/10			51952-175	sheet
sheet index	revision sheet								2 of 4

Pro/E

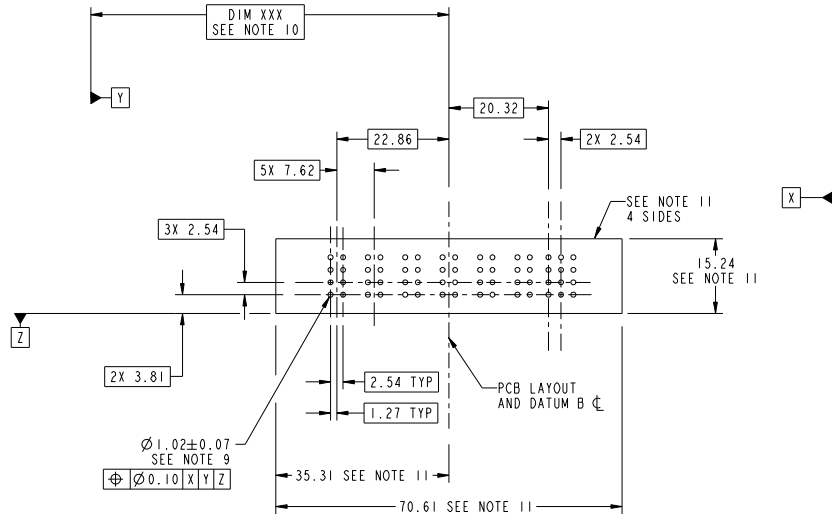
cage code 22526

Tous droits strictement réservés. Reproduction ou communication à des tiers interdite sous quelque forme que ce soit sans autorisation écrite du propriétaire. Propriété de FCI. Droits de reproduction FCI.

All rights strictly reserved. Reproduction or issue to third parties in any form whatever is not permitted without written authority from the proprietor. Property of FCI. Copyright FCI.



PRODUCT NUMBER
51952-175...
NOTE 3



RECOMMENDED PCB LAYOUT

mat'l code				tolerances unless otherwise specified		CUSTOMER		FCI	
lfr	ecm no.	dr	date	0.X	±0.5	COPY		www.fciconnect.com	
A				0.XX	±0.25	projection	title		
				0.XXX	±0.1		6ACP + 12S VERTICAL STB HEADER		
				angles	0° ± 2°		product family	PwrBlade	code
				dr	Asson Liu 07/07/10	scale	size	dwg no	213
				engr	Jerome Chen 07/07/10	1:1	A	51952-175	sheet
				chr	PM ZHENG 07/07/10				3 of 4
				oppd	JOSEPH HSIA 07/07/10				
sheet index	revision sheet								

Pro/E

cage code 22526

Tous droits strictement réservés. Reproduction ou communication à des tiers interdite sous quelque forme que ce soit sans autorisation écrite du propriétaire. Propriété de FCI. Droits de reproduction FCI.

All rights strictly reserved. Reproduction or issue to third parties in any form whatever is not permitted without written authority from the proprietor. Property of FCI. Copyright FCI.

PRODUCT NUMBER
51952-175-
NOTE 3

NOTES:

1. DIMENSIONS AND TOLERANCES ARE IN ACCORDANCE WITH ASME Y14.5M, 1994 UNLESS OTHERWISE SPECIFIED.

CONNECTOR NOTES:

- 2 HOUSING MATERIAL: UL 94 V-0 GLASS FILLED HIGH-TEMP THERMOPLASTIC
POWER CONTACT MATERIAL: COPPER ALLOY
SIGNAL PIN MATERIAL: COPPER ALLOY
 - 3. SEE ITEM 1 & 2 IN PRINT 10064183 FOR PLATING SPEC OF 51952-175 AND 51952-175LF RESPECTIVELY.
 - 4 MANUFACTURER'S NAME, DATE CODE AND OPTIONAL P/N TO APPEAR ON THIS SURFACE. THE P/N CAN BE OMITTED IF THERE IS NOT ENOUGH SPACE ON THIS SURFACE.
 - 5. PRODUCT SPECIFICATION GS-12-149.
APPLICATION SPECIFICATION BUS-20-067.
 - 6. PACKAGED IN TRAYS.
- PCB NOTES:
- 7. ALL HOLE DIAMETERS ARE FINISHED HOLE SIZE.
 - 8. MOUNTING HOLES, WHERE APPLICABLE, ARE UNPLATED.
 - 9 $\varnothing 1.151 \pm 0.025$ DRILLED HOLES PLATED WITH 0.008 MIN SnPb OR Sn OVER .001 [0.03] TO 0.08 Cu PLATING TO ACHIEVE $\varnothing 1.02 \pm 0.07$ HOLE.
 - 10 "DIM XXX" TO BE DETERMINED BY THE CUSTOMER.
 - 11 CONNECTOR KEEP-OUT ZONE.

mat'l code				tolerances unless otherwise specified		CUSTOMER		FCI	
ltr	ecm no.	dr	date	linear	0.X ± 0.5	COPY		www.fciconnect.com	
A					0.XX ± 0.25	projection	title		
					0.XXX ± 0.1		6ACP + 12S VERTICAL STB HEADER		
				angles	0° ± 2°		product family	PwrBlade	code
				dr	Arson Liu 07/07/10	scale	size	dwg no	213
				engr	Jerome Chen 07/07/10	1:1	A	51952-175	sheet
				chr	PM ZHENG 07/07/10				4 of 4
				oppd	JOSEPH HSIA 07/07/10				
sheet index	revision sheet								

Pro/E

cage code 22526