

## Excellent Integrated System Limited

Stocking Distributor

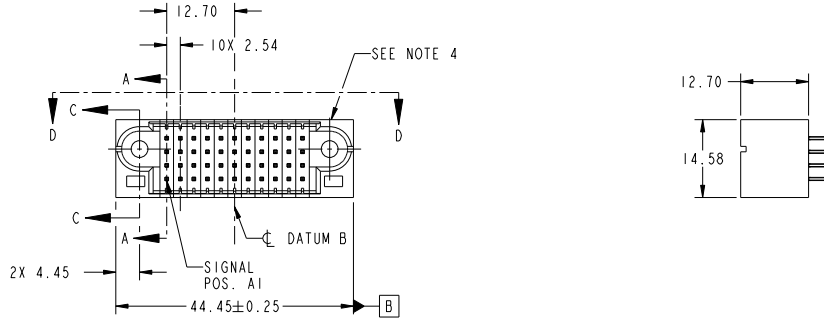
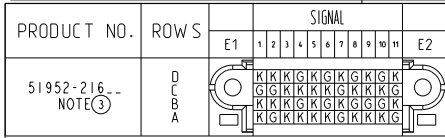
Click to view price, real time Inventory, Delivery & Lifecycle Information:

[FCI](#)

[51952-216LF](#)

For any questions, you can email us directly:

[sales@integrated-circuit.com](mailto:sales@integrated-circuit.com)



CODE	DIM "M" MATING LENGTH	CONTACT TYPE
K	[5.59]	SIGNAL
G	[6.86]	SIGNAL

spec ref	See Notes		dr	Weller Luo	2012-06-07	projection	MM	size	A4		scale	1:1
tolerance std	TOLERANCES UNLESS OTHERWISE SPECIFIED		eng	XQ Wang	2012-06-07			ecn no	*		rel level	Released
See Notes			chr	PM ZHENG	2012-06-07		product family		PwrBlade			rev
surface	<input checked="" type="checkbox"/> linear <input type="checkbox"/> angular	0.X ±0.50 0.XX ±0.25 0.XXX ±0.10 0° ±2°			title 44S VERTICAL PRESS-FIT HEADER	www.fci.com	cat. no. -	Product - Customer Drw	dwg no 51952-216	sheet 1 of 4		

PHASE FILE - REV C - 2009-06-09

1

2

3

PDS: Rev :A

STATUS:Released

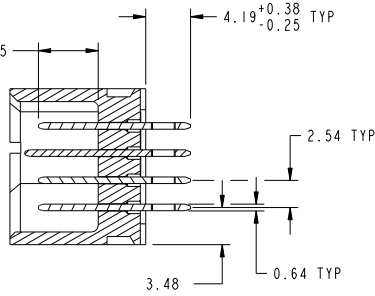
Printed: Jun 15, 2012



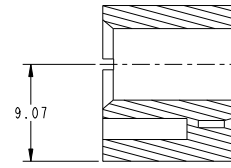
Copyright FCI.

PRODUCT NUMBER  
51952-216--  
NOTE 3

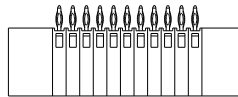
DIM "M" ±0.25



SECTION A-A  
SCALE 2:1



SECTION C-C  
SCALE 2:1



SECTION D-D

dr	Weller Luo	2012-06-07	projection	MM	size	A4	scale	1:1
eng	XQ Wang	2012-06-07			ecn no	*		
chr	PM ZHENG	2012-06-07	product family	PwrBlade	rel level	Released		
appr	PM ZHENG	2012-06-07			dwg no	51952-216	rev	A
www.fci.com		cat. no.	-	Product - Customer Drw	sheet 2 of 4			

PHASE FILE : REV C - 2009-06-09

PDS: Rev :A

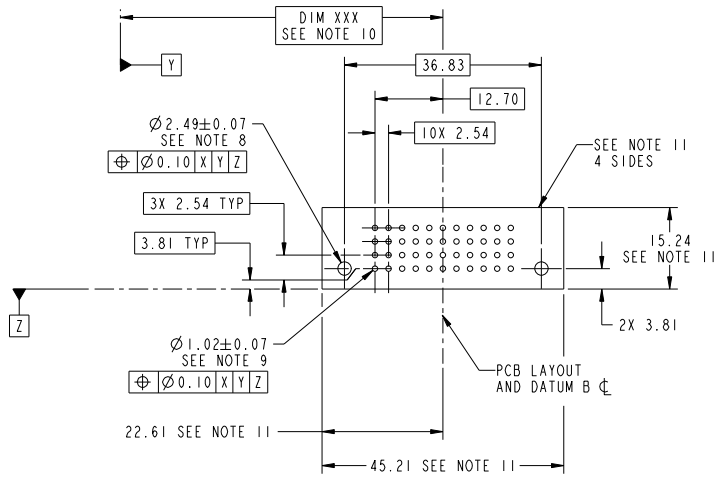
STATUS:Released

Printed: Jun 15, 2012



Copyright FCI.

PRODUCT NUMBER  
51952-216--  
NOTE 3



RECOMMENDED PCB LAYOUT

dr	Weller Luo	2012-06-07	projection	MM	size	scale
eng	XQ Wang	2012-06-07			A4	1:1
chr	PM ZHENG	2012-06-07	product family		ecn no	*
appr	PM ZHENG	2012-06-07	PwrBlade		rel level	Released
			title		dwg no	rev
www.fci.com			44S		51952-216	A
cat. no.			-		Product - Customer Drw	

PHASE FILE - REV C - 2009-06-09

PRODUCT NUMBER  
51952-216--  
NOTE 3

NOTES:

1. DIMENSIONS AND TOLERANCES ARE IN ACCORDANCE WITH ASME Y14.5M, 1994 UNLESS OTHERWISE SPECIFIED.

CONNECTOR NOTES:

- ② HOUSING MATERIAL: UL 94 V-0 GLASS FILLED HIGH-TEMP THERMOPLASTIC  
POWER CONTACT MATERIAL: COPPER ALLOY  
SIGNAL PIN MATERIAL: COPPER ALLOY
  - 3. SEE ITEM 3 & 4 IN PRINT 10064183 FOR PLATING SPEC OF 51952-216 AND 51952-216LF RESPECTIVELY.
  - ④ MANUFACTURER'S NAME, DATE CODE AND OPTIONAL P/N TO APPEAR ON THIS SURFACE. THE P/N CAN BE OMITTED IF THERE IS NOT ENOUGH SPACE ON THIS SURFACE.
  - 5. PRODUCT SPECIFICATION GS-12-149.  
APPLICATION SPECIFICATION BUS-20-067.
  - 6. PACKAGED IN TRAYS.
- PCB NOTES:
- 7. ALL HOLE DIAMETERS ARE FINISHED HOLE SIZE.
  - 8. MOUNTING HOLES, WHERE APPLICABLE, ARE UNPLATED.
  - ⑨  $\varnothing 1.151 \pm 0.025$  DRILLED HOLES PLATED WITH  
0.008 MIN SnPb OR Sn OVER .001 [0.03]  
TO 0.08 Cu PLATING TO ACHIEVE  
 $\varnothing 1.02 \pm 0.07$  HOLE.
  - ⑩ "DIM XXX" TO BE DETERMINED BY THE CUSTOMER.
  - ⑪ CONNECTOR KEEP-OUT ZONE.
12. FOR PRESS FIT APPLICATION USE FCI CAM TOOL 430169-XXX.

dr	Weller Luo	2012-06-07	projection		MM	size	A4	scale	1:1	
eng	XQ Wang	2012-06-07	chr			PM ZHENG	2012-06-07	ecn no	*	
appr	PM ZHENG	2012-06-07	product family	PwrBlade		rel level	Released			
		title	44S VERTICAL PRESS-FIT HEADER			dwg no	51952-216		rev	A
www.fci.com		cat. no.	-		Product - Customer Drw		sheet 4 of 4			

PLATE FILE - REV C - 2009-06-09



Copyright FCI.