

Excellent Integrated System Limited

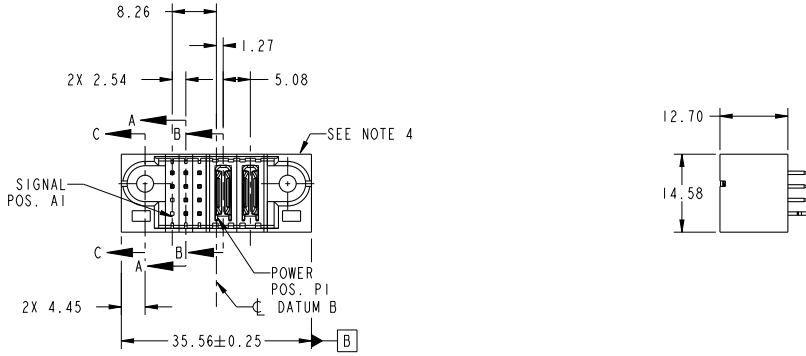
Stocking Distributor

Click to view price, real time Inventory, Delivery & Lifecycle Information:

[FCI](#)
[51952-224LF](#)

For any questions, you can email us directly:
sales@integrated-circuit.com

PRODUCT NO.	ROWS	SIGNAL		POWER	
		E1	E2	P1	P2
51952-224-- NOTE(3)	D C B A				



CODE	DIM "M" MATING LENGTH	CONTACT TYPE
PA	[N/A]	POWER
H	[5.59]	SIGNAL
E	[6.86]	SIGNAL
HA	[N/A]	HOLD-DOWN
X	OMITTED	OMITTED

spec ref	See Notes		dr	Luo Weller	2012/08/02	projection		size	A4	scale	1:1	
tolerance std	TOLERANCES UNLESS OTHERWISE SPECIFIED		eng	Luo Weller	2012/08/08	product family	PwrBlade	ecr no	-	rel level	Released	
See Notes			chr	-	-			rel level	Released			
surface	linear	0.X ±0.50	12S + 2DCP VERTICAL SOLDER HEADER www.fci.com				cat. no.	&model_name	Product - Customer Drw	sheet 1 of 4	rev	A
		0.XX ±0.25										
		0.XXX ±0.10										
	angular	0° ±2°					51952-224					

Prod File - REV C - 2009-08-08

1

2

3

PDS: Rev :A

STATUS:Released

Printed: Aug 08, 2012

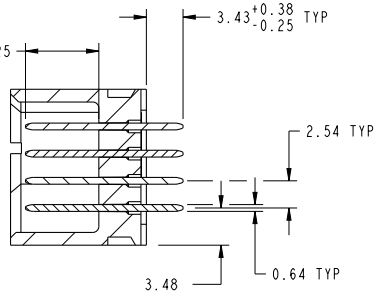


Copyright FCI.

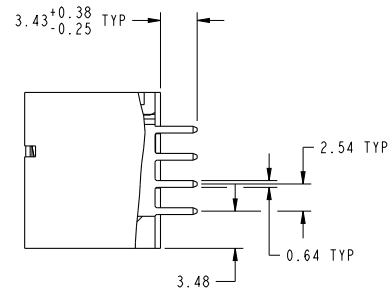
PRODUCT NUMBER

51952-224--
NOTE 3

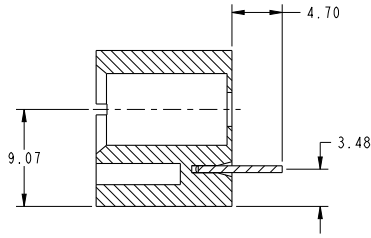
DIM "M" ±0.25



SECTION A-A
SCALE 2:1



SECTION B-B
SCALE 2:1



SECTION C-C
SCALE 2:1

dr	Luo Weller	2012/08/02	projection	MM	size	A4	scale	1:1	
eng	Luo Weller	2012/08/08			ecn no	-			
chr	-	-			product family	PwrBlade	rel level	Released	
appr	Pei-Ming Zheng	2012/08/08				title	12S + 2DCP	dwg no	51952-224
www.fci.com						rev	A		
cat. no.	&model_name	Product - Customer Drw			sheet 2 of 4				

Print File : REV C - 2009-08-08

PDS: Rev :A

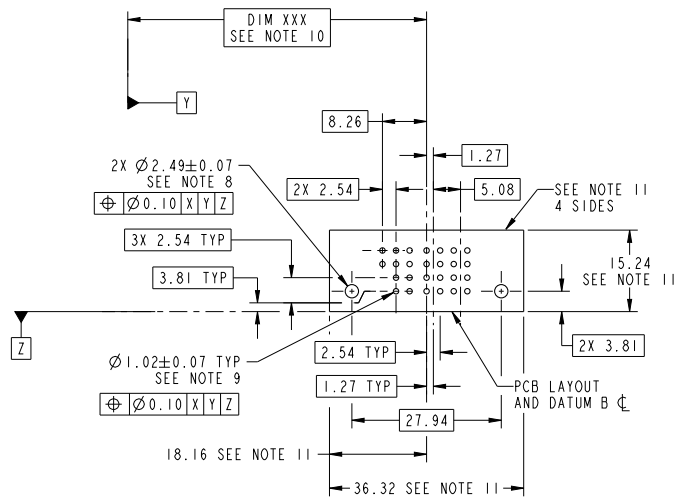
STATUS:Released

Printed: Aug 08, 2012



Copyright FCI.

PRODUCT NUMBER
51952-224--
NOTE 3



RECOMMENDED PCB LAYOUT

dr	Luo Weller	2012/08/02	projection	MM	size	A4	scale	1:1	
eng	Luo Weller	2012/08/08			ecn no	-			
chr	-	-			product family	PwrBlade	rel level	Released	
appr	Pei-Ming Zheng	2012/08/08				12S + 2DCP	dwg no	51952-224	
			VERTICAL SOLDER HEADER					rev	A
www.fci.com		cat. no.	&model_name	Product - Customer Drw			sheet 3 of 4		

Print File - REV C - 2009-08-08

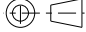

PRODUCT NUMBER
51952-224...
NOTE 3

NOTES:

1. DIMENSIONS AND TOLERANCES ARE IN ACCORDANCE WITH ASME Y14.5M, 1994 UNLESS OTHERWISE SPECIFIED.

CONNECTOR NOTES:

- ② HOUSING MATERIAL: UL 94 V-0 GLASS FILLED HIGH-TEMP THERMOPLASTIC
POWER CONTACT MATERIAL: COPPER ALLOY
SIGNAL PIN MATERIAL: COPPER ALLOY
 - 3. SEE ITEM 1 & 2 IN PRINT 10064183 FOR PLATING SPEC OF 51952-224 AND 51952-224LF RESPECTIVELY.
 - ④ MANUFACTURER'S NAME, DATE CODE AND OPTIONAL P/N TO APPEAR ON THIS SURFACE. THE MARK CAN BE OMITTED IF THERE IS NOT ENOUGH SPACE ON THIS SURFACE.
 - 5. PRODUCT SPECIFICATION GS-12-149.
APPLICATION SPECIFICATION BUS-20-067.
 - 6. PACKAGED IN TRAYS.
- PCB NOTES:
- 7. ALL HOLE DIAMETERS ARE FINISHED HOLE SIZE.
 - 8. MOUNTING HOLES, WHERE APPLICABLE, ARE UNPLATED.
 - ⑨ $\varnothing 1.151 \pm 0.025$ DRILLED HOLES PLATED WITH
0.008 MIN SnPb OR Sn OVER .001 [0.03]
TO 0.08 Cu PLATING TO ACHIEVE
 $\varnothing 1.02 \pm 0.07$ HOLE.
 - ⑩ "DIM XXX" TO BE DETERMINED BY THE CUSTOMER.
 - ⑪ CONNECTOR KEEP-OUT ZONE.

dr	Luo Weller	2012/08/02	projection		MM	size	A4	scale	1:1	
eng	Luo Weller	2012/08/08	chr			-	ecn no	-		
appr	Pei-Ming Zheng	2012/08/08	product family	PwrBlade		rel level	Released			
			title	12S + 2DCP VERTICAL SOLDER HEADER		dwg no	51952-224		rev	A
www.fci.com			cat. no.	&model_name	Product - Customer Drw		sheet 4 of 4			

Print File - REV C - 2009-08-08



Copyright FCI.