

## Excellent Integrated System Limited

Stocking Distributor

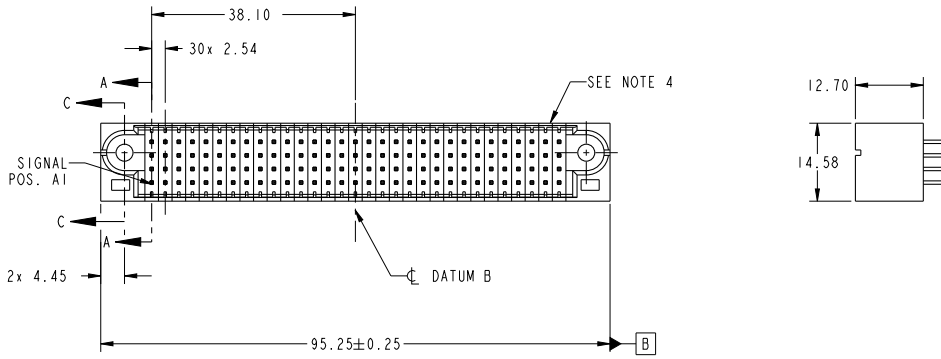
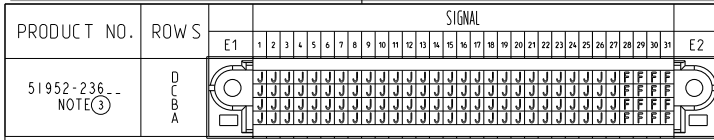
Click to view price, real time Inventory, Delivery & Lifecycle Information:

[FCI](#)

[51952-236LF](#)

For any questions, you can email us directly:

[sales@integrated-circuit.com](mailto:sales@integrated-circuit.com)



CODE	DIM "M" MATING LENGTH	CONTACT TYPE
J	[5.59]	SIGNAL
F	[6.86]	SIGNAL

spec ref	See Notes		dr	Sky Chen	2012/12/10	projection	MM	size	A4	scale	1:1
tolerance std	TOLERANCES UNLESS OTHERWISE SPECIFIED		eng	Sky Chen	2012/12/20			ecn no	-	rel level	Released
See Notes			chr	-	appr			Pei-Ming Zheng	2012/12/20	product family	PwrBlade
surface	linear	0.X ±0.50					124S VERTICAL STB HEADER	www.fci.com	cat. no.	Product - Customer Drw	sheet 1 of 4
		0.XX ±0.25									
		0.XXX ±0.10									
	angular	0° ±2°									

Print File - REV C - 2009-08-09

1

2

3

PDS: Rev :A

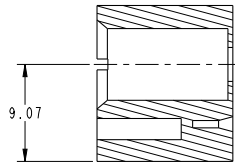
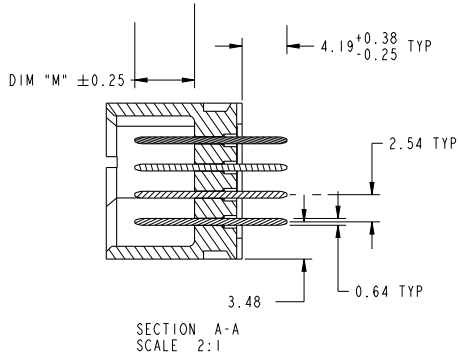
STATUS:Released

Printed: Dec 20, 2012



Copyright FCI.

PRODUCT NUMBER  
51952-236--  
NOTE 3



dr	Sky Chen	2012/12/10	projection	MM	size	A4	scale	1:1
eng	Sky Chen	2012/12/20			ecn no	-		
chr	-	-	product family	PwrBlade	rel level	<b>Released</b>		
appr	Pei-Ming Zheng	2012/12/20			title	124S		rev
					VERTICAL STB HEADER		dwg no	51952-236
www.fci.com			cat. no.	Product - Customer Drw			sheet 2 of 4	

Print File : REV C - 2009-06-09

PDS: Rev :A

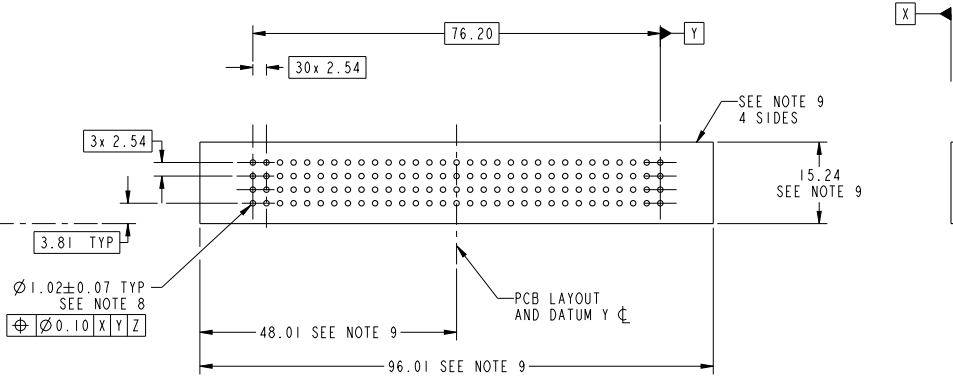
STATUS:Released

Printed: Dec 20, 2012



Copyright FCI.

PRODUCT NUMBER  
51952-236--  
NOTE 3



RECOMMENDED PCB LAYOUT

dr	Sky Chen	2012/12/10	projection	MM	size	A4	scale	1:1
eng	Sky Chen	2012/12/20			ecn no	-	rel level	Released
chr	-	-			product family	PwrBlade	rev	A
appr	Pei-Ming Zheng	2012/12/20			cat. no.	124S	Product - Customer Drw	sheet 3 of 4
					dwg no	51952-236		
			www.fci.com					

Print File - REV C - 2009-06-09

PDS: Rev :A

STATUS:Released

Printed: Dec 20, 2012

Copyright FCI.

PRODUCT NUMBER  
51952-236-  
NOTE 3

NOTES:

1. DIMENSIONS AND TOLERANCES ARE IN ACCORDANCE WITH ASME Y14.5M, 1994 UNLESS OTHERWISE SPECIFIED.

CONNECTOR NOTES:

- ② HOUSING MATERIAL: UL 94 V-0 GLASS FILLED HIGH-TEMP THERMOPLASTIC  
SIGNAL PIN MATERIAL: COPPER ALLOY
  - 3. SEE ITEM 1 & 2 IN PRINT 10064183 FOR PLATING SPEC OF 51952-236 AND 51952-236LF RESPECTIVELY.
  - ④ MANUFACTURER'S NAME, DATE CODE AND OPTIONAL P/N TO APPEAR ON THIS SURFACE. THE MARK CAN BE OMITTED IF THERE IS NOT ENOUGH SPACE ON THIS SURFACE.
  - 5. PRODUCT SPECIFICATION GS-12-149.  
APPLICATION SPECIFICATION BUS-20-067.
  - 6. PACKAGED IN TRAYS.
- PCB NOTES:
- 7. ALL HOLE DIAMETERS ARE FINISHED HOLE SIZE.
  - 8.  $\varnothing 1.151 \pm 0.025$  DRILLED HOLES PLATED WITH 0.008 MIN SnPb OR Sn OVER .001 [0.03] TO 0.08 Cu PLATING TO ACHIEVE  $\varnothing 1.02 \pm 0.07$  HOLE.
  - 9. CONNECTOR KEEP-OUT ZONE.



Copyright FCI.

dr	Sky Chen	2012/12/10	projection		MM	size	A4	scale	1:1		
eng	Sky Chen	2012/12/20				ecn no	-				
chr	-	-	product family	PwrBlade	rel level	<b>Released</b>					
appr	Pei-Ming Zheng	2012/12/20			title	124S		dwg no	51952-236	rev	A
www.fci.com			cat. no.	Product - Customer Drw				sheet 4 of 4			

Print File - REV C - 2009-06-09