

## Excellent Integrated System Limited

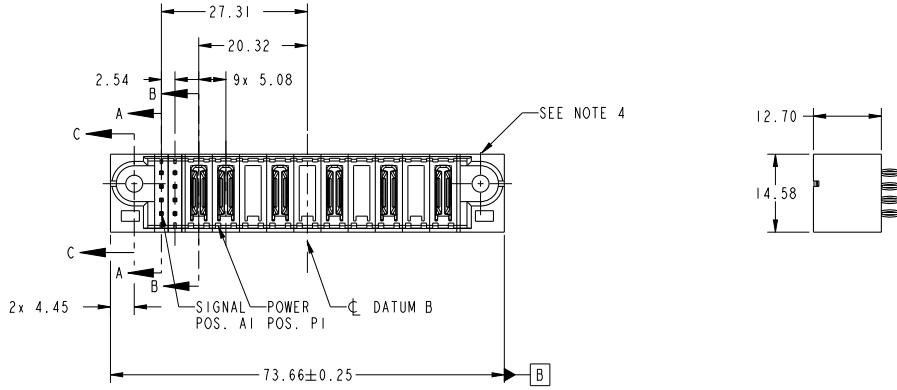
Stocking Distributor

Click to view price, real time Inventory, Delivery & Lifecycle Information:

[FCI](#)  
[51952-277LF](#)

For any questions, you can email us directly:  
[sales@integrated-circuit.com](mailto:sales@integrated-circuit.com)

PRODUCT NO.	ROWS	SIGNAL										POWER																				
		E1				P1	P2	P3	P4	P5	P6	P7	P8	P9	P10	E2																
51952-277-- NOTE ③	D C B A					PC	PC	X	PC	X	PC	X	PC	X	PC																	



CODE	DIM "M" MATING LENGTH	CONTACT TYPE
PC	[N/A]	POWER
G	[6.86]	SIGNAL
X		OMITTED

spec ref	See Notes		dr	Luo Weller	2014/03/25	projection		MM	size	A4	scale	1:1
tolerance std	TOLERANCES UNLESS OTHERWISE SPECIFIED		eng	Luo Weller	2014/05/23	product family	PwrBlade	ecn no	-	rel level	Released	rev
See Notes			chr	-	-							
surface	linear	0.X ±0.50	appr	Pei-Ming Zheng	2014/05/23	8S+10DCP		51952-277		A		
		0.XX ±0.25	www.fci.com		VERTICAL PF HEADER		cat. no.		&model_name		Product - Customer Drw	
	angular	0° ±2°									sheet 1 of 4	

Print File - REV C - 2009-08-09

1

2

3

PDS: Rev :A

STATUS:Released

Printed: May 23, 2014

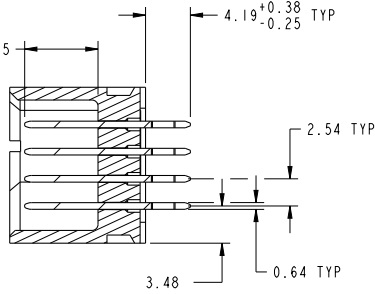


Copyright FCI.

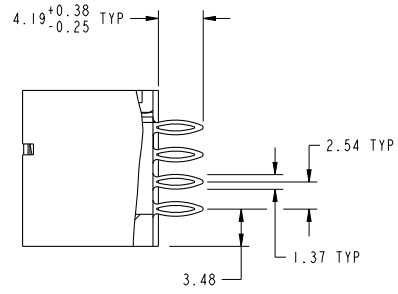
PRODUCT NUMBER

51952-277--  
NOTE 3

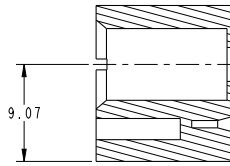
DIM "M" ±0.25



SECTION A-A  
SCALE 2:1



SECTION B-B  
SCALE 2:1



SECTION C-C  
SCALE 2:1

dr	Luo Weller	2014/03/25	projection	MM	size	A4	scale	1:1
eng	Luo Weller	2014/05/23			ecn no	-	rel level	
chr	-	-			product family	PwrBlade	Released	
appr	Pei-Ming Zheng	2014/05/23				dwg no	51952-277	rev
<b>www.fci.com</b>			title 8S+10DCP VERTICAL PF HEADER			sheet 2 of 4		
cat. no.		&model_name		Product - Customer Drw		sheet 2 of 4		

Print File : REV C - 2009-06-09

PDS: Rev :A

STATUS:Released

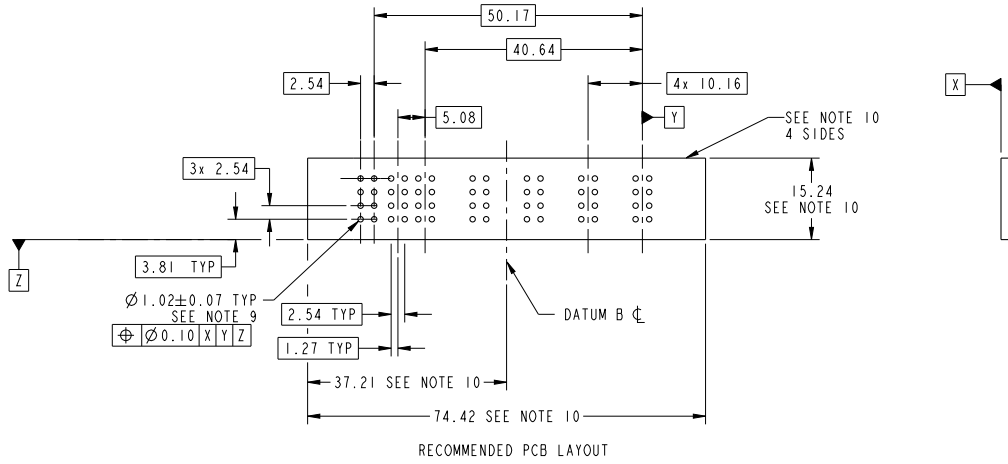
Printed: May 23, 2014



Copyright FCI.

PRODUCT NUMBER

51952-277\_\_  
NOTE 3



dr	Luo Weller	2014/03/25	projection	MM	size	A4	scale	1:1
eng	Luo Weller	2014/05/23			ecn no	-	rel level	
chr	-	-			product family	PwrBlade	Released	
appr	Pei-Ming Zheng	2014/05/23				part no	8S+10DCP	rev
www.fci.com						cat. no.	51952-277	A
						model name	VERTICAL PF HEADER	
			Product - Customer Drw			sheet 3 of 4		

Print File - REV C - 2009-06-09

PDS: Rev :A

STATUS:Released

Printed: May 23, 2014

PRODUCT NUMBER  
51952-277..  
NOTE 3

- NOTES:
- DIMENSIONS AND TOLERANCES ARE IN ACCORDANCE WITH ASME Y14.5M, 1994 UNLESS OTHERWISE SPECIFIED.
- CONNECTOR NOTES:
- HOUSING MATERIAL: UL 94 V-0 GLASS FILLED HIGH-TEMP THERMOPLASTIC  
POWER CONTACT MATERIAL: COPPER ALLOY  
SIGNAL PIN MATERIAL: COPPER ALLOY
  - SEE ITEM 3 & 4 IN PRINT 10064183 FOR PLATING SPEC OF 51952-277 AND 51952-277LF RESPECTIVELY.
  - MANUFACTURER'S NAME, DATE CODE AND OPTIONAL P/N TO APPEAR ON THIS SURFACE. THE MARK CAN BE OMITTED IF THERE IS NOT ENOUGH SPACE ON THIS SURFACE.
  - PRODUCT SPECIFICATION GS-12-149.  
APPLICATION SPECIFICATION BUS-20-067.
  - PACKAGED IN TRAYS.
- PCB NOTES:
- ALL HOLE DIAMETERS ARE FINISHED HOLE SIZE.
  - MOUNTING HOLES, WHERE APPLICABLE, ARE UNPLATED.
  - $\varnothing 1.151 \pm 0.025$  DRILLED HOLES PLATED WITH 0.008 MIN SnPb OR Sn OVER .001 [0.03] TO 0.08 Cu PLATING TO ACHIEVE  $\varnothing 1.02 \pm 0.07$  HOLE.
  - CONNECTOR KEEP-OUT ZONE.



Copyright FCI.

dr	Luo Weller	2014/03/25	projection		MM	size	A4	scale	1:1		
eng	Luo Weller	2014/05/23				ecn no	-				
chr	-	-	product family	PwrBlade	rel level	<b>Released</b>					
appr	Pei-Ming Zheng	2014/05/23			title	8S+10DCP		dwg no	51952-277	rev	A
www.fci.com		cat. no.	&model_name	Product - Customer Drw			sheet 4 of 4				

Print File - REV C - 2009-06-09