

## Excellent Integrated System Limited

Stocking Distributor

Click to view price, real time Inventory, Delivery & Lifecycle Information:

[FCI](#)

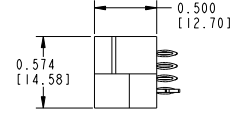
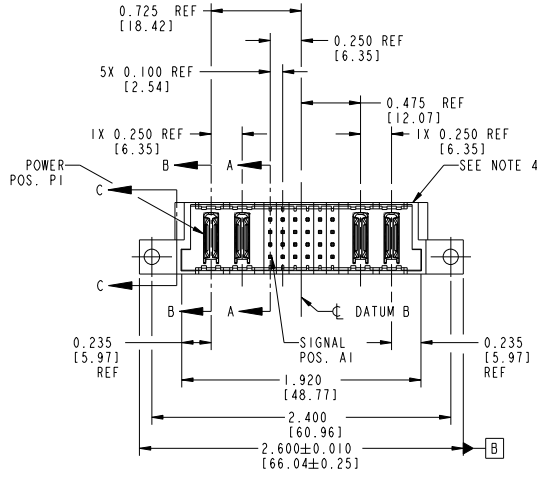
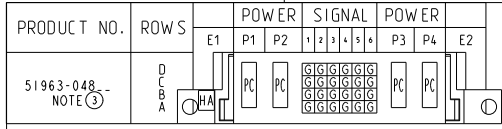
[51963-048LF](#)

For any questions, you can email us directly:

[sales@integrated-circuit.com](mailto:sales@integrated-circuit.com)

Tous droits strictement réservés. Reproduction ou communication, en des lieux interdite sans aucune forme que ce soit sans autorisation écrite du propriétaire. Propriété de FCI. Droits de reproduction FCI.

All rights strictly reserved. Reproduction or issue in any form wherever is not permitted without written authority from the proprietor. Property of FCI. Copyright FCI.



CODE	DIM "M" MATING LENGTH		CONTACT TYPE
PC	[N/A]	[N/A]	POWER
HA	[N/A]	[N/A]	HOLD-DOWN
G	0.270	[6.86]	SIGNAL

mat'l code		SEE NOTE 2	tolerances unless otherwise specified	CUSTOMER	www.fciconnect.com title 2P + 24S + 2P VERTICAL PRESS-FIT HEADER product family PwrBlade code 213 size dwg no 51963-048 sheet 1 of 4
ltr	ecm no.	dr	date	linear	
A	DG10-0036	WL ong	1/26/10	linear	WL ZHANG 1/26/10 eng PW ZHENG 1/26/10 chr Joseph Hsieh 1/26/10
sheet index	revision sheet	A 1	A 2	A 3	A 4

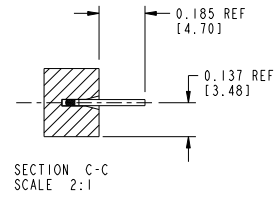
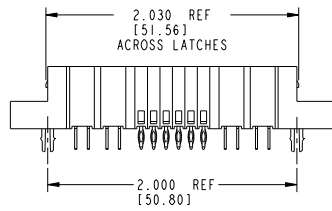
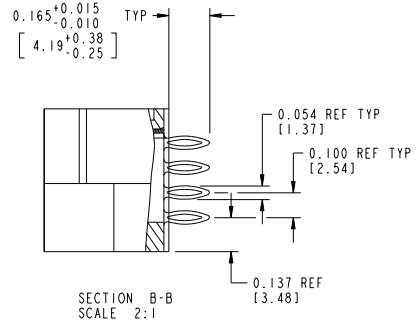
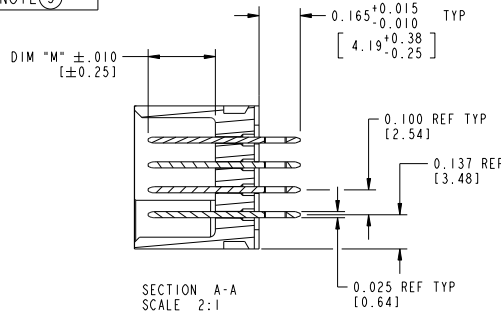


Tous droits strictement réservés. Reproduction ou communication, en des lieux interdites sans aucune forme que ce soit sans autorisation écrite du propriétaire. Propriété de FCI. Droits de reproduction FCI.



All rights strictly reserved. Reproduction or issue in any form wherever is not permitted without written authority from the proprietor. Property of FCI. Copyright FCI.

PRODUCT NUMBER  
51963-048  
NOTE ③



mat'l code		SEE NOTE 2	tolerances unless otherwise specified	CUSTOMER	www.fciconnect.com
ltr	ecn no.	dr	date	linear	
A				linear	INCH/MM scale 1:1
				angles	
				dr	
				enr	
				chr	
				appd	
sheet index	revision sheet				

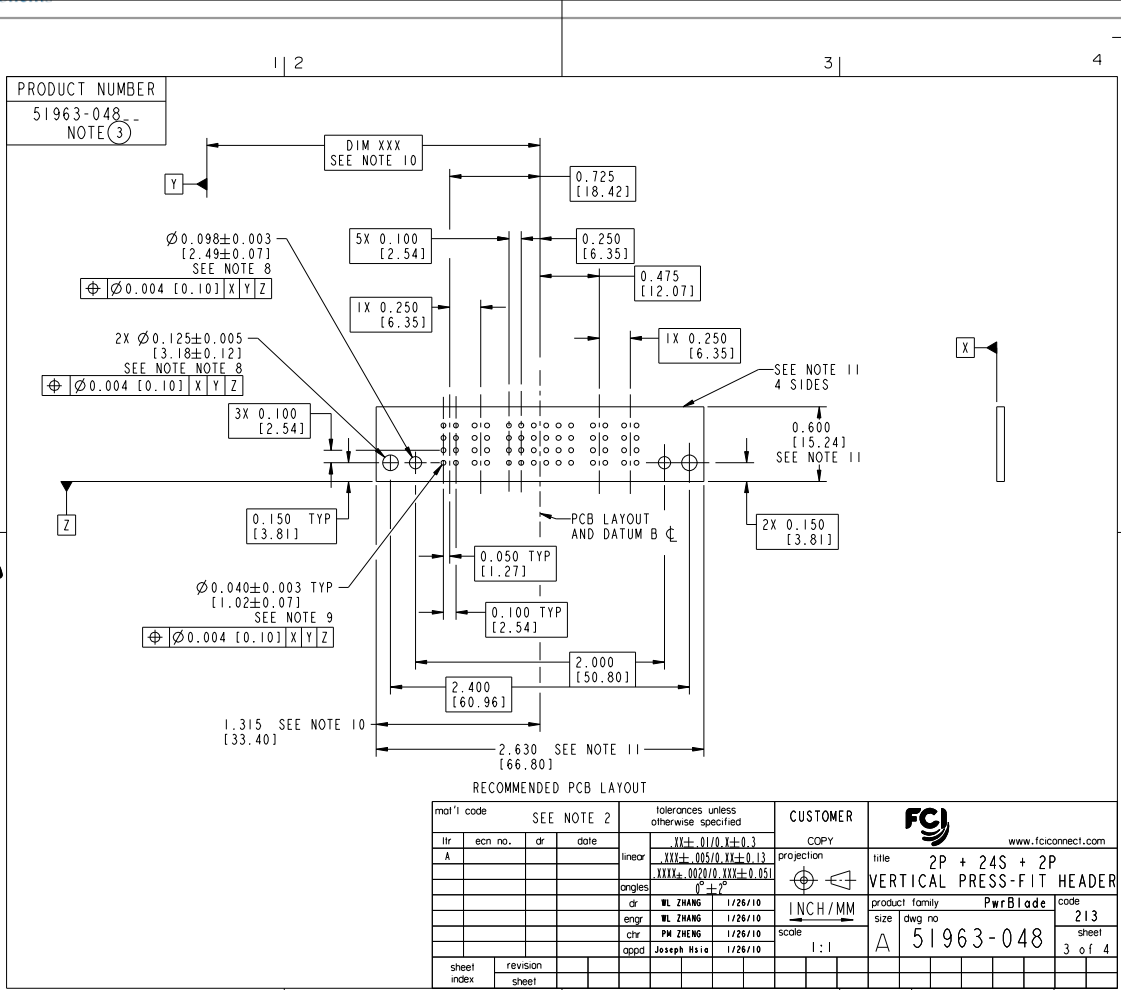
Pro/E

cage code 22526

Tous droits strictement réservés. Reproduction ou communication, o des liens inféridite sous quelque forme que ce soit sans autorisation écrite du propriétaire. Propriété de c FCI. Droits de reproduction FCI.



All rights strictly reserved. Reproduction or issue in any form whatever is not permitted without written authority from the proprietor. Property of FCI. Copyright FCI.



RECOMMENDED PCB LAYOUT

mat'l code		SEE NOTE 2	tolerances unless otherwise specified	CUSTOMER	www.fciconnect.com
ltr	ecm no.	dr	date	COPY	
A				linear	title
				angles	2P + 24S + 2P VERTICAL PRESS-FIT HEADER
				dr	product family
				enr	PwrBlade
				chr	size
				appd	dwg no
sheet index	revision sheet			Joseph Hsieh	51963-048
					code
					213
					sheet
					3 of 4
					code code
					22526

Pro/E

Tous droits strictement réservés. Reproduction ou communication, en des lieux interdites sans aucune forme que ce soit sans autorisation écrite du propriétaire. Property of FCI. Copyright FCI.

All rights strictly reserved. Reproduction or issue in any form wherever is not permitted without written authority from the proprietor. Property of FCI. Copyright FCI.

PRODUCT NUMBER  
51963-048--  
NOTE(3)

NOTES:

1. DIMENSIONS AND TOLERANCES ARE IN ACCORDANCE WITH ASME Y14.5M, 1994 UNLESS OTHERWISE SPECIFIED.
- CONNECTOR NOTES:
- ② HOUSING MATERIAL: UL 94 V-0 GLASS FILLED HIGH-TEMP THERMOPLASTIC  
POWER CONTACT MATERIAL: COPPER ALLOY  
SIGNAL PIN MATERIAL: COPPER ALLOY
3. PLATING:  
SEE ITEM 3 & 4 IN PRINT 10064183 FOR PLATING SPEC OF 51963-048;51963-048LF PRESPECTIVELY
- ④ MANUFACTURER'S NAME, DATE CODE AND OPTIONAL P/N TO APPEAR ON THIS SURFACE. THE P/N CAN BE OMITTED IF THERE IS NOT ENOUGH SPACE ON THIS SURFACE.
5. PRODUCT SPECIFICATION GS-12-149.  
APPLICATION SPECIFICATION BUS-20-067.
6. PACKAGED IN TRAYS.
- PCB NOTES:
7. ALL HOLE DIAMETERS ARE FINISHED HOLE SIZE.
8. MOUNTING HOLES, WHERE APPLICABLE, ARE UNPLATED.
- ⑨  $\varnothing 1.151 \pm 0.025$  DRILLED HOLES PLATED WITH 0.008 MIN SnPb OR Sn OVER .001 [0.03] TO 0.08 Cu PLATING TO ACHIEVE  $\varnothing 1.02 \pm 0.07$  HOLE.
- ⑩ "DIM XXX" TO BE DETERMINED BY THE CUSTOMER.
- ⑪ CONNECTOR KEEP-OUT ZONE.

mat'l code		SEE NOTE 2	tolerances unless otherwise specified	CUSTOMER	FCI www.fciconnect.com	
ltr	ecm no.	dr	date	linear	projection	title
A				$XX \pm .01/0$ $YY \pm 0.3$		2P + 24S + 2P
				$XXX \pm .005/0$ $YY \pm 0.13$		VERTICAL PRESS-FIT HEADER
				angles	$0^\circ \pm 0^\circ$	product family PwrBlade code 213
				dr	WL ZHANG 1/26/10	size
				enr	WL ZHANG 1/26/10	dwg no
				chr	FM ZHENG 1/26/10	51963-048
				oppd	Joseph Hsiao 1/26/10	4 of 4
sheet index	revision sheet				scale 1:1	

cage code 22526