

## Excellent Integrated System Limited

Stocking Distributor

Click to view price, real time Inventory, Delivery & Lifecycle Information:

[FCI](#)

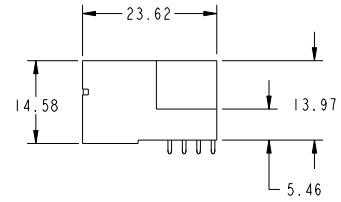
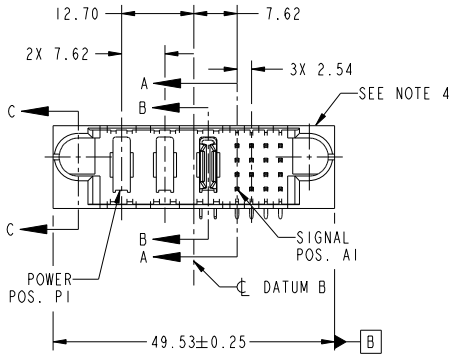
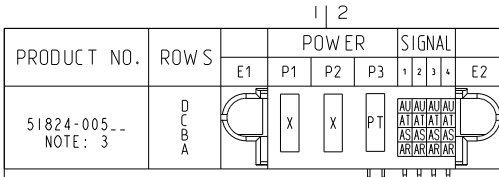
[51824-005LF](#)

For any questions, you can email us directly:

[sales@integrated-circuit.com](mailto:sales@integrated-circuit.com)

Tous droits strictement réservés. Reproduction ou communication à des tiers interdite sous quelque forme que ce soit sans autorisation écrite du propriétaire. Propriété de FCI. Droits de reproduction FCI.

All rights strictly reserved. Reproduction or issue to third parties in any form whatever is not permitted without written authority from the proprietor. Property of FCI. Copyright FCI.



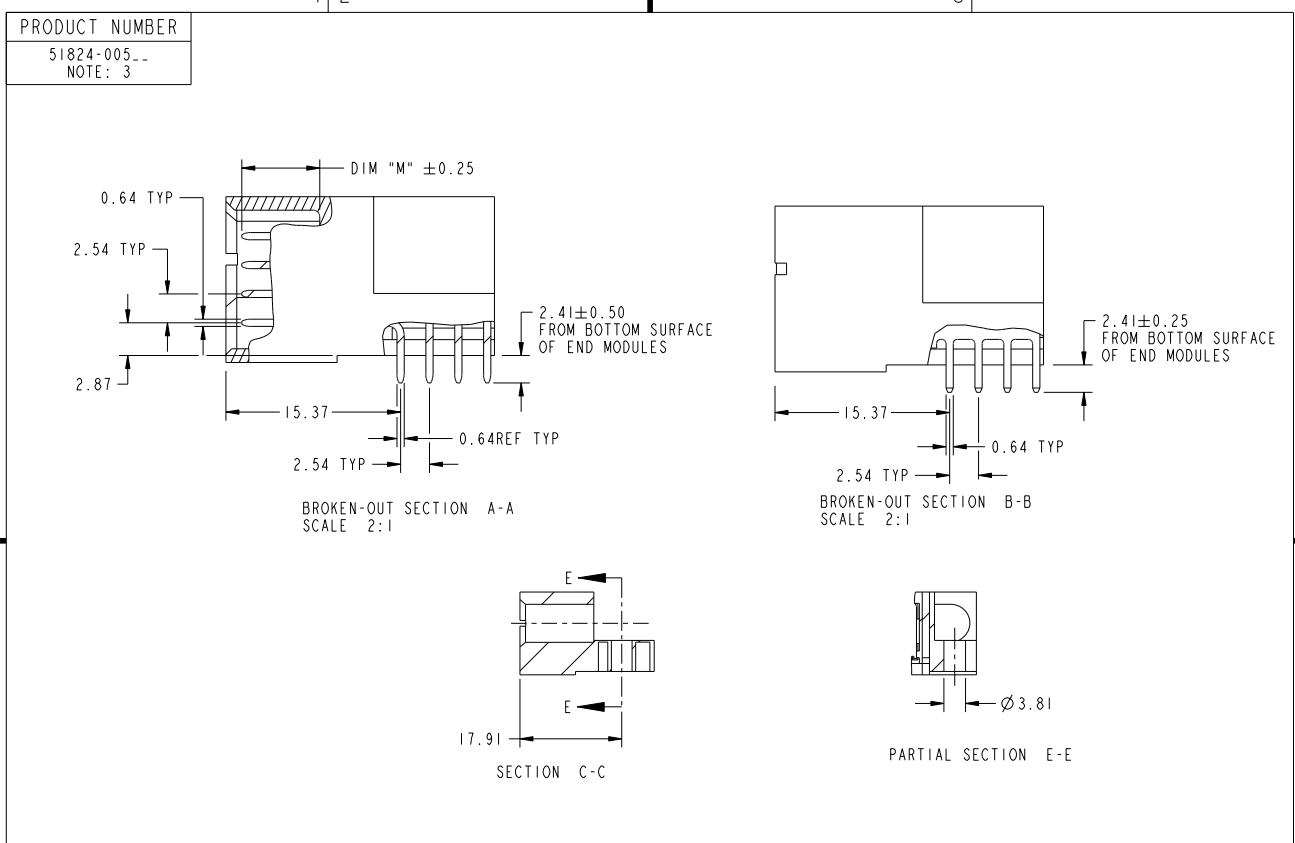
CODE	DIM "M" MATING LENGTH	CONTACT TYPE
AU	[6.86]	SIGNAL
AT	[6.86]	SIGNAL
AS	[6.86]	SIGNAL
AR	[6.86]	SIGNAL
PT	[N/A]	POWER
X	OMITTED	

SEE NOTE				tolerances unless otherwise specified		CUSTOMER	
ltr	ecn no.	dr	date	linear	0.X ±0.5	www.fciconnect.com	
A	DG08-0217	W D	08/18/08	angles	0.XX ±0.25	title 3P + 16S	
					0.XXX ±0.10	RIGHT ANGLE SOLDER HEADER	
				dr	0° ±2°	product family PwrBlade	
				enr		code 213	
				chr	Warren Du 07/07/08	sheet 1 of 4	
				appd	JEROME CHEN 07/07/08		
					GARY HSIEH 07/07/08		
					JOSEPH HSIA 07/07/08		
sheet index	revision sheet	A 1	A 2	A 3	A 4		

CUSTOMER		FCI	
COPY		www.fciconnect.com	
projection	MM	title 3P + 16S	
scale	1:1	RIGHT ANGLE SOLDER HEADER	
		product family	PwrBlade
		size	51824-005
		code	213
		sheet	1 of 4

Tous droits strictement réservés. Reproduction ou communication à des tiers interdite sous quelque forme que ce soit sans autorisation écrite du propriétaire. Propriété de FCI. Droits de reproduction FCI.

All rights strictly reserved. Reproduction or issue to third parties in any form whatsoever is not permitted without written authority from the proprietor. Property of FCI. Copyright FCI.



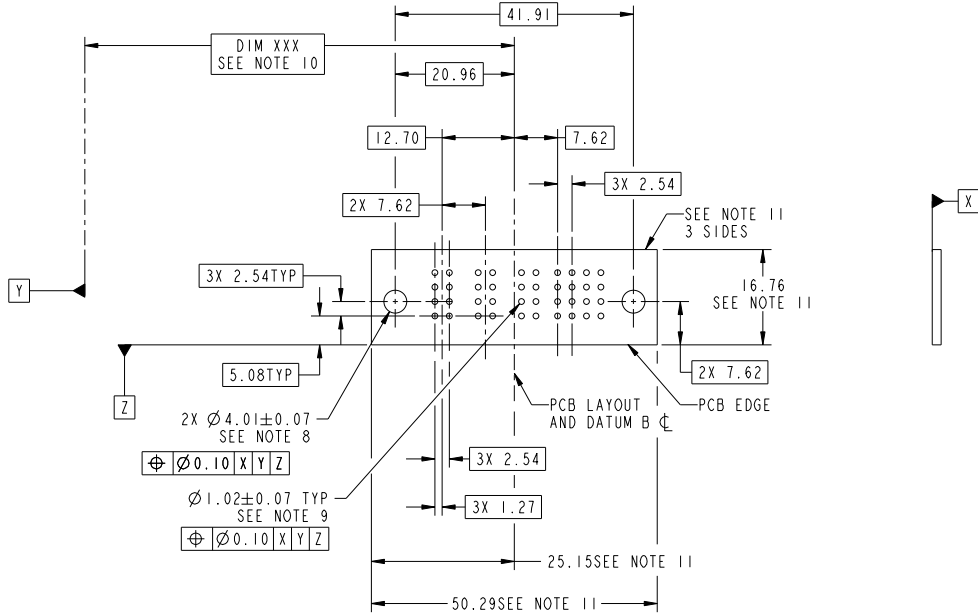
mat'l code		SEE NOTE		tolerances unless otherwise specified		CUSTOMER		FCI www.fciconnect.com	
ltr	ecn no.	dr	date	linear	0.X ± 0.5	projection	COPY	title	3P + 16S
A					0.XX ± 0.25	⊕		RIGHT ANGLE SOLDER HEADER	
				angles	0.XXX ± 0.10			product family	PwrBlade
					0° ± 2°	MM		size	213
				dr	Warren Du 07/07/08	scale		dwg no	51824-005
				enr	JEROME CHEN 07/07/08	1:1		code	2
				chr	GARY HSIEH 07/07/08			sheet	2
				appd	JOSEPH HSIA 07/07/08				
sheet index	revision sheet								

Tous droits strictement réservés. Reproduction ou communication à des tiers  
interdite sous quelque forme que ce soit sans autorisation écrite du propriétaire.  
Propriété de FCI. Droits de reproduction FCI.



All rights strictly reserved. Reproduction or issue to third parties in any  
form whatever is not permitted without written authority from the proprietor.  
Property of FCI. Copyright FCI.

PRODUCT NUMBER  
51824-005...  
NOTE: 3



RECOMMENDED PCB LAYOUT

mat'l code		SEE NOTE		tolerances unless otherwise specified		CUSTOMER	
ltr	ecm no.	dr	date	linear	0.X ± 0.5	COPY	www.fciconnect.com
A				linear	0.XX ± 0.25	projection	
				angles	0.XXX ± 0.10		title
					0° ± 2°		product family
				dr	Warren Du 07/07/08	← MM →	RIGHT ANGLE SOLDER HEADER
				enr	JEROME CHEN 07/07/08	scale	product family
				chr	GARY HSIEH 07/07/08	1:1	PwrBlade
				appd	JOSEPH HSIA 07/07/08		code
sheet index	revision sheet						size
							dwg no
							A 51824-005
							sheet
							3

1 | 2

Pro/E

PDM: Rev: A

STATUS: Released

Printed: Dec 20, 2010

1 | 2

3 |

4

A

A

B

B

cage code 22536

Tous droits strictement réservés. Reproduction ou communication à des tiers interdite sous quelque forme que ce soit sans autorisation écrite du propriétaire. Propriété de FCI. Droits de reproduction FCI.



All rights strictly reserved. Reproduction or issue to third parties in any form whatever is not permitted without written authority from the proprietor. Property of FCI. Copyright FCI.

<b>PRODUCT NUMBER</b>	51824-005..		
	NOTE: 3		
<b>NOTES:</b>			
1. DIMENSIONS AND TOLERANCES ARE IN ACCORDANCE WITH ASME Y14.5M, 1994 UNLESS OTHERWISE SPECIFIED.			
<b>CONNECTOR NOTES:</b>			
2. HOUSING MATERIAL: UL 94 V-0 GLASS FILLED HIGH-TEMP THERMOPLASTIC POWER CONTACT MATERIAL: COPPER ALLOY SIGNAL PIN MATERIAL: COPPER ALLOY			
3. 51824-005;51824-005LF PLATING SPEC. SEE PRINT:100641831			
4. MANUFACTURER'S NAME, P/N, AND DATE CODE TO APPEAR ON THIS SURFACE.			
5. PRODUCT SPECIFICATION GS-12-149. APPLICATION SPECIFICATION BUS-20-067.			
6. PACKAGED IN TRAYS.			
<b>PCB NOTES:</b>			
7. ALL HOLE DIAMETERS ARE FINISHED HOLE SIZE.			
8. MOUNTING HOLES, WHERE APPLICABLE, ARE UNPLATED.			
9. $\varnothing 1.151 \pm 0.025$ DRILLED HOLES PLATED WITH 0.008 MIN SnPb OR Sn OVER 0.03 TO 0.08 Cu PLATING TO ACHIEVE $\varnothing 1.02 \pm .07$ HOLE.			
10. "DIM XXX" TO BE DETERMINED BY THE CUSTOMER.			
11. CONNECTOR KEEP-OUT ZONE.			

mat'l code				SEE NOTE 2		tolerances unless otherwise specified		CUSTOMER		www.fciconnect.com	
ltr	ecn no.	dr	date	linear	$0.X \pm 0.5$	projection	COPY		title		
A					$0.XX \pm 0.25$				3P + 16S		
				angles	$0.XXX \pm 0.10$	$0^\circ \pm 2^\circ$			RIGHT ANGLE SOLDER HEADER		
				dr	Warren Du 07/07/08	MM		product family		code	
				enr	JEROME CHEN 07/07/08	←		PwrBlade		213	
				chr	GARY HSIEH 07/07/08	scale		size		sheet	
				appd	JOSEPH HSIA 07/07/08	1:1		A 51824-005		4 of 4	
sheet index	revision sheet										

1 | 2

Pro/E

**PDM: Rev: A**

STAT: **Released**

Printed: Dec 20, 2010