

Excellent Integrated System Limited

Stocking Distributor

Click to view price, real time Inventory, Delivery & Lifecycle Information:

[FCI](#)
[51871-011](#)

For any questions, you can email us directly:
sales@integrated-circuit.com

Tous droits strictement réservés. Reproduction ou communication à des tiers interdite sans quelque forme que ce soit sans autorisation écrite du propriétaire. Propriété de c FCI. Droits de reproduction FCI.



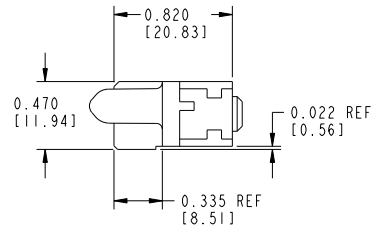
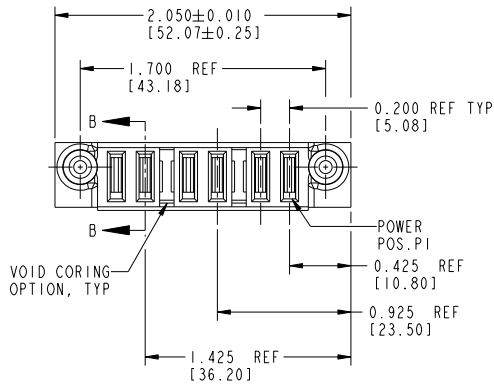
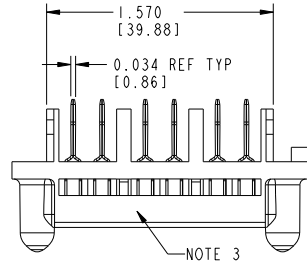
All rights strictly reserved. Reproduction or issue to third parties in any form whatsoever is not permitted without written authority from the proprietor. Property of FCI. Copyright FCI.

1 | 2

3 |

4

PRODUCT NUMBER
51871-00X_
NOTE: 2



CODE	DIM "M" ±0.010 [0.25]	TERMINATION AREA ±0.010 [0.25]	CONTACT TYPE
PG	0.042 [1.07]	0.393 [9.98]	POWER
PH	0.092 [2.34]	0.393 [9.98]	POWER

mat'l code		NOTE 1		tolerances unless otherwise specified		CUSTOMER		FCI	
ltr	ech no.	dr	date	linear	.XX±.01/0.X±0.3	COPY		www.fciconnect.com	
A	V10163	CGD	01/18/01	angles	.XXX±.005/0.XX±0.13	projection		title 6P RIGHT ANGLE RECEPTACLE	
B	V10956	CGD	03/02/01		.XXXX±.0020/0.XXX±0.050	INCH/MM		product family PwrBlade code 213	
C	V20037	JWS	01/09/02		0°±2°	scale		size dwg no 51871 sheet 1 of 2	
D	DG05-0530	GuoJM	12/09/05	dr	E. KORFF 10-10-00	1:1			
E	DG08-0251	W D	09/16/08	engr	E. TREECE 10-10-00				
				chr	E. TREECE 10-10-00				
				appd	E. TREECE 10-10-00				
sheet index	revision sheet	E	E						
		1	2						

1 | 2

Pro/E

PDM: Rev: E

STATUS: Released

Printed: Dec 20, 2010

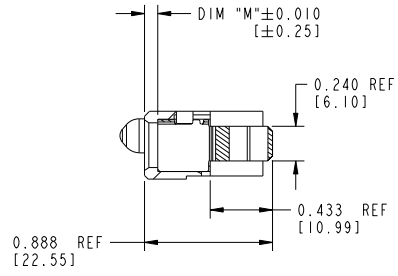
Tous droits strictement réservés. Reproduction ou communication à des tiers interdite sans que la forme que ce soit sans autorisation écrite du propriétaire. Propriété de c FCI. Droits de reproduction FCI.

All rights strictly reserved. Reproduction or issue to third parties in any form whatsoever is not permitted without written authority from the proprietor. Property of FCI. Copyright FCI.

PRODUCT No.	ROWS	POWER							
51871-001-- NOTE: 2	D C B A	E2	P6	P5	P4	P3	P2	P1	E1

PRODUCT No.	ROWS	POWER							
51871-002	D C B A	E2	P6	P5	P4	P3	P2	P1	E1

OBSOLETE



SECTION B-B

CONNECTOR NOTES:

- HOUSING MATERIAL: UL 94 V-0 GLASS FILLED HIGH TEMP THERMOPLASTIC
POWER CONTACT MATERIAL: COPPER ALLOY
- SEE ITEM 5 & 6 IN PRINT 10064183 FOR PLATING SPEC OF 51871-00X AND 51871-00XLF RESPECTIVELY.
- "MANUFACTURER'S" NAME, P/N, AND DATE CODE TO APPEAR ON THIS SURFACE
- PRODUCT SPECIFICATION GS-12-149
- A/E SYMBOL WILL BE NEXT TO ANY DIMENSION, VIEW, OR NOTE WHICH HAS BEEN MODIFIED WITH THE CURRENT DRAWING REVISION.

mat'l code		NOTE 1		tolerances unless otherwise specified		CUSTOMER		FCI		www.fciconnect.com	
ltr	ech no.	dr	date	linear	.XX±.01/0.X±0.3	projection	COPY	title	6P RIGHT ANGLE RECEPTACLE		
E				angles	.XXX±.005/0.XX±0.13			product family	PwrBlade		code
				dr	.XXX±.0020/0.XXX±0.050			size	51871		sheet
				enr	0°±2°	scale		dwg no	A		2
				chr	E. KORFF 10-10-00						
				appd	E. TREECE 10-10-00						
sheet index	revision sheet										

Pro/E

PDM: Rev:E

STATUS: **Released**

Printed: Dec 20, 2010