

## Excellent Integrated System Limited

Stocking Distributor

Click to view price, real time Inventory, Delivery & Lifecycle Information:

[FCI](#)

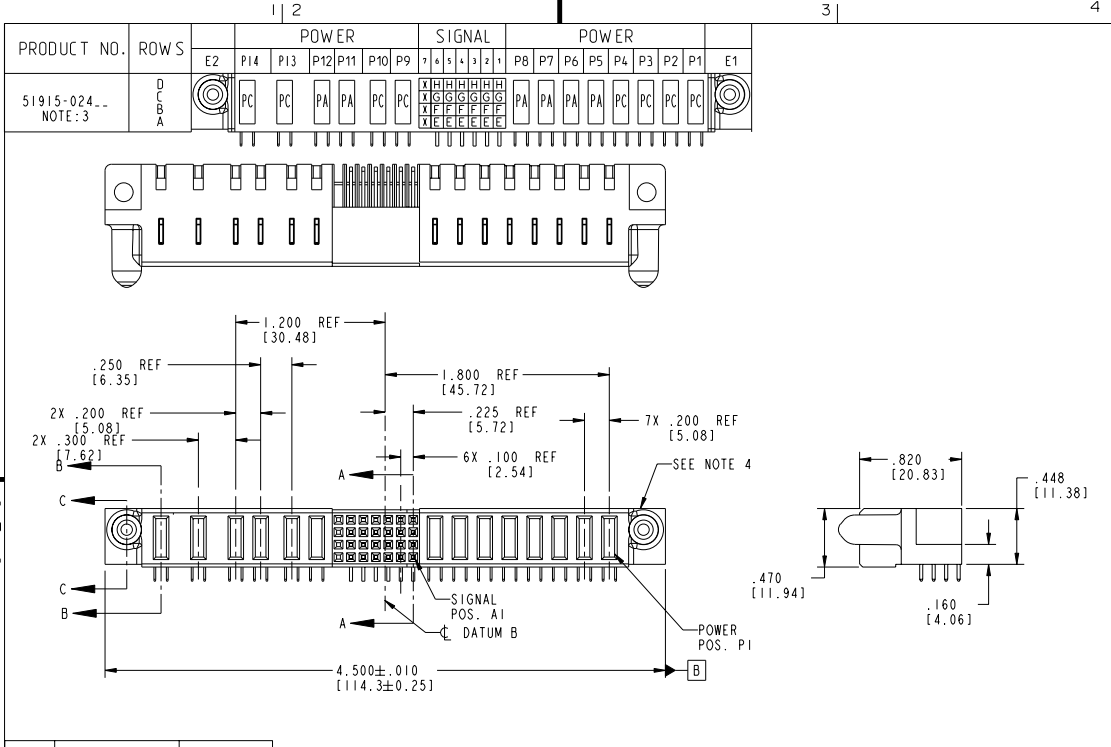
[51915-024](#)

For any questions, you can email us directly:

[sales@integrated-circuit.com](mailto:sales@integrated-circuit.com)

Tous droits strictement réservés. Reproduction ou communication à des fins inférieures sans autorisation écrite du propriétaire. Propriété de FCI. Droits de reproduction FCI.

All rights strictly reserved. Reproduction or issue in third parties in any form without written authority from the proprietor. Property of FCI. Copyright FCI.



CODE	DIM "M" MATING LENGTH	CONTACT TYPE
E	N/A [N/A]	SIGNAL
F	N/A [N/A]	SIGNAL
G	N/A [N/A]	SIGNAL
H	N/A [N/A]	SIGNAL
PA	.042 [1.07]	POWER
PC	.092 [2.34]	POWER
X	OMITTED	OMITTED

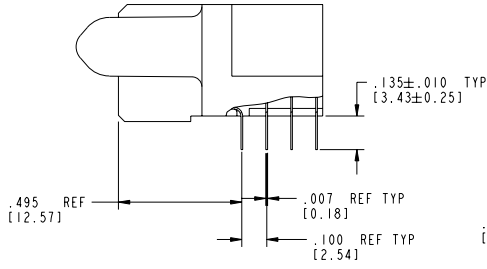
mat'l code		SEE NOTE 2		tolerances unless otherwise specified	
ltr	ecm no.	dr	date	linear	XX±.01/0.XX±0.3
A	V03-0367	MEM	3/31/03	linear	XXX±.005/0.XX±0.13
B	D005-0365	CS	09/28/05	linear	XXXX±.0020/0.XX±0.051
				angles	0°±
		dr		M. MOSTOLLER	3/31/03
		enr		M. MOSTOLLER	3/31/03
		chr		H. BREWBAKER	3/31/03
		oppd		M. MOSTOLLER	3/31/03
sheet index	revision sheet	B 1	B 2	B 3	B 4

CUSTOMER		FCI	
www.fciconnect.com		www.fciconnect.com	
COPY		projection	
title 8P + 28S + 4P + 2ACP		R/A SOLDER RECEPTACLE	
product family PwrBlade		code 213	
size dwg no 51915-024		sheet 1 of 4	
scale 1:1		code code 22526	

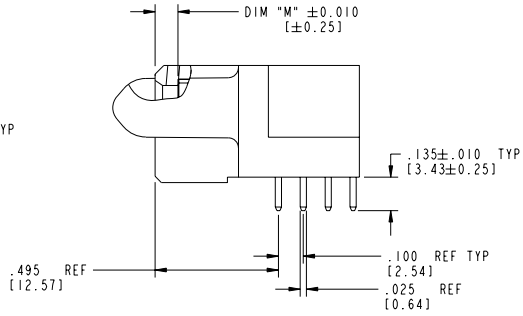
Tous droits strictement réservés. Reproduction ou communication, en des lieux interdite sans autorisation écrite du propriétaire. Property of FCI. Copyright FCI.

All rights strictly reserved. Reproduction or issue in third parties in any form wherever is not permitted without written authority from the proprietor. Property of FCI. Copyright FCI.

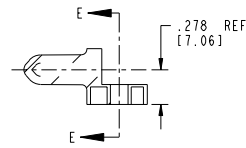
PRODUCT NUMBER  
51915-024  
NOTE: 3



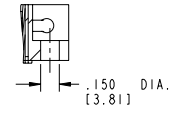
BROKEN-OUT SECTION A-A  
SCALE 2:1



BROKEN-OUT SECTION B-B  
SCALE 2:1



SECTION C-C



PARTIAL SECTION E-E

mat'l code		SEE NOTE 2	tolerances unless otherwise specified	CUSTOMER	FCI		www.fciconnect.com
ltr	ecm no.	dr	date	linear	XX ± .01/0	YY ± 0.3	projection
B				angles	XXX ± .005/0	YY ± 0.13	title 8P + 28S + 4P + 2ACP R/A SOLDER RECEPTACLE
				dr	XXX ± .0020/0	YY ± 0.051	product family PwrBlade
				engr	0° ± 7°		code 213
				chr	W. MOSTOLLER	3/31/03	size A
				appd	H. BREWBAKER	3/31/03	dwg no 51915-024
					W. MOSTOLLER	3/31/03	sheet 2 of 4
sheet index	revision sheet			scale	1:1		

Pro/E

code code 22526

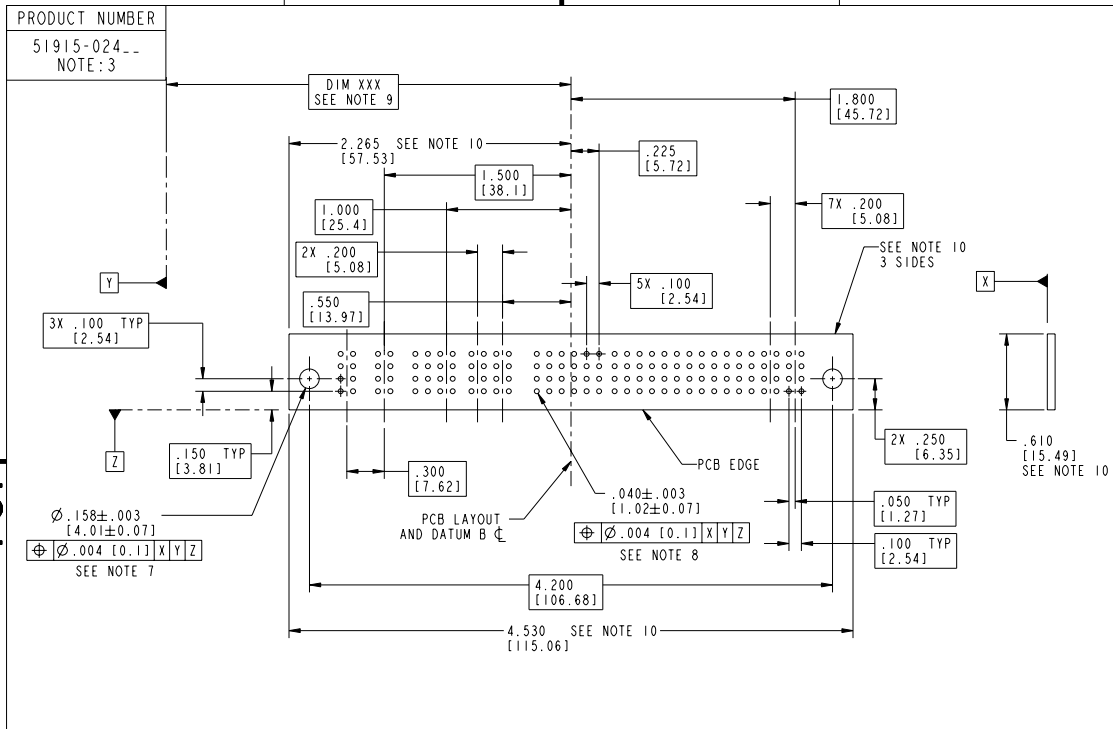
**PDM: Rev:B**

**STATUS: Released**

Printed: Dec 20, 2010

Tous droits strictement réservés. Reproduction ou communication de ces lignes interdite sans autorisation écrite du propriétaire. Property of FCI. Droits de reproduction FCI.

All rights strictly reserved. Reproduction or issue to third parties in any form without written authority from the proprietor. Property of FCI. Copyright FCI.



mat'l code				SEE NOTE 2	tolerances unless otherwise specified	CUSTOMER	
ltr	ecn no.	dr	date	linear	XX±.01/0.XX±0.3	www.fciconnect.com	
B				linear	XXX±.005/0.XX±0.13	title 8P + 28S + 4P + 2ACP	
				angles	XXX±.0020/0.XX±0.051	R/A SOLDER RECEPTACLE	
				dr	W. MOSTOLLER 3/31/03	product family PwrBlade code 213	
				engr	W. MOSTOLLER 3/31/03	size dwg no 51915-024 sheet 3 of 4	
				chr	H. BREWBAKER 3/31/03	scale 1:1	
				appd	W. MOSTOLLER 3/31/03	code code 22526	
sheet index	revision sheet						

Tous droits strictement réservés. Reproduction ou communication de ces lignes interdite sans autorisation écrite de FCI. Propriété de FCI. Droits de reproduction FCI.

All rights strictly reserved. Reproduction or issue to third parties in any form whatever is not permitted without written authority from the proprietor. Property of FCI. Copyright FCI.

PRODUCT NUMBER  
51915-024  
NOTE: 3

NOTES:

1. DIMENSIONS AND TOLERANCES ARE IN ACCORDANCE WITH ASME Y14.5M, 1994 UNLESS OTHERWISE SPECIFIED.

CONNECTOR NOTES:

2. HOUSING MATERIAL: UL 94 V-0 GLASS FILLED HIGH-TEMP THERMOPLASTIC  
POWER CONTACT MATERIAL: COPPER ALLOY  
SIGNAL PIN MATERIAL: COPPER ALLOY

3. PLATING:

51915-024 Singal Pin: 30u"/0.76um Au OVER 50u"/1.27um Ni ON THE CONTACT AREA,  
AND 100u"/2.54um SnPb PLATING OVER 50u"/1.27um Ni ON THE TERMINATION SECTION.  
Power Pin: 30u"/0.76um Au OVER 50u"/1.27um Ni ON THE CONTACT AREA,  
AND 100u"/2.54um SnPb PLATING OVER 50u"/1.27um Ni ON THE TERMINATION SECTION.

51915-024LF Singal Pin: 30u"/0.76um Au OVER 50u"/1.27um Ni ON THE CONTACT AREA,  
AND 78u"/2.00um Sn PLATING OVER 50u"/1.27um Ni ON THE TERMINATION SECTION.  
Power Pin: 30u"/0.76um Au OVER 50u"/1.27um Ni ON THE CONTACT AREA,  
AND 78u"/2.00um Sn PLATING OVER 50u"/1.27um Ni ON THE TERMINATION SECTION.

PART NUMBER 51915-024LF MEETS EUROPEAN UNION DIRECTIVE AND OTHER COUNTRY REGULATIONS AS DESCRIBED IN GS-22-008.

THE HOUSING WILL WITHSTAND EXPOSURE TO 260° PEAK TEMPERATURE FOR 10 SECONDS IN A WAVE SOLDER APPLICATION WITH A CIRCUIT BOARD.

4. MANUFACTURER'S NAME, P/N, AND DATE CODE TO APPEAR ON THIS SURFACE.

5. PRODUCT SPECIFICATION GS-12-149  
APPLICATION SPECIFICATION BUS-20-067.

PCB NOTES:

6. ALL HOLE DIAMETERS ARE FINISHED HOLE SIZE.

7. MOUNTING HOLES, WHERE APPLICABLE, ARE UNPLATED.

8. Ø.0453±.0010 [1.151±0.025] DRILLED HOLES PLATED WITH .0003 [0.008] MIN SnPb OVER .001 [0.03] TO .003 [0.08] Cu PLATING TO ACHIEVE Ø.040±.003 [1.02±.07] HOLE.

9. "DIM XXX" TO BE DETERMINED BY THE CUSTOMER.

10. CONNECTOR KEEP-OUT ZONE.

mat'l code		SEE NOTE 2	tolerances unless otherwise specified	CUSTOMER	FCI	
ltr	ecm no.	dr	date	linear	projection	www.fciconnect.com
B				linear	projection	title 8P + 28S + 4P + 2ACP
				angles	projection	R/A SOLDER RECEPTACLE
				dr	INCH/MM	product family PwrBlade code 213
				engr	scale	size dwg no 51915-024 sheet 4 of 4
				chr	1:1	
				appd		
sheet index	revision sheet					

Pro/E

PDM: Rev:B

STATUS: Released

Printed: Dec 20, 2010