

Excellent Integrated System Limited

Stocking Distributor

Click to view price, real time Inventory, Delivery & Lifecycle Information:

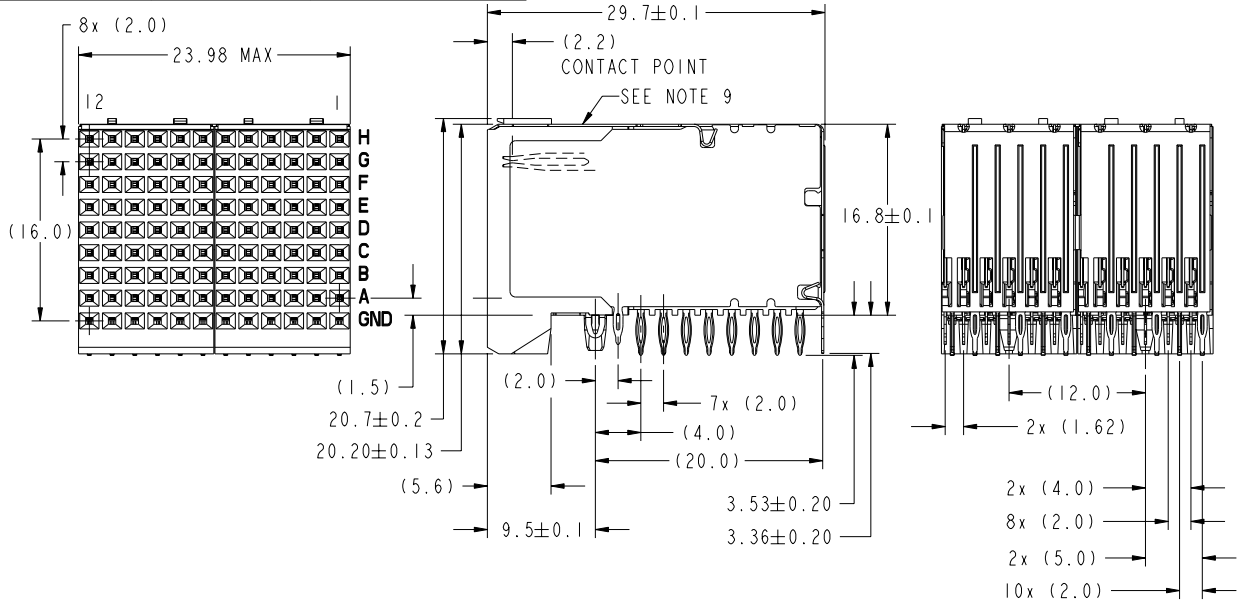
[FCI](#)

[10041744-302LF](#)

For any questions, you can email us directly:

sales@integrated-circuit.com

PRODUCT NO.	PLATING PERFORMANCE LEVEL	APPLICATION
10041744-102	TELCORDIA CO	STANDARD
10041744-102LF		LEAD FREE (NOTE 13)
10041744-302	CUSTOMER SPECIAL	STANDARD
10041744-302LF		LEAD FREE (NOTE 13)
10041744-502	TELCORDIA UE	STANDARD
10041744-502LF		LEAD FREE (NOTE 13)



mat'l code				tolerances unless otherwise specified		CUSTOMER		FCI	
SEE NOTE 3						COPY		www.fciconnect.com	
l/r	ecn no.	dr	date	linear	0.X ±0.3	projection		title: RIGHT ANGLE SIGNAL RECEPT.	
A	V04-0539	TAB	2004-06-02		0.XX ±0.10	MM		8 ROW, 96 POSITION	
B	V04-0663	TAB	2004-07-02		0.XXX ±0.050	scale		product family METRAL 1000	
C	V05-0772	VS	2005-08-29	angles	0° ±2°	2:1		code 213	
D	V06-0573	DCH	2006-06-14	dr	T. BRUNGARD 2004-06-02	A		sheet 1 of 3	
E	V07-0317	DCH	2007-04-25	eng	J. VOLSTORF 2004-06-02			dwg no 10041744	
F	V07-0706	HTB	2007-12-10	chr	J. VOLSTORF 2004-06-02				
G	V08-0136	HTB	2008-03-19	appd	J. VOLSTORF 2004-06-02				
sheet index	revision sheet	G	G	G					
		1	2	3					

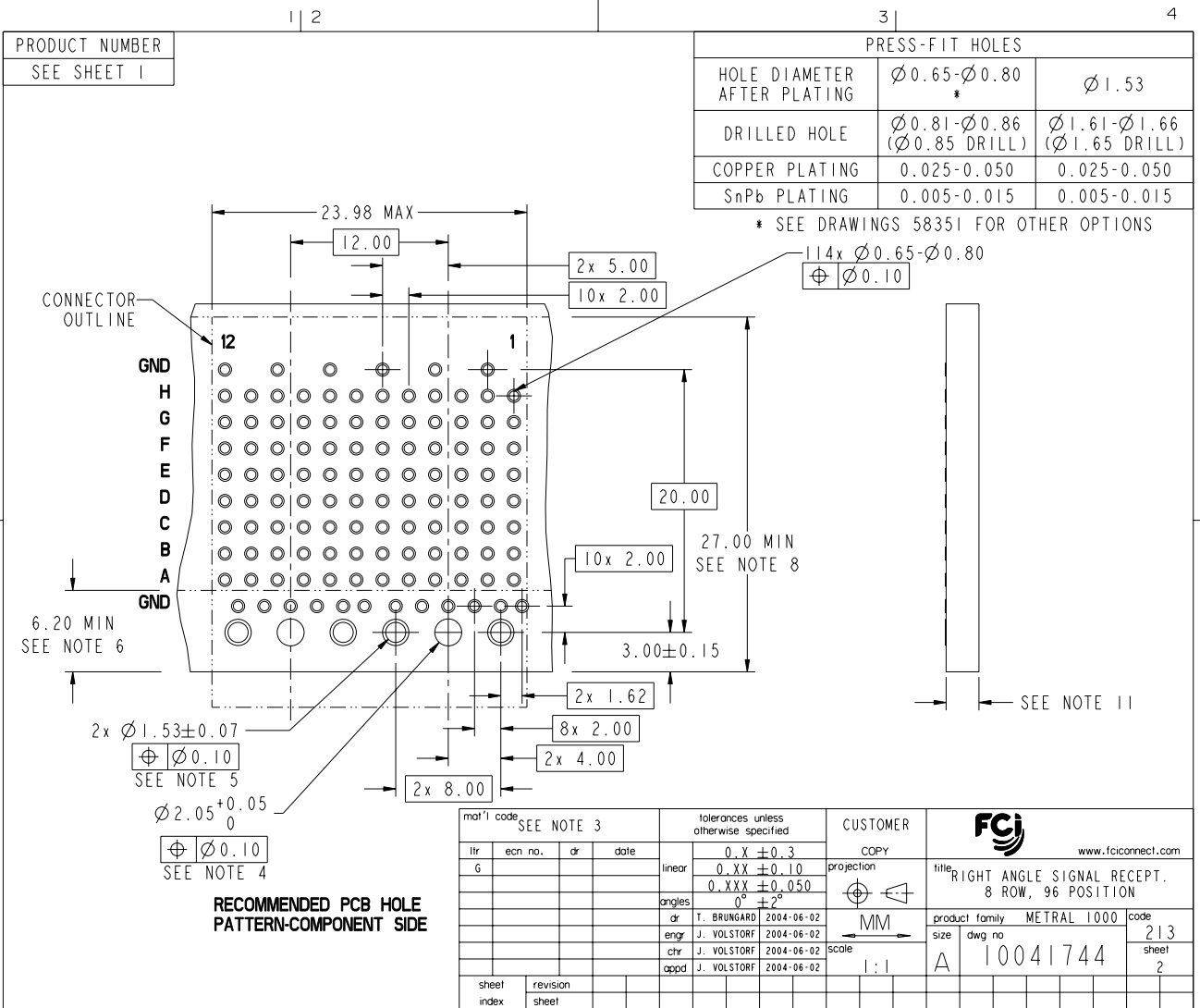


This document is the property of and embodies CONFIDENTIAL and PROPRIETARY information of FCI. No part of the information shown on this document may be used in any way or disclosed without the written consent of FCI. Copyright FCI.

REV C - 2008-04-18

Pro/E cage code 22526

PDM: Rev:G STATUS: **Released** Printed: May 13, 2011



This document is the property of and embodies CONFIDENTIAL and PROPRIETARY information of FCI. No part of the information shown on this document may be used in any way or disclosed without the written consent of FCI. Copyright FCI.

REV C - 2008-04-18

PRODUCT NUMBER
SEE SHEET 1

NOTES

1. UNLESS OTHERWISE SPECIFIED, ALL DIMENSIONS AND TOLERANCES ARE IN ACCORDANCE WITH ASME Y14.5M, 1994
2. HOUSING MATERIAL: LIQUID CRYSTAL POLYMER, GLASS FILLED
FLAME RETARDANT ACC. UL94V-0
GROUND SHIELD MATERIAL: COPPER ALLOY
SIGNAL CONTACT MATERIAL: COPPER ALLOY
3. PLATING:
ON PRESS-FIT TAIL AREA: SnPb OR Sn ONLY(LF)
ON MATING CONTACT POINTS: MEETS PERFORMANCE LEVEL SHOWN IN TABLE ON SHEET 1.
4. Ø2.05 HOLE IS UNPLATED
5. Ø1.53 PLATED HOLES (2X) ARE FOR GROUNDS
6. AVOID TRACES IN THIS AREA ON TOP OF PCB DUE TO EXPOSED GROUND SHIELD
7. UNDERPLATING FOR SHIELD AND SIGNAL CONTACTS IS 1.3 µm Ni MIN
8. COMPONENT KEEP OUT ZONE FOR PRESS BLOCK CLEARANCE
9. PRODUCT MARKING: DATE AND LOT CODE
10. SEE GS-20-018 FOR APPLICATION OF CONNECTOR TO PCB
11. PCB THICKNESS RANGE: 1.3mm TO 3.4mm
12. SEE PRODUCT SPECIFICATION GS-12-134 FOR PRODUCT PERFORMANCE CHARACTERISTICS.

13. THE PRODUCTS WHERE THE PART NUMBER ENDS IN LF MEET EUROPEAN UNION DIRECTIVES AND OTHER COUNTRY REGULATIONS AS DESCRIBED IN GS-22-008. ALL PRODUCTS WILL WITHSTAND EXPOSURE TO 260° FOR 60 SECONDS IN A CONVECTION, INFRA-RED OR VAPOR PHASE REFLOW OVEN.

mat'l code SEE NOTE 3				tolerances unless otherwise specified		CUSTOMER		FCI www.fciconnect.com	
ltr	ecn no.	dr	date	linear	0.X ±0.3	projection	COPY		
G					0.XX ±0.10		title: RIGHT ANGLE SIGNAL RECEPT. 8 ROW, 96 POSITION		
				angles	0.XXX ±0.050		product family METRAL 1000 code 213		
					0° ±2°		size		sheet 3
		dr	T. BRUNGARD	2004-06-02	scale		A		10041744
		eng	J. SWAIN	2004-06-02	1:1				
		chr	J. VOLSTORF	2004-06-02					
		appd	J. VOLSTORF	2004-06-02					
sheet index	revision sheet							cage code 22526	

This document is the property of and embodies CONFIDENTIAL and PROPRIETARY information of FCI. No part of the information shown on this document may be used in any way or disclosed without the written consent of FCI. Copyright FCI.