

Excellent Integrated System Limited

Stocking Distributor

Click to view price, real time Inventory, Delivery & Lifecycle Information:

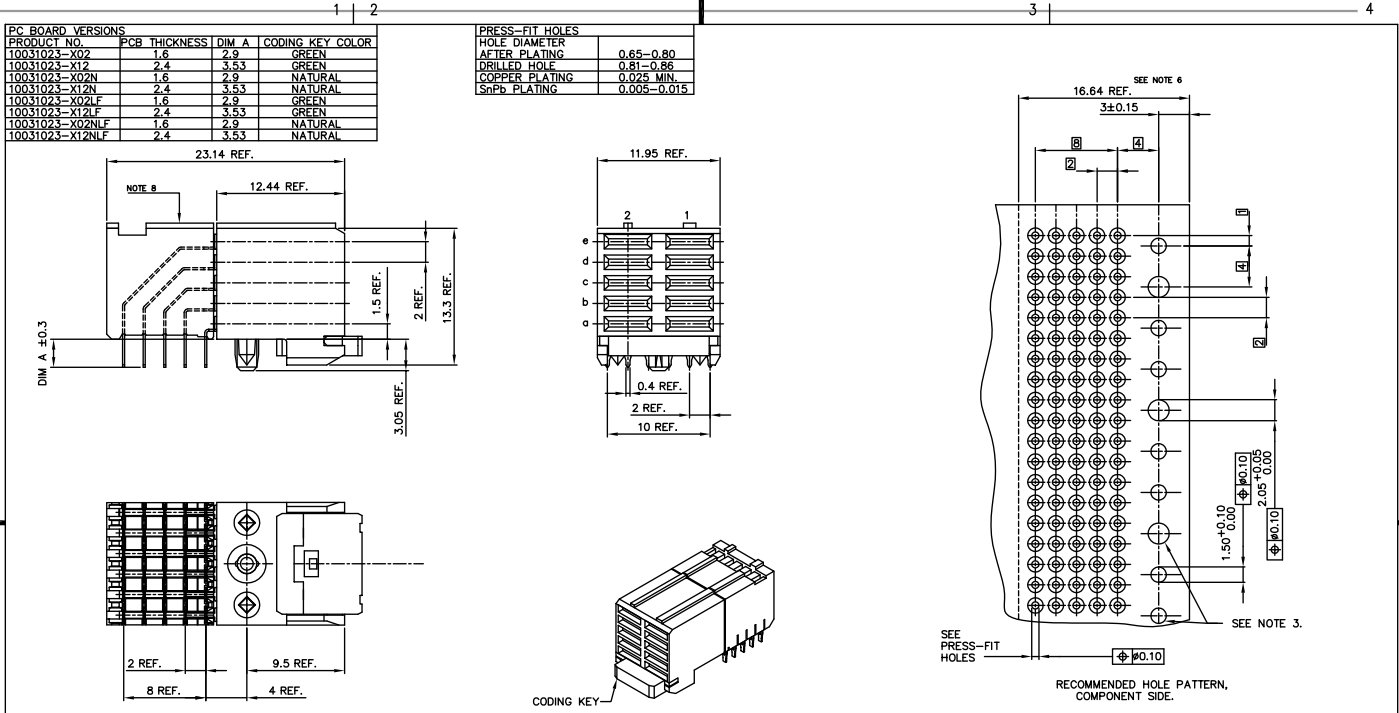
[FCI](#)
[10031023-102NLF](#)

For any questions, you can email us directly:
sales@integrated-circuit.com

Tous droits strictement réservés. Reproduction ou communication a des tiers interdite sous quelque forme que ce soit sans autorisation écrite du propriétaire. Propriété de c FCI. Droits de reproduction FCI.



All rights strictly reserved. Reproduction or issue to third parties in any form whatever is not permitted without written authority from the proprietor. Property of FCI. Copyright FCI.



CONFIDENTIAL

PRODUCT NR	PLATING CONTACT AREA	UNDERPLATING
10031023-1Y2/1Y2LF	0.8 um GOLD	1.3 um Ni min.
10031023-2Y2/2Y2LF	2.0 um GOLD	1.3 um Ni min.
10031023-3Y2/3Y2LF	1.3 um GOLD	1.3 um Ni min.
10031023-8Y2/8Y2LF	0.8 um GXT	1.3 um Ni min.

mat'l. code		tolerances unless otherwise specified		CUSTOMER COPY	
itr	ecm no	dr	date	projection	title
A	T03-0279	M W	07/09/03	MM	5R RECEPTACLE POWER RA PF 12mm ASSEMBLY WITH CODING KEY
B	0605-0496	C L	051125		
C	0608-0171	TER	9/06/08		
		dr	MAGGIE WU 07/01/03	scale	product family METRAL (tm)
		enrg	JEFF.HSIEH 07/01/03	1.5:1	code
		chr	PAUL WANG 07/01/03		size
		appd	JENN TSAO 07/01/03		dwg no
sheet	revision	C			10031023
index	sheet	1			code
					22526