

Excellent Integrated System Limited

Stocking Distributor

Click to view price, real time Inventory, Delivery & Lifecycle Information:

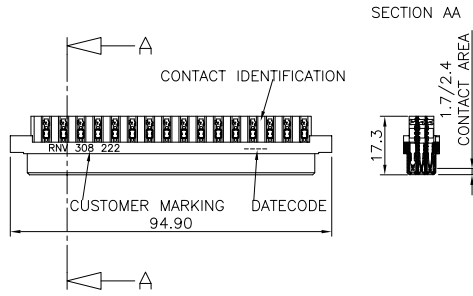
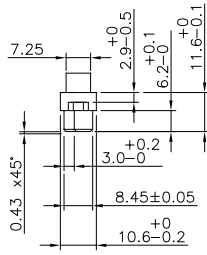
[FCI](#)
[BPS8B96NND200L9LF](#)

For any questions, you can email us directly:
sales@integrated-circuit.com

PRODUCT NUMBER BPS8B96NND200L9
PRODUCT NUMBER BPS8B96NND200L9LF

LEADED PRODUCT
LEAD FREE OR RoHS COMPATIBLE PRODUCT

NOTES:
1. THE "LF" PRODUCTS MEET EUROPEAN UNION DIRECTIVES AND OTHER COUNTRY REGULATIONS AS DESCRIBED IN GS-22-008.
2. LEAD FREE OR RoHS DIRECTIVE LABELING TO BE PROVIDED AS PER GS-14-920 FOR RoHS COMPATIBLE/ LEAD FREE VERSION.



PERFORMANCES CHARACTERISTICS

VOLTAGE RATING : 250 VAC (rms)
CURRENT RATING : 1,5 A AT 25 °C, 1 A AT 70 °C.
INSULATION RESISTANCE : 1000 MΩ INITIAL, 100 MΩ MIN. AFTER TEST.
DIELECTRIC WITHSTANDING VOLTAGE : 1000 VAC (rms).
CONTACT RESISTANCE : 15 mΩ MAX. INITIAL, 5 mΩ MAX. RISE OF INITIAL VALUE AFTER TEST.
OPERATING TEMPERATURE*: -40 °C TO +125 °C.
INSERTION FORCE : 1 N MAX./CONTACT.
WITHDRAWAL FORCE : 0,2 N MIN./CONTACT.

*DEPENDING ON THE CABLE, THE MAX. TEMPERATURE CAN BE LOWER. FOR STANDARD PVC INSULATED CABLE : 105 °C MAX.

CONSTRUCTION

BODY MATERIAL : GLASS-REINFORCED THERMOPLASTIC (UL94V-0).
CONTACT MATERIAL : PHOSPHOR BRONZE.
CONTACT FINISH : 3 μm Au MIN. OVER 2 μm Ni MIN. IN CONTACT AREA, 3μm SnPb MAX. OVER 1.5μm Ni MAX. ON I.D.C TERMINAL FOR LEADED PRODUCTS Sn (MATTE TIN) OVER Ni ON I.D.C TERMINAL FOR LEAD FREE PRODUCTS

PART NUMBERS

BPS8B96NND200EC CONNECTOR FOR WIRE SIZE AWG24, AWG26.
BPS8B96NND200CLF CONNECTOR FOR WIRE SIZE AWG24, AWG26.

(CONTACT IDENTIFICATION : 2).

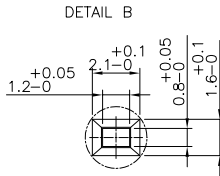
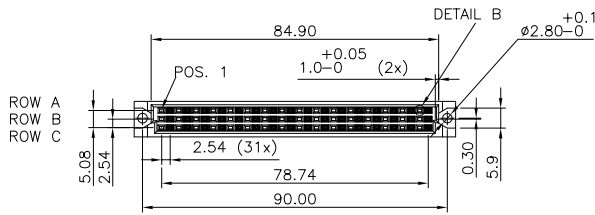
CUSTOMER MARKING

PARTNUMBER ERICSSON : RVN 311 302

DATECODE

YEAR & WEEKCODE EXAMPLE : 9950

OTHER REQUIREMENTS IN ACC. WITH: ERICSSON SPEC. 1301 RVN 311 UEN



CONTACT ARRANGEMENT

■ CAVITIES EQUIPPED WITH CONTACTS
□ CAVITIES WITHOUT CONTACTS

mat'l. code		surface		tolerance	projection	product family	
SEE NOTE		ISO 1302		ISO 406 ISO 1101		BPS8	
ltr ecn no dr date		tolerances unless otherwise specified		angles		title	
A	F00819	DLE	2000-10-18	linear	0.1±0.2	ASSY BPS8	
B	105-0156	MINI	2005-09-04	±1'	0.01±0.1	96 POS. A,B,C LOADED SPECIAL	
C	106-0067	MINI	2006-06-01	scale -		dwg no sheet 1 of 1 size	
		dr D.LEGRAND 2000-10-18		FCI		55368 A3	
		enrg J.F.NOTTEAU 2000-10-18		type Product Customer Drawing			
		chr RAKHEE GEORGE 2006-06-01					
		appRRAKHEE GEORGE 2006-06-01					
sheet index	revision sheet	B	1				