

Excellent Integrated System Limited

Stocking Distributor

Click to view price, real time Inventory, Delivery & Lifecycle Information:

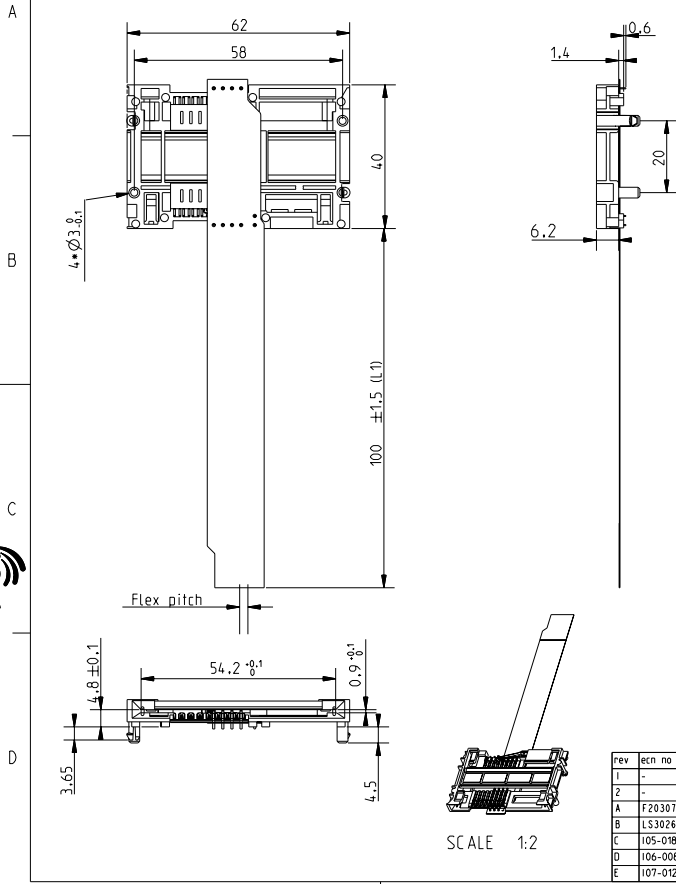
[FCI](#)

[7364L2622F04LF](#)

For any questions, you can email us directly:

sales@integrated-circuit.com

PART NUMBER	LEAD FREE VERSION	FLEX P/N	LI	FLEX PITCH
7364L2622F04	7364L2622F04LF	P06683B	100	1.25
7364L2622F14	7364L2622F14LF	P08153M	100	1
7364L2622F15	7364L2622F15LF	P08197D	80	1.25



GENERAL:
This smart card reader uses a sliding contact technology
It has been designed for connection by flex-foil

ELECTRICAL PROPERTIES
Insulation resistance : 5000 M Ω
Dielectric withstanding : 750 VAC
Current carrying capacity : 10 µA min. 1A max.
Contact resistance : 100 mΩ (flex foil not included)
Card sensor type : Blade switch normally closed

MECHANICAL PROPERTIES
EMV compatible and according to ISO 7816-2
Contact normal force : between 0.2 N to 0.6 N per contact
Insertion force : 10 N max.
Withdrawal force : 1 N min.
Max. number of mating operations : 10000 card insertions.

READER MATERIAL
Housing : Thermoplastique, 30% GF. Colour black. Rated UL94V0
Contacts and switch : Phosphor bronze
Plating : precoat Nickel 2.5 µm min. all over
Gold 0.4 µm min. on contacts areas
SnPB 3µm on termination contacts
matte tin on termination contacts (for lead free version)
FLEX : See drawing: VJW55112; VJW54446; pitch 1.25 mm
VJW55076; pitch 1 mm

ENVIRONMENT
Operating temperature : -20 °C / +70 °C
Storage temperature : -40 °C / +85 °C

PACKAGING
Trays
Packaging specification : VGN 11619/A

APPLICABLE DOCUMENT
Product specification : VGN11668/A

LEAD FREE VERSION:
"This product meets European Union Directives and other country regulations as described in GS-22-008"
General tolerances: ±0.1mm Angle: ± 5°

rev	ecn no	dr	date
1	-	-	2000/09/06
2	-	-	2001/11/07
A	F20307	DLE	2002/04/30
B	LS3026	JIA	2003/03/03
C	105-0181	NI	2005/12/25
D	106-0084	SSC	2006/06/21
E	107-0127	SSC	2007/09/26

www.fciconnect.com		surface	tolerance std	projection	mm
		ISO 1302	ISO 406 ISO 1101	⊕	←
TOLERANCES UNLESS OTHERWISE SPECIFIED					
Dr	N. TWINCY	2005/12/25	ANGULAR	0.x	±
Eng	N. TWINCY	2005/12/25	L INE A R	0.xx	±
Chr	S. VARMA	2007/09/26	° ±	0.xxx	±
Appr	K. V. SIVADAS	2007/09/26	Product family	-	Spec ref
FCI L26 Connector			catolog no	VJW54927	Rev. E
VXX 27943			See Table	CUSTOMER	sheet 1 of 1

SCALE 1:2