

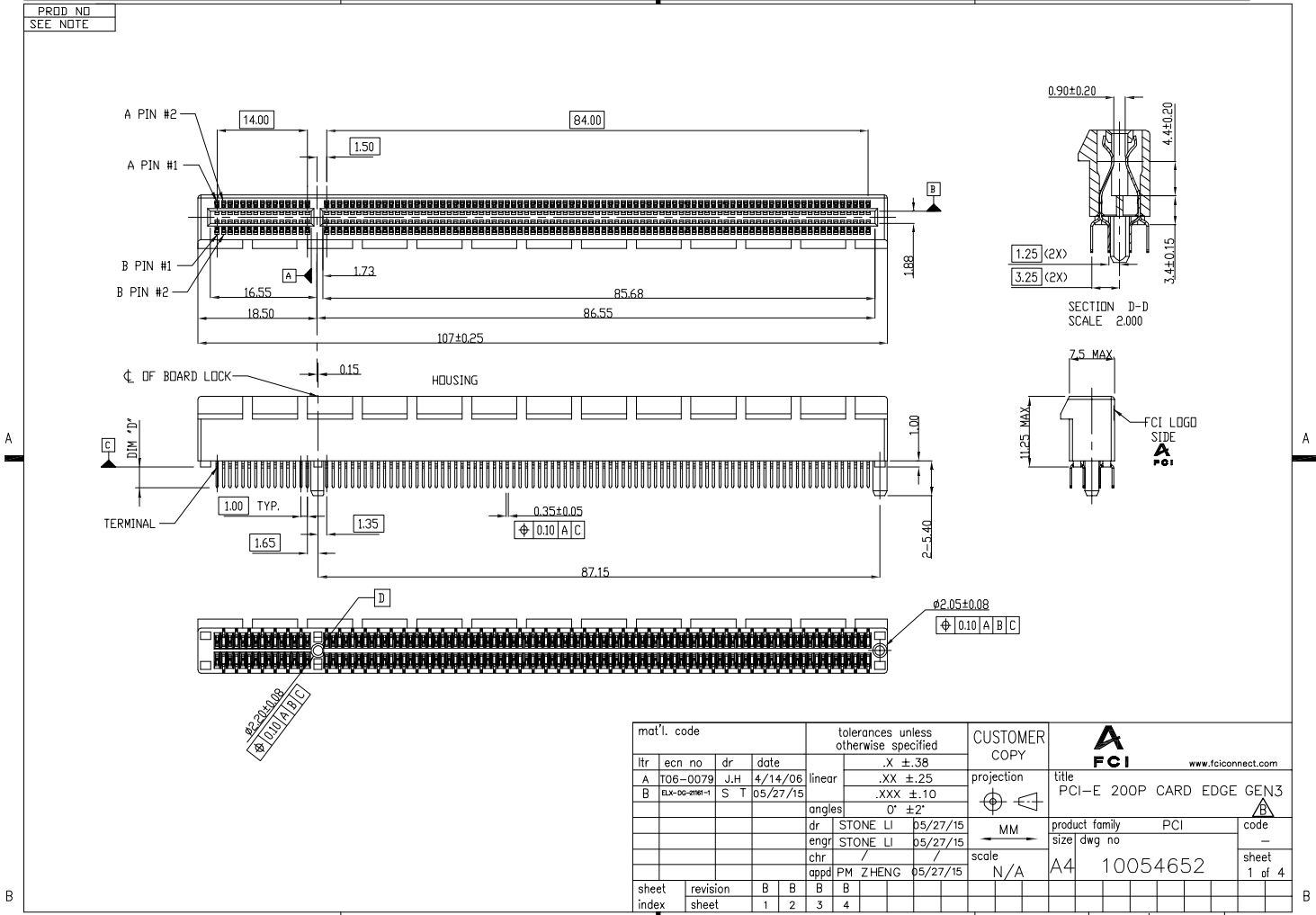
Excellent Integrated System Limited

Stocking Distributor

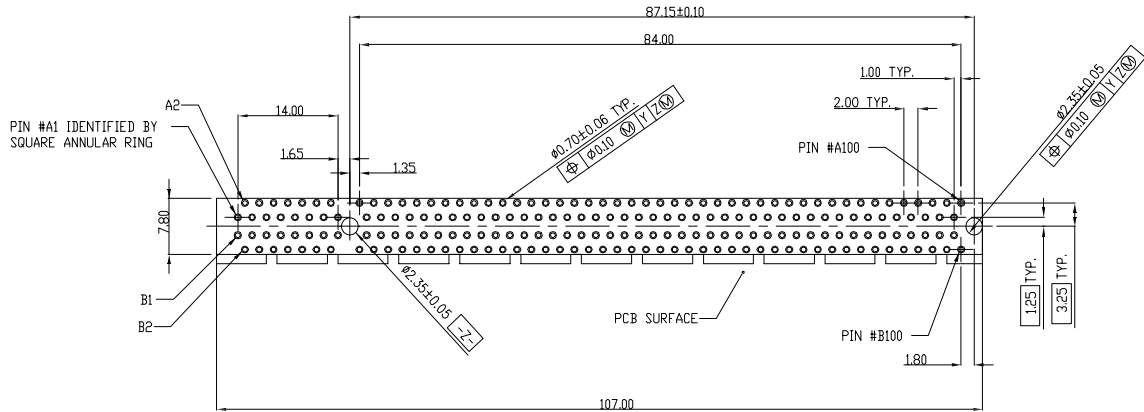
Click to view price, real time Inventory, Delivery & Lifecycle Information:

[FCI](#)
[10054652-10010TLF](#)

For any questions, you can email us directly:
sales@integrated-circuit.com

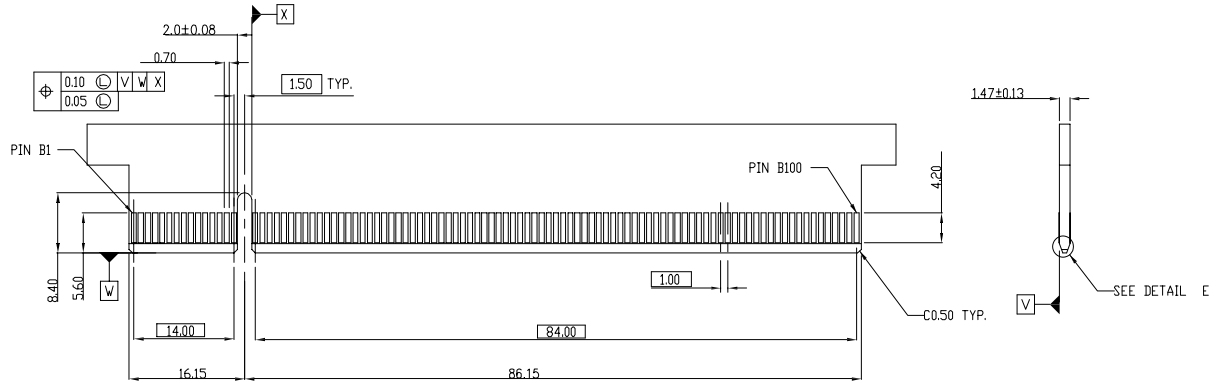


mat'l. code		tolerances unless otherwise specified		CUSTOMER COPY		 www.fciconnect.com		
itr	ecn no	dr	date	linear	.X ±.38	projection	title	
A	T06-0079	J.H	4/14/06		.XX ±.25	 MM	PCI-E 200P CARD EDGE GEN3	
B	ELX-00-2988-1	S T	05/27/15	angles	.XXX ±.10		product family	code
				dr	0° ±2°	scale	PCI	
				engr	STONE LI 05/27/15	N/A	size	dwg no
				chr	STONE LI 05/27/15		A4	10054652
				opd	PM ZHENG 05/27/15			sheet
sheet	revision	B	B	B	B			1 of 4
index	sheet	1	2	3	4			
							cage code	22526

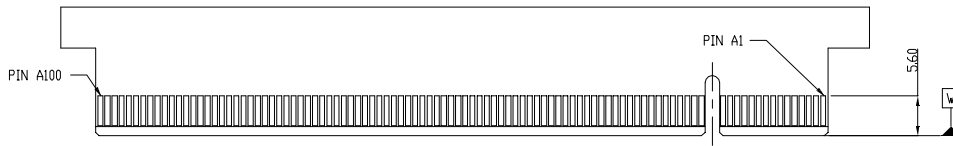


MOTHER BOARD FOOTPRINT PATTERN
CONECTOR SIDE SHOWN

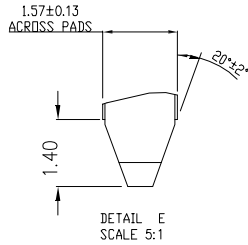
mat'l. code				tolerances unless otherwise specified				CUSTOMER COPY		www.fciconnect.com	
ltr	ecn no	dr	date	linear	.X ±.38		projection	title		code	
					.XX ±.25			PCI-E 200P CARD EDGE GEN3			
					.XXX ±.10						
				angles	0° ±2°			product family		sheet	
		dr	STONE LI	05/27/15	MM			PCI			2 of 4
		engr	STONE LI	05/27/15	scale			A4 10054652			
		chr			N/A		size		dwg no		
		appd	PM ZHENG	05/27/15			A4 10054652		sheet		
sheet index	revision sheet							cage code			
								22526			



← I/O PANEL DIRECTION
PRIMARY (COMPONENT) SIDE



→ I/O PANEL DIRECTION
SECONDARY (SOLDER) SIDE



mat'l. code				tolerances unless otherwise specified				CUSTOMER COPY		www.fciconnect.com	
ltr	ecr	no	dr	date	linear	.X ±.38	projection	title		code	
						.XX ±.25		PCI-E 200P CARD EDGE GEN3		-	
					angles	.XXX ±.10		product family		PCI	
					dr	0° ±2°		size		-	
					engr			A4		-	
					chr		scale	10054652		sheet	
					appd		N/A			3 of 4	
sheet index	revision sheet							cage code		22526	

NOTES:

1. MATERIAL:
 - HOUSING: THERMOPLASTIC WITH GLASS FIBER, UL94V-0, COLOR IN BLACK.
 - CONTACTS: COPPER ALLOY.
2. FINISH:
 - CONTACTS: GOLD PLATING ON CONTACT AREA, 100 μ*MIN. TIN/LEAD OR MATTE TIN (LEAD FREE OPTION) PLATING ON SOLDER TAILS, 50 μ*MIN. NICKEL UNDERPLATING OVER ALL.
 - BOARDLOCKS: 100 μ* TIN/LEAD OR MATTE TIN (LEAD FREE OPTION) PLATING ON SOLDER TAILS, 50 μ*MIN. NICKEL UNDERPLATING OVER ALL.
3. DURABILITY: 50 CYCLES.
4. RoHS COMPATIBLE PRODUCT SPECIFICATIONS
 - a. PLATING: "LF" MEANS THE PRODUCT IS LEAD FREE, 2.5μm min. MATTE PURE TIN OVER 1.27μm MIN. NICKEL UNDERPLATE.
 - b. MANUFACTURING PROCESS COMPATIBILITY: THE HOUSING WILL WITHSTAND EXPOSURE TO 260C*±5C* SOLDER BATH TEMPERATURE FOR 5 SECONDS IN A WAVE SOLDER APPLICATION WITH A 1.60MM THICK CIRCUIT BOARD.

PRODUCT NUMBER CODE
10054652 - X X X X X X LF

HOUSING COLOR OPTIONS
1-BLACK

PEGS OPTIONS
0-PLASTIC PEGS

TERMINAL PLATING OPTIONS
 0-50μ* Ni UNDERPLATE
 30μ* Au CONTACT AREA
 100μ* TIN TAIL AREA -----COMPATIBLE RoHS
 1-50μ* Ni UNDERPLATE
 15μ* Au CONTACT AREA
 100μ* TIN TAIL AREA -----COMPATIBLE RoHS
 2-50μ* Ni UNDERPLATE
 GOLD FLASH CONTACT AREA
 100μ* TIN TAIL AREA -----COMPATIBLE RoHS



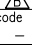
LEAD FREE

PACKAGING OPTIONS
T-TRAY PACKAGING

RESERVE
0

TAIL LENGTH OPTIONS

	DIM "D"	SUGGESTED PCB THICKNESS
1	3.10	2.36±0.10
2	2.54	1.56±0.10

mat'l. code				tolerances unless otherwise specified		CUSTOMER COPY		 www.fciconnect.com	
ltr	ecn no	dr	date	linear	.X ±.38	projection	title		code
					.XX ±.25		PCI-E 200P CARD EDGE GEN3		
				angles	.XXX ±.10		product family	PCI	
				dr	0° ±2°	size	dwg no		sheet
				enrg		scale			4 of 4
				chr	STONE LI 05/27/15	MM	A4	10054652	
				appd	STONE LI 05/27/15	N/A			
sheet index	revision sheet			appd	PM ZHENG 05/27/15				