

Excellent Integrated System Limited

Stocking Distributor

Click to view price, real time Inventory, Delivery & Lifecycle Information:

[FCI](#)
[D09S24B6RV22LF](#)

For any questions, you can email us directly:

sales@integrated-circuit.com

Series **D xx S 24B 6 xx 22 LF**

Number of contacts
09 , 15 , 25 , 37

Contacts
S : Socket

Plating
6 : 500 Mating / Unmating Mini

Packaging specification

Tape and Reel For connector with cap

See Note RoHS

Termination

Code	Type	Foot Print/Pitch	Length of termination	PCB thickness
24B	Straight version	6 / 2.84mm	2.90	2.4

NOTE RoHS INFORMATION

- The "LF" product meet european union Directives and other country regulations asdescribed in GS-22-008.
- The housing will withstand exposure to 260° peak temperature for 30 seconds in a convection , infra-red or vapor reflow oven. See application notes/procedures if are available.
- Termination plating spec:1.27µ Nickel mini,2.5 to 7.5µ Sn(pure mate)
- Shell plating : Nickel bright
- Accessories : Sn pure bright
- Packaging spec ; See GS-14-920

Mounting Options

RL	Insert M3
RV	Female Screw UNC 4-40
RX	Insert UNC 4-40

Product Specification

see : GS-12-372

Packaging Specification

See GS-14-1052

rev	ecn no	dr	YY/MM/DD
I	CREATED	HLE	22/08/06
A	LS06-0223	PCR	2006/12/21
B	LS08-0112	HLE	2008-04-21
C	LS08-0116	HLE	2008-04-24
D	110-0197	NG	2010-10-14
-	-	-	-
-	-	-	-

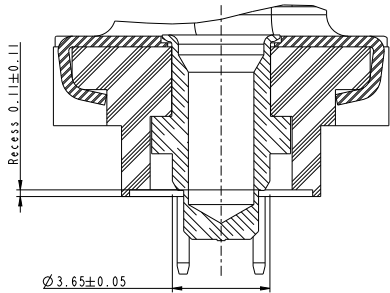
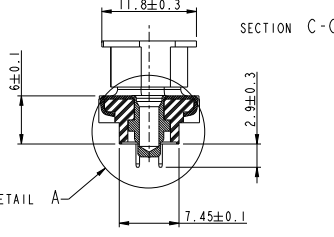
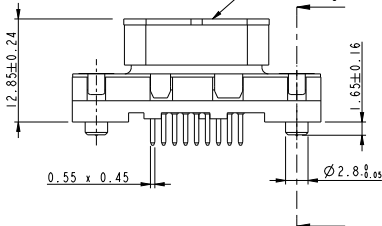
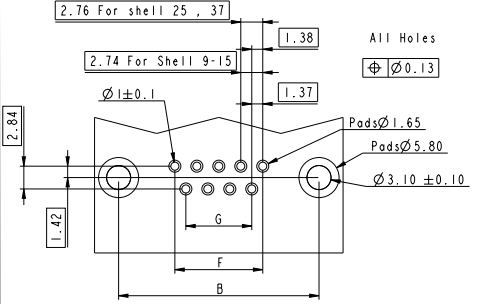
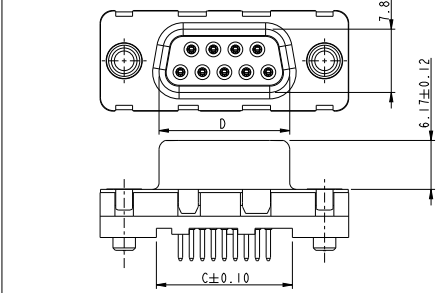
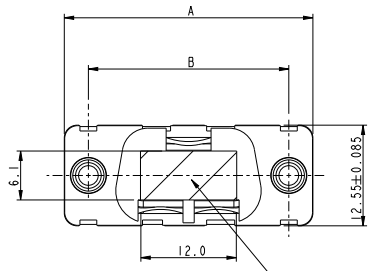
www.fciconnect.com		surface ISO 1302	tolerance std ISO 406 ISO 1101	projection mm
		TOLERANCES UNLESS OTHERWISE SPECIFIED		
Dr	P. CRON	22/08/06	ANGULAR	0.X ±0.3
Eng	H. LEGALLIC	22/08/06	LINEAR	0.XX ±0.1
Chr	NIRMAL G	2010-10-14	0° ±2°	0.XXX ±0.05
Appr	SUDHIR V	2010-10-14	Product family	size A3 Scale 2:1
				ECN 110-0197
FCI SUB DELTA D PIP FEMALE H=2.9				Spec ref -
straight for tape and reel packaging				eng no C01-8646-0888
catalog no SEE TABLE				Rev. D
			CUSTOMER	sheet 1 of 2

With CAP

Without CAP

PCB Card Drilling dimensions and Pads recommended
(after plating - Thickness : 240 μm)

A
B
C
D
E
F

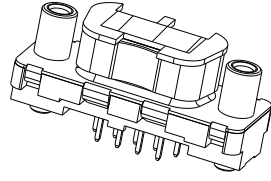
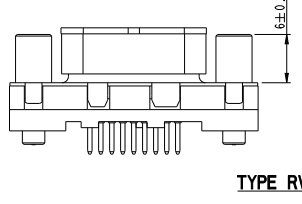
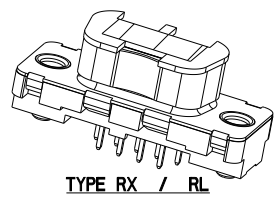


TRUE POSITIONING : $\text{M} \text{ } \phi 0.36$

DETAIL A
SCALE 10:1

SHELL	P/N LEAD FREE	A ±0.38	B ±0.10	C ±0.10	D +0.25 0	F	G
09	D09S04B6xx22LF	30.81	24.99	16.96	16.21	10.96	8.22
15	D15S04B6xx22LF	39.14	33.32	25.18	24.54	19.18	16.44
25	D25S04B6xx22LF	53.03	47.04	39.12	38.25	33.12	30.36
37	D37S04B6xx22LF	69.32	63.50	55.68	54.71	49.68	46.92

Accessories details



www.fciconnect.com	surface 150 1302	tolerance std 150 486 150 1101	projection mm
Dr. P. CRON 22/08/06	ANGULAR	0.1 ±0.3	size
Eng. H. LEGALLIC 22/08/06	LINEAR	0.2 ±0.1	Scale
Chr. NIRMAL G 2010-10-14	0.1 ±0.2	±0.45	ECM 110-0197
Appr. SUDHIR V 2010-10-14	Product family	-	Spec ref
FCI	SUB DELTA D PIP FEMALE H=2	0.1 ±0.2	C01-8646-0888
catalog no	SEE TABLE	CUSTOMER	sheet 2 of 2