

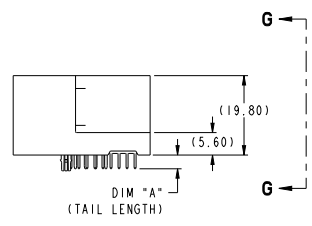
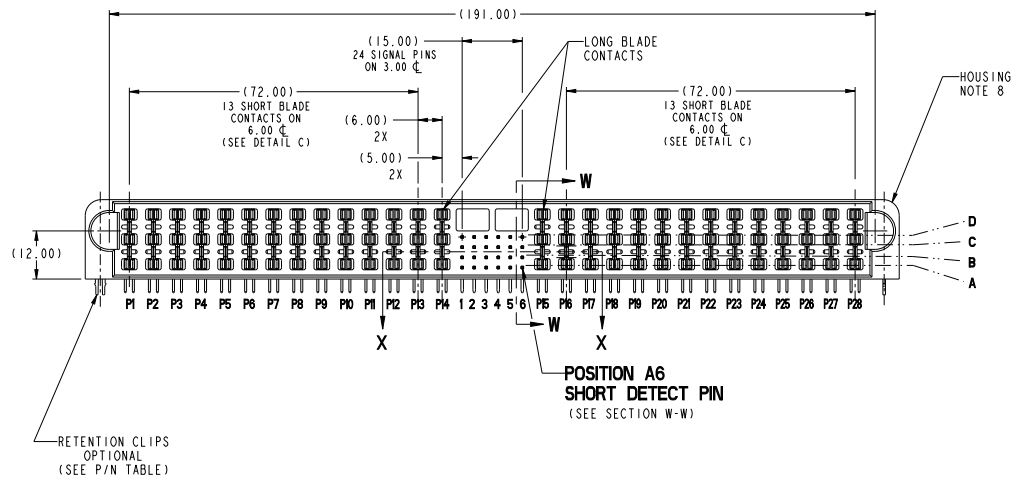
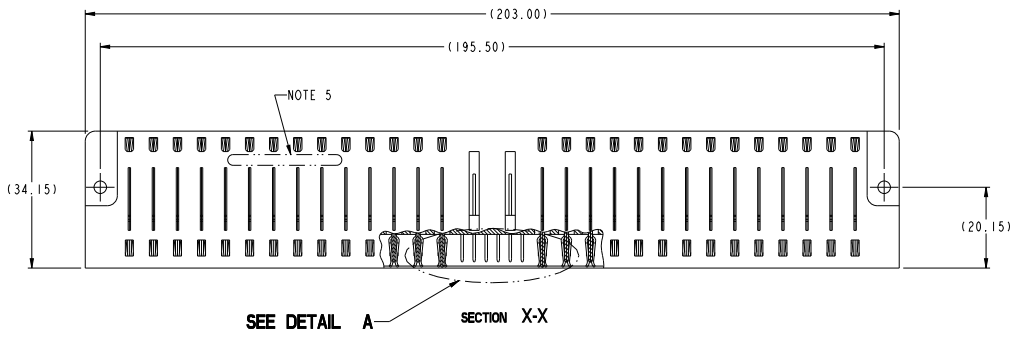
Excellent Integrated System Limited

Stocking Distributor

Click to view price, real time Inventory, Delivery & Lifecycle Information:

[FCI](#)
[10084757-001LF](#)

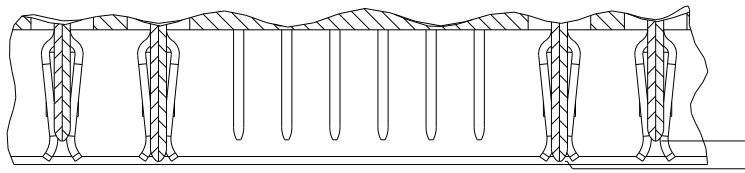
For any questions, you can email us directly:
sales@integrated-circuit.com



Copyright FCI

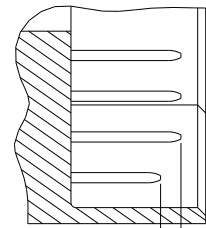
spec ref	-	dr	Wenfang Duan	approval	projection	MM	size	A2	scale	3:1
tolerance std	ASME Y14.5	eng	Wenfang Duan	approval	product family	HCI	rel level	Released	rev	B
surface	linear	0.1	±0.5	FCI	R/A HDR I4DC+24S+I4DC	10084757				
		0.2X	±0.25	www.fci.com	HCI POWER CONNECTOR					
		0.3X	±0.10							
ASME Y14.5	angular	0°	±2°							

PDS: Rev : B STATUS: Released Printed: Dec 30, 2014

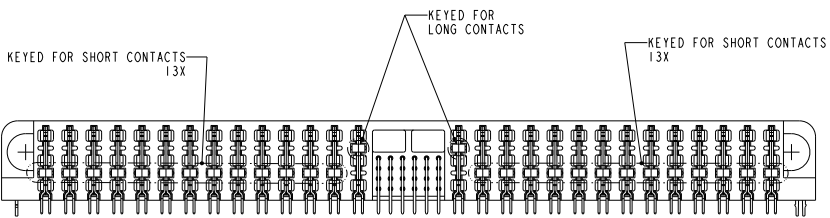


DETAIL A
SCALE 6:1
POWER MATING SEQUENCE

(1.27)
SHORT/LONG
MATING SEQUENCE



SECTION W-W
SCALE 6:1
SIGNAL MATING SEQUENCE



KEYED FOR SHORT CONTACTS
13X

KEYED FOR
LONG CONTACTS

KEYED FOR SHORT CONTACTS
13X

VIEW G-G

dr: WenHua.Du	designed	projection	MM	size	A2	scale	3:1
eng: WenHua	checked	①	←	acc no		rel level	Released
chr:		product family	HCI				
appr: WenHua	approved	product family		HCI	rel level	Released	
FCI	R/A HDR I4DC+24S+I4DC	no	deg	10084757	rev	B	
www.fci.com	HCI POWER CONNECTOR	cat. no.		Product - Customer Draw	sheet 2 of 5		

PDS: Rev : B

STATUS: Released

Printed: Dec 30, 2014

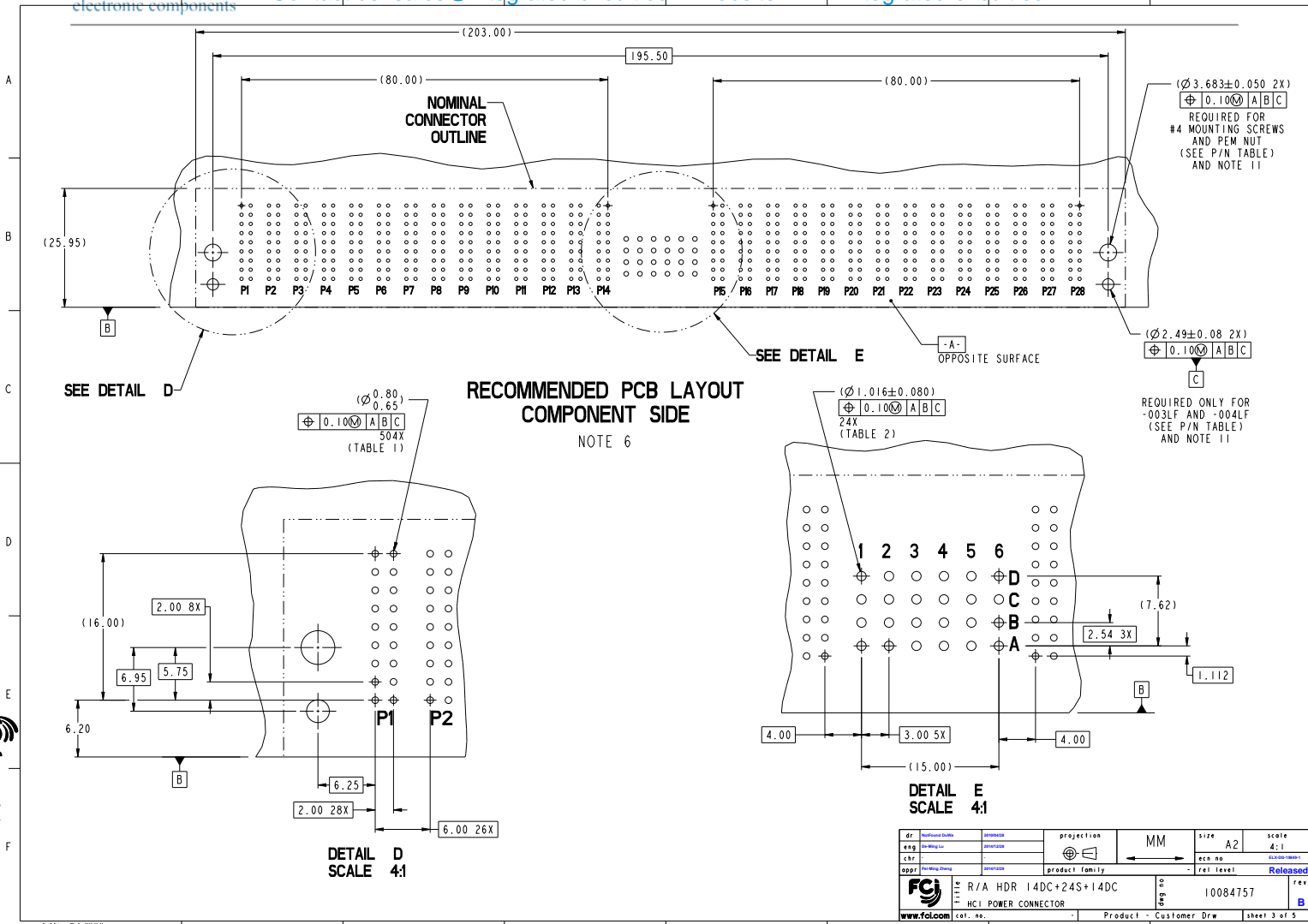
2

3

4

5

Copyright FCI



dr:	Wenfang Duan	approval:		projection:	MM	size:	A2	scale:	4:1
eng:	Wenfang Duan	checked:		①		acc. no.:		rel. level:	Released
chr:						product family:			
appr:	Wenfang Duan	approved:							
FCI		R/A HDR I4DC+24S+I4DC		www.fci.com		10084757		rev B	
www.fci.com		cat. no.		Product		Customer Draw		sheet 3 of 5	

PDS: Rev :B

STATUS: Released

Printed: Dec 30, 2014

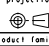

A
B
C
D
E
F

A
B
C
D
E
F

TOP LAYER DESCRIPTION	TABLE 1 (HCI POWER) PLATED THROUGH-HOLE REQUIREMENTS							
	DRILLED HOLE DIAMETER	COPPER THICKNESS	TIN-LEAD THICKNESS	NICKEL THICKNESS	GOLD THICKNESS	TIN THICKNESS	SILVER THICKNESS	FINISHED HOLE DIAMETER
TIN-LEAD	0.81-0.86 (0.85 DRILL)	0.025 - 0.050	0.005 - 0.015	--	--	--	--	0.65 - 0.80
IMMERSION TIN	0.81-0.86 (0.85 DRILL)	0.025 - 0.050	--	--	--	0.9 - 1.5um	--	0.70 - 0.80
IMMERSION SILVER	0.81-0.86 (0.85 DRILL)	0.025 - 0.050	--	--	--	--	0.15 - 0.65um	0.70 - 0.80
COPPER (SEE NOTE 9)	0.81-0.86 (0.85 DRILL)	0.025 - 0.050	--	--	--	--	--	0.70 - 0.80
GOLD	0.81-0.86 (0.85 DRILL)	0.025 - 0.050	--	0.003 - 0.007	FLASH UP TO 0.0002	--	--	0.69 - 0.80

TOP LAYER DESCRIPTION	TABLE 2 (HPC SIGNALS) PLATED THROUGH-HOLE REQUIREMENTS							
	DRILLED HOLE DIAMETER	COPPER THICKNESS	TIN-LEAD THICKNESS	NICKEL THICKNESS	GOLD THICKNESS	TIN THICKNESS	SILVER THICKNESS	FINISHED HOLE DIAMETER
TIN-LEAD	1.125-1.175 ($\varnothing .0453 \pm .0010$)	0.025-0.050	0.005-0.015	--	--	--	--	0.94 - 1.10 ($\varnothing .040 \pm .003$)
IMMERSION TIN			--	--	--	--	--	
IMMERSION SILVER			--	--	--	--	--	
COPPER (SEE NOTE 9)			--	--	--	--	--	
GOLD			--	--	--	--	--	

Copyright FCI

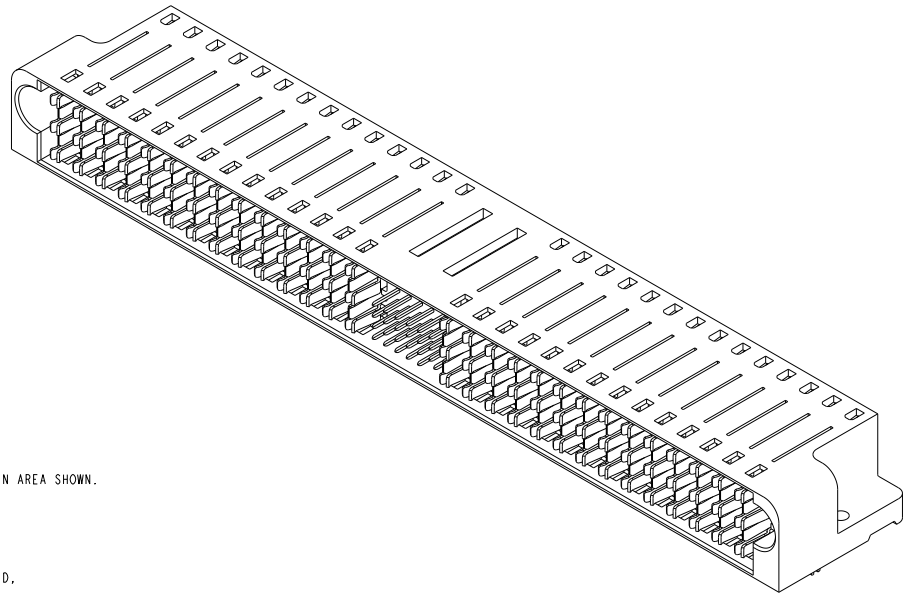
dr: <small>Richard Smith</small>	designed: <small>amw/000</small>	projection: 	MM	size: A2	scale: 2:1
eng: <small>Richard Smith</small>	checked: <small>amw/000</small>			acc no: <small>10084757-001</small>	rel level: Released
appr: <small>Richard Smith</small>	approved: <small>amw/000</small>	product family: <small>FCI</small>			
		R/A HDR I4DC+24S+I4DC		10084757	rev: B
www.fci.com		HCI POWER CONNECTOR		cat. no.	Product - Customer Draw sheet 4 of 5

PDS: Rev: B

STATUS: Released

Printed: Dec 30, 2014

PART NUMBER	RETENTION CLIPS	#4 SCREW	DIM A (TAIL LENGTH)	TAIL TYPE
10084757-001LF	NO	YES	3.43	SOLDER TAIL
10084757-002LF	NO	YES	4.70	SOLDER TAIL
10084757-003LF	YES	NO	3.43	SOLDER TAIL
10084757-004LF	YES	NO	4.70	SOLDER TAIL



NOTES:

1. CONNECTOR MATERIALS:
HOUSING: HIGH TEMPERATURE THERMOPLASTIC, BLACK
UL 94V-0 COMPLIANT
CONTACTS: HIGH PERFORMANCE COPPER ALLOY
2. CONTACT FINISH (ref GS-12-380 SECTION 5.2)
3. PRODUCT SPECIFICATION: GS-12-380.
4. APPLICATION SPECIFICATION: GS-20-070.
5. PRODUCT MARKING (PRODUCT NUMBER & DATE CODE) ON HOUSING IN AREA SHOWN.
6. MINIMUM NOMINAL PCB THICKNESS: 1.6mm
7. PACKAGING MEETS FCI SPECIFICATION GS-14-1073.
8. HOUSING COMPONENT WILL WITHSTAND EXPOSURE TO 260°C PEAK TEMPERATURE FOR 60 SECONDS IN A CONVECTION, INFRA-RED, OR VAPOR PHASE REFLOW OVEN.
9. COPPER PLATING THICKNESS IN CENTER OF VIA-HOLE CAN BE NO MORE THAN 0.003 LESS THAN OTHER AREAS.
10. ALL HOLE SIZES ARE FINISHED HOLE SIZES.
11. MOUNTING HOLES ARE UNPLATED.

dr: Yi-Hsiang Shiao	designed by: shiao	projection	MM	size	A2	scale	3:1
eng: Yi-Hsiang Shiao	checked by: shiao			acc no		rel level	Released
appr: Yi-Hsiang Shiao	approved by: shiao	product family	HCI	rel level			Released
	R/A HDR I4DC+24S+I4DC	part no	10084757	rev			B
www.fci.com	HCI POWER CONNECTOR	cat. no.		Product	Customer Draw		sheet 5 of 5

PDS: Rev: B

STATUS: Released

Printed: Dec 30, 2014

Copyright FCI