

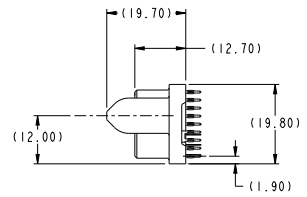
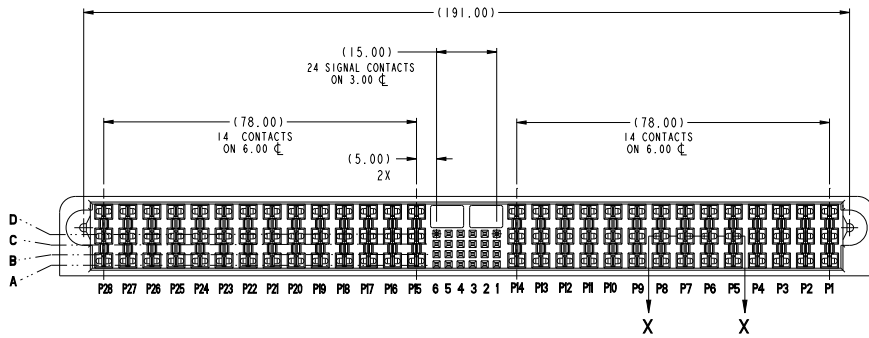
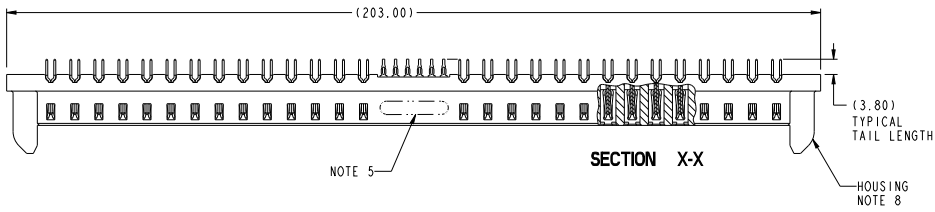
## Excellent Integrated System Limited

Stocking Distributor

Click to view price, real time Inventory, Delivery & Lifecycle Information:

[FCI](#)  
[10084759-001LF](#)

For any questions, you can email us directly:  
[sales@integrated-circuit.com](mailto:sales@integrated-circuit.com)



Copyright FCI

spec ref	-	dr	Jeffrey Doherty	revision	000000	projection	MM	size	A2	scale	1:1
tolerance std	ASME Y14.5	eng	Jeffrey Doherty	checked		product family	HCI	acc no	10084759	rel level	Released
TOLERANCES UNLESS OTHERWISE SPECIFIED		chr	Jeffrey Doherty	approved		product family		HCI		rel level	Released
surface	linear	0.1	±0.5	FCI	VERT RECPT 14DC+24S+14DC	product family		HCI		rel level	Released
	linear	0.2X	±0.25	www.fci.com	HCI POWER CONNECTOR	product family		HCI		rel level	Released
	angular	0.1X	±0.10			product family		HCI		rel level	Released
	angular	0°	±2°			product family		HCI		rel level	Released

PDS: Rev: B

STATUS: Released

Printed: Dec 30, 2014

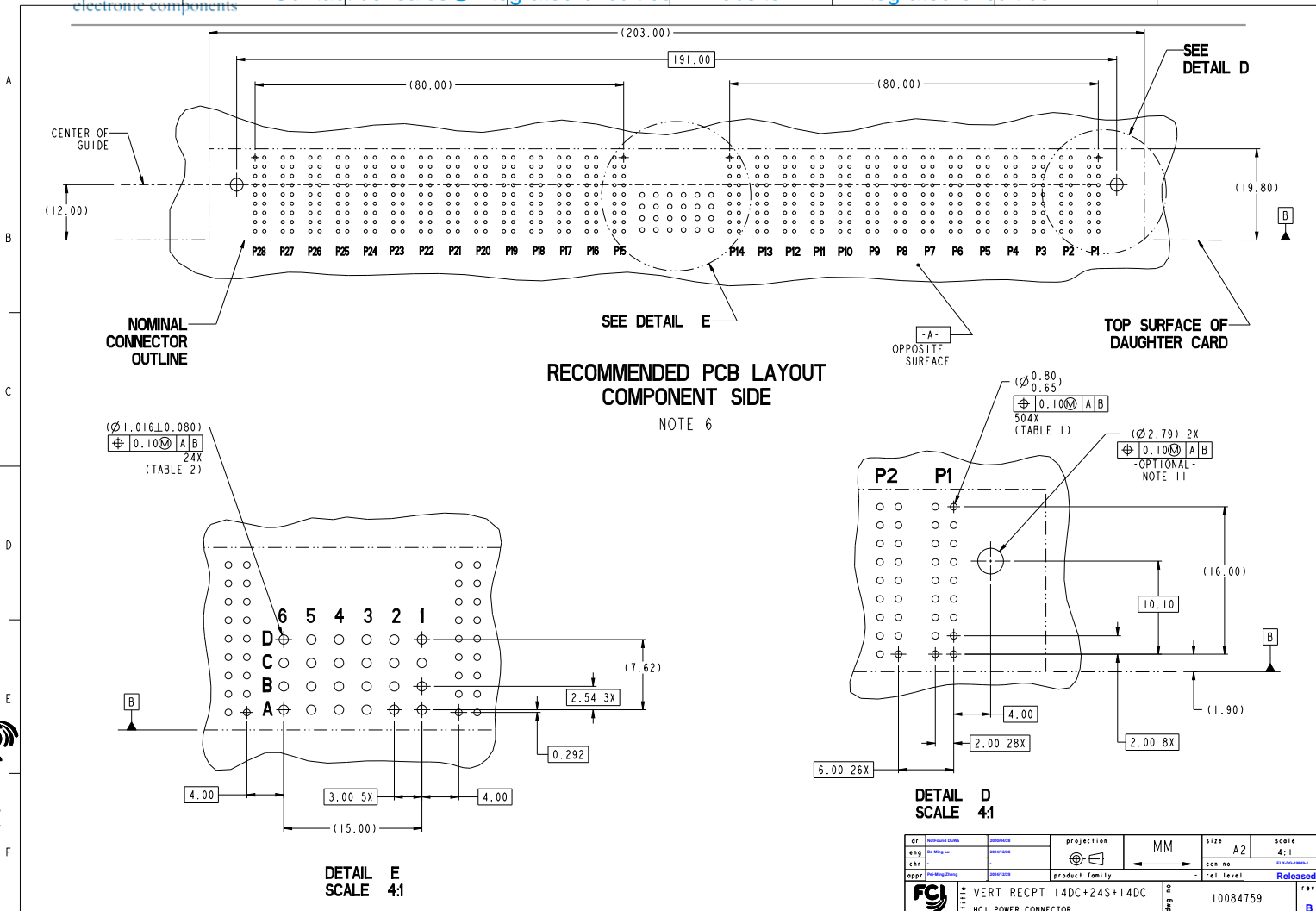
2

3

4

5

F



dr:	Yongfeng Zhang	projection:	MM	size:	A2	scale:	4:1
eng:	Yongfeng Zhang	product family:		acc no:		rel level:	Released
chk:		product:	VERT RECPT 14DC+24S+14DC	part no:	10084759	rev:	B
appr:	Yongfeng Zhang	product family:	HCI POWER CONNECTOR	cat. no:		Product:	Customer Draw
www.fci.com						sheet 2 of 4	

PDS: Rev: B

STATUS: Released

Printed: Dec 30, 2014

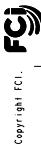
Copyright FCI

A  
B  
C  
D  
E  
F

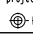

A  
B  
C  
D  
E  
F

TOP LAYER DESCRIPTION	TABLE 1 (HCI POWER) PLATED THROUGH-HOLE REQUIREMENTS							
	DRILLED HOLE DIAMETER	COPPER THICKNESS	TIN-LEAD THICKNESS	NICKEL THICKNESS	GOLD THICKNESS	TIN THICKNESS	SILVER THICKNESS	FINISHED HOLE DIAMETER
TIN-LEAD	0.81-0.86 (0.85 DRILL)	0.025 - 0.050	0.005 - 0.015	--	--	--	--	0.65 - 0.80
IMMERSION TIN	0.81-0.86 (0.85 DRILL)	0.025 - 0.050	--	--	--	0.9 - 1.5um	--	0.70 - 0.80
IMMERSION SILVER	0.81-0.86 (0.85 DRILL)	0.025 - 0.050	--	--	--	--	0.15 - 0.65um	0.70 - 0.80
COPPER (SEE NOTE 9)	0.81-0.86 (0.85 DRILL)	0.025 - 0.050	--	--	--	--	--	0.70 - 0.80
GOLD	0.81-0.86 (0.85 DRILL)	0.025 - 0.050	--	0.003 - 0.007	FLASH UP TO 0.0002	--	--	0.69 - 0.80

TOP LAYER DESCRIPTION	TABLE 2 (HPC SIGNALS) PLATED THROUGH-HOLE REQUIREMENTS							
	DRILLED HOLE DIAMETER	COPPER THICKNESS	TIN-LEAD THICKNESS	NICKEL THICKNESS	GOLD THICKNESS	TIN THICKNESS	SILVER THICKNESS	FINISHED HOLE DIAMETER
TIN-LEAD	1.125-1.175 ( $\varnothing .0453 \pm .0010$ )	0.025-0.050	0.005-0.015	--	--	--	--	0.94 - 1.10 ( $\varnothing .040 \pm .003$ )
IMMERSION TIN			--	--	--	--	--	
IMMERSION SILVER			--	--	--	--	--	
COPPER (SEE NOTE 9)			--	--	--	--	--	
GOLD			--	--	--	--	--	



Copyright FCI

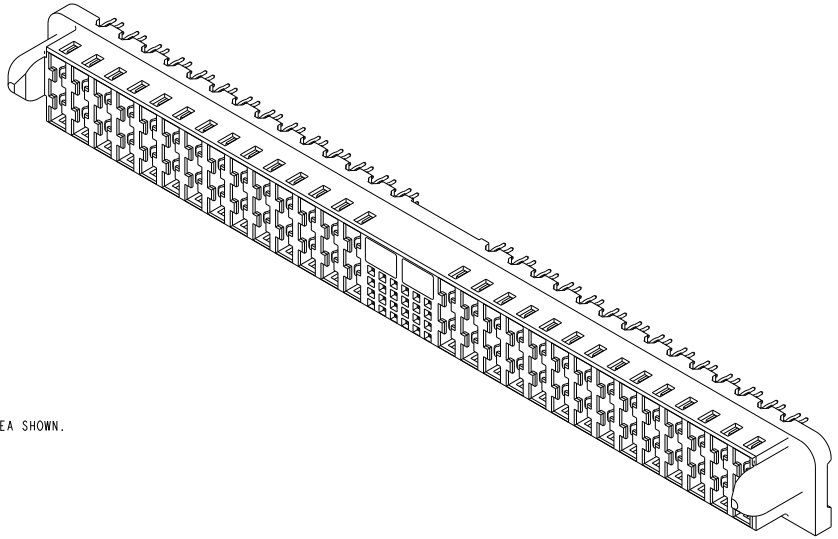
dr: <a href="#">Yi-Hsiang Shiao</a>	designed	projection	MM	size	A2	scale	1:1
eng: <a href="#">Yi-Hsiang Shiao</a>	checked			acc no		rel level	Released
appr: <a href="#">Yi-Hsiang Shiao</a>	approved	product family					
		VERT RECPT 14DC+24S+14DC HCI POWER CONNECTOR		10084759		rev B	
www.fci.com		cat. no.		Product - Customer Draw		sheet 3 of 4	

PDS: Rev: B

STATUS: Released

Printed: Dec 30, 2014

PART NUMBER	M2.5 SCREW NOTE 11	TAIL PLATING	TAIL TYPE
10084759-001	OPTIONAL	SnPb	PRESS-FIT
10084759-001LF	OPTIONAL	Sn	PRESS-FIT



NOTES:

1. CONNECTOR MATERIALS:  
HOUSING: HIGH TEMPERATURE THERMOPLASTIC, BLACK  
UL 94V-0 COMPLIANT  
CONTACTS: HIGH PERFORMANCE COPPER ALLOY
2. CONTACT FINISH (ref GS-12-380 SECTION 5.2)
3. PRODUCT SPECIFICATION: GS-12-380.
4. APPLICATION SPECIFICATION: GS-20-070.
5. PRODUCT MARKING (PRODUCT NUMBER & DATE CODE) ON HOUSING IN AREA SHOWN.
6. MINIMUM NOMINAL PCB THICKNESS: 1.6mm
7. PACKAGING MEETS FCI SPECIFICATION GS-14-1073.
8. HOUSING COMPONENT WILL WITHSTAND EXPOSURE TO 260°C PEAK TEMPERATURE FOR 60 SECONDS IN A CONVECTION, INFRA-RED, OR VAPOR PHASE REFLOW OVEN.
9. COPPER PLATING THICKNESS IN CENTER OF VIA-HOLE CAN BE NO MORE THAN 0.003 LESS THAN OTHER AREAS.
10. ALL HOLE SIZES ARE FINISHED HOLE SIZES.
11. RECOMMENDED RETENTION TO PCB:  
Ø0.110[2.79] THRU HOLE (UNPLATED) FOR M2.5 SELF THREADING SCREW, MAX HEAD Ø0.177[4.50].  
RECOMMENDED SCREW LENGTH 0.276[7.00] + PCB THICKNESS.  
RECOMMENDED SCREW SEATING TO PCB TORQUE: 2-5 lbf-in (2300-5760 gf-cm).

dr: <a href="#">Jianfeng Duan</a>	designed: <a href="#">Jianfeng Duan</a>	projection:	MM	size: A2	scale: 3:1
eng: <a href="#">Jianfeng Duan</a>	checked: <a href="#">Jianfeng Duan</a>			acc no:	10084759-001
chr: <a href="#">Jianfeng Duan</a>	approved: <a href="#">Jianfeng Duan</a>	product family: HCI	rel level: Released		
oppr: <a href="#">Jianfeng Duan</a>	approved: <a href="#">Jianfeng Duan</a>			rev: B	
		VERT RECPT 14DC+24S+14DC HCI POWER CONNECTOR		10084759	
www.fci.com		cat. no.	Product - Customer Draw	sheet 4 of 4	

PDS: Rev: B

STATUS: Released

Printed: Dec 30, 2014

Copyright FCI.