

## Excellent Integrated System Limited

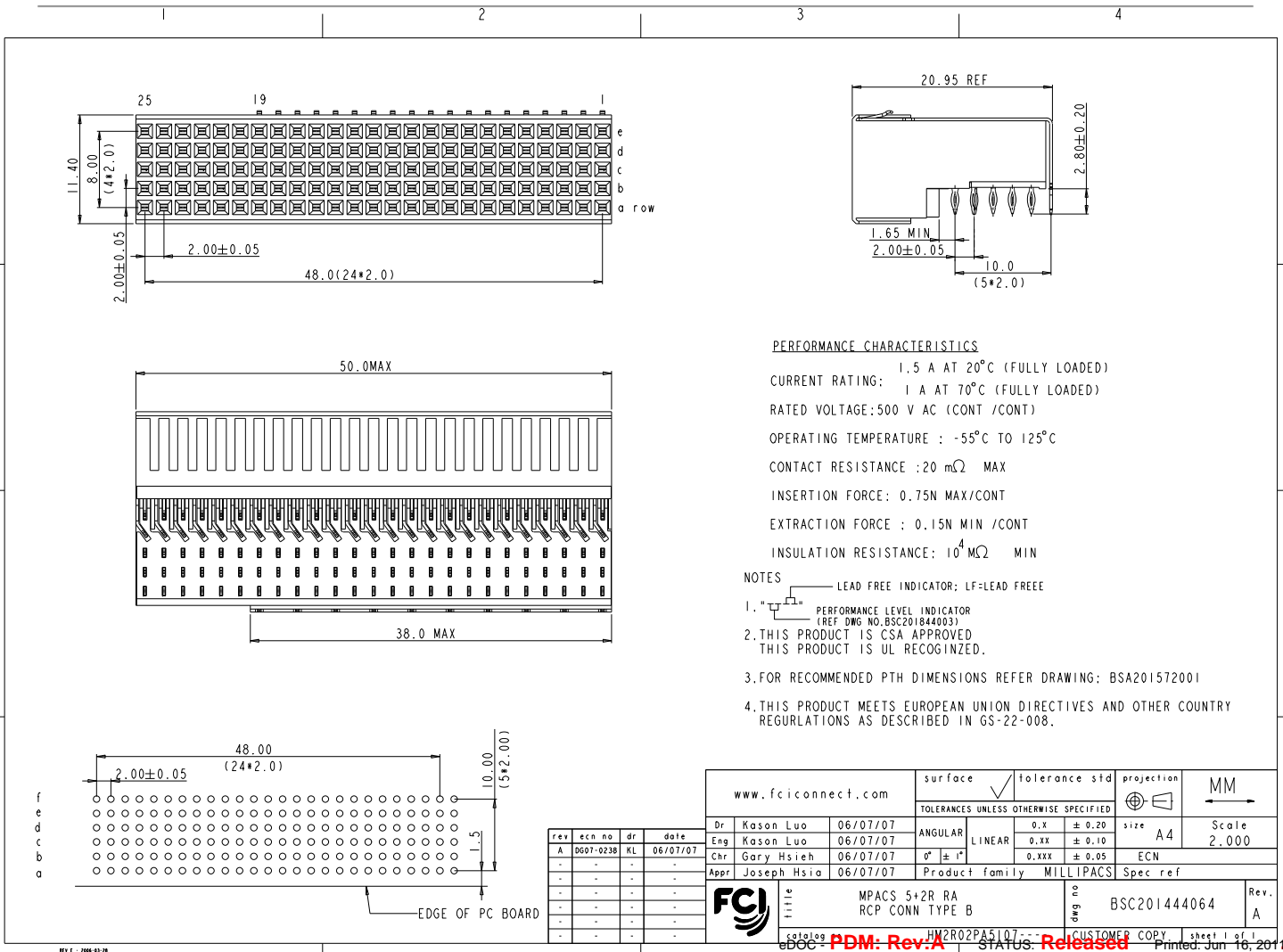
Stocking Distributor

Click to view price, real time Inventory, Delivery & Lifecycle Information:

[FCI](#)  
[HM2R02PA5107N9LF](#)

For any questions, you can email us directly:  
[sales@integrated-circuit.com](mailto:sales@integrated-circuit.com)

Copyright FCI.



**PERFORMANCE CHARACTERISTICS**

- CURRENT RATING: 1.5 A AT 20°C (FULLY LOADED)
- CURRENT RATING: 1 A AT 70°C (FULLY LOADED)
- RATED VOLTAGE: 500 V AC (CONT /CONT)
- OPERATING TEMPERATURE : -55°C TO 125°C
- CONTACT RESISTANCE : 20 mΩ MAX
- INSERTION FORCE: 0.75N MAX/CONT
- EXTRACTION FORCE : 0.15N MIN /CONT
- INSULATION RESISTANCE: 10<sup>4</sup> MΩ MIN

**NOTES**

- 1. "LF" LEAD FREE INDICATOR: LF=LEAD FREE
- 2. THIS PRODUCT IS CSA APPROVED THIS PRODUCT IS UL RECOGNIZED.
- 3. FOR RECOMMENDED PTH DIMENSIONS REFER DRAWING: BSA201572001
- 4. THIS PRODUCT MEETS EUROPEAN UNION DIRECTIVES AND OTHER COUNTRY REGULATIONS AS DESCRIBED IN GS-22-008.

rev	ecm no	dr	date
A	DG07-0238	KL	06/07/07
-	-	-	-
-	-	-	-
-	-	-	-
-	-	-	-

www.fciconnect.com		surface	tolerance std	projection	MM
Dr	Kason Luo	06/07/07	ANGULAR	size A4	Scale 2.000
Eng	Kason Luo	06/07/07	LINEAR	ECN	Spec ref
Chr	Gary Hsieh	06/07/07	Product family	MILLIPACS	
Appr	Joseph Hsia	06/07/07			
Title		MPACS 5+2R RA RCP CONN TYPE B		eng no	BSC201444064
eCatalog		HM2R02PA5107---		Rev.	A
eDOC		PDM: Rev: A		CUSTOMER COPY sheet 1 of 1	