

Excellent Integrated System Limited

Stocking Distributor

Click to view price, real time Inventory, Delivery & Lifecycle Information:

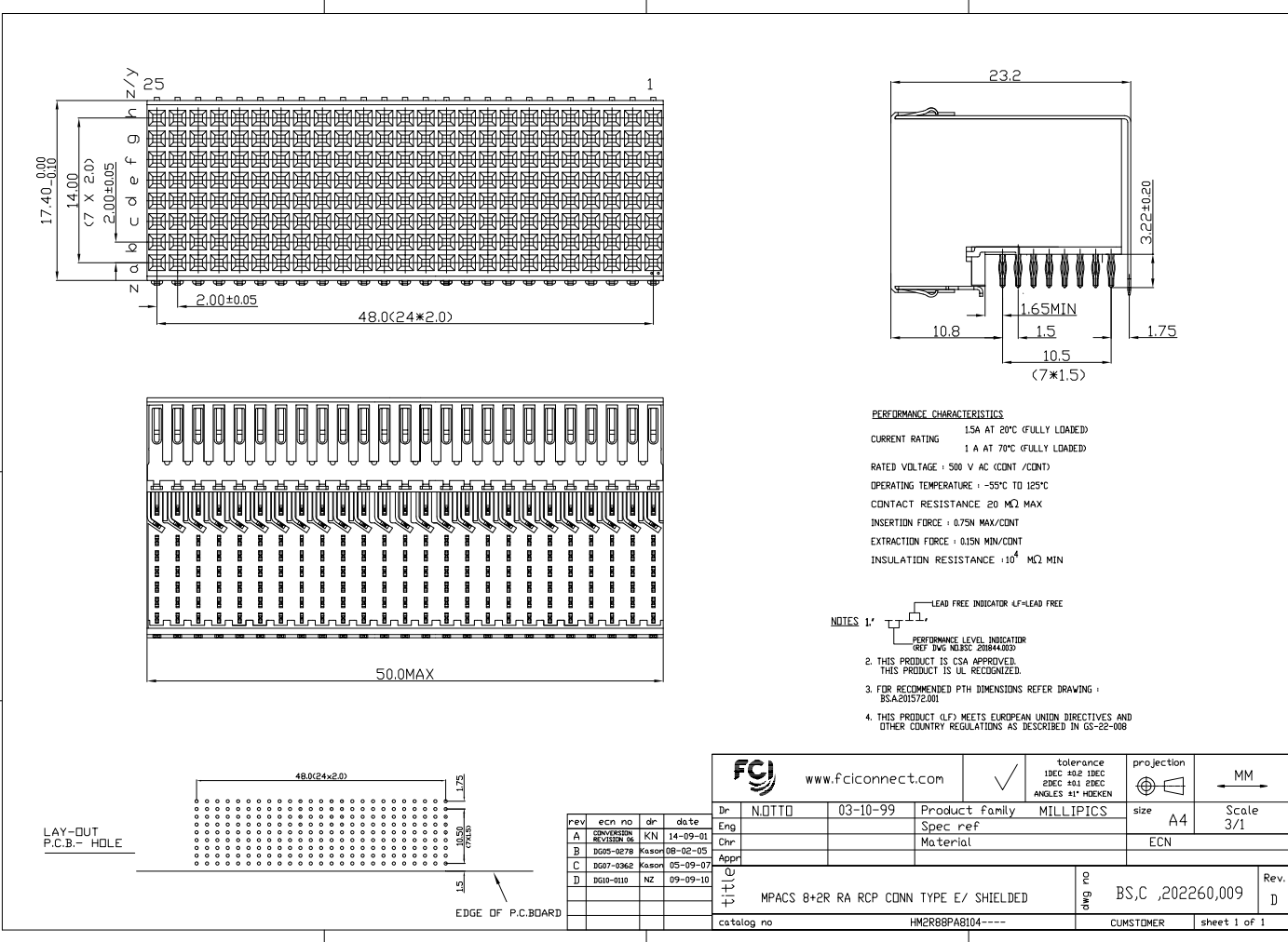
[FCI](#)
[HM2R88PA8104N9LF](#)

For any questions, you can email us directly:
sales@integrated-circuit.com


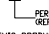
Tous droits strictement réservés. Reproduction ou communication à des tiers interdite sous quelque forme que ce soit sans autorisation écrite du propriétaire. Propriété de c FCI. Droits de reproduction FCI.




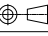
All rights strictly reserved. Reproduction or issue to third parties in any form whatever is not permitted without the authority from the proprietor. Property of FCI. Copyright FCI.



PERFORMANCE CHARACTERISTICS
 CURRENT RATING 1.5A AT 20°C (FULLY LOADED)
 1 A AT 70°C (FULLY LOADED)
 RATED VOLTAGE : 500 V AC (CONT /CONT)
 OPERATING TEMPERATURE : -55°C TO 125°C
 CONTACT RESISTANCE 20 MΩ MAX
 INSERTION FORCE : 0.75N MAX/CONT
 EXTRACTION FORCE : 0.15N MIN/CONT
 INSULATION RESISTANCE : 10⁴ MΩ MIN

- NOTES 1'  LEAD FREE INDICATOR LF-LEAD FREE
-  PERFORMANCE LEVEL INDICATOR REF DWG INDEX 23884-008
- THIS PRODUCT IS CSA APPROVED. THIS PRODUCT IS UL RECOGNIZED.
 - FOR RECOMMENDED PTH DIMENSIONS REFER DRAWING : BSA201572.001
 - THIS PRODUCT (LF) MEETS EUROPEAN UNION DIRECTIVES AND OTHER COUNTRY REGULATIONS AS DESCRIBED IN GS-22-008

rev	ecn no	dr	date
A	03050001	KN	14-09-01
B	DG05-0278	Kason	08-02-05
C	DG07-0362	Kason	05-09-07
D	DG10-0110	NZ	09-09-10

	www.fciconnect.com	<input checked="" type="checkbox"/>	tolerance 1DEC #2 1DEC 2DEC #11 2DEC ANGLES #1 HOEKEN	projection 	MM →
Dr	NDTTO	03-10-99	Product family	MILLIPICS	size
Eng			Spec ref		A4
Chr			Material		Scale
Appr					3/1
ECN					ECN
Part No	MPACS 8+2R RA RCP CONN TYPE E/ SHIELDED			Part No	BS,C ,202260,009
Rev				Rev	D
catalog no	HM2R88PA8104----			CUSTOMER	sheet 1 of 1