

Excellent Integrated System Limited

Stocking Distributor

Click to view price, real time Inventory, Delivery & Lifecycle Information:

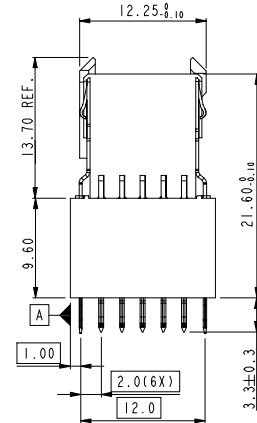
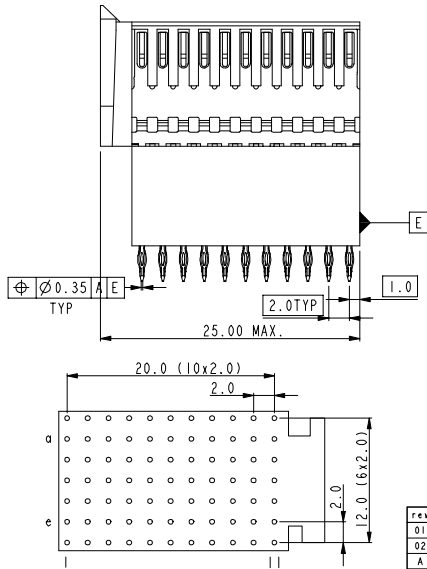
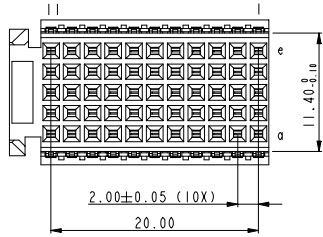
[FCI](#)
[HM2S30PE51N1N9LF](#)

For any questions, you can email us directly:
sales@integrated-circuit.com

PERFORMANCE CHARACTERISTICS

CURRENT RATING: 1.5A AT 20°C (FULLY LOADED)
1 A AT 70°C (FULLY LOADED)
RATED VOLTAGE: 500 V AC (CONT/CONT)
OPERATING TEMPERATURE: -55°C TO 125°C
CONTACT RESISTANCE: 20mΩ MAX.
INSERTION FORCE: 0.75 N MAX / CONT
EXTRACTION FORCE: 0.15 N MIN / CONT
INSULATION RESISTANCE: 10⁴ MΩ MIN

NOTE 1. PERFORMANCE LEVEL INDICATION Z1: PL3
N9: PL2
E9: PL1
NOTE 2. COLUMN 1 OF CONNECTOR SHOULD COINCIDE WITH COLUMN 1 OF PCB.
NOTE 3. RECOMMEND PTH SIZE PLEASE REFER TO DRAWING BSA 201572 001.
NOTE 4. HM2S30PE51N1--LF, "--" INDICATION PERFORMANCE LEVEL.



LAY-OUT
P.C.B. - HOLE
(MOUNTING SIDE)

rev	ecn no	dr	date
01	-	CLU	122506
02	-	CLU	011507
A	DG07-0278	CLU	062807
B	DG10-0110	NZ	2010-9-3
-	-	-	-
-	-	-	-

www.fciconnect.com		surface	tolerance	std	projection	MM
		TOLERANCES UNLESS OTHERWISE SPECIFIED				
Dr	Collins Lu	121106	ANGULAR	LINEAR	0.X ± 0.3	size A4 Scale 1,000
Eng	Collins Lu	121106	"	"	0.XX ± 0.13	ECN DG07-0278
Chr	Beer Fu	121206	"	"	0.XXX ± 0.051	Spec ref
Appr	Joseph Hsia	121206	Product family			
FCI		title		MILLIPACS 2 /TYPE C SHIELDED		dwg no BSC201908001
		Millipacs mezzanine				Rev. B
		catalog no		HM2S30PE51N1--LF		Customer sheet 1 of 1