

Excellent Integrated System Limited

Stocking Distributor

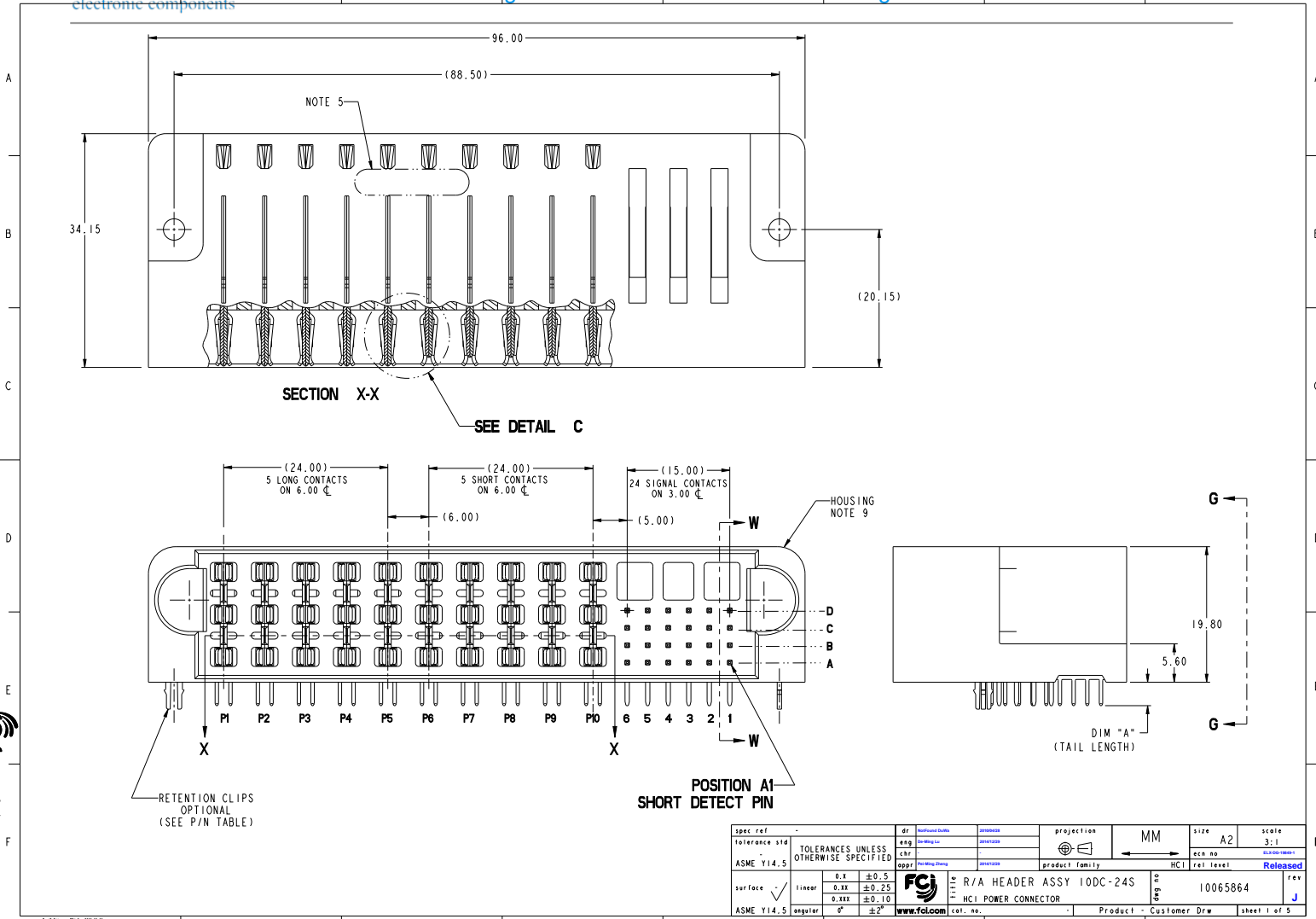
Click to view price, real time Inventory, Delivery & Lifecycle Information:

[FCI](#)

[10065864-001LF](#)

For any questions, you can email us directly:

sales@integrated-circuit.com



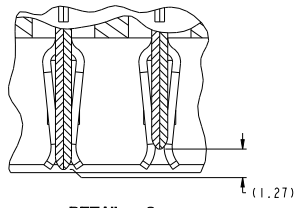
spec ref	dr	projection	MM	size	A2	scale	3:1
tolerance std	ASME Y14.5	TOLERANCES UNLESS OTHERWISE SPECIFIED		acc no		rel level	Released
surface	linear	0.1 ±0.5 0.25 ±0.25 0.25 ±0.10	angular	0° ±2°			
www.fci.com		FCI		R/A HEADER ASSY 10DC-24S		10065864	
www.fci.com		HCL POWER CONNECTOR		Product - Customer Drw		sheet 1 of 5	

PDS: Rev: J

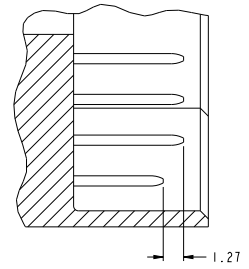
STATUS: Released

Printed: Dec 30, 2014

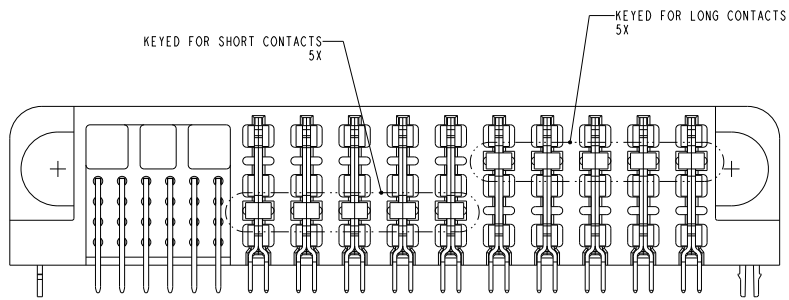
Copyright FCI



DETAIL C
SCALE 6:1
POWER MATING
SEQUENCE



SECTION W-W
SCALE 6:1
SIGNAL MATING
SEQUENCE



VIEW G-G

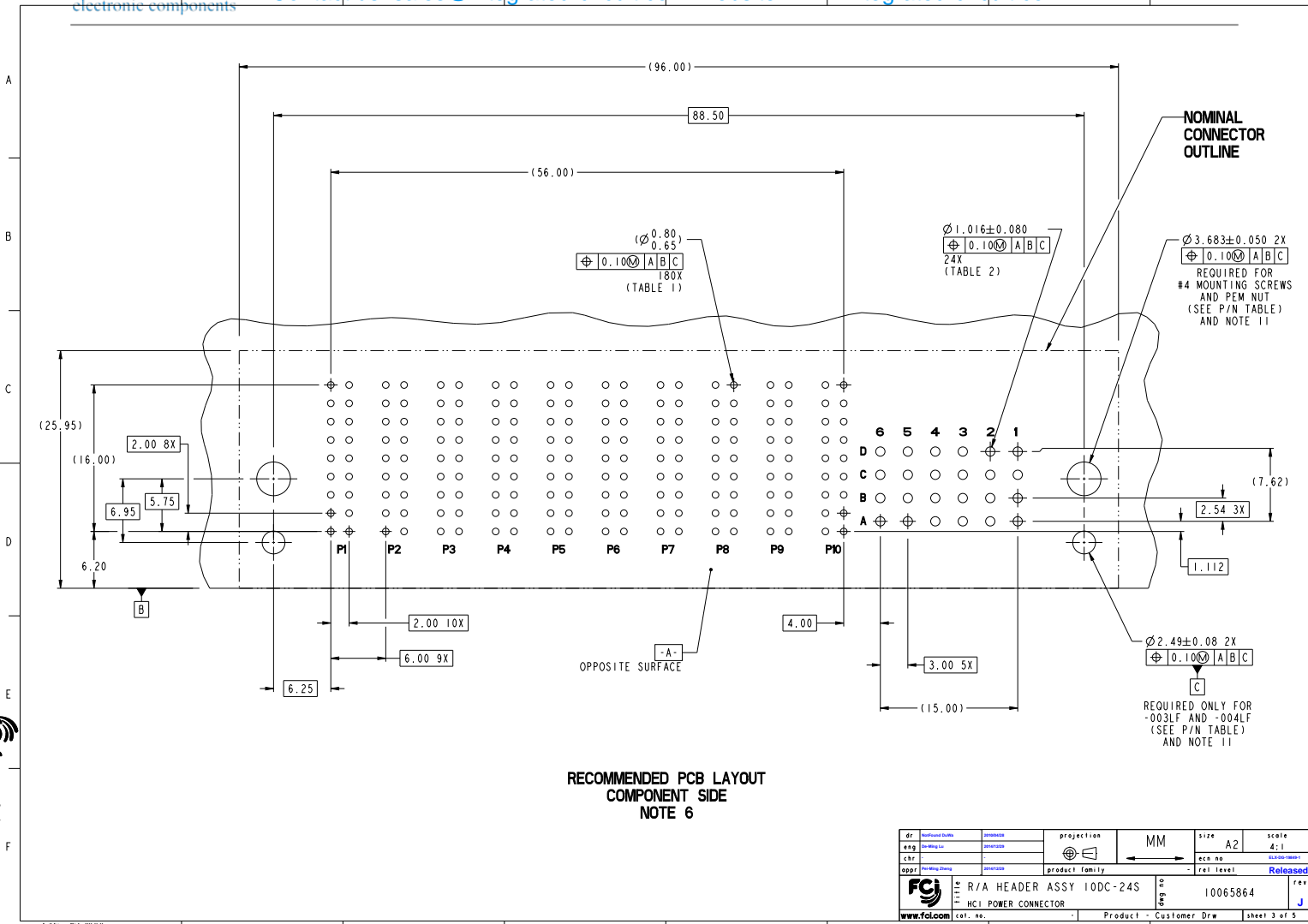
dr: WenHua.Du	designed: JianHua	projection:	MM	size: A2	scale: 3:1
eng: WenHua	checked: JianHua			acc no:	10065864
chr: WenHua	approved: JianHua	product family: HCI	rel level: Released		
appr: WenHua	approved: JianHua				
	R/A HEADER ASSY 10DC-24S	FCI	10065864	rev: J	
www.fci.com	HCI POWER CONNECTOR	cat. no.	Product - Customer Draw	sheet 2 of 5	

PDS: 6 rev: J

STATUS: Released

Printed: Dec 30, 2014

Copyright FCI



**RECOMMENDED PCB LAYOUT
COMPONENT SIDE
NOTE 6**

dr: Yi-Hsiang Shieh	approval: Yi-Hsiang Shieh	projection:	MM	size: A2	scale: 2:1
eng: Yi-Hsiang Shieh	approval: Yi-Hsiang Shieh			acc no:	10065864-001
chr: Yi-Hsiang Shieh	approval: Yi-Hsiang Shieh			rel level:	Released
appr: Yi-Hsiang Shieh	approval: Yi-Hsiang Shieh			rel level:	Released
	R/A HEADER ASSY 10DC-24S		part no:	10065864	rev: J
www.fci.com	HCI POWER CONNECTOR		cat. no.:	Product - Customer Draw	sheet 3 of 5

PDS: 6 rev: J

STATUS: Released

Printed: Dec 30, 2014

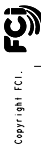
Copyright FCI

A
B
C
D
E
F

A
B
C
D
E
F

TOP LAYER DESCRIPTION	TABLE 1 (HCI POWER) PLATED THROUGH-HOLE REQUIREMENTS							
	DRILLED HOLE DIAMETER	COPPER THICKNESS	TIN-LEAD THICKNESS	NICKEL THICKNESS	GOLD THICKNESS	TIN THICKNESS	SILVER THICKNESS	FINISHED HOLE DIAMETER
TIN-LEAD	0.81-0.86 (0.85 DRILL)	0.025 - 0.050	0.005 - 0.015	--	--	--	--	0.65 - 0.80
IMMERSION TIN	0.81-0.86 (0.85 DRILL)	0.025 - 0.050	--	--	--	0.9 - 1.5um	--	0.70 - 0.80
IMMERSION SILVER	0.81-0.86 (0.85 DRILL)	0.025 - 0.050	--	--	--	--	0.15 - 0.65um	0.70 - 0.80
COPPER (SEE NOTE 9)	0.81-0.86 (0.85 DRILL)	0.025 - 0.050	--	--	--	--	--	0.70 - 0.80
GOLD	0.81-0.86 (0.85 DRILL)	0.025 - 0.050	--	0.003 - 0.007	FLASH UP TO 0.0002	--	--	0.69 - 0.80

TOP LAYER DESCRIPTION	TABLE 2 (HPC SIGNALS) PLATED THROUGH-HOLE REQUIREMENTS							
	DRILLED HOLE DIAMETER	COPPER THICKNESS	TIN-LEAD THICKNESS	NICKEL THICKNESS	GOLD THICKNESS	TIN THICKNESS	SILVER THICKNESS	FINISHED HOLE DIAMETER
TIN-LEAD	1.125-1.175 ($\varnothing .0453 \pm .0010$)	0.025-0.050	0.005-0.015	--	--	--	--	0.94 - 1.10 ($\varnothing .040 \pm .003$)
IMMERSION TIN			--	--	--	--	--	
IMMERSION SILVER			--	--	--	--	--	
COPPER (SEE NOTE 9)			--	--	--	--	--	
GOLD			--	--	--	--	--	



Copyright FCI.

dr: Yi-Hsiang Shiao	designed	projection	MM	size	A2	scale	2:1
eng: Yi-Hsiang Shiao	checked			acc no		rel level	Released
appr: Yi-Hsiang Shiao	approved	product family					
	R/A HEADER ASSY 10DC-24S		10065864	rev	J		
www.fci.com	cat. no.	HCI POWER CONNECTOR		Product - Customer Draw	sheet 4 of 5		

PDS: Rev: J

STATUS: Released

Printed: Dec 30, 2014

10065864-001LF

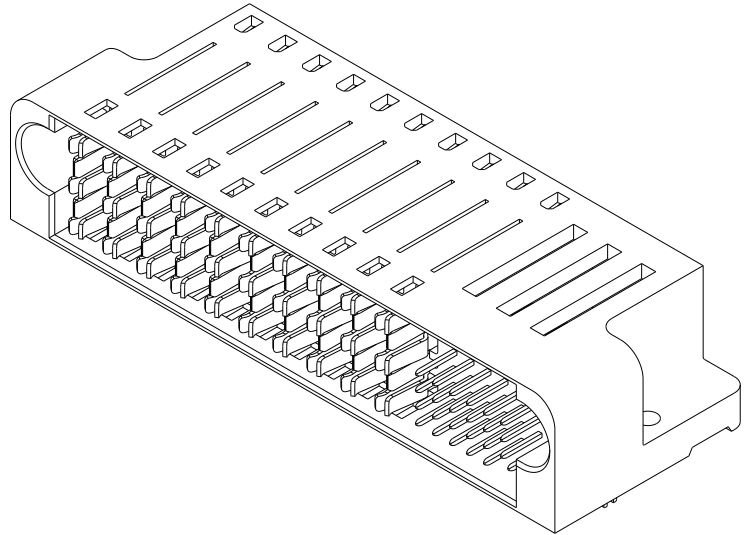
2

3

4

5

PART NUMBER	RETENTION CLIPS	#4 SCREW	DIM A (TAIL LENGTH)	TAIL TYPE
10065864-001LF	NO	YES	3.43	SOLDER TAIL
10065864-002LF	NO	YES	4.70	SOLDER TAIL
10065864-003LF	YES	NO	3.43	SOLDER TAIL
10065864-004LF	YES	NO	4.70	SOLDER TAIL



NOTES:

1. CONNECTOR MATERIALS:
HOUSING: HIGH TEMPERATURE THERMOPLASTIC, BLACK
UL 94V-0 COMPLIANT
CONTACTS: HIGH PERFORMANCE COPPER ALLOY
2. CONTACT FINISH(REF. GS-12-380 SECTION 5.2)
3. PRODUCT SPECIFICATION: GS-12-380.
4. APPLICATION SPECIFICATION: GS-20-070.
5. PRODUCT MARKING (PRODUCT NUMBER & DATE CODE) ON HOUSING IN AREA SHOWN.
6. MINIMUM NOMINAL PCB THICKNESS: 1.6mm
7. PACKAGING MEETS FCI SPECIFICATION GS-14-1073.
8. HOUSING COMPONENT WILL WITHSTAND EXPOSURE TO 260°C PEAK TEMPERATURE FOR 60 SECONDS IN A CONVECTION, INFRA-RED, OR VAPOR PHASE REFLOW OVEN.
9. COPPER PLATING THICKNESS IN CENTER OF VIA-HOLE CAN BE NO MORE THAN 0.003 LESS THAN OTHER AREAS.
10. ALL HOLE SIZES ARE FINISHED HOLE SIZES.
11. MOUNTING HOLES ARE UNPLATED.

dr: Yi-Hsiang Shiao	designed	projection	MM	size	A2	scale	3:1
eng: Yi-Hsiang Shiao	checked	①		acc no		date	2014-08-01
chr: Yi-Hsiang Shiao	approved	product family	HCl	rel level	Released		
appr: Yi-Hsiang Shiao	approved	FCI					
	R/A HEADER ASSY 10DC-24S			part no	10065864	rev	J
www.fci.com	HCl POWER CONNECTOR			cat. no.		Product - Customer Draw	sheet 5 of 5

PDS: Rev: J

STATUS: Released

Printed: Dec 30, 2014

Copyright FCI