

Excellent Integrated System Limited

Stocking Distributor

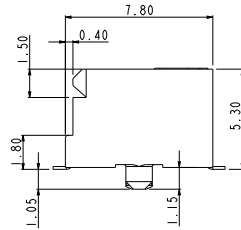
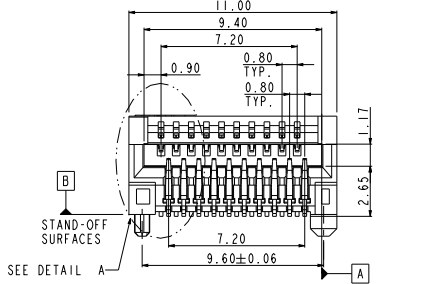
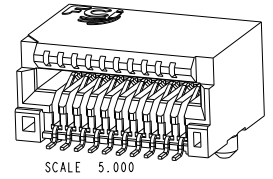
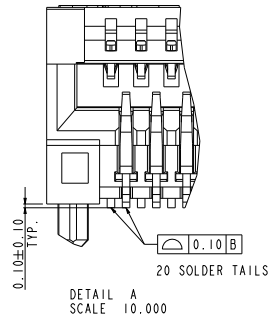
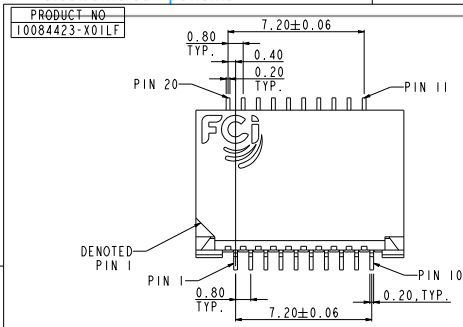
Click to view price, real time Inventory, Delivery & Lifecycle Information:

[FCI](#)

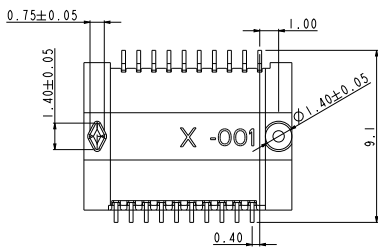
[10084423-101LF](#)

For any questions, you can email us directly:

sales@integrated-circuit.com

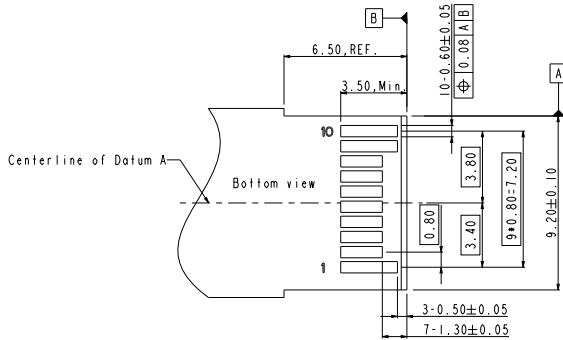
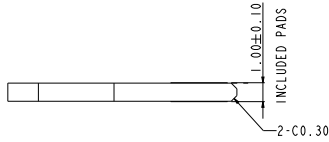
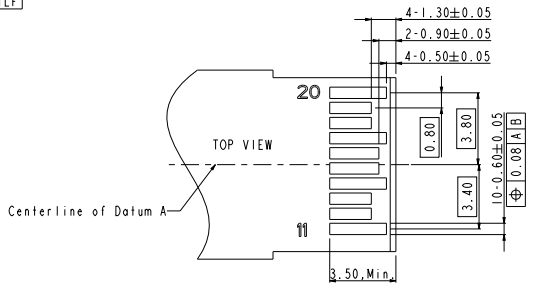


- NOTE:
- Material:
 - HOUSING: HIGH TEMPERATURE LCP, BLACK UL 94 V-0 FLAME RETARDANT.
 - TERMINAL: NICKEL COPPER ALLOY.
 - PLATING SPEC AS BELOW:
 - FOR CONTACT AREA:
 - 101LF FOR 0.76 MICROMETERS MIN. THICKNESS GOLD.
 - 201LF FOR 0.38 MICROMETERS MIN. THICKNESS GOLD.
 - 901LF FOR 0.76 MICROMETERS MIN. THICKNESS GXT.
 - FOR SOLDER AREA:
 - MATTE PURE TIN 3 MICROMETERS MIN.
 - FOR UNDERPLATING:
 - 2.54 MICROMETERS MIN. THICKNESS NICKEL
 - PACKING SPEC. GS-14-1030.
 - PRODUCT SPEC. GS-12-557.
 - PART NUMBER SCHEME: (EX. 10084423-X01LF), PLEASE FIND THE PAGE 2 FOR OPTIONS.
 - LEAD FREE NOTES:
 - 5a. THE HOUSING WILL WITHSTAND EXPOSURE TO 260° C PEAK TEMPERATURE FOR 10 SECONDS IN A CONVECTION, INFRA-RED OR VAPOR PHASE REFLOW OVEN.
 - 5b. THIS PRODUCT MEETS EUROPEAN UNION DIRECTIVES AND OTHER COUNTRY REGULATIONS AS DESCRIBED IN GS-22-008.
 - THIS CONNECTOR IS DESIGNED TO WORK WITH RAIL SYSTEM THAT ALLOW THE MODULE TO "FLOAT" IN THE VERTICAL PLANE AND FIND EQUILIBRIUM BETWEEN THE UPPER AND LOWER CONTACT ROWS. THIS CONNECTOR WILL NOT PERFORM PROPERLY IF USED IN SYSTEMS THAT MECHANICALLY BIAS THE MODULE IN THE VERTICAL PLANE SUCH AS RAIL SYSTEMS WITH EMI SPRINGS.



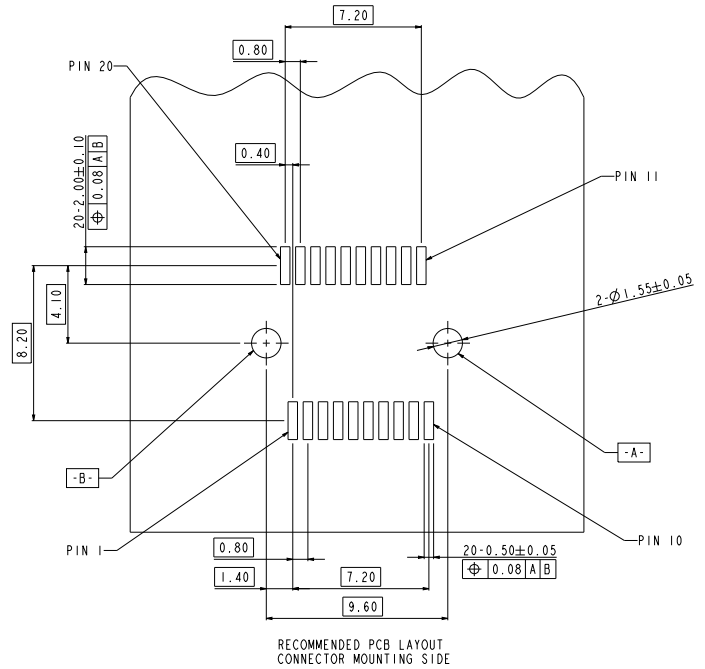
spec ref	*	dr	Junon Huang	20090421	projection	MM	size	A3	scale	5.000
tolerance std	ISO 406	eng	De-Peng Qin	20110902			ecn no	ELX-06-61877-1		
ISO 1101	TOLERANCES UNLESS OTHERWISE SPECIFIED	chr	Terry Qiu	20110902			rel level	Released		
surface	linear	appr	Pai-Ming Zhang	20130326	product family		rev	10084423-101		
ISO 1302	angular	0°	±2°	www.fci.com	cat. no.	*	Product - Customer Drw	sheet 1 of 2		

PRODUCT NO
10084423-X01LF



RECOMMENDED LAYOUT
MATING PCB SIDE

PART NUMBER	TERMINALS (Contact plating options)	TERMINALS (Underplating and Solder tail plating)	REMARK
10084423-101LF	0.76um, Min. Gold	Underplating: 2.54um Min. Nickel overall. Solder tail: 3um Min. Matte Tin.	
10084423-201LF	0.38um, Min. Gold	Underplating: 2.54um Min. Nickel overall. Solder tail: 3um Min. Matte Tin.	
10084423-901LF	0.76um, Min. GXT	Underplating: 2.54um Min. Nickel overall. Solder tail: 3um Min. Matte Tin.	



RECOMMENDED PCB LAYOUT
CONNECTOR MOUNTING SIDE

spec ref	*	dr	Junon Huang	20090421	projection	MM	size	A3	scale	5.000
tolerance std	TOLERANCES UNLESS OTHERWISE SPECIFIED	eng	De-Peng Qin	20120922			ecn no	ELX-06-61877-1	rel level	Released
ISO 406		chr	Terry Qiu	20120926						
ISO 1101		appr	Pai-Ming Zhang	20130326	product family					
surface	linear	0.X	±0.25		ASSEMBLY OF STANDARD TYPE.20 POS RIGHT ANGLE TYPE, EDGE CARD CONNECTOR	cat. no.	Product - Customer Draw	sheet 2 of 2	rev E	
ISO 1302		0.XX	±0.13							
		0.XXX	±0.05							
	angular	0°	±2°	www.fci.com	eng no	10084423-101				