

Excellent Integrated System Limited

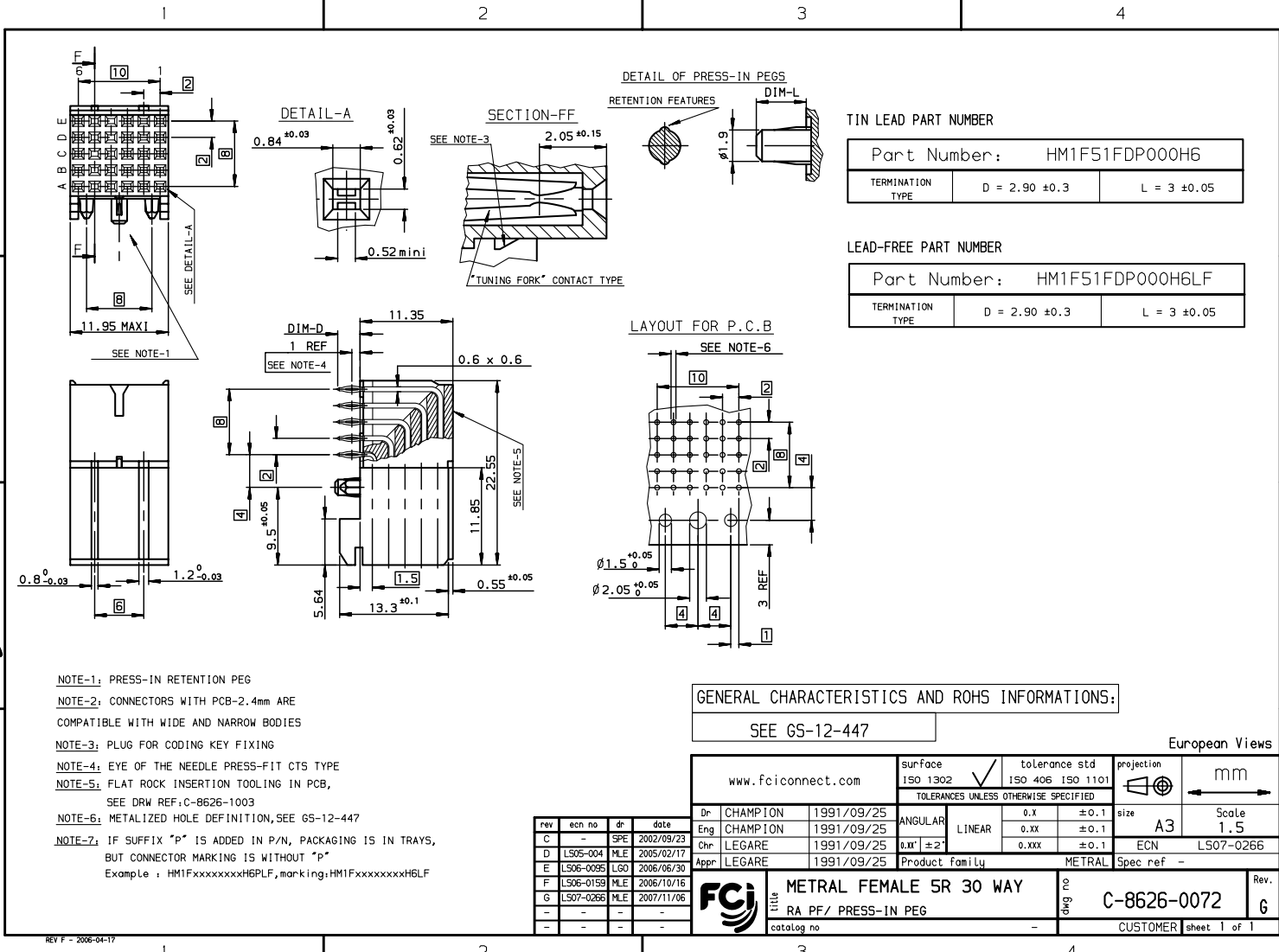
Stocking Distributor

Click to view price, real time Inventory, Delivery & Lifecycle Information:

[FCI](#)
[HM1F51FDP000H6LF](#)

For any questions, you can email us directly:

sales@integrated-circuit.com



TIN LEAD PART NUMBER

Part Number: HM1F51FDP000H6		
TERMINATION TYPE	D = 2.90 ±0.3	L = 3 ±0.05

LEAD-FREE PART NUMBER

Part Number: HM1F51FDP000H6LF		
TERMINATION TYPE	D = 2.90 ±0.3	L = 3 ±0.05

NOTE-1: PRESS-IN RETENTION PEG

NOTE-2: CONNECTORS WITH PCB-2.4mm ARE COMPATIBLE WITH WIDE AND NARROW BODIES

NOTE-3: PLUG FOR CODING KEY FIXING

NOTE-4: EYE OF THE NEEDLE PRESS-FIT CTS TYPE

NOTE-5: FLAT ROCK INSERTION TOOLING IN PCB, SEE DRW REF: C-8626-1003

NOTE-6: METALIZED HOLE DEFINITION, SEE GS-12-447

NOTE-7: IF SUFFIX "P" IS ADDED IN P/N, PACKAGING IS IN TRAYS, BUT CONNECTOR MARKING IS WITHOUT "P"

Example: HM1FxxxxxxxH6PLF, marking: HM1FxxxxxxxH6LF

GENERAL CHARACTERISTICS AND ROHS INFORMATIONS:

SEE GS-12-447

European Views

www.fciconnect.com		surface 150 1302 ✓	tolerance std 150 406 150 1101	projection	mm
TOLERANCES UNLESS OTHERWISE SPECIFIED					
Dr	CHAMPION	1991/09/25	ANGULAR	0.X	±0.1
Eng	CHAMPION	1991/09/25	LINEAR	0.XX	±0.1
Chr	LEGARE	1991/09/25	0.XX	0.XXX	±0.1
Appr	LEGARE	1991/09/25	Product family	METRAL	Spec ref -
METRAL FEMALE SR 30 WAY				size A3	Scale 1.5
RA PF/ PRESS-IN PEG				ECN L507-0266	Rev. 6
catalog no				C-8626-0072	CUSTOMER sheet 1 of 1

rev	ecn no	dr	date
C	-	SPE	2002/09/23
D	LS05-004	MLE	2005/02/17
E	LS06-0035	LGO	2006/06/30
F	LS06-0159	MLE	2006/10/16
G	LS07-0266	MLE	2007/11/06
-	-	-	-
-	-	-	-

Copyright FCI

REV F - 2006-04-17