

Excellent Integrated System Limited

Stocking Distributor

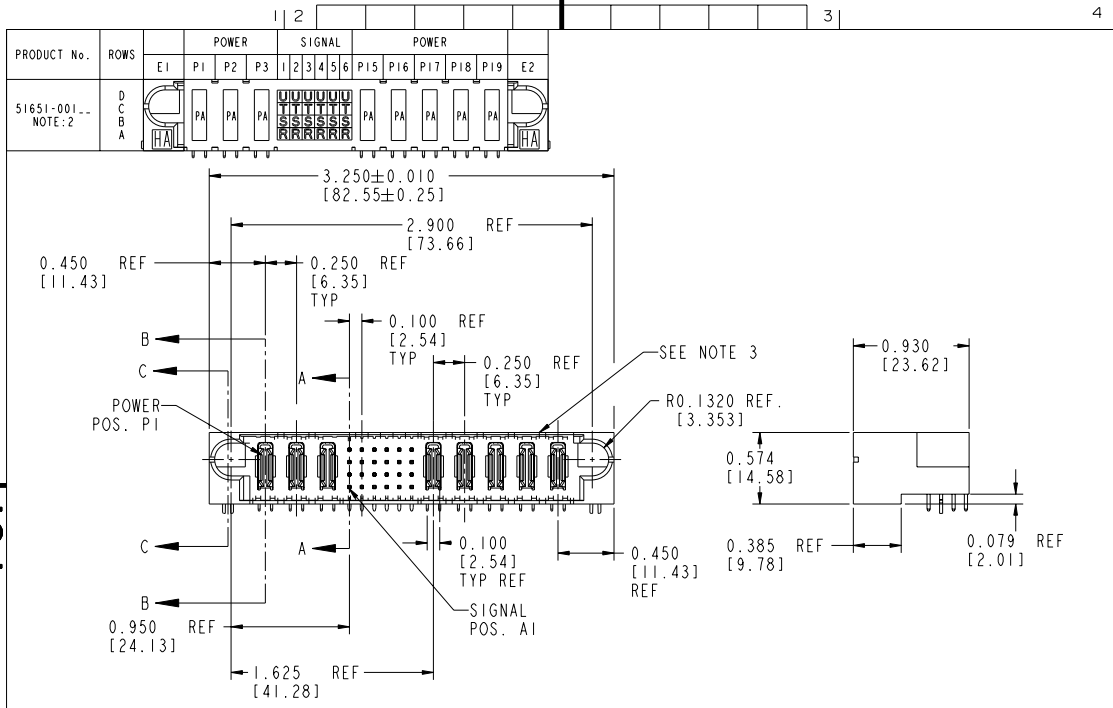
Click to view price, real time Inventory, Delivery & Lifecycle Information:

[FCI](#)
[51651-001](#)

For any questions, you can email us directly:
sales@integrated-circuit.com

Tous droits strictement réservés. Reproduction ou communication à des fins autres que celles autorisées sans la permission écrite du propriétaire. Propriété de c FCI. Droits de reproduction FCI.

All rights strictly reserved. Reproduction or issue to third parties in any form without written authority from the proprietor. Property of FCI. Copyright FCI.



CODE	DIM "M" ±0.010 [0.25]	CONTACT TYPE
R	0.270	SIGNAL
S	0.270	SIGNAL
T	0.270	SIGNAL
U	0.270	SIGNAL
PA	N/A	POWER
HA	N/A	HOLDDOWN

mat'l code				SEE NOTE 1		tolerances unless otherwise specified		CUSTOMER	
ltr	ecn no.	dr	date	linear	angles	COPY		www.fciconnect.com	
A	V91037	CHB	04-29-99	.XX±.01 / .X±.3		projection	title 3P + 24S + 5P		
B	V94076	DLW	10-27-99	.XXX±.005 / .XX±.13		INCH / MM	RIGHT ANGLE SOLDER HEADER		
C	V12541	DA1	12-11-01	XXX±.0020 / .XXX±.05	0°±2°	scale	product family PwrBlade code 213		
D	DG06-0011	CS	01/09/06			1:1	size 51651 SHEET 1 OF 2		
engr	J. BROWN	04-29-99							
chr	J. BROWN	04-29-99							
appd	J. BROWN	04-29-99							
sheet index	revision sheet	0 1	0 2						

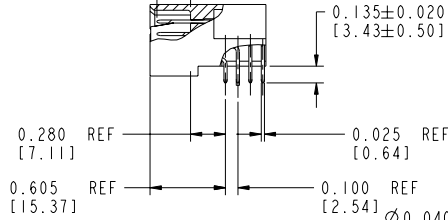
form no. 7530-001-103 1 2 3 4 cage code 22526

Tous droits strictement réservés. Reproduction ou communication à des fins commerciales sans autorisation écrite du propriétaire. Propriété de FCI. Droits de reproduction FCI.

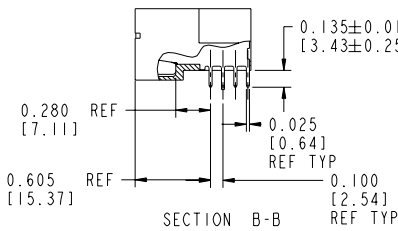
All rights strictly reserved. Reproduction or issue to third parties in any form without written authority from the proprietor. Property of FCI. Copyright FCI.

PRODUCT NUMBER
51651-001-
NOTE: 2

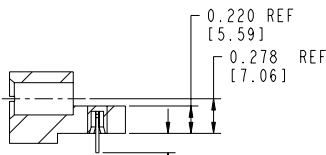
DIM "M"
SEE SHEET 1



SECTION A-A
SCALE 1:1



SECTION B-B
SCALE 1:1



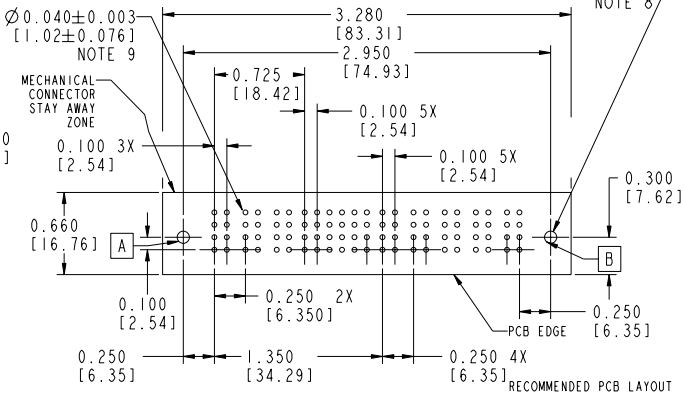
SECTION C-C

CONNECTORS - NOTES:

- HOUSING MATERIAL: UL 94 V-0 GLASS FILLED HIGH TEMP THERMOPLASTIC
SIGNAL PIN MATERIAL: COPPER ALLOY
POWER CONTACT MATERIAL: COPPER ALLOY
- PLATING:
51651, 51651LF, PLATING SPEC SEE PRINT: 100064183.
- "MANUFACTURER" NAME, P/N, AND DATE CODE TO APPEAR ON THIS SURFACE
- PRODUCT SPECIFICATION GS-12-149

PCB - NOTES

- ALL DIMENSIONS ARE BASIC UNLESS OTHERWISE SPECIFIED.
- ALL THROUGH HOLES ARE LOCATED WITH A TRUE POSITION OF .004
- ALL HOLE DIAMETERS ARE FINISHED HOLE SIZE
- Ø.098 THROUGH HOLES ARE UNPLATED
- Ø.0453/1.151 DRILLED HOLES
PLATED WITH .0003/.007 MIN SnPb
OVER .001/1.03 TO .003/.08 PLATING TO ACHIEVE 0.098±0.015 [2.49±0.38]
A .040±.003/1.02±.08 HOLE



mat'l code SEE NOTE 1				tolerances unless otherwise specified		CUSTOMER COPY		FCI www.fciconnect.com	
ltr	ecn no.	dr	date	linear	.XX±.01 / .X±.3	projection	title	3P + 24S + 5P	
				angles	.XXX±.005 / .X±.13	INCH / MM	RIGHT ANGLE SOLDER HEADER		
				dr	.XXX±.0020 / .XXX±.05	scale	product family	PwrBlade	code 213
				engr	0°±2°	size	dwg no	51651	SHEET 2 OF 2
				chr					
				appd					
sheet index	revision sheet								

form no. 7530-001-103

cage code 22526

PDM: Rev:D

STATUS: Released

Printed: Dec 20, 2010