

Excellent Integrated System Limited

Stocking Distributor

Click to view price, real time Inventory, Delivery & Lifecycle Information:

[FCI](#)

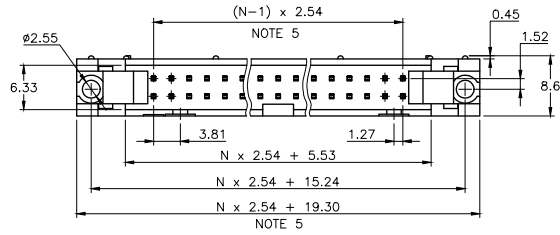
[10087119-006LF](#)

For any questions, you can email us directly:

sales@integrated-circuit.com

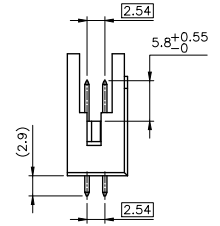
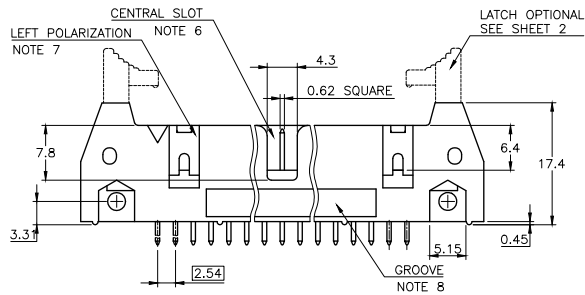
PRODUCT NUMBER
10087119-YXXLF

LATCHING _____ RoHS COMPATIBLE, SEE NOTE 9
 0= WITHOUT LATCH PIN STYLE SEE SHEET 2
 1= STANDARD LATCH
 2= LOW PROFILE LATCH



NOTES:

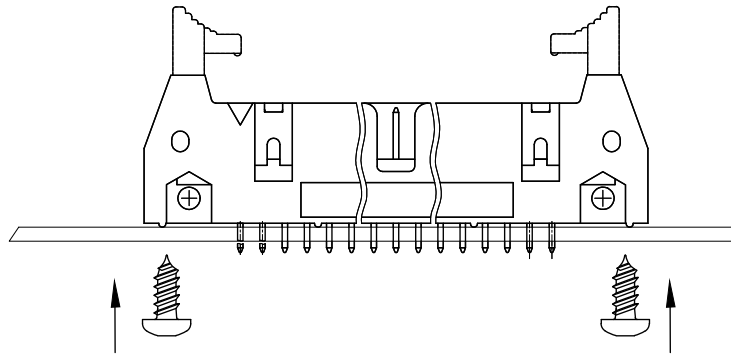
- 1 - HOUSING MAT'L : GLASS FILLED THERMOPLASTIC. UL94V-0 COLOR: GREY
- 2 - PIN MATERIAL : BRASS
- 3 - PRODUCT PACKAGED IN TUBES
- 4 - 40N MIN LATCH RETENTION FORCE AT FIRST EXTRACTION
- 5 - TO DETERMINE DIMENSIONS :
N = NUMBER OF POSITIONS PER ROW
EXAMPLE : 8 POS N x 2.54 = 20.32mm
- 6 - NO CENTRAL SLOT ON POSITIONS 6 & 8
- 7 - NO LEFT POLARIZATION ON POSITIONS 06, 08, 10, 14.
- 8 - NO GROOVE ON POSITIONS 06, 08, 10, 14, 30, 34
- 9 - RoHS COMPATIBLE PRODUCT SPECIFICATIONS
 - a - PLATING:
- "LF" MEANS THE PRODUCT IS LEAD-FREE, 2µm MINIMUM MATTE TIN OVER 1.27µm MINIMUM NICKEL UNDERPLATE.
 - b - MANUFACTURING PROCESS COMPATIBILITY
- THE HOUSING WILL WITHSTAND EXPOSURE TO 260°C ±5°C SOLDER BATH TEMPERATURE FOR 5 SECONDS IN A WAVE SOLDER APPLICATION WITH A 1.6mm MIN THICK CIRCUIT BOARD.
 - c - LABELING:
- MEETS PACKAGING SPECS AS PER GS-14-920
 - d - LEGAL STATEMENT: SEE GS-47-0004



mat'l. code		surface		tolerance		projection		product family	
		ISO 1302		ISO 406 ISO 1101		mm		QUICKIE	
Ltr ecn no dr date		tolerances unless otherwise specified				mm		title	
A F08-0149 LMU 08.03.27		.X ±0.3				scale 2:1		QKIE HEADER	
B B-20412 BVE 15.03.10		.XX ±0.13				FCI		STR 0.05µm Au	
		.XXX ±0.05						dwg no sheet 1 of size	
		dr J.COMPAGNON 08.03.07						10087119 A3	
		engf L.MULIN 08.03.07						type CUSTOMER Drawing	
		chr							
		appd L.MULIN 08.03.07							
sheet index		revision B A							
1 2									

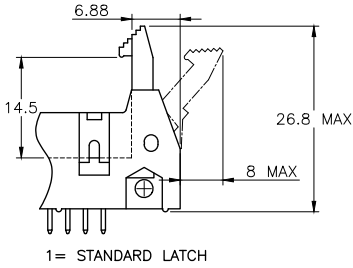
PIN STYLE	SIZE
06	2x3
08	2x4
10	2x5
14	2x7
16	2x8
18	2x9
20	2x10
26	2x13
30	2x15
34	2x17
40	2x20
44	2x22
50	2x25
60	2x30
64	2x32

PLATING :
0.05µm Au FULL PLATED
OVER 1.27µm Ni MIN

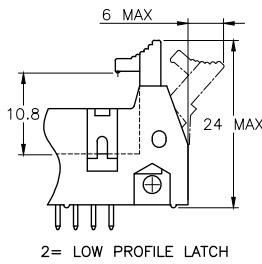


WHEN THE CONNECTORS NEED TO BE FIXED ON THE PCB'S
THE STAINLESS SCREWS REF TC POZI DIN7981 Ø2.9 X 6.5MM
TO BE USED

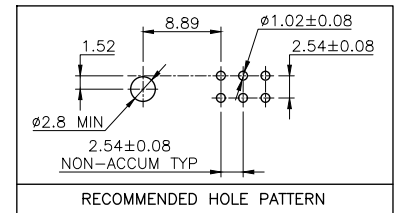
LATCHING FEATURES :



1= STANDARD LATCH



2= LOW PROFILE LATCH



RECOMMENDED HOLE PATTERN

mat'l. code		surface		tolerance		projection		product family	
		ISO 1302		ISO 406 ISO 1101		mm		QUICKIE	
ltr ecn no dr date		tolerances unless otherwise specified		angles		mm		title	
A	B-20412	BVE	15.03.10	.X	±0.3	scale 2:1		QKIE HEADER	
				.XX	±0.13			STR 0.05µm Au	
				.XXX	±0.05			FCI	
				dr	B.VERNIER	15.03.10		dwg no	
				engr	J.COMPAGNON	15.03.10		sheet 2 of	
				chr	L.MULIN	15.03.10		10087119	
				app	L.MULIN	15.03.10		A3	
sheet index		revision sheet						type	
								CUSTOMER Drawing	