

## Excellent Integrated System Limited

Stocking Distributor

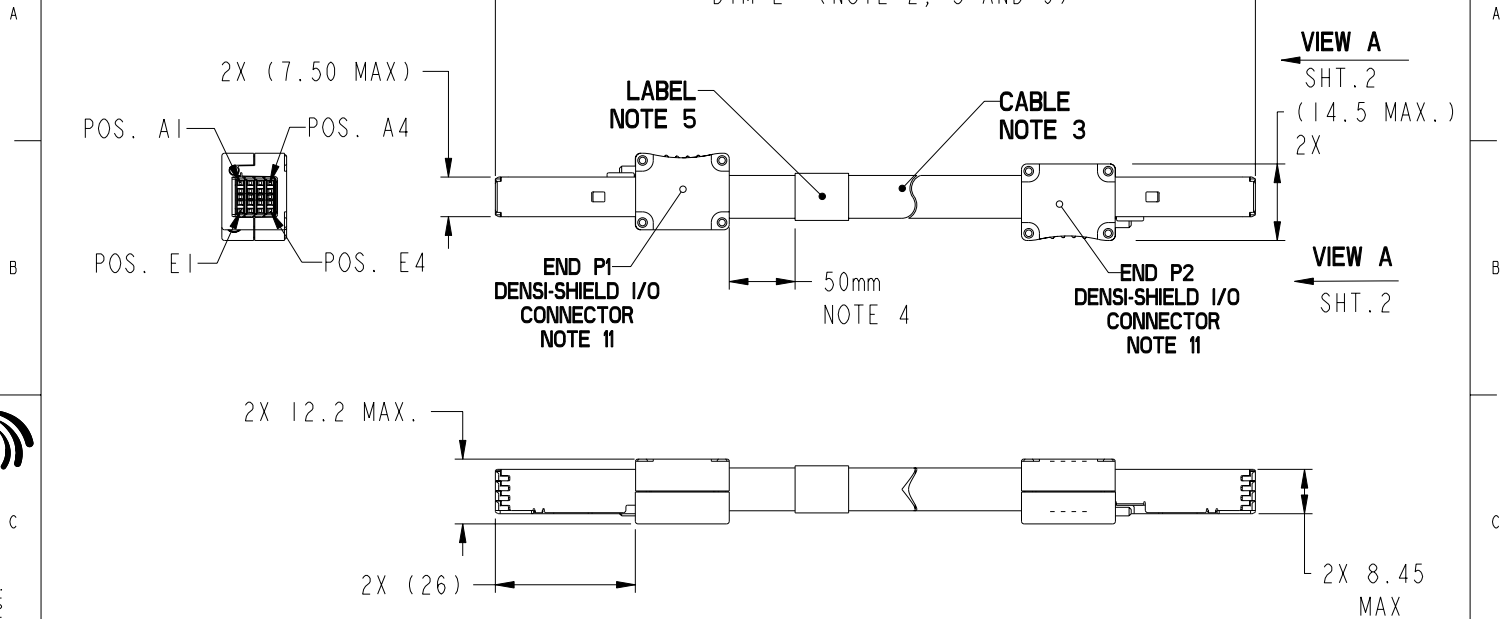
Click to view price, real time Inventory, Delivery & Lifecycle Information:

[FCI](#)  
[10087273-002LF](#)

For any questions, you can email us directly:  
[sales@integrated-circuit.com](mailto:sales@integrated-circuit.com)

PRODUCT NUMBER  
SEE TABLE I

10087273-00XLF



**FCI**  
Copyright FCI.

rev	ecn no	dr	date
A	M08-0079	AGS	03/14/08
B	M08-0090	AGS	03/18/08
C	M08-0203	AGS	07/15/08
D	V09-0053	DAI	2009-03-24

www.fciconnect.com		surface	tolerance	std	projection	MM
		ANGULAR	LINEAR	0.xx	±0.10	size A4 Scale 1:2
		TOLERANCES UNLESS OTHERWISE SPECIFIED		ECN V09-0053		Spec ref -
Dr	D. INGRAM	2009-03-24	Product family		C&A	Rev. D
Eng	J. DUARTE	2009-03-24	CABLE ASSEMBLY		10087273	
Chr	J. DUARTE	2009-03-24	DENSI-SHIELD I/O 8 PAIR			
Appr	J. DUARTE	2009-03-24	catalog no		CUSTOMER	sheet 1 of 4

REV F - 2004-04-13

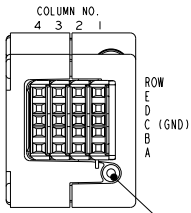
PDM: Rev:D

STATUS: Released

Printed: Dec 23, 2010

PRODUCT NUMBER  
SEE TABLE 1

10087273-00XLF



VIEW A  
SCALE 2:1  
VIEWED FROM  
MATING SIDE

TORX SCREW  
NOTE 14

**TABLE 2**  
**PIN OUT/WIRING LIST**  
**SEE NOTE 6**

END P1		END P2	
PIN NUMBER	WIRE ID	PIN NUMBER	WIRE ID
C1-C4	GROUND	C1-C4	GROUND
A1	TN1	E1	RN1
B1	TP1	D1	RP1
D1	RP2	B1	TP2
E1	RN2	A1	TN2
A2	TN6	E2	RN6
B2	TP6	D2	RP6
D2	RP7	B2	TP7
E2	RN7	A2	TN7
A3	TN8	E3	RN8
B3	TP8	D3	RP8
D3	RP3	B3	TP3
E3	RN3	A3	TN3
A4	TN5	E4	RN5
B4	TP5	D4	RP5
D4	RP4	B4	TP4
E4	RN4	A4	TN4

DW<sub>x</sub> = DRAIN WIRE x  
 RP<sub>x</sub> = RECIEVER PAIR x, POSITIVE POLE  
 RN<sub>x</sub> = RECIEVER PAIR x, NEGATIVE POLE  
 TP<sub>x</sub> = TRANSMITTER PAIR x, POSITIVE POLE  
 TN<sub>x</sub> = TRANSMITTER PAIR, NEGATIVE POLE



FCI  
CABLE ASSEMBLY  
DENSE-SHIELD I/O 8 PAIR

part no 10087273

Rev. D

catalog no -

CUSTOMER

sheet 2 of 4

**PRODUCT NUMBER - TABLE 1**

FCI KIT P/N	FCI ASSEMBLY P/N	CUSTOMER ASSEMBLY P/N	QTY.
10087273-001LF	10054999-R0500BULF (NOTE 3)	02MBB00040AAX	4
10087273-002LF	10054999-R1000BULF (NOTE 3)	02MBB00040ABQ	4

NOTES:

1. MATES WITH FCI PART NUMBERS 10044471 SERIES.

2. UNLESS OTHERWISE SPECIFIED ASSEMBLED LENGTH TOLERANCE =  
 = 1 METER:  $\pm 15.0\text{mm}$   
 > 1 METER TO 10 METER:  $\pm 2\%$  OF "DIM L"  
 > 10 METER:  $+0/-4\%$  OF "DIM L"

3. PART NUMBER DESCRIPTION/DENSI-SHIELD CONNECTOR:  
 10054999 - R XX XX B U LF

WIRE GAGE  
 R: 30 AWG

LF: LEAD FREE (NOTE 10)

U: UN-EQUALIZED

HARDWARE TYPE

B: HIGH SPEED VERSION + TORX SCREW T-5

LENGTH "DIM L" NOTE 9  
 XXXX: XX METERS, XX CENTIMETERS

EXAMPLES OF LENGTH GIVEN BELOW:  
 0500 = 05 METERS 00 CENTIMETERS  
 1000 = 10 METERS 00 CENTIMETERS

EXAMPLE: 10054999-R0500BULF = 30 AWG, 05 METER, 00 CENTIMETERS, HIGH SPEED TORX SCREW T-5, UN-EQUALIZED AND LEAD FREE

4. UNLESS OTHERWISE SPECIFIED LABEL POSITION SHALL BE APPROXIMATELY  $50\text{mm} \pm 15\text{mm}$  FROM REAR OF CONNECTOR.

5. UNLESS OTHERWISE SPECIFIED STANDARD LABEL SHALL BE 10081646-002.

LABEL DETAILS;

- MANUFACTURER CODE OR NAME
- CUSTOMER P/N OR FCI P/N
- REVISION
- DATE CODE (WW/YY FORMAT) - SERIAL NUMBER
- COUNTRY ORIGIN

FONT SHALL BE CLEARLY VISABLE AND BLACK IN COLOR.

	title	CABLE ASSEMBLY	desig no	10087273	Rev.	D
	catalog no	DENSI-SHIELD I/O 8 PAIR	CUSTOMER	sheet 3 of 4		

REV F - 2004-04-17

1

2

PDM: Rev:D

STATUS:Released

4Printed: Dec 23, 2010



Copyright FCI.

PRODUCT NUMBER  
SEE TABLE I

10087273-00XLF

NOTES CONTINUED:

- 6. ALL CABLE ASSEMBLIES SHALL BE TESTED 100% FOR CONTINUITY AS DEFINED IN WIRING LIST.
- 7. UNLESS OTHERWISE SPECIFIED ALL CABLE ASSEMBLIES SHALL BE 100% HI-POT TESTED PER PRODUCT SPECIFICATION: GS-12-314.
- 8. OTHER TESTING PERFORMED AS REQUIRED BY PRODUCT SPECIFICATION: GS-12-314.
- 9. THIS DIMENSION IS A FINISHED PRODUCT LENGTH.
- 10. LEAD FREE PRODUCTS MEET EUROPEAN UNION DIRECTIVES AND OTHER COUNTRY REGULATIONS AS DESCRIBED IN GS-22-008.
- 11. CONNECTOR ASSEMBLIES SHOWN ARE FOR REFERENCE ONLY AND MAY NOT SHOW ALL PART DETAIL. REFERENCE CONNECTOR ASSEMBLY DRAWINGS FOR COMPLETE DETAILS.
- 12. PACKAGING PER GLOBAL STANDARD GS-14-1272.
- 13. MATERIALS:  
COVERS: ZINC ALLOY, Cu-Ni-Sn PLATED.  
SHEET METAL COVER: COPPER ALLOY  
FERRULES: COPPER ALLOY, Ni-Sn PLATED  
TERMINAL BLOCK:  
- HOUSING: THERMOPLASTIC  
- TERMINALS: COPPER ALLOY, FINISH: MIN 0.8um Au ON  
Ni-UNDERLAYER IN CONTACT AREA.  
- TRANSITION BOARD: FR4 FIBERGLASS FILLED EPOXY.  
- LOCKING SCREW: STAINLESS STEEL  
- SCREW STOP: TEFLON
- 14. MAXIMUM APPLICABLE TORQUE ON LOCKING SCREW = 0.3um

	title	CABLE ASSEMBLY	desig no	10087273	Rev.	D
	catalog no	DENSI-SHIELD I/O 8 PAIR	-	CUSTOMER	sheet 4 of 4	

REV F - 2006-06-17

**PDM: Rev:D**

STATUS: **Released**

<sup>4</sup>Printed: Dec 23, 2010



Copyright FCI.