

Excellent Integrated System Limited

Stocking Distributor

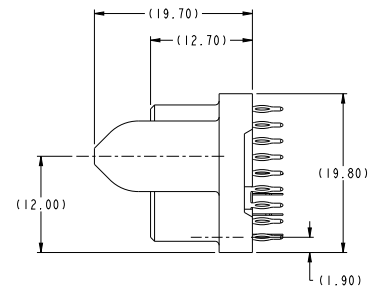
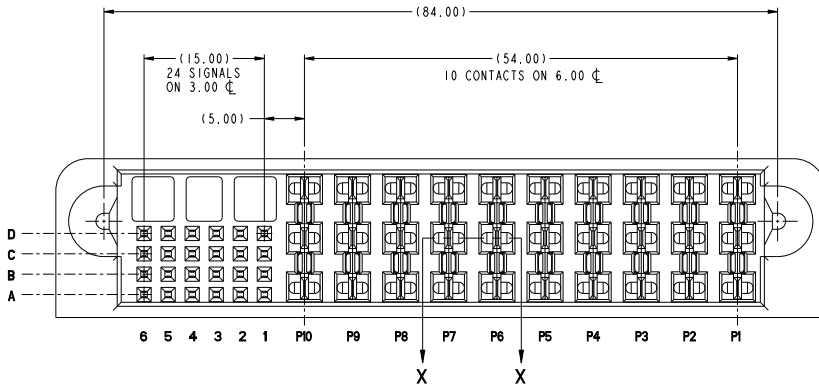
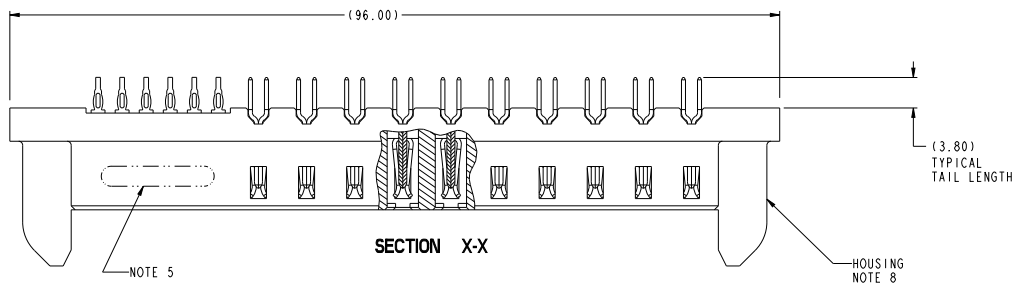
Click to view price, real time Inventory, Delivery & Lifecycle Information:

[FCI](#)

[10065127-001](#)

For any questions, you can email us directly:

sales@integrated-circuit.com



Copyright FCI

spec ref	*	dr	Wenfang Duan	approval	projection	MM	size	A2	scale	3:1
tolerance std	TOLERANCES UNLESS OTHERWISE SPECIFIED	eng	Wenfang Duan	revision	①	←	acc no		rel level	Released
ASME Y14.5		chr	Wenfang Duan	approval	product family					
surface	linear	0.1	±0.5	FCI	VERT RECP ASSY 5DC-12S		deg	10065127	rev	D
ASME Y14.5	angular	0.25	±0.25	www.fci.com	HCI POWER CONNECTOR		deg			
		0.125	±0.10		Product - Customer Draw					sheet 1 of 4

PDS: Rev:D

STATUS: Released

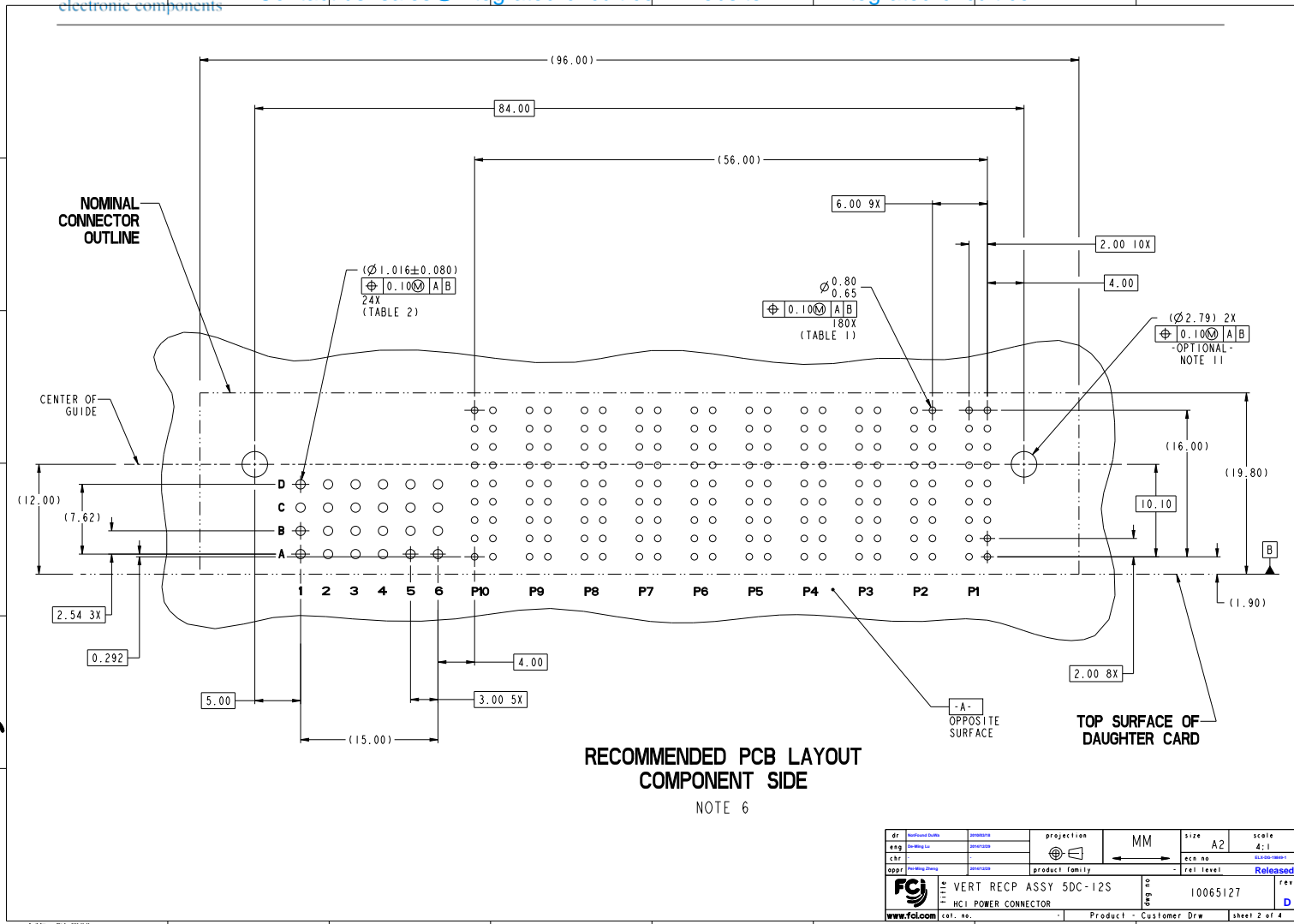
Printed: Dec 30, 2014

2

3

4

5



**RECOMMENDED PCB LAYOUT
COMPONENT SIDE**
NOTE 6

dr: Yi-Hong-Du	designed: Yi-Hong-Du	projection: MM	size: A2	scale: 2:1
eng: Yi-Hong-Du	checked: Yi-Hong-Du	product family: FCI POWER CONNECTOR	acc no:	rel level: Released
appr: Yi-Hong-Du	approved: Yi-Hong-Du	part no: 10065127	cat. no:	rev: D
		Product - Customer Draw sheet 2 of 4		

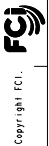
Copyright FCI

A
B
C
D
E
F

A
B
C
D
E
F

TOP LAYER DESCRIPTION	TABLE 1 (HCI POWER) PLATED THROUGH-HOLE REQUIREMENTS							
	DRILLED HOLE DIAMETER	COPPER THICKNESS	TIN-LEAD THICKNESS	NICKEL THICKNESS	GOLD THICKNESS	TIN THICKNESS	SILVER THICKNESS	FINISHED HOLE DIAMETER
TIN-LEAD	0.81-0.86 (0.85 DRILL)	0.025 - 0.050	0.005 - 0.015	--	--	--	--	0.65 - 0.80
IMMERSION TIN	0.81-0.86 (0.85 DRILL)	0.025 - 0.050	--	--	--	0.9 - 1.5um	--	0.70 - 0.80
IMMERSION SILVER	0.81-0.86 (0.85 DRILL)	0.025 - 0.050	--	--	--	--	0.15 - 0.65um	0.70 - 0.80
COPPER (SEE NOTE 9)	0.81-0.86 (0.85 DRILL)	0.025 - 0.050	--	--	--	--	--	0.70 - 0.80
GOLD	0.81-0.86 (0.85 DRILL)	0.025 - 0.050	--	0.003 - 0.007	FLASH UP TO 0.0002	--	--	0.69 - 0.80

TOP LAYER DESCRIPTION	TABLE 2 (HPC SIGNALS) PLATED THROUGH-HOLE REQUIREMENTS			
	DRILLED HOLE DIAMETER	COPPER THICKNESS	TIN-LEAD THICKNESS	FINISHED HOLE DIAMETER
TIN-LEAD	1.125-1.175 ($\varnothing .0453 \pm .0010$)	0.025-0.050	0.005-0.015	0.94 - 1.10 ($\varnothing .040 \pm .003$)



Copyright FCI

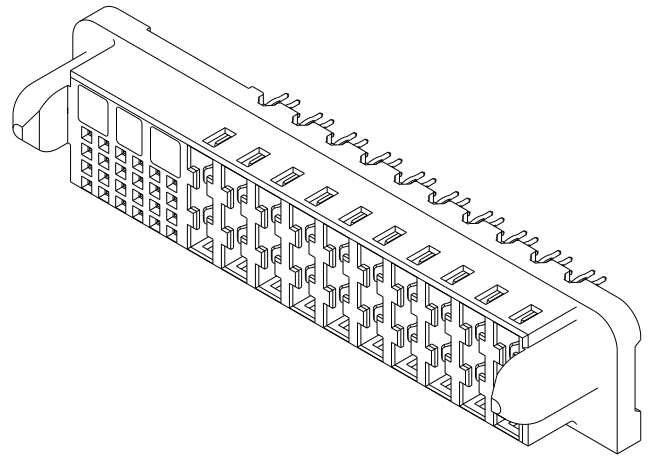
dr: <small>Yan-Hong-Du</small>	designed by: <small>Yan-Hong-Du</small>	projection:	MM	size: A2	scale: 1:1
eng: <small>Yan-Hong-Du</small>	checked by: <small>Yan-Hong-Du</small>			acc no: <small>10065127-001</small>	rel level: Released
appr: <small>Yan-Hong-Du</small>	approved by: <small>Yan-Hong-Du</small>	product family: <small>FCI</small>			
		VERT RECP ASSY 5DC-12S HCI POWER CONNECTOR		10065127 10065127	rev: D sheet 3 of 4

PDS: Rev:D

STATUS: Released

Printed: Dec 30, 2014

PART NUMBER	M2.5 SCREW NOTE 11	TAIL PLATING	TAIL TYPE
10065127-001	OPTIONAL	SnPb	PRESS-FIT
10065127-001LF	OPTIONAL	Sn	PRESS-FIT



NOTES:

1. CONNECTOR MATERIALS:
HOUSING: HIGH TEMPERATURE THERMOPLASTIC, BLACK
UL 94V-0 COMPLIANT
CONTACTS: HIGH PERFORMANCE COPPER ALLOY
2. CONTACT FINISH (ref GS-12-380 SECTION 5.2)
3. PRODUCT SPECIFICATION: GS-12-380.
4. APPLICATION SPECIFICATION: GS-20-070.
5. PRODUCT MARKING (PRODUCT NUMBER & DATE CODE) ON HOUSING IN AREA SHOWN.
6. MINIMUM NOMINAL PCB THICKNESS: 1.6mm
7. PACKAGING MEETS FCI SPECIFICATION GS-14-1073.
8. HOUSING COMPONENT WILL WITHSTAND EXPOSURE TO 260°C PEAK TEMPERATURE FOR 60 SECONDS IN A CONVECTION, INFRA-RED, OR VAPOR PHASE REFLOW OVEN.
9. COPPER PLATING THICKNESS IN CENTER OF VIA-HOLE CAN BE NO MORE THAN 0.003 LESS THAN OTHER AREAS.
10. ALL HOLE SIZES ARE FINISHED HOLE SIZES.
11. RECOMMENDED RETENTION TO PCB:
Ø0.110[2.79] THRU HOLE (UNPLATED) FOR M2.5 SELF THREADING SCREW, MAX HEAD Ø0.177[4.50].
RECOMMENDED SCREW LENGTH 0.276[7.00] + PCB THICKNESS.
RECOMMENDED SCREW SEATING TO PCB TORQUE: 2-5 lbf-in (2300-5760 gf-cm).

dr: <small>David Duda</small>	designed by: <small>designed</small>	projection: MM	size: A2	scale: 3:1
eng: <small>David Duda</small>	checked: <small>designed</small>		acc no:	rel level: Released
app: <small>David Duda</small>	approved: <small>designed</small>	product family:	deg no:	rev: D
VERT RECP ASSY 5DC-12S FCI POWER CONNECTOR		10065127		
www.fci.com cat. no.		Product - Customer Draw		sheet 4 of 4

PDS: Rev:D

STATUS: Released

Printed: Dec 30, 2014

Copyright FCI