

Excellent Integrated System Limited

Stocking Distributor

Click to view price, real time Inventory, Delivery & Lifecycle Information:

[FCI](#)
[59355-052AC](#)

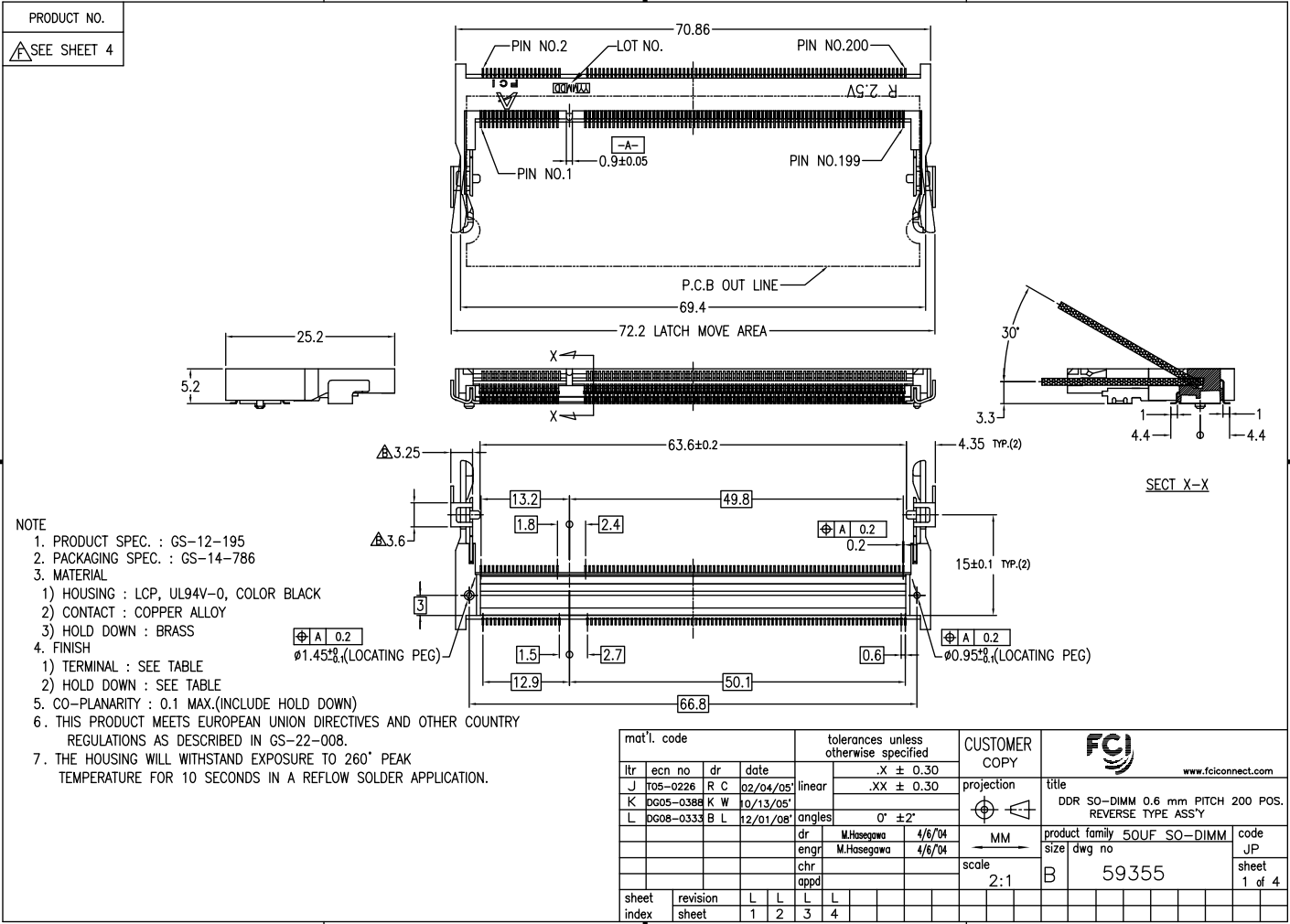
For any questions, you can email us directly:

sales@integrated-circuit.com

Tous droits strictement réservés. Reproduction ou communication en des tiers interdite sous quelque forme que ce soit sans autorisation écrite du propriétaire. Propriété de c FCI. Droits de reproduction FCI.



All rights strictly reserved. Reproduction or issue to third parties in any form whatsoever is not permitted without written authority from the proprietor. Property of FCI. Copyright FCI.



NOTE

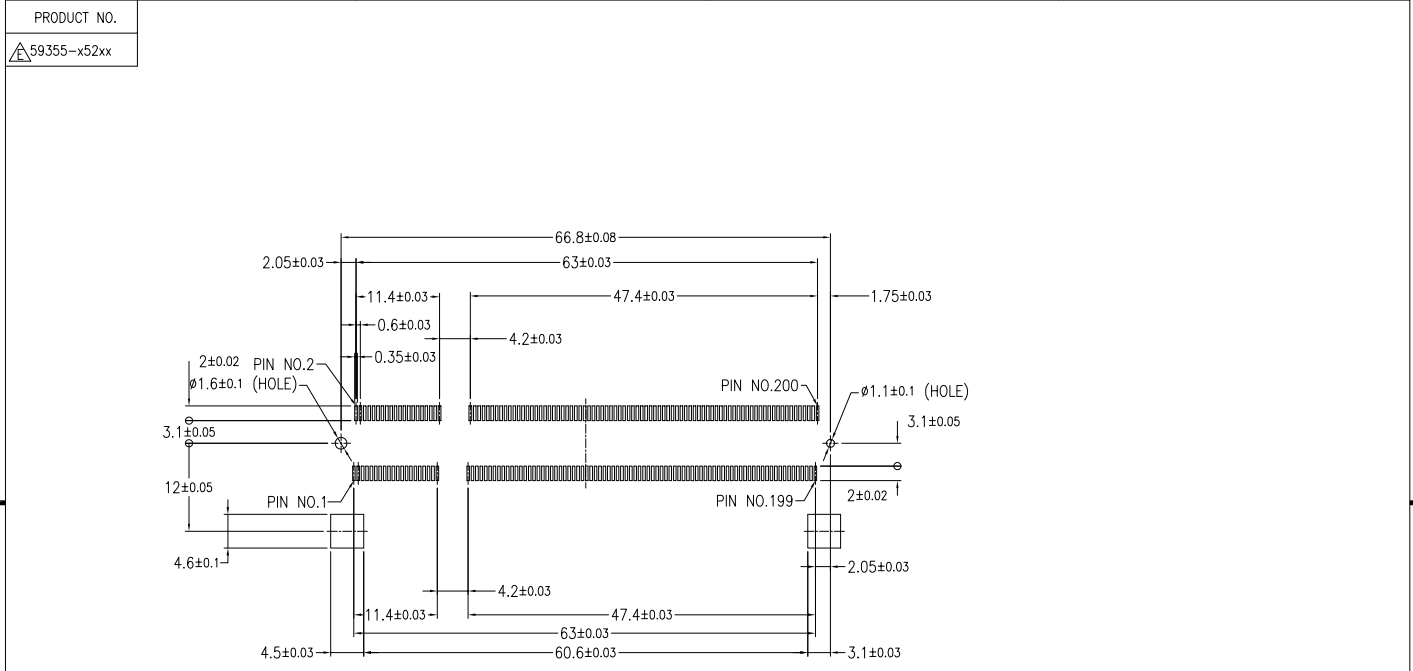
1. PRODUCT SPEC. : GS-12-195
2. PACKAGING SPEC. : GS-14-786
3. MATERIAL
 - 1) HOUSING : LCP, UL94V-0, COLOR BLACK
 - 2) CONTACT : COPPER ALLOY
 - 3) HOLD DOWN : BRASS
4. FINISH
 - 1) TERMINAL : SEE TABLE
 - 2) HOLD DOWN : SEE TABLE
5. CO-PLANARITY : 0.1 MAX.(INCLUDE HOLD DOWN)
6. THIS PRODUCT MEETS EUROPEAN UNION DIRECTIVES AND OTHER COUNTRY REGULATIONS AS DESCRIBED IN GS-22-008.
7. THE HOUSING WILL WITHSTAND EXPOSURE TO 260° PEAK TEMPERATURE FOR 10 SECONDS IN A REFLOW SOLDER APPLICATION.

mat'l. code				tolerances unless otherwise specified		CUSTOMER COPY		FCI www.fciconnect.com	
ltr	ecp no	dr	date	.X ± 0.30	projection	title			
J	tos-0226	R C	02/04/05	.XX ± 0.30		DDR SO-DIMM 0.6 mm PITCH 200 POS. REVERSE TYPE ASSY			
K	pc05-0388	K W	10/13/05	angles		product family		code	
L	pc08-0333	B L	12/01/08	0° ± 2°	MM	50UF	SO-DIMM	JP	
				dr	M.Hasegawa	4/6/04	size	dwg no	sheet
				enrg	M.Hasegawa	4/6/04	B	59355	1 of 4
				chr					
				appd					
sheet index	revision sheet	L	L	L	L	L	L	L	L
		1	2	3	4				

Tous droits strictement réservés. Reproduction ou communication à des tiers
interdite sous quelque forme que ce soit sans autorisation écrite du propriétaire.
Propriété de c FCI. Droits de reproduction FCI.



All rights strictly reserved. Reproduction or issue to third parties in any
form whatever is not permitted without written authority from the proprietor.
Property of FCI. Copyright FCI.



RECOMMENDED MOUNTING P.C.B LAYOUT

mat'l. code		tolerances unless otherwise specified		CUSTOMER COPY		FCI www.fciconnect.com	
ltr	ecn no	dr	date	linear	.X ± 0.30	projection	title
					.XX ± 0.30		DDR SO-DIMM 0.6 mm PITCH 200 POS. REVERSE TYPE ASS'Y
				angles	0° ±2°	MM	product family 50UF SO-DIMM
		dr	M.Hosegawa	4/6/04		scale	size
		enrg	M.Hosegawa	4/6/04	2:1	B	dwg no
		chr					JP
		appd					sheet
sheet index	revision sheet						2 of

ACAD

PDM: Rev:L

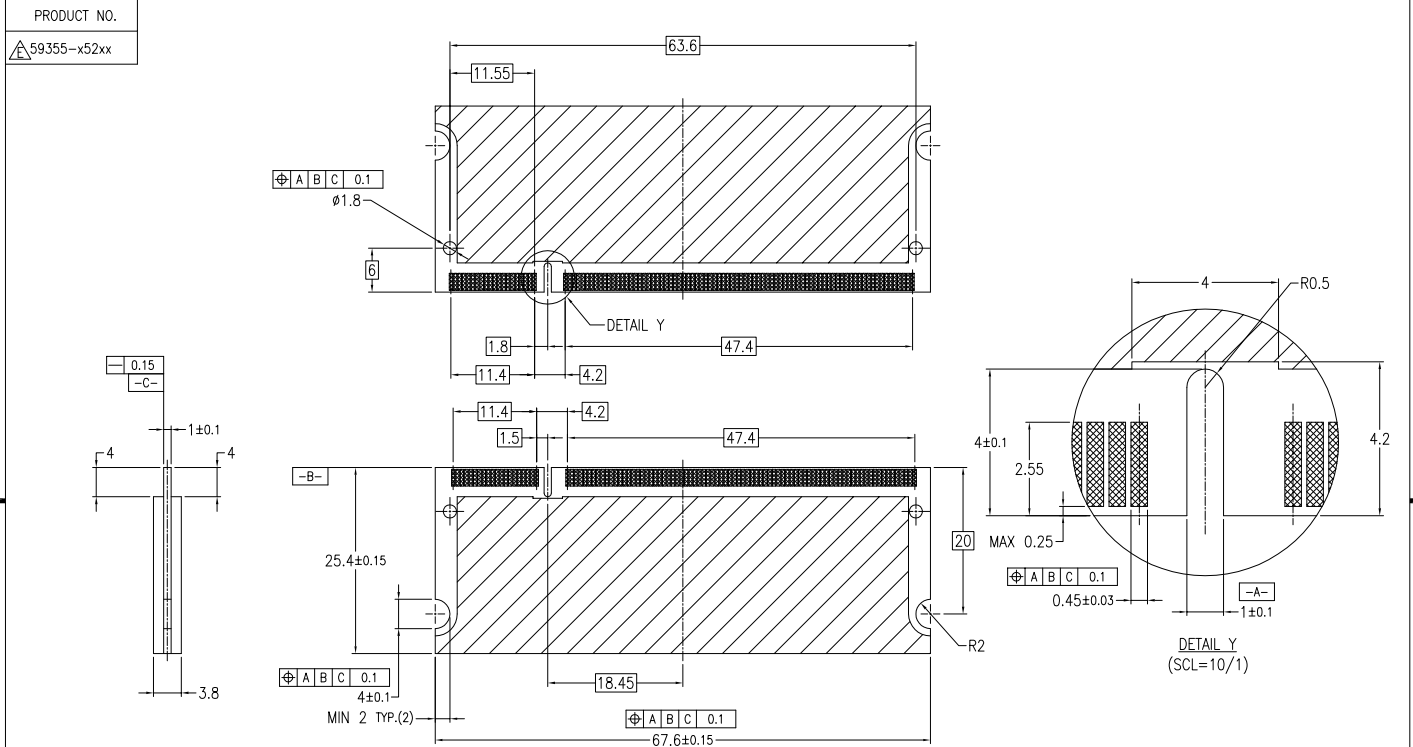
STATUS Released

Printed: Jul 28, 2010

Tous droits strictement réservés. Reproduction ou communication à des tiers
interdite sous quelque forme que ce soit sans autorisation écrite du propriétaire.
Propriété de c FCI. Droits de reproduction FCI.



All rights strictly reserved. Reproduction or issue to third parties in any
form whatever is not permitted without written authority from the proprietor.
Property of FCI. Copyright FCI.



RECOMMENDED MODULE P.C.B LAYOUT

mat'l. code		tolerances unless otherwise specified		CUSTOMER COPY		FCI www.fciconnect.com	
ltr	ecn no	dr	date	.X ± 0.30	projection	title	
L				.XX ± 0.30	MM	DDR SO-DIMM 0.6 mm PITCH 200 POS. REVERSE TYPE ASS'Y	
				angles	0° ± 2°	product family	code
		dr	M.Hosegawa	4/6/04		50UF SO-DIMM	JP
		enr	M.Hosegawa	4/6/04	scale	size	sheet
		chr			2:1	dwg no	3 of
		appd				B	
sheet index	revision sheet					59355	

Tous droits strictement réservés. Reproduction ou communication à des tiers
interdite sous quelque forme que ce soit sans autorisation écrite du propriétaire.
Propriété de c FCI. Droits de reproduction FCI.



All rights strictly reserved. Reproduction or issue to third parties in any
form whatever is not permitted without written authority from the proprietor.
Property of FCI. Copyright FCI.

PRODUCT NO.	LOCATING PEG	TERMINAL CONTACT AREA FINISH	HOLD DOWN FINISH	SOLDER TAIL FINISH
59355-052FS	YES	Au FLASH	Pure Sn PLATING	Au FLASH PLATING
59355-152FS	NO			
59355-052TS	YES	Au 0.3µm MIN.		
59355-152TS	NO			
59355-052AS	YES	Au 0.76µm MIN.	Sn-Pb PLATING	
59355-152AS	NO			
59355-052FC	YES	Au FLASH		
59355-152FC	NO			
59355-052TC	YES	Au 0.3µm MIN.	Pure Sn PLATING	
59355-152TC	NO			
59355-052AC	YES	Au 0.76µm MIN.		
59355-152AC	NO			
59355-252FS	YES	Au FLASH	Pure Sn PLATING	Pure Sn PLATING
59355-352FS	NO			
59355-252TS	YES	Au 0.3µm MIN.		
59355-352TS	NO			
59355-252AS	YES	Au 0.76µm MIN.	Sn-Pb PLATING	
59355-352AS	NO			
59355-252FC	YES	Au FLASH		
59355-352FC	NO			
59355-252TC	YES	Au 0.3µm MIN.	Pure Sn PLATING	
59355-352TC	NO			
59355-252AC	YES	Au 0.76µm MIN.		
59355-352AC	NO			

PRODUCT NO.	LOCATING PEG	TERMINAL CONTACT AREA FINISH	HOLD DOWN FINISH	SOLDER TAIL FINISH
59355-452FS	YES	Au FLASH	Pure Sn PLATING	Sn-Pb PLATING
59355-552FS	NO			
59355-452TS	YES	Au 0.3µm MIN.		
59355-552TS	NO			
59355-452AS	YES	Au 0.76µm MIN.	Sn-Pb PLATING	
59355-552AS	NO			
59355-452FC	YES	Au FLASH		
59355-552FC	NO			
59355-452TC	YES	Au 0.3µm MIN.	Pure Sn PLATING	
59355-552TC	NO			
59355-452AC	YES	Au 0.76µm MIN.		
59355-552AC	NO			

△ 59355 - □ □ □ □ □ LF

<PACKING METHOD>
R : TAPE REEL
DEFAULT : TRAY

<HOLD DOWN FINISH>
S : Pure Sn
B : Sn-Pb

<CONTACT AREA FINISH>
F : Au FLASH
T : Au 0.3µm MIN.
A : Au 0.76µm MIN.

<TOTAL HEIGHT>
52 : 5.2mm

<LOCATING PEG, SOLDER TAIL FINISH>
0 : YES, Au FLASH
1 : NO, Au FLASH
2 : YES, Pure Sn PLATING
3 : NO, Pure Sn PLATING
4 : YES, Sn-Pb PLATING
5 : NO, Sn-Pb PLATING

For Rohs OPTIONS:
TAIL PLATING CODE MUST BE 0~3.
HOLD DOWN PLATING CODE MUST BE "S".
"LF" CODE IS EXIST IN THE END.
EX: 59355-252TSLF

FOR NOT Rohs COMPATIBLE:
THIS "LF" CODE IS "BLANK".
EX: 59355-452TS

mat'l. code		tolerances unless otherwise specified		CUSTOMER COPY		FCI www.fciconnect.com	
ltr	ecr no	dr	date	linear	.X ± 0.30	projection	title
L					.XX ± 0.30		DDR SO-DIMM 0.6 mm PITCH 200 POS. REVERSE TYPE ASS'Y
				angles	0° ±2°	MM	product family 50UF SO-DIMM
		dr	M.Hosegawa	4/6/04		scale	size
		enrg	M.Hosegawa	4/6/04		2:1	dwg no
		chr					B
		appd					59355
sheet index	revision sheet						JP
							sheet 4 of