

Excellent Integrated System Limited

Stocking Distributor

Click to view price, real time Inventory, Delivery & Lifecycle Information:

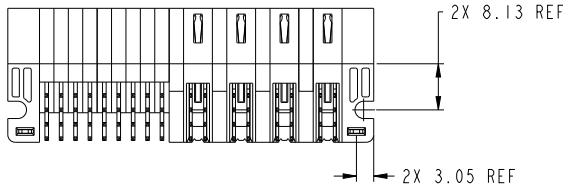
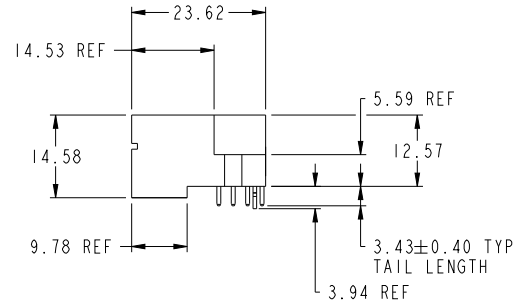
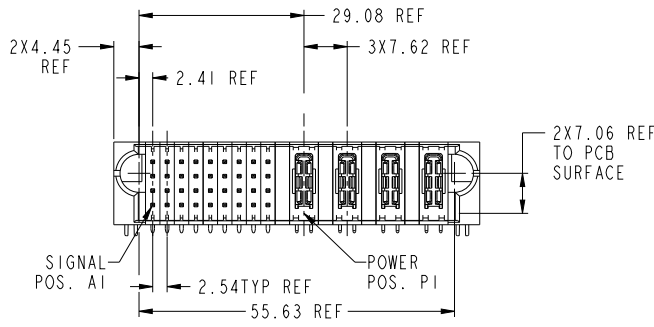
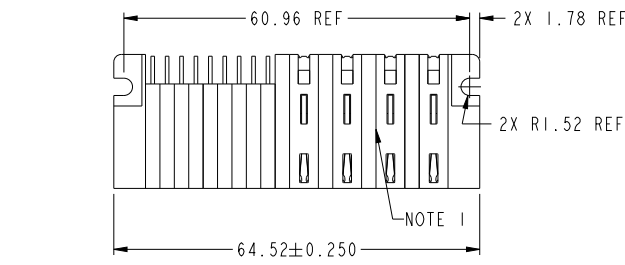
[FCI](#)

[10106116-4009002LF](#)

For any questions, you can email us directly:

sales@integrated-circuit.com

PRODUCT NUMBER SEE SHEET 2



Copyright FCI

spec ref	-	dr	Xia Bob	20131208	projection	MM	size	A3	scale	3:2	
tolerance std	ASME Y14.5	eng	Xia Bob	20131208			ecn no	-	rel level	Released	
TOLERANCES UNLESS OTHERWISE SPECIFIED		chr	Li-Hu	20131208			product family	PwrBlade+			
surface	linear	appr	Pai-Ming Zhang	20131208			cat. no.	10106116-4009002	rev	A	
	angular	www.fci.com			Product - Customer Drw	sheet 1 of 3					

Print Date - REV C - 2009-04-09

1

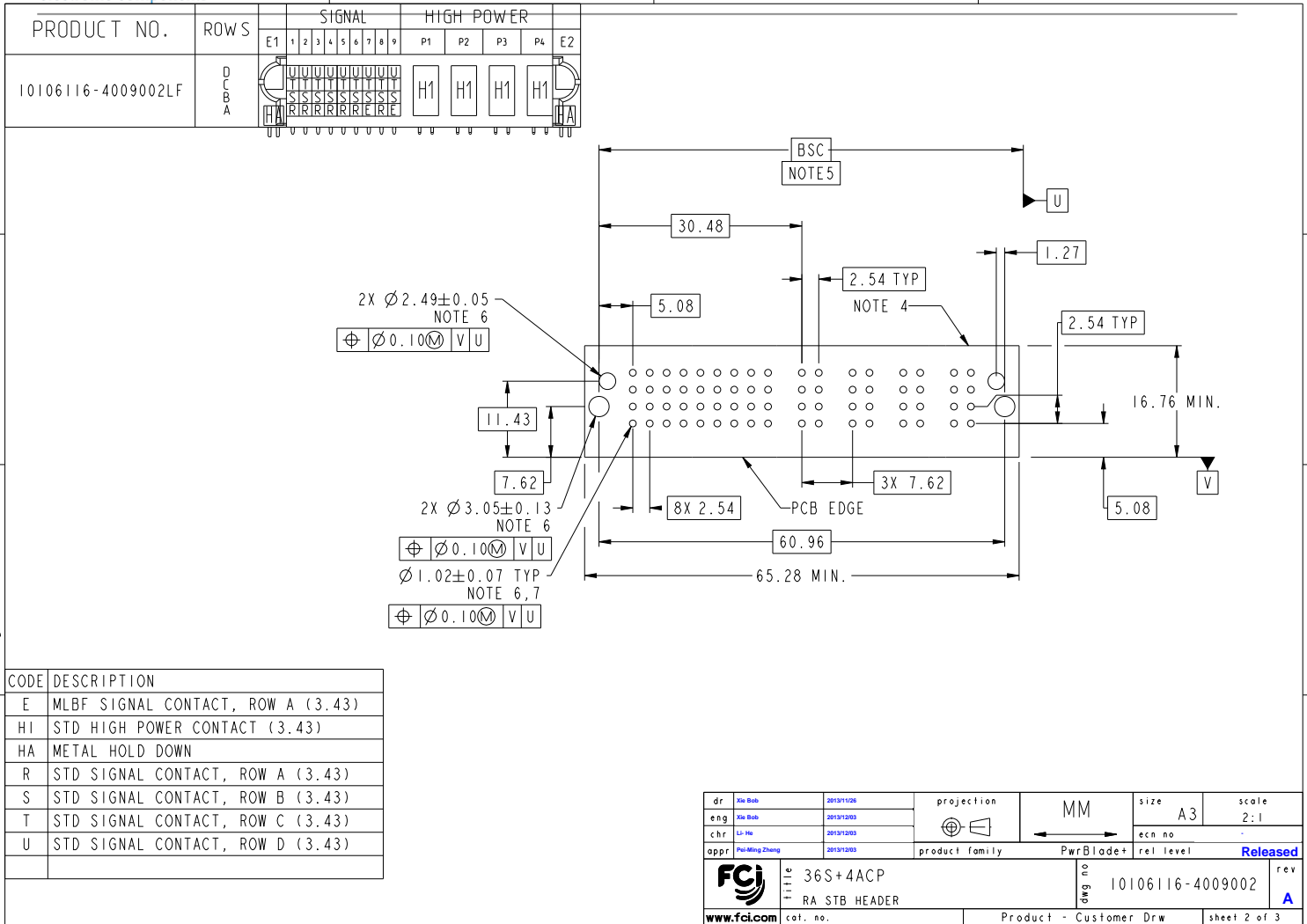
2

3

PDS: Rev :A

STATUS:Released

Printed: Dec 04, 2013



Copyright FCI

NOTES:

- 1) "FCI", PART NUMBER AND DATE CODE TO BE MARKED ON THIS SURFACE.
THE P/N CAN BE OMITTED IF THERE IS NOT ENOUGH SPACE ON THIS SURFACE.
- 2) MATERIALS:
-HOUSING - GLASS FILLED WITH HIGH TEMP THERMOPLASTIC, UL94V-0.
-SIGNAL CONTACT - COPPER ALLOY.
-POWER CONTACT - HIGH CONDUCTIVITY COPPER ALLOY.
- 3) PLATING SPECIFICATION REFER TO FCI 10116351
- 4) DENOTES CONNECTOR KEEP OUT ZONE.
- 5) DATUM AND BASIC DIMENIONS WERE ESTABLISHED BY CUSTOMER.
- 6) ALL HOLE DIAMETERS ARE FINISHED HOLE SIZES.
- 7) 1.15 ± 0.025 MM DRILLED HOLE PLATED WITH 0.00762MM MIN Sn
OVER 0.0254-0.0762MM Cu PLATING TO ACHIEVE A 1.02 ± 0.07 MM HOLE.
- 8) PRODUCT SPECIFICATION REFER TO FCI GS-12-658.
APPLICATION SPECIFICATION REFER TO FCI GS-20-141.
PRODUCT PACKAGED IN TRAYS, REFER TO FCI GS-14-1502.

dr	Xia Bob	20131209	projection	MM	size	A3	scale	3:2
eng	Xia Bob	20131209			ecn no			
chr	Li-Hu	20131209			rel level	Released		
appr	Pai-Ming Zhang	20131209	product family	PwrBlade+				
		www.fci.com	title 36S+4ACP RA STB HEADER	eng no 10106116-4009002	rev A			
		cat. no.	Product - Customer Drw		sheet 3 of 3			



Copyright FCI.