

## Excellent Integrated System Limited

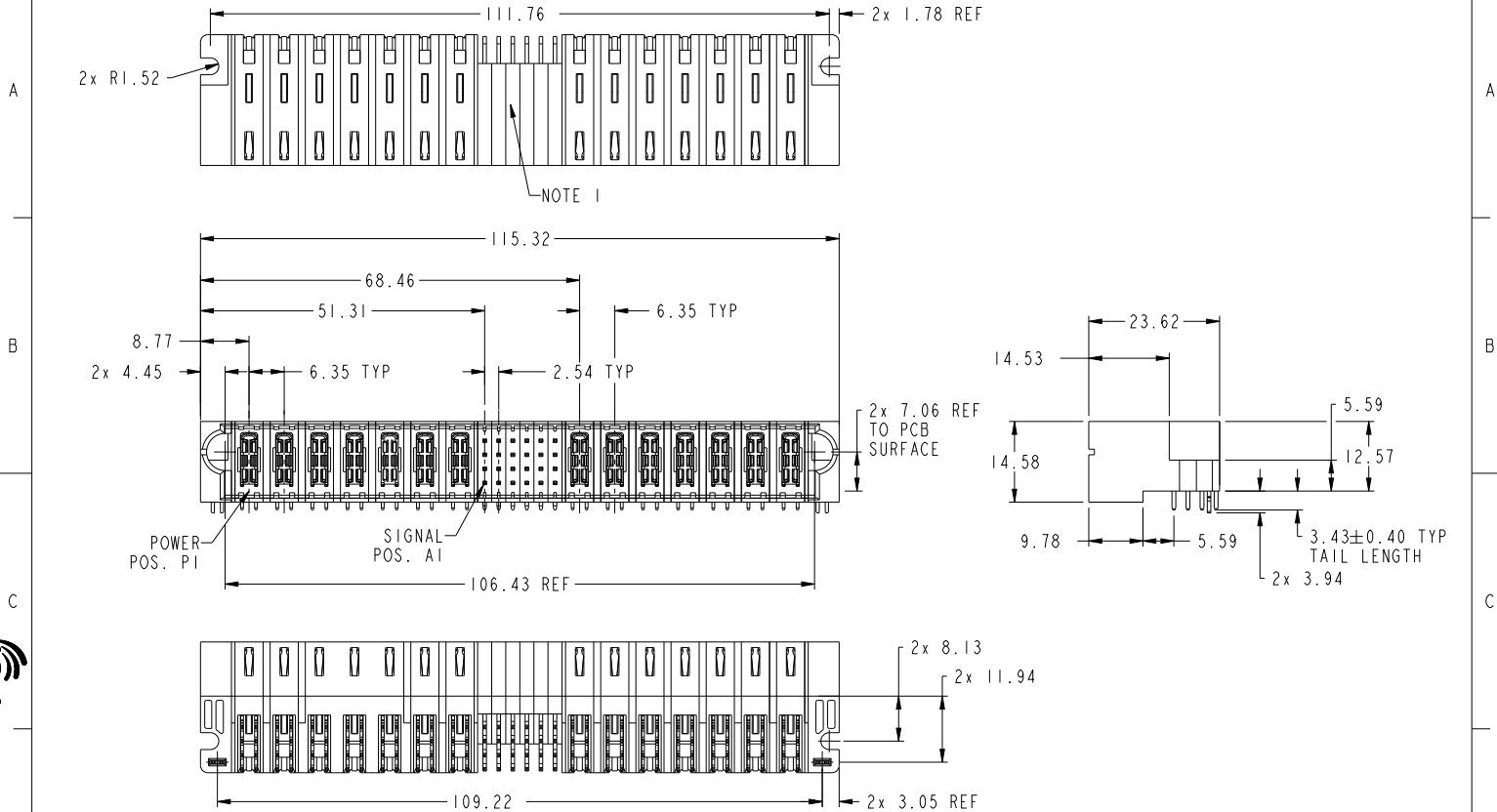
Stocking Distributor

Click to view price, real time Inventory, Delivery & Lifecycle Information:

[FCI](#)  
[10106124-E006001LF](#)

For any questions, you can email us directly:  
[sales@integrated-circuit.com](mailto:sales@integrated-circuit.com)

PRODUCT NUMBER SEE SHEET 2



Copyright FCI.

spec ref	*	dr	Rainbow Zhan	20140807	projection	MM	size	A3	scale	3:2	
tolerance std	ASME Y14.5	eng	Rainbow Zhan	20140807			ecn no	-	rel level	Released	
TOLERANCES UNLESS OTHERWISE SPECIFIED		chr	Li-Hu	20140806			product family	PwrBlade+			
surface	linear	appr	Pai-Ming Zhang	20140807			title	7HP + 24S + 7HP RA STB HEADER	eng no	10106124-E006001	rev
ASME Y14.5	angular	0°	±2°	www.fci.com	cat. no.	Product - Customer Drw	sheet 1 of 3				

Print Date - REV C - 2010-04-20

1

2

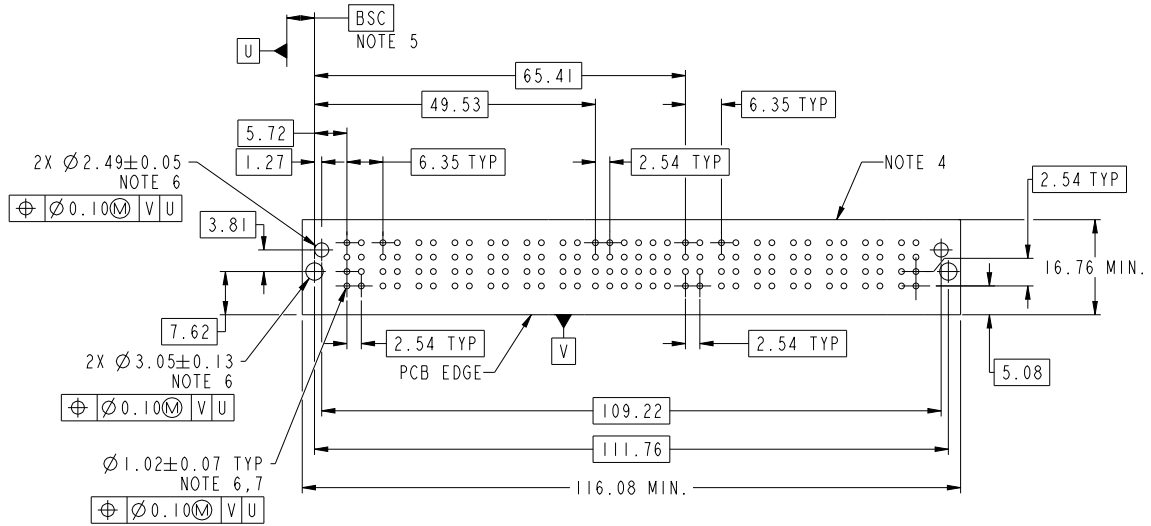
3

PDS: Rev A

STATUS: Released

Printed: Aug 07, 2014

PRODUCT NO.	ROWS	HIGH POWER							SIGNAL						HIGH POWER								
		E1	P1	P2	P3	P4	P5	P6	P7	1	2	3	4	5	6	P8	P9	P10	P11	P12	P13	P14	E2
10106124-E006001LF	D C B A	H1	H1	H1	H1	H1	H1	H1	H1	H1	H1	H1	H1	H1	H1	H1	H1	H1	H1	H1	H1	H1	H1



CODE	DESCRIPTION
E	MLBF SIGNAL CONTACT, ROW A (3.43)
F	MLBF SIGNAL CONTACT, ROW B (3.43)
G	MLBF SIGNAL CONTACT, ROW C (3.43)
H	MLBF SIGNAL CONTACT, ROW D (3.43)
HI	STD HIGH POWER CONTACT (3.43)
HA	METAL HOLD DOWN

dr	Rainbow Zhan	20140927	projection	MM	size	A3	scale	3:2
eng	Rainbow Zhan	20140907			ecn no.			
chr	Li-Hu	20140906			rel level	Released		
appr	Pai-Ming Zhang	20140907	product family	PwrBlade+	rel level	Released		
			title	7HP + 24S +7HP RA STB HEADER	dwg no.	10106124-E006001	rev	A
www.fci.com			cat. no.		Product - Customer Drw		sheet 2 of 3	



Copyright FCI.

NOTES:

- 1) "FCI", PART NUMBER AND DATE CODE TO BE MARKED ON THIS SURFACE.  
THE MARK CAN BE OMITTED IF THERE IS NOT ENOUGH SPACE ON THIS SURFACE.
- 2) MATERIALS:  
-HOUSING - GLASS FILLED WITH HIGH TEMP THERMOPLASTIC, UL94V-0.  
-SIGNAL CONTACT - COPPER ALLOY.  
-POWER CONTACT - HIGH CONDUCTIVITY COPPER ALLOY.
- 3) PLATING SPECIFICATION REFER TO FCI 10116351
- 4) DENOTES CONNECTOR KEEP OUT ZONE.
- 5) DATUM AND BASIC DIMENSIONS WERE ESTABLISHED BY CUSTOMER.
- 6) ALL HOLE DIAMETERS ARE FINISHED HOLE SIZES.
- 7)  $1.15 \pm 0.025$ MM DRILLED HOLE PLATED WITH 0.00762MM MIN Sn  
OVER 0.0254-0.0762MM Cu PLATING TO ACHIEVE A  $1.02 \pm 0.07$ MM HOLE.
- 8) PRODUCT SPECIFICATION REFER TO FCI GS-12-658.  
APPLICATION SPECIFICATION REFER TO FCI GS-20-141.  
PRODUCT PACKAGED IN TRAYS, REFER TO FCI GS-14-1502.

dr	Rainbow Zhan	20140927	projection	MM	size	A3	scale	3:2
eng	Rainbow Zhan	20140907			ecn no	-	rel level	
chr	Li-Hu	20140906			product family	PwrBlade+	Released	
appr	Pai-Ming Zhang	20140907			eng no	10106124-E006001		rev
			title 7HP + 24S +7HP RA STB HEADER		Product - Customer Drw			sheet 3 of 3



Copyright FCI.