

## Excellent Integrated System Limited

Stocking Distributor

Click to view price, real time Inventory, Delivery & Lifecycle Information:

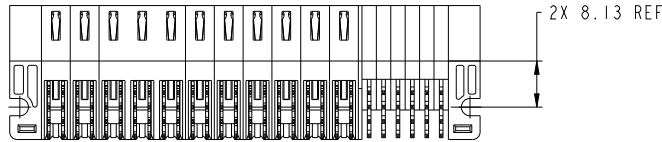
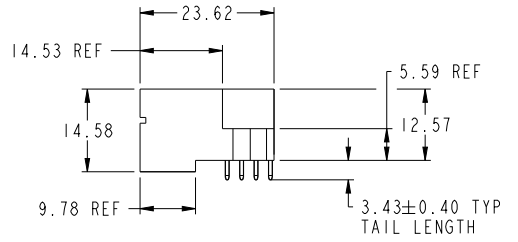
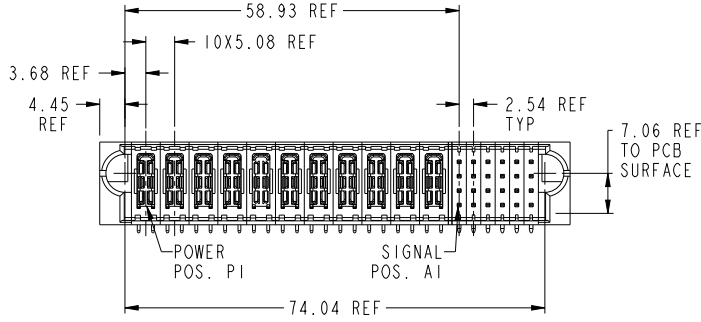
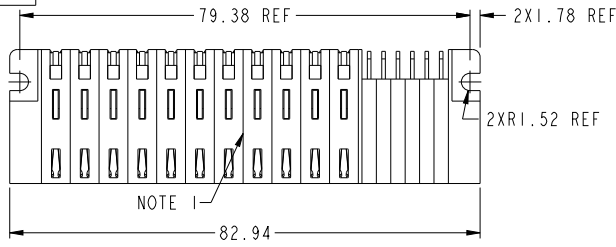
[FCI](#)

[10106132-B006003LF](#)

For any questions, you can email us directly:

[sales@integrated-circuit.com](mailto:sales@integrated-circuit.com)

PRODUCT NUMBER SEE SHEET 2



spec ref	*	dr	Peng-Bing Fu	2012/07/10	projection	MM	size	A3	scale	3:2
tolerance std	ASME Y14.5	TOLERANCES UNLESS OTHERWISE SPECIFIED	eng	Peng-Bing Fu	2013/03/25		ecn no			
surface	linear	0.X ±0.5 0.XX ±0.25 0.XXX ±0.10	chr		2013/03/25		rel level	Released		
	angular	0° ±2°	appr	Pai-Ming Zhang		product family	PwrBlade+			
					title 11HDP + 24S RA STB HEADER		eng no 10106132-B006003	rev A		
www.fci.com			cat. no.		Product - Customer Drw			sheet 1 of 3		

Prod File - REC C - 2009-04-20

1

2

3

PDS: Rev :A

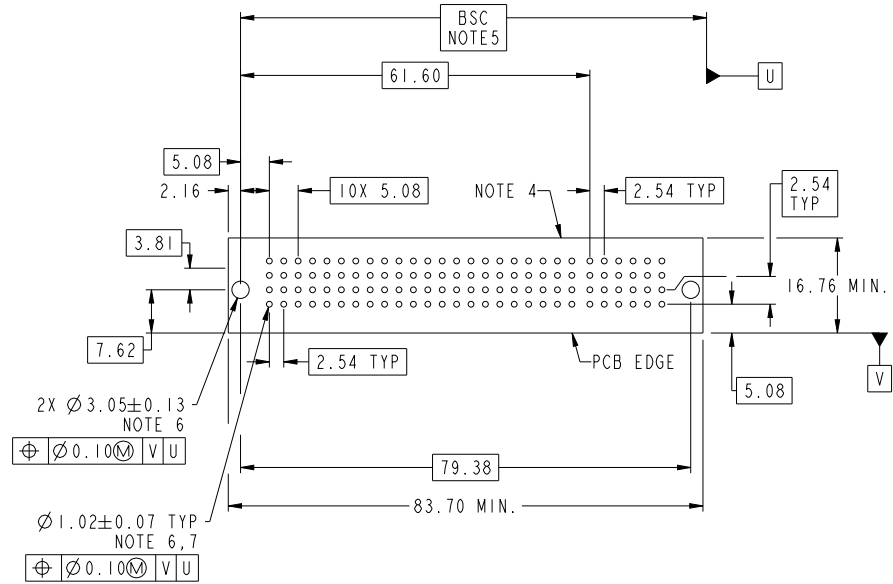
STATUS:Released

Printed: Mar 25, 2013



Copyright FCI.

PRODUCT NO.	ROWS	HIGH POWER										SIGNAL								
		E1	P1	P2	P3	P4	P5	P6	P7	P8	P9	P10	P11	1	2	3	4	5	6	E2
10106132-B006003LF	D C B A	H1	H1	H1	H1	H1	H1	H1	H1	H1	H1	H1	S1	S1	S1	S1	S1	S1	S1	S1



CODE	DESCRIPTION
E	MLBF SIGNAL CONTACT, ROW A (3.43)
HI	STD HIGH POWER CONTACT (3.43)
R	STD SIGNAL CONTACT, ROW A (3.43)
S	STD SIGNAL CONTACT, ROW B (3.43)
T	STD SIGNAL CONTACT, ROW C (3.43)
U	STD SIGNAL CONTACT, ROW D (3.43)

dr	Peng-Bing Fu	2012/07/10	projection	MM	size	A3	scale	3:2
eng	Peng-Bing Fu	2013/03/25		← PwrBlade+ →	ecn no.			
chr					rel level	Released		
appr	Pai-Ming Zhang	2013/03/25	product family	PwrBlade+	cat. no.	10106132-B006003	rev	A
			title 11HDP + 24S RA STB HEADER		Product - Customer Draw		sheet 2 of 3	

NOTES:

- 1) "FCI", PART NUMBER AND DATE CODE TO BE MARKED ON THIS SURFACE.  
THE MARK CAN BE OMITTED IF THERE IS NOT ENOUGH SPACE ON THIS SURFACE.
- 2) MATERIALS:  
-HOUSING - GLASS FILLED WITH HIGH TEMP THERMOPLASTIC, UL94V-0.  
-SIGNAL CONTACT - COPPER ALLOY.  
-POWER CONTACT - HIGH CONDUCTIVITY COPPER ALLOY.
- 3) PLATING SPECIFICATION REFER TO FCI 10116351
- 4) DENOTES CONNECTOR KEEP OUT ZONE.
- 5) DATUM AND BASIC DIMENIONS WERE ESTABLISHED BY CUSTOMER.
- 6) ALL HOLE DIAMETERS ARE FINISHED HOLE SIZES.
- 7)  $1.15 \pm 0.025$ MM DRILLED HOLE PLATED WITH 0.00762MM MIN Sn  
OVER 0.0254-0.0762MM Cu PLATING TO ACHIEVE A  $1.02 \pm 0.07$ MM HOLE.
- 8) PRODUCT SPECIFICATION REFER TO FCI GS-12-658.  
APPLICATION SPECIFICATION REFER TO FCI GS-20-141.  
PRODUCT PACKAGED IN TRAYS, REFER TO FCI GS-14-1502.

dr	Peng-Bing Fu	2012/07/10	projection	MM	size	A3	scale	3:2
eng	Peng-Bing Fu	2013/03/25			ecn no	-	rel level	
chr	-	-			Released			
appr	Pai-Ming Zhang	2013/03/25	product family	PwrBlade+				
			title 11HDP + 24S RA STB HEADER		eng no	10106132-B006003		rev
www.fci.com			cat. no.	Product - Customer Drw		sheet 3 of 3		A



Copyright FCI.