

## Excellent Integrated System Limited

Stocking Distributor

Click to view price, real time Inventory, Delivery & Lifecycle Information:

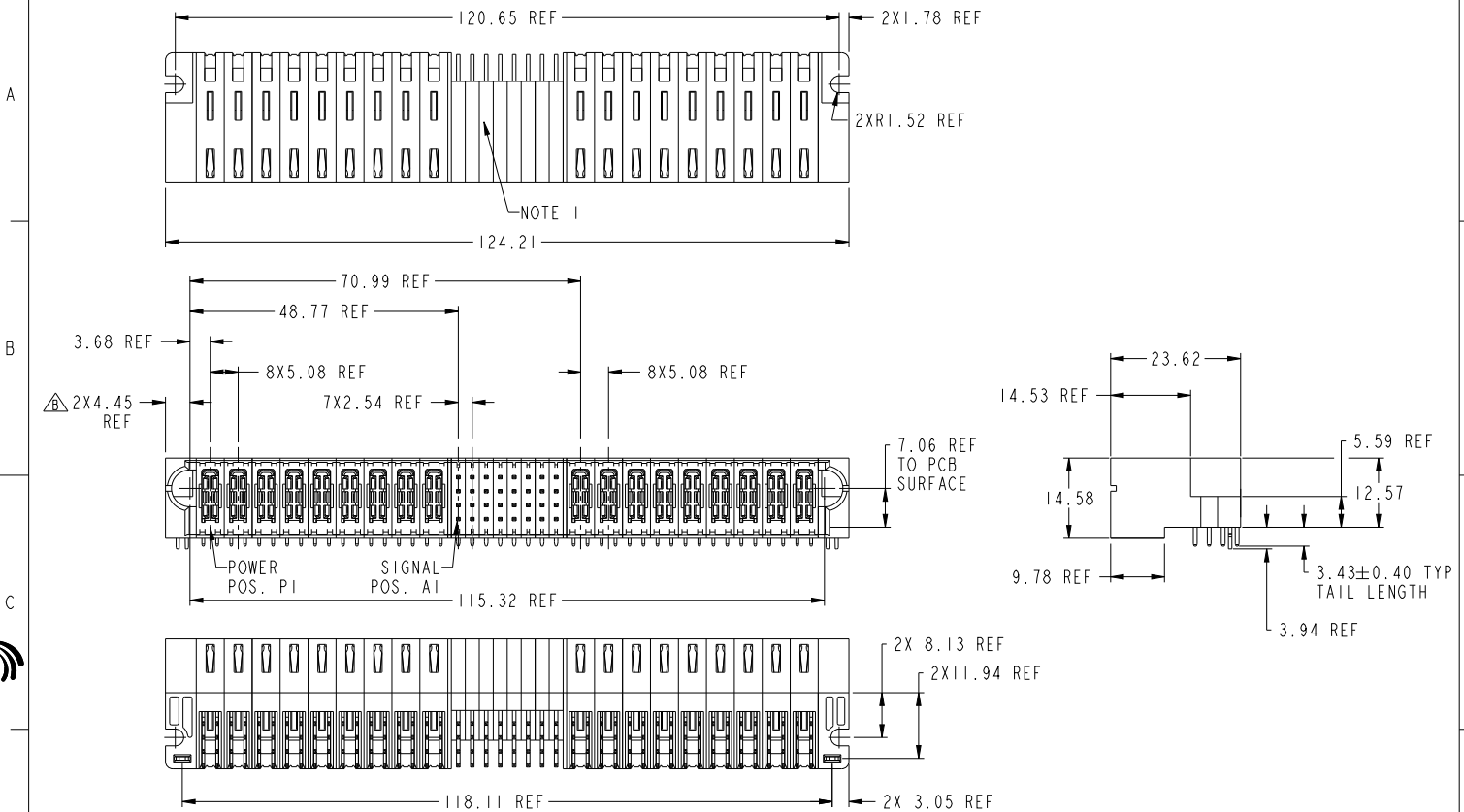
[FCI](#)

[10106132-J008001LF](#)

For any questions, you can email us directly:

[sales@integrated-circuit.com](mailto:sales@integrated-circuit.com)

PRODUCT NUMBER SEE SHEET 2



Copyright FCI

spec ref	*	dr	Peng-Bing Fu	20120426	projection	MM	size	A3	scale	3:2
tolerance std	ASME Y14.5	TOLERANCES UNLESS OTHERWISE SPECIFIED	eng	Peng-Bing Fu	20120105		ecn no	ELX-00-01843-1	rel level	Released
surface	linear	0.X ±0.5	chr	Shao-Qi Kuang	20120105		product family	PwrBlade+	rev	B
	angular	0° ±2°	appr	Pai-Ming Zhang	20120105		cat. no.	10106132-J008001	sheet 1 of 3	

Prod File - REV C - 2009-04-09

1

2

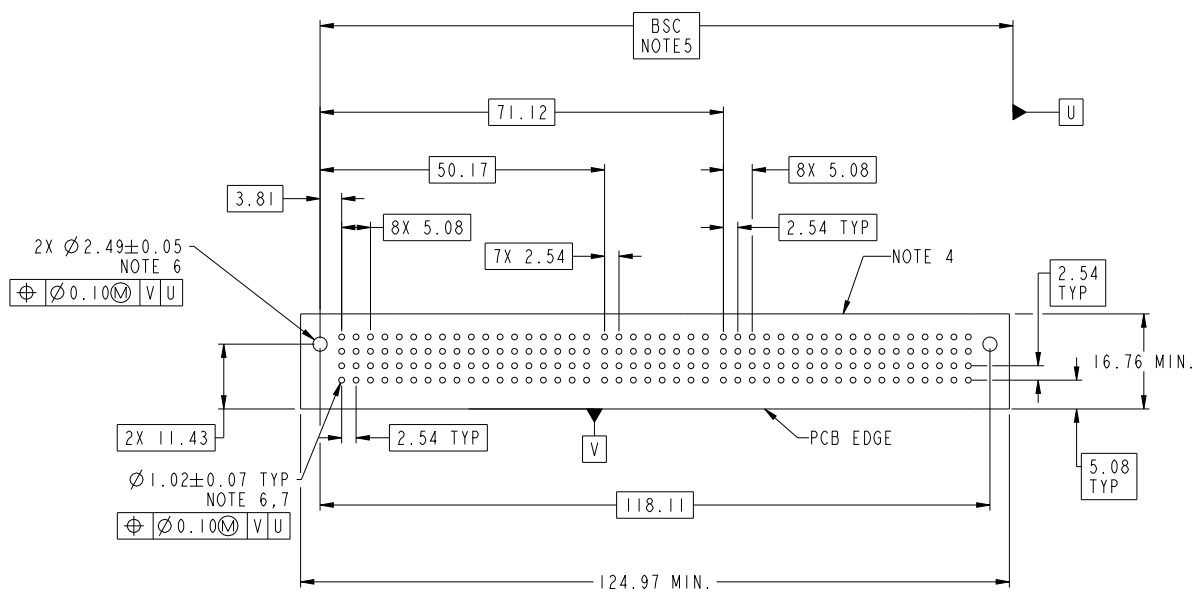
3

PDS: Rev.B

STATUS:Released

Printed: Nov 16, 2012

PRODUCT NO.	ROWS	HIGH POWER								SIGNAL								HIGH POWER										
		E1	P1	P2	P3	P4	P5	P6	P7	P8	P9	1	2	3	4	5	6	7	8	P10	P11	P12	P13	P14	P15	P16	P17	P18
10106132-J008001LF	D C B A	HA	H1	H1	H1	H1	H1	H1	H1	H1	R1	R1	R1	R1	R1	R1	R1	R1	H1	H1	H1	H1	H1	H1	H1	H1	H1	HA



CODE	DESCRIPTION
HI	STD HIGH POWER CONTACT (3.43)
HA	METAL HOLD DOWN
R	STD SIGNAL CONTACT, ROW A (3.43)
S	STD SIGNAL CONTACT, ROW B (3.43)
T	STD SIGNAL CONTACT, ROW C (3.43)
U	STD SIGNAL CONTACT, ROW D (3.43)

dr	Peng-Bing Fu	20120426	projection	MM	size	A3	scale	3:2
eng	Peng-Bing Fu	20121115			ecn no	ELX-00-01843-1	rel level	Released
chr	Shao-Qi Kuang	20121115						
appr	Pai-Ming Zhang	20121115	product family	PwrBlade+	Product - Customer Drw	10106132-J008001	sheet 2 of 3	rev
			title	9HDP + 32S + 9HDP RA STB HEADER	cat. no.			B

Copyright FCI.

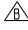
Part Title - HQ C - 2009-04-20



PDS: Rev.B

STATUS: Released

Printed: Nov 16, 2012

NOTES:

- 1) "FCI", PART NUMBER AND DATE CODE TO BE MARKED ON THIS SURFACE.  
THE P/N CAN BE OMITTED IF THERE IS NOT ENOUGH SPACE ON THIS SURFACE.
- 2) MATERIALS:  
-HOUSING - GLASS FILLED WITH HIGH TEMP THERMOPLASTIC, UL94V-0.  
-SIGNAL CONTACT - COPPER ALLOY.  
-POWER CONTACT - HIGH CONDUCTIVITY COPPER ALLOY.
- 3) PLATING SPECIFICATION REFER TO FCI 10116351
- 4) DENOTES CONNECTOR KEEP OUT ZONE.
- 5) DATUM AND BASIC DIMENSIONS WERE ESTABLISHED BY CUSTOMER.
- 6) ALL HOLE DIAMETERS ARE FINISHED HOLE SIZES.
- 7)  $1.15 \pm 0.025$ MM DRILLED HOLE PLATED WITH 0.00762MM MIN Sn  
OVER 0.0254-0.0762MM Cu PLATING TO ACHIEVE A  $1.02 \pm 0.07$ MM HOLE.
- 8) PRODUCT SPECIFICATION REFER TO FCI GS-12-658.  
APPLICATION SPECIFICATION REFER TO FCI GS-20-141.  
PRODUCT PACKAGED IN TRAYS, REFER TO FCI GS-14-1502.
- 9) A  SYMBOL WILL BE NEXT TO ANY DIMENSION, VIEW, OR NOTE WHICH HAS BEEN MODIFIED WITH THE CURRENT DRAWING REVISION.

dr	Peng-Bing Fu	20120406	projection	MM	size	A3	scale	3:2
eng	Peng-Bing Fu	20121115		← PwrBlade+ →	ecn no	ELX-00-018143-1		
chr	Shao-Qi Kuang	20121115			rel level	Released		
appr	Pai-Ming Zhang	20121115	product family	PwrBlade+				
		title		9HDP + 32S + 9HDP		eng no		10106132-J008001
www.fci.com		cat. no.		Product - Customer Drw		sheet		3 of 3
		3		PDS: Rev.B		STATUS:Released		Printed: Nov 16, 2012



Copyright FCI.