

Excellent Integrated System Limited

Stocking Distributor

Click to view price, real time Inventory, Delivery & Lifecycle Information:

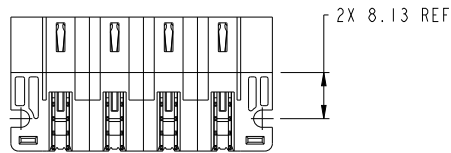
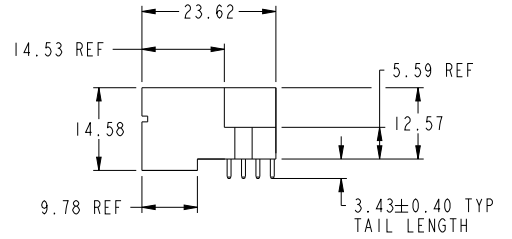
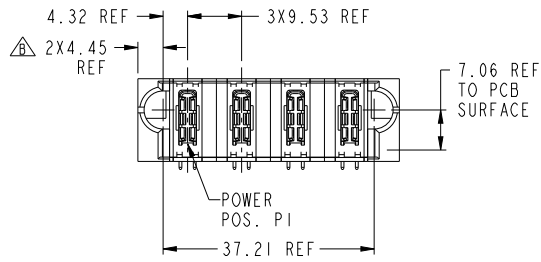
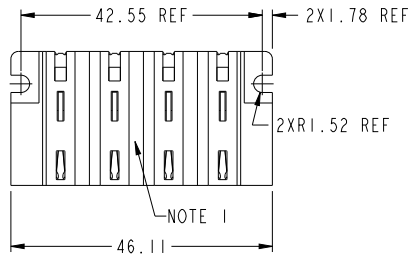
[FCI](#)

[10106262-4000001LF](#)

For any questions, you can email us directly:

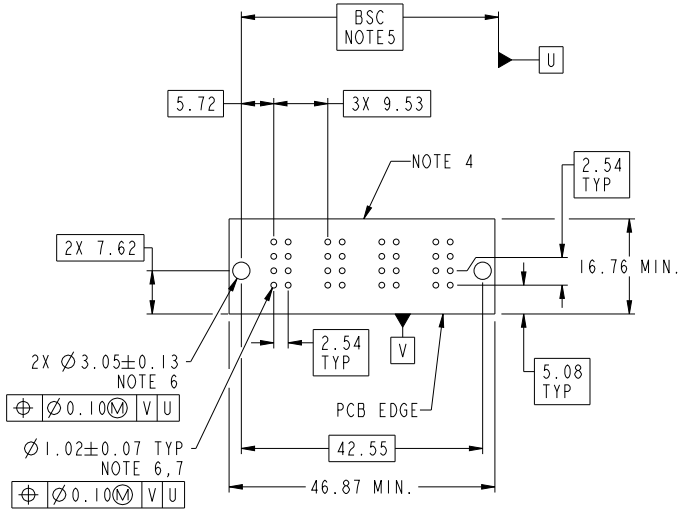
sales@integrated-circuit.com

PRODUCT NUMBER SEE SHEET 2



spec ref	*	dr	Peng-Bing Fu	20120405	projection	MM	size	A3	scale	3:2
tolerance std	ASME Y14.5	TOLERANCES UNLESS OTHERWISE SPECIFIED	eng	Peng-Bing Fu	20120104		ecn no	ELX-00-01843-1		
surface	linear	0.X ±0.5	chr	Shao-Qi Kuang	20120105		rel level	Released		
	angular	0° ±2°	appr	Pai-Ming Zhang	20120105		product family	PwrBlade+		
		www.fci.com			title	4ACP		eng no	10106262-4000001	
					RA STB HEADER	cat. no.	Product - Customer Drw		rev	B
							STATUS:Released		sheet 1 of 3	

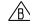
PRODUCT NO.	ROWS	HIGH POWER					
		E1	P1	P2	P3	P4	E2
10106262-4000001LF	D C B A		H1	H1	H1	H1	





CODE	DESCRIPTION
HI	STD HIGH POWER CONTACT (3.43)

dr	Peng-Bing Fu	20120405	projection	MM	size	A3	scale	3:2	
eng	Peng-Bing Fu	20121014		←	ecn no	ELX-00-01843-1			
chr	Shao-Qi Kuang	20121115			rel level	Released			
appr	Pai-Ming Zhang	20121115	product family	PwrBlade+					
			title	4ACP RA STB HEADER		eng no	10106262-4000001	rev	B
www.fci.com			cat. no.	Product - Customer Drw		sheet 2 of 3			

NOTES:

- 1) "FCI", PART NUMBER AND DATE CODE TO BE MARKED ON THIS SURFACE.
THE P/N CAN BE OMITTED IF THERE IS NOT ENOUGH SPACE ON THIS SURFACE.
- 2) MATERIALS:
-HOUSING - GLASS FILLED WITH HIGH TEMP THERMOPLASTIC, UL94V-0.
-SIGNAL CONTACT - COPPER ALLOY.
-POWER CONTACT - HIGH CONDUCTIVITY COPPER ALLOY.
- 3) PLATING SPECIFICATION REFER TO FCI 10116351
- 4) DENOTES CONNECTOR KEEP OUT ZONE.
- 5) DATUM AND BASIC DIMENSIONS WERE ESTABLISHED BY CUSTOMER.
- 6) ALL HOLE DIAMETERS ARE FINISHED HOLE SIZES.
- 7) 1.15 ± 0.025 MM DRILLED HOLE PLATED WITH 0.00762MM MIN Sn
OVER 0.0254-0.0762MM Cu PLATING TO ACHIEVE A 1.02 ± 0.07 MM HOLE.
- 8) PRODUCT SPECIFICATION REFER TO FCI GS-12-658.
APPLICATION SPECIFICATION REFER TO FCI GS-20-141.
PRODUCT PACKAGED IN TRAYS, REFER TO FCI GS-14-1502.
- 9) A  SYMBOL WILL BE NEXT TO ANY DIMENSION, VIEW, OR NOTE WHICH HAS BEEN MODIFIED WITH THE CURRENT DRAWING REVISION.

dr	Peng-Bing Fu	20120402	projection	MM	size	A3	scale	3:2
eng	Peng-Bing Fu	20121014		← PwrBlade+ →	ecn no	ELX-00-018143-1		
chr	Shao-Qi Kuang	20121115			rel level	Released		
appr	Pai-Ming Zhang	20121115	product family	PwrBlade+		rel level	Released	
		title	4ACP RA STB HEADER		eng no	10106262-4000001		rev
www.fci.com		cat. no.	Product - Customer Drw		sheet 3 of 3		B	



Copyright FCI.