

Excellent Integrated System Limited

Stocking Distributor

Click to view price, real time Inventory, Delivery & Lifecycle Information:

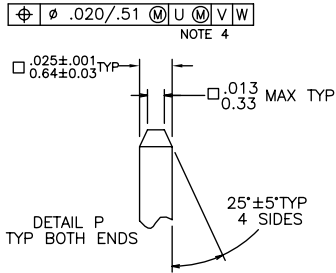
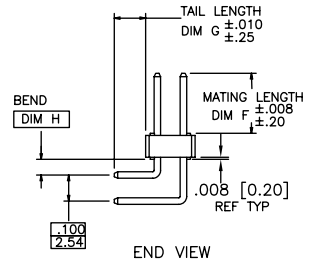
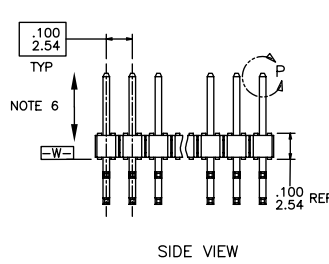
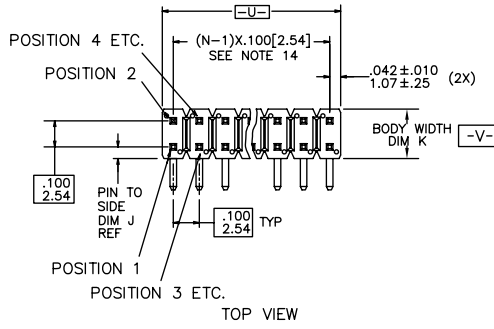
[FCI](#)
[10122297-112003LF](#)

For any questions, you can email us directly:
sales@integrated-circuit.com

PRODUCT NUMBER

10122297-XXX XXX XLF

- LEAD FREE OPTION
SEE NOTE 1,7
- PACKAGING OPTION
SEE NOTE 1
- INDICATE DIFFERENT MATING LENGTH
AND TAIL LENGTH AND POLARIZED PIN
AND OTHER INFORMATION
- NO OF
POSITIONS
SEE NOTE 1
- PIN PLATING
SEE SHEET 2
- BASE PART NO.



mat'l. code	surface	tolerance	projection	product family
NOTES 2 & 3	ISO 1302	ISO 406 ISO 1101	ISO 1101	BERGSTIK
ltr	ecn no	dr	date	title
A	-	DCS	2012/08/02	BERGSTIK® II HEADER
B	ELX-N-14515	ZK	2013/08/05	.100/2.54cc DR R/A
C	ELX-N-16429	ZK	2013/12/04	
D	ELX-N-19199	JH	2014/10/27	dwg no
E	ELX-N-16429	JH	2015/02/12	10122297
		enr	J.ZHOU	2012-12-11
		chr	J.ZHOU	2012-12-11
		appd	Rick Bian	2012-12-11
sheet	revision	E	E	E
index	sheet	1	2	3

STATUS: Released Printed: Mar 11, 2015

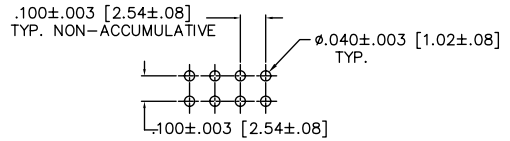
FCI FCIconnect.com Copyright FCI

PIN PLATING CODES:	
10122297-1YY	30u"/0.76u MIN (SEE NOTE 8) OVER 50u"/1.27u MIN Ni
10122297-2YY	15u"/0.38u MIN (SEE NOTE 8) OVER 50u"/1.27u MIN Ni
10122297-3YY	50u"/1.27u MIN (SEE NOTE 8) OVER 50u"/1.27u MIN Ni
10122297-4YY	100u"/2.54u MIN Sn OVER 50u"/1.27u MIN Ni (SEE NOTE 9)

7. THESE PRODUCTS MEETS EUROPEAN UNION DIRECTIVES AND OTHER COUNTRY REGULATION AS DESCRIBED IN GS-22-008.
8. PLATING OPTIONS:
PERFORMANCE PLATING WILL BE EITHER GOLD OR GXT ON POST OR TAIL, OPTIONALLY (78~295u"/2~7.5u) TIN ON TAIL.
- 9."THIS PRODUCT HAS 100% TIN PLATING IN THE INTERFACE AND HAS NOT BEEN TESTED FOR WHISKER GROWTH IN ALL INTERCONNECT ENVIRONMENTS."
10. THE OAL DON'T EXCEED 31mm
OAL= MATTING DIM + TAIL DIM +4.0mm<=31mm "WHERE THE SUM OF TAIL LEGTH DON'T EXCEED 27mm" TAIL
TAIL LENGTH MIN 2.00mm TAIL LENGTH MAX 10.4mm
MATTING LENGTH MIN 1.5mm MATTING LENGTH MAX 25.4mm
11. INCREMENTS BY 0.1mm IN LENGTH ONLY
12. FOR ESPECIAL PACKAGING REQUEST PLEASE CONTACT PRODUCT MANAGER FOR AVAILABILITY
13. BEND DIMENSION AT 1.5mm ONLY
14. TO DETERMINE DIMENSIONS:
N=NUMBER OF POSITION PER ROW
EXAMPLE: 10 POS. N X .100/2.54

NOTES

1. PART NUMBER OPTIONS:
PIN PLATING CODES (SEE ABOVE)
NUMBER OF POSITION:
EVEN NUMBER OF POSITIONS FROM 2 (2X1) THRU 72 (2X36).
PACKAGING:
PACKAGED IN POLY BAGS.
EIGHT DIGIT PART NUMBERS FOLLOWED BY A "T" ARE PACKAGED IN TUBES. SEE SPECIFIC PART NUMBERS FOR AVAILABILITY.
LEAD FREE:
ADD "LF" SUFFIX AT THE END OF PART NUMBER FOR LEAD FREE OPTION.
2. BODY MATERIAL:
HIGH TEMP. MATERIAL:
MANUFACTURER'S OPTION OF NYLON, PCT GLASS FIBER REINFORCED, OR MINERAL FILLED LCP FLAME RETARDENT PER UL-94V-0.
COLOR: BLACK.
PART NUMBERS WILL WITHSTAND EXPOSURE TO 260°C PEAK TEMPERATURE FOR 20 SECONDS IN WAVE SOLDER, INFRA-RED OR VAPOR PHASE SOLDER PROCESS.
3. PIN MATERIAL: COPPER ALLOY.
4. MEASURED WITH PART IN RESTRAINED CONDITION.
5. TWO SIDES OF PIN TIPS NOT PLATED. TYPICAL BOTH ENDS.
6. 2LBS/0.9KG MIN PIN RETENTION IN EITHER DIRECTION.



RECOMMENDED HOLE PATTERN

mat'l. code		surface		tolerance		projection		product family	
NOTES 2 & 3		ISO 1302		ISO 406		ISO 1101		BERGSTIK	
ltr	ecn	no	dr	date		tolerances unless otherwise specified		title	
E						angles $\frac{XXX}{YYY}/\frac{ZZZ}{AAA}$ linear $\frac{XXXX}{YYYY}/\frac{ZZZZ}{AAAA}$ 0??? $\frac{XXXXXX}{YYYYYY}/\frac{ZZZZZZ}{AAAAAA}$		BERGSTIK® II HEADER	
						INCH/MM		.100/2.54cc DR R/A	
						scale 1:1		sheet 2 of 3 size	
				dr J.ZHOU 2012-12-11		FCI		10122297	
				enrg J.ZHOU 2012-12-11				A3	
				chr J.ZHOU 2012-12-11				type Product Customer Drawing	
				appd Rick Blon 2012-12-11					
sheet index		revision sheet							

FCI FCIconnect.com Copyright FCI

PRODUCT NUMBER	MATING LENGTH		TAIL LENGTH		BEND DIM		PIN TO SIDE		BODY WIDTH		POLARIZED PIN	LF
	DIM F	DIM F	DIM G	DIM G	DIM H	DIM H	DIM J	DIM J	DIM K	DIM K		
	ENGLISH	METRIC	ENGLISH	METRIC	ENGLISH	METRIC	ENGLISH	METRIC	ENGLISH	METRIC		
10122297-XYY001LF	0.230	5.84	0.120	3.05	0.060	1.52	0.045	1.14	0.190	4.83	2,12	NOTE 1,7
10122297-XYY002LF	0.230	5.84	0.120	3.05	0.060	1.52	0.045	1.14	0.190	4.83	5	
10122297-XYY003LF	0.138	3.51	0.138	3.51	0.060	1.52	0.045	1.14	0.190	4.83	5,6,9,10	
10122297-XYY004LF	0.138	3.51	0.138	3.51	0.060	1.52	0.045	1.14	0.190	4.83	5,6,17,18,21,22	
10122297-XYY005LF	0.230	5.84	0.120	3.05	0.060	1.52	0.045	1.14	0.190	4.83	5,6,15,16	
10122297-XYY006LF	0.138	3.51	0.138	3.51	0.060	1.52	0.045	1.14	0.190	4.83	3,4,7,8	
10122297-XYY007LF	0.230	5.84	0.120	3.05	0.060	1.52	0.045	1.14	0.190	4.83	1	
10122297-X26008LF	0.230	5.84	0.095	2.41	0.060	1.52	0.045	1.14	0.190	4.83	3,4,7,8,11,12,15~20	
10122297-XYY009LF	0.230	5.84	0.095	2.41	0.060	1.52	0.045	1.14	0.190	4.83	3	
10122297-XYY010LF	0.230	5.84	0.120	3.05	0.060	1.52	0.045	1.14	0.190	4.83	1,2,12	



Copyright FCI

mat'l. code		surface		tolerance		projection		product family	
NOTES 2 & 3		ISO 1302		ISO 406		FIRST ANGLE		BERGSTIK	
E		angles		tolerances unless otherwise specified		INCH/MM		title	
		0???		linear		scale 1:1		BERGSTIK® II HEADER	
		dr		J.ZHOU		2012-12-11		.100/2.54cc DR R/A	
		enrg		J.ZHOU		2012-12-11		dwg no	
		chr		J.ZHOU		2012-12-11		10122297	
		appd		Rick Blon		2012-12-11		sheet 3 of 3 size	
sheet index		revision sheet						A3	
								type Product Customer Drawing	