

Excellent Integrated System Limited

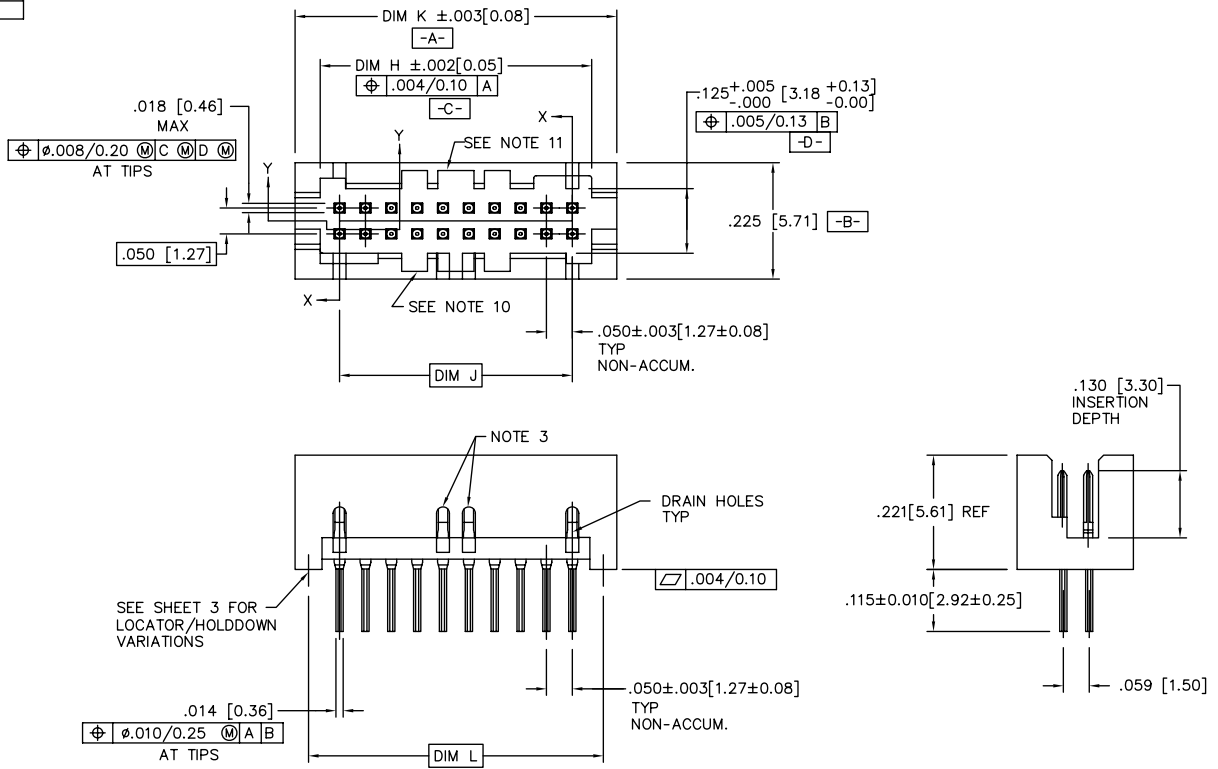
Stocking Distributor

Click to view price, real time Inventory, Delivery & Lifecycle Information:

[FCI](#)
[10124053-01-150LF](#)

For any questions, you can email us directly:
sales@integrated-circuit.com

PRODUCT NUMBER
SEE TABLE

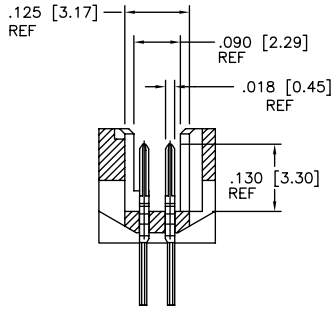


SEE SHEET 3 FOR
LOCATOR/HOLDDOWN
VARIATIONS

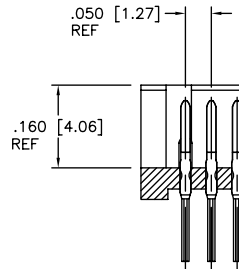
mat'l. code	surface	tolerance	projection	product family
-	ISO 1302	ISO 406	ISO 1101	RIBCAGE
ltr	ecn	no	dr	date
A	-	GM	2013-01-15	
B	ELX-N-14348	GM	2013-03-27	
-	-	-	-	0°±2'
-	-	-	-	linear
-	-	-	-	scale 4:1
-	-	-	-	dr
-	-	-	-	enr
-	-	-	-	chr
-	-	-	-	appd
-	-	-	-	
sheet	revision	B	B	B
index	sheet	1	2	3

title
RIBCAGE III T/M
VERT. HEADER ASS'Y
sheet 1 of 3 size
10124053
type Product Customer Drawing

SIZE	DIM H	DIM J	DIM K	DIM L
2X5	.275/6.99	.200/5.08	.372/9.45	.320/8.13
2X10	.525/13.34	.450/11.43	.622/15.80	.570/14.48
2X15	.775/19.68	.700/17.78	.872/22.15	.820/20.83
2X20	1.025/26.03	.950/24.13	1.122/28.50	1.070/27.18
2X25	1.275/32.38	1.200/30.48	1.372/34.85	1.320/33.53
2X30	1.525/38.74	1.450/36.83	1.622/41.20	1.570/39.88
2X35	1.775/45.08	1.700/43.18	1.872/47.55	1.820/46.23
2X40	2.025/51.43	1.950/49.53	2.122/53.90	2.070/52.58
2X45	2.275/57.78	2.200/55.88	2.372/60.25	2.320/58.93
2X50	2.525/64.14	2.450/62.23	2.622/66.60	2.570/65.28



SECTION X-X
ROTATED 90° CW



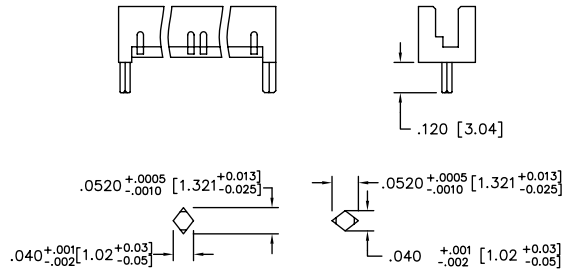
SECTION Y-Y

mat'l. code		surface	tolerance	projection	product family
-		ISO 1302	ISO 406		RIBCAGE
B		tolerances unless otherwise specified		title	
		angles	.XX±.01/0.3	RIBCAGE III T/M	
		linear	.XXXX.005/0.13	VERT. HEADER ASS'Y	
		0°±2°	.XXXXX.0020/0.051	scale 4:1	
		dr	GM SUN 2013-01-15	FCI	
		enrg	GM SUN 2013-01-15	dwg no	
		chr	RICK BIAN 2013-01-15	sheet 2 of 3 size	
		appd	RICK BIAN 2013-01-15	10124053	
				type Product Customer Drawing	
sheet index	revision sheet				

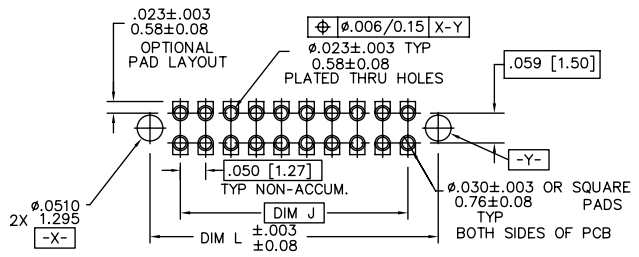
FCI
FCIconnect.com
Copyright FCI

NOTES:

1. 10124053-01-1XXLF
LEAD FREE OPTION (NOTE 7,8)
NUMBER OF POSITIONS (NOTE 2)
2. NUMBER OF POSITIONS = 05 THRU 50 IN 5 POS INCREMENTS.
(EXAMPLE: 105=10 POS., 110=20 POS. ETC.)
3. REQUIRED ON -X40,-X45 & -X50 POSITION PARTS ONLY.
4. PACKAGE PER BUS-14-179.
5. HOUSING MATERIAL:
GLASS FILLED THERMOPLASTIC FLAME RETARDANT
PER UL 94V-0.
COLOR: NATURAL
6. TERMINAL PLATING:
30u" MIN GOLD OVER 50u" Ni ON CONTACT ZONES.
GOLD FLASH OVER 50u" Ni ON OTHERWISE ALL ZONES.
7. ADD "LF" SUFFIX AT THE END OF PART NUMBER FOR
LEAD FREE OPTION.
8. THIS PRODUCT MEETS EUROPEAN UNION DIRECTIVES AND OTHER
COUNTRY REGULATION AS DESCRIBED IN GS-22-008.
9. THE HOUSING WILL WITHSTAND EXPOSURE TO 260°C PEAK TEMPERATURE
FOR 15 SECONDS IN A WAVE SOLDER APPLICATION WITH A 1.5mm
MINIMUM THICK CIRCUIT BOARD. SEE APPLICATION NOTES/PROCEDURES
IF THEY ARE AVAILABLE.
10. MOLDING FLOW RESTRICTOR QUANTITY AND LOCATION IS
MANUFACTURING OPTION.
11. VACUUM CAP SLOT REQUIRED ON ALL SIZES, SLOT MAY
BE LOCATED ON OPPOSITE SIDE FOR 2 X 5.
12. PRODUCT SPECIFICATION PER BUS-12-087.



LOCATOR/HOLDDOWN
VARIATIONS



RECOMMENDED P. C. B. LAYOUT

mat'l. code		surface		tolerance		projection		product family	
		ISO 1302		ISO 406		ISO 1101		RIBCAGE	
ltr		ecn		no		dr		date	
B									
				tolerances unless otherwise specified		INCH/MM		title	
				.XX±.01/0.3		linear		RIBCAGE III T/M	
				.XXXX±.005/0.13		scale 4:1		VERT. HEADER ASS'Y	
				0'±2'				FCI	
				dr		GM SUN		2013-01-15	
				enrg		GM SUN		2013-01-15	
				chr		RICK BIAN		2013-01-15	
				appd		RICK BIAN		2013-01-15	
sheet		revision						dwg no	
index		sheet						10124053	
								sheet 3 of 3 size	
								type Product Customer Drawing	