

Excellent Integrated System Limited

Stocking Distributor

Click to view price, real time Inventory, Delivery & Lifecycle Information:

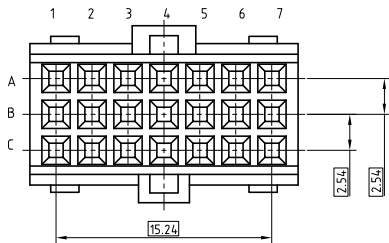
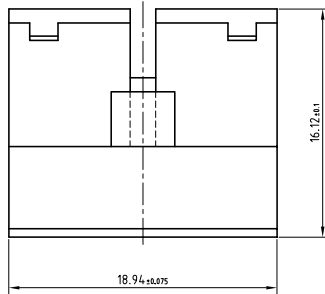
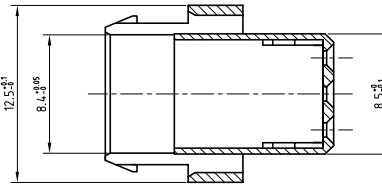
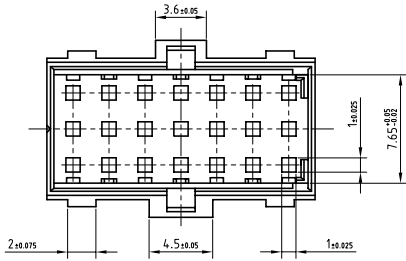
[FCI](#)

[68341-001LF](#)

For any questions, you can email us directly:

sales@integrated-circuit.com

PRODUCT NUMBER 68341-001



NOTES

1. THIS PRODUCT MEETS EUROPEAN UNION DIRECTIVES AND OTHER COUNTRY REGULATIONS AS DESCRIBED IN GS-22-008
2. LEADFREE OR RoHS DIRECTIVE LABELLING TO BE PROVIDED AS PER GS-14-920
3. "LF" SUFFIX TO THE PRODUCT NUMBER FOR RoHS COMPATIBLE / LEADFREE VERSION
4. PARTS WITH AND WITHOUT "LF" SUFFIX ARE FORM FIT AND FUNCTIONALLY IDENTICAL
"LF" SUFFIX PROVIDED FOR PART NUMBER STANDARDISATION OF PART THAT MEETS RoHS REQUIREMENTS
5. FOR TECHNICAL APPLICATION SEE TA565.
6. HOUSING MATERIAL - THERMOPLASTIC POLYESTER; 30% GLASS FILLED ; UL-94-V0; COLOUR : GREY

mat'l. code		SEE NOTES		surface	tolerance	projection	product family	
ISO 1302	ISO 406	ISO 1101	tolerances unless otherwise specified	mm	mm	BACKPANEL		
ltr	ecn no	dr	date	angles	linear	title		
A	108-0019	KR	2008-02-02	0°±'	mm	CTW HOUSING 3 X 7 POS.		
						scale	3:1	
						dr	KESAVAN/R	
						emgr	KESAVAN/R	
						chr	KESAVAN/R	
						appd	BJAJK.PAUL	
sheet index		revision sheet	A 1			type		
						Product Customer Drawing		
						dwg no 68341 sheet 1 of 1 size A3		