

Excellent Integrated System Limited

Stocking Distributor

Click to view price, real time Inventory, Delivery & Lifecycle Information:

[CTS Electronic Components](#)

[CER0202A](#)

For any questions, you can email us directly:

sales@integrated-circuit.com



CER0202A

2140 MHz Monoblock LR Series BPF

Rev 2 – Origin Date: July 11, 2005 – Revision Date: August 1, 2005

Features

- Low Ripple
- High Rejection
- Low Loss

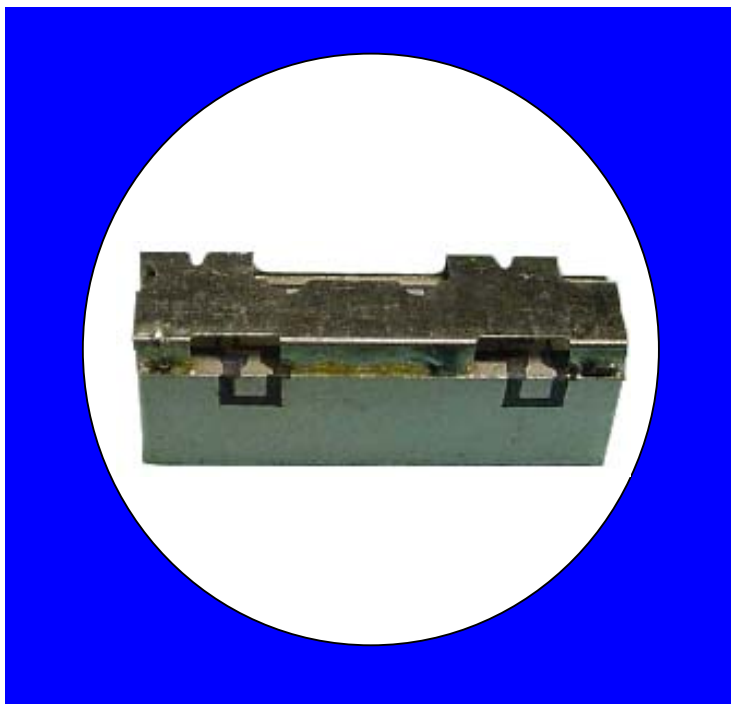
Description

Surface mount, silver (Ag) coated ceramic filter. Developed for use in W-CDMA repeater and base station applications, CTS Monoblock LR Series Filters are designed to minimize ripple and maximize rejection.

Weight: 4.7 grams typical

Material: Filter is composed of a ceramic block coated with Ag and a shield made of nickel silver plated steel.

Filter complies with RoHS standards.



Electrical Specifications

Parameter	Frequency (MHz)	Typical @ 25°C	Specification @ 25C	Spec. over -40°C to +85°C
Passband Insertion Loss	2110 – 2170	1.9	2.2 dB	2.5 dB
Passband Ripple	2110 – 2170	0.5	0.8 dB	1.0 dB
Passband Return Loss	2110 – 2170	12.5	10.0 dB	10.0 dB
Attenuation:	2090	18.0	15.0 dB	15.0 dB
	2190	18.0	15.0 dB	15.0 dB
	1920 - 1980	40.0	35.0 dB	35.0 dB
Power into any port		2 Watt max.		

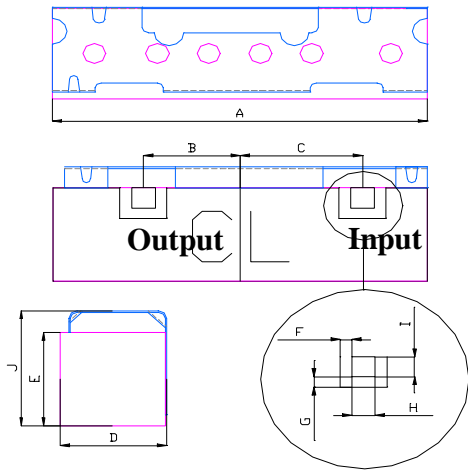
Note: Supplier shall test each filter to the critical electrical specifications of the above table. Any subsequent audits may deviate from in value due to measurement repeatability among different test systems. Such deviations shall not exceed the following limits:

Specification Allowance	
Insertion Loss	0.1 dB
Return Loss	1.0 dB
Stopbands	1.0 dB

*This product is covered by one or more of the following U.S. and foreign patents including: US 4,692,726;US 4,742,562; US 4,800,348;US 4,829,274;US 5,146,193;EP 0573597;DE 0573597;FR 0573597;JP 508149/92;KR 142171;US 5,162,760;US 5,218,329;US 5,250,916;US 5,327,109;US 5,488,335;CA 2114029;FR 9306297;GB 2273393;JP 3205337;KR 115113;CN 93106228.4;US 5,512,866;EP 0706719;DE 0706719;FR 0706719;GB 0706719;CN 95190359.4;US 5,602,518;US 5,721,520;US 5,745,018;EP 0910875;DE 0910875;DK 0910875;FR 0910875;GB 0910875;E 0910875;JP 505182/98;KR 10-323013;US 5,994,978;US 6,462,629;CN 00810420.4;US 6,559,735;US 6,650,202;US 6,834,429. Other US and foreign patents pending.

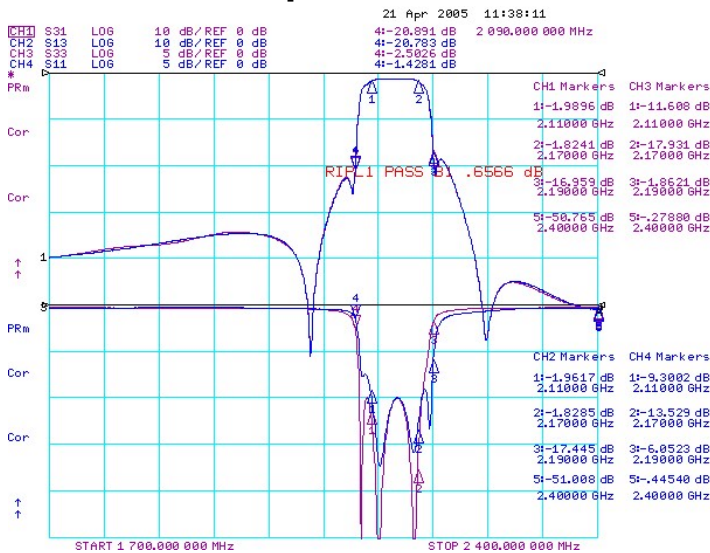
CTS Corporation 2006 reserves all copyrights in the layout, design and configuration of the patterns on this product.

Mechanical Drawing

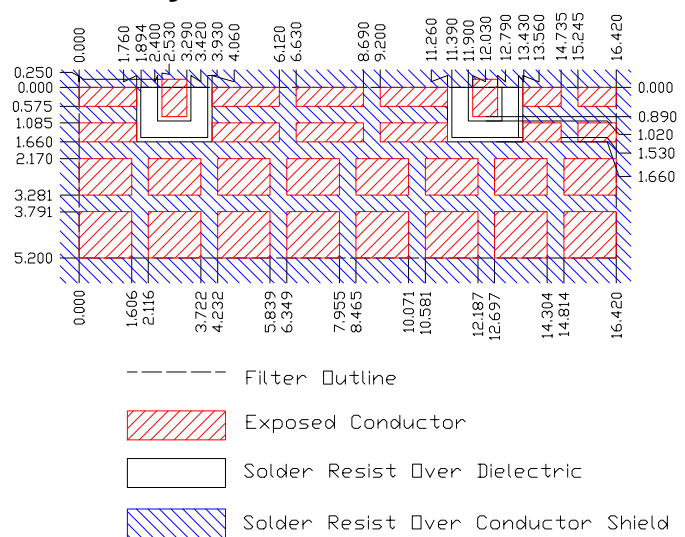


Dim	Nominal (mm)	Tolerance (mm) +/- or max
A	16.42	max
B	4.2	0.13
C	5.3	0.13
D	4.85	max
E	5.2	max
F	0.51	0.13
G	0.51	0.13
H	1.02	0.13
I	1.02	0.13
J	6.3	max

Electrical response

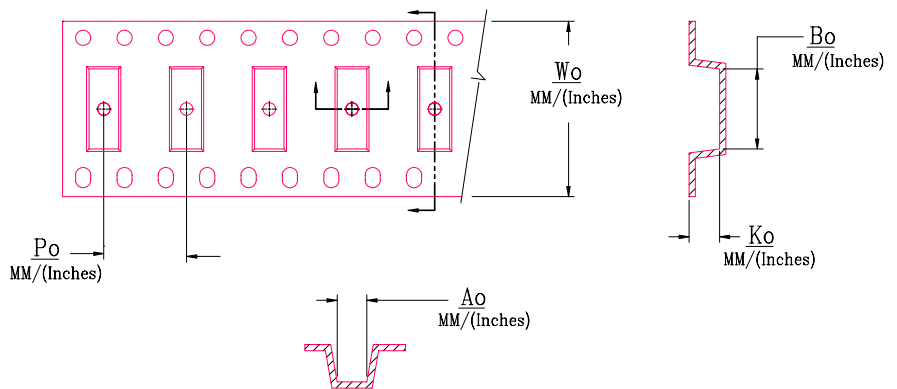


PCB Layout



Packaging and Marking

DIMENSION	UNITS	SPECIFICATION
REEL DIAMETER	mm	330
REEL WEIGHT	kg	3.1
REEL QUANTITY	ea.	500



MODEL_NO.	Wo	Ao	Bo	Ko	Po
CER0202	24.0/(0.945)	6.50/(0.256)	16.7/(0.657)	5.10/(0.201)	12.0/(0.472)