

Excellent Integrated System Limited

Stocking Distributor

Click to view price, real time Inventory, Delivery & Lifecycle Information:

[CTS Electronic Components](#)

[KFF6516A](#)

For any questions, you can email us directly:

sales@integrated-circuit.com



KFF6516A

1090 Mhz TCAS BPF

Rev 0 – Origin Date: July 11, 2005 – Revision Date: July 11, 2005

Features

- Low Loss
- Excellent Return Loss
- High Rejection

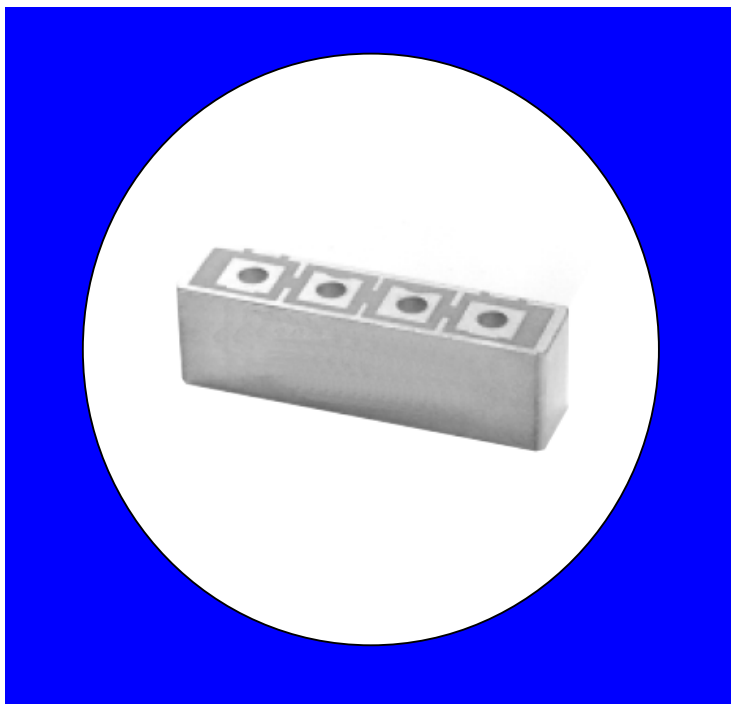
Description

Surface mount, silver (Ag) coated ceramic filter. Developed for use in TCAS applications.

Weight: 10.8 grams typical

Material: Filter is composed of a ceramic block plated with Ag.

Filter complies with RoHS standards.



Electrical Specifications

Parameter	Frequency (MHz)	Typical @ 25°C	Spec. @ 25°C
Passband Insertion Loss	1087-1093	2.45 dB	2.75 dB max
Passband Return Loss	1087-1093	16.0 dB	12.0 dB min
Attenuation	1065	31.0 dB	30.0 dB min
Attenuation	1075	16.0 dB	15.0 dB min
Attenuation	1080	6.0 dB	5.0 dB min
Attenuation	1100	11.0 dB	10.0 dB min
Attenuation	1105	23.6 dB	20.0 dB min
Attenuation	1115	32.0 dB	30.0 dB min
Power Rating			1W
Impedance			50 Ω

Note: Supplier shall test each filter to the critical electrical specifications of the above table. Any subsequent audits may deviate from in value due to measurement repeatability among different test systems. Such deviations shall not exceed the following limits:

Specification Allowance	
Insertion Loss	0.1 dB
Return Loss	1.0 dB
Stopbands	1.0 dB

*This product is covered by one or more of the following U.S. and foreign patents including: US 4,692,726;US 4,742,562; US 4,800,348;US 4,829,274;US 5,146,193;EP 0573597;DE 0573597;FR 0573597;JP 508149/92;KR 142171;US 5,162,760;US 5,218,329;US 5,250,916;US 5,327,109;US 5,488,335;CA 2114029;FR 9306297;GB 2273393;JP 3205337;KR 115113;CN 93106228.4;US 5,512,866;EP 0706719;DE 0706719;FR 0706719;GB 0706719;CN 95190359.4;US 5,602,518;US 5,721,520;US 5,745,018;EP 0910875;DE 0910875;DK 0910875;FR 0910875;GB 0910875;JE 0910875;JP 505182/98;KR 10-323013;US 5,994,978;US 6,462,629;CN 00810420.4;US 6,559,735;US 6,650,202;US 6,834,429. Other US and foreign patents pending.

CTS Corporation 2006 reserves all copyrights in the layout, design and configuration of the patterns on this product.

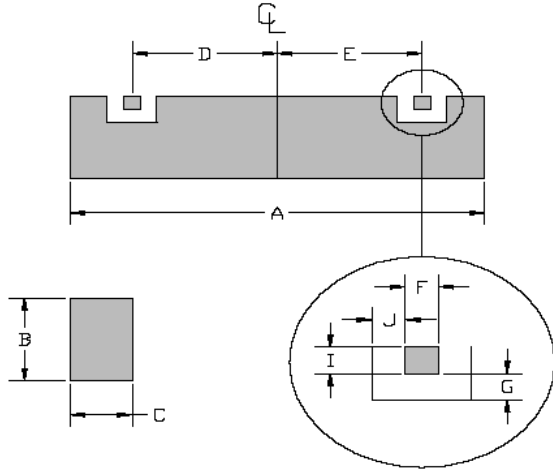


KFF6516A

1090 Mhz TCAS BPF

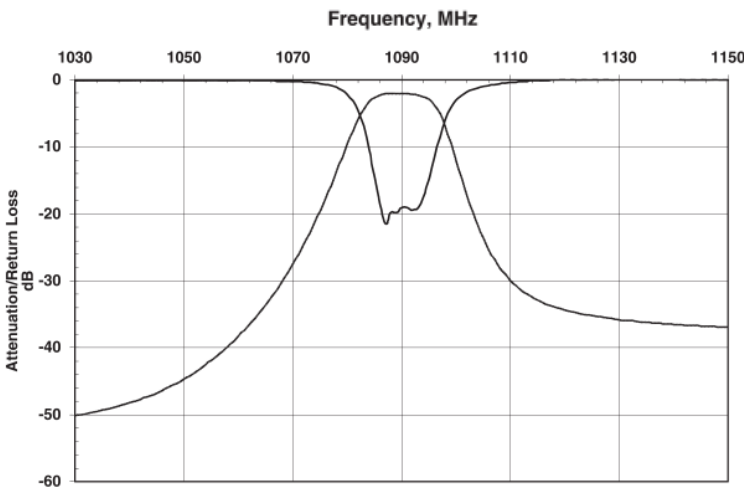
Rev 0 – Origin Date: July 11, 2005 – Revision Date: July 11, 2005

Mechanical Drawing

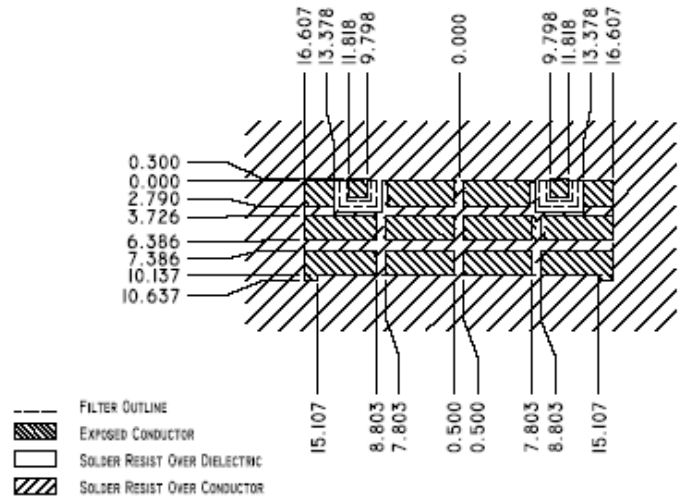


Dim	Nominal (mm)	Tolerance (mm) +/- or max
A	33.580	max
B	10.363	max
C	7.850	max
D	10.808	0.127
E	10.808	0.127
F	2.616	0.127
G	0.762	0.127
I	2.286	0.127
J	0.762	0.127

Electrical response

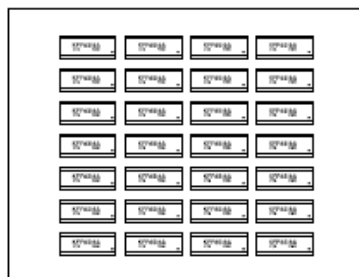
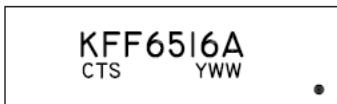


PCB Layout



Packaging and Marking

This product is shipped in pre-formed foam trays.



10 28 Slot Foam Trays

(280 per box)