

Excellent Integrated System Limited

Stocking Distributor

Click to view price, real time Inventory, Delivery & Lifecycle Information:

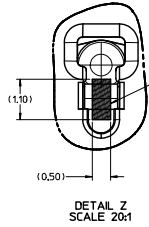
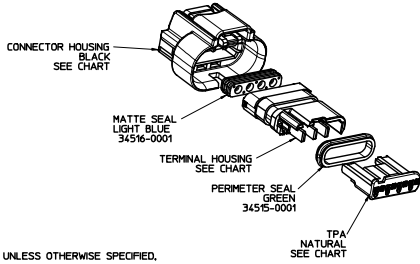
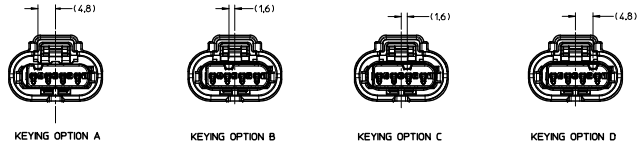
[Molex Connector Corporation](#)
[0345111001](#)

For any questions, you can email us directly:

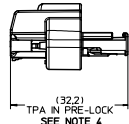
sales@integrated-circuit.com

20 19 18 17 16 15 14 13 12 11 34511 9 8 7 6 5 4 3 2 1

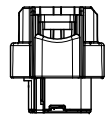
ASSEMBLY PART NO.	TPA PART NO.	CONNECTOR HOUSING NO.	TERMINAL HOUSING		KEYING OPTION	NUMBER OF PLUGGED POSITIONS	CAVITY STATUS (X = PLUGGED)				TOOLED
			PART NUMBER	COLOR			1	2	3	4	
3451H-1001	34514-0001	34512-0001	34513-0001	BLACK	A	0					X
3451H-1002	34514-0002	34512-0001	34513-0002	LIGHT GRAY	B	0					
3451H-1003	34514-0003	34512-0001	34513-0003	BROWN	C	0					
3451H-1004	34514-0004	34512-0001	34513-0004	DARK GRAY	D	0					
3451H-1011	34514-0001	34512-0002	34513-0001	BLACK	A	2	X	X			X



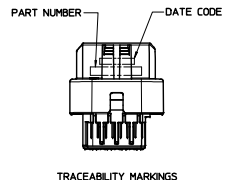
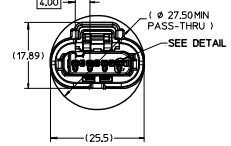
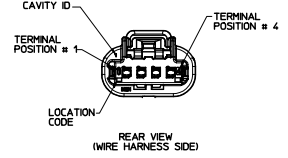
DETAIL Z SCALE 20:1



TPA IN PRE-LOCK SEE NOTE 4



TPA IN FINAL LOCK SEE NOTE 4



NOTES: UNLESS OTHERWISE SPECIFIED,

- MATERIAL: PLASTIC: GLASS FILLED SPS RESIN; SEALS: SILICONE
- FOR RECEPTACLE TERMINAL TO BE USED WITH THIS ASSEMBLY SEE MOLEX DRAWING SD-331608-001. TERMINAL BOX AND CRIMP SHOULD BE PARALLEL TO EACH OTHER WITHIN ONE DEGREE (°) TO PREVENT TERMINAL STUBBING.
- DESIGNED TO MATE WITH HIRSCHMANN DRAWING 872-975-XXX VARIANTE 1 WITH FORM 1 BLADES ON DRAWING 1 99 51 50733 1.
- ASSEMBLY SHIPPED WITH TPA IN PRE-LOCK POSITION. EACH TPA MUST BE SNAPPED INTO FINAL LOCK POSITION UPON FULL TERMINAL ASSEMBLY.
- SYSTEM TO BE USED WITH SAE 18 AWG, 20 AWG AND 22 AWG WIRES WITH DIAMETERS IN THE RANGE OF 1.5 MM TO 2.13 MM.
- TO PREVENT TERMINAL BEAM DAMAGE, USE RECTANGULAR FLAT TIPPED PROBES FOR TERMINAL PROBING.
- TPA FORCES: A, ENGAGEMENT FORCE - WITH TERMINALS (PRE-LOCK TO FINAL-LOCK): 70 N MAX; B, DISENGAGEMENT FORCE - WITH TERMINALS (FINAL-LOCK TO PRE-LOCK): 15N MIN
- FOR RECYCLING INFORMATION CONTACT MOLEX.
- SHALL CONFORM TO THE FOLLOWING PACKAGING SPECIFICATION NUMBER: PK-31300-163
- FINISHED ASSEMBLIES TO BE MARKED WITH DATE CODE AND PART NUMBER.
- TPA'S MAY BECOME SEATED DURING TRANSIT, IF THIS OCCURS, TPA'S SHOULD BE MOVED TO THE PRE-LOCKED POSITION PRIOR TO FEMALE TERMINAL INSTALLATION.
- FORCE TO BE APPLIED TO SECONDARY LOCK FOR CAVITY DAMAGE SUSCEPTIBILITY TESTING (USCAR 5.4.9) TO BE 60 N.



EC NO: UA0206-0517 CHKS: MEZK 2006/04/10 APPR: S.MARCEAU 2006/04/10 REV:	QUALITY SYMBOLS	GENERAL TOLERANCES (UNLESS SPECIFIED)	SCALE 2:1	DESIGN UNITS METRIC	THIRD ANGLE PROJECTION	REVISE ON CAD ONLY																													
	0 0	<table border="1"> <tr> <th></th> <th>mm</th> <th>INCH</th> </tr> <tr> <td>4 PLACES</td> <td>± 0.10</td> <td>± 0.004</td> </tr> <tr> <td>3 PLACES</td> <td>± 0.15</td> <td>± 0.006</td> </tr> <tr> <td>2 PLACES</td> <td>± 0.20</td> <td>± 0.008</td> </tr> <tr> <td>1 PLACE</td> <td>± 0.30</td> <td>± 0.012</td> </tr> </table>		mm	INCH	4 PLACES	± 0.10	± 0.004	3 PLACES	± 0.15	± 0.006	2 PLACES	± 0.20	± 0.008	1 PLACE	± 0.30	± 0.012	<table border="1"> <tr> <th colspan="2">DIMENSION STYLE</th> </tr> <tr> <td>MM ONLY</td> <td>DATE</td> </tr> <tr> <td>DRAWN BY</td> <td>022004</td> </tr> <tr> <td>CHECKED BY</td> <td>DATE</td> </tr> <tr> <td>B.FLOWER</td> <td>022004</td> </tr> <tr> <td>APPROVED BY</td> <td>DATE</td> </tr> <tr> <td>S.MARCEAU</td> <td>022004</td> </tr> </table>	DIMENSION STYLE		MM ONLY	DATE	DRAWN BY	022004	CHECKED BY	DATE	B.FLOWER	022004	APPROVED BY	DATE	S.MARCEAU	022004	TITLE		
		mm	INCH																																
	4 PLACES	± 0.10	± 0.004																																
3 PLACES	± 0.15	± 0.006																																	
2 PLACES	± 0.20	± 0.008																																	
1 PLACE	± 0.30	± 0.012																																	
DIMENSION STYLE																																			
MM ONLY	DATE																																		
DRAWN BY	022004																																		
CHECKED BY	DATE																																		
B.FLOWER	022004																																		
APPROVED BY	DATE																																		
S.MARCEAU	022004																																		
DRAFT WHERE APPLICABLE MUST REMAIN WITHIN DIMENSIONS		THIS DRAWING CONTAINS INFORMATION THAT IS PROPRIETARY TO MOLEX INCORPORATED AND SHOULD NOT BE USED WITHOUT WRITTEN PERMISSION		CONNECTOR ASSEMBLY 4 CKT 1.2 MM SEALED	MATERIAL NO. SEE CHART	DOCUMENT NO. SD-34511-001																													

19 18 17 16 15 14 13 12 11 10 9 8 7 6 5 4 3 2 1