

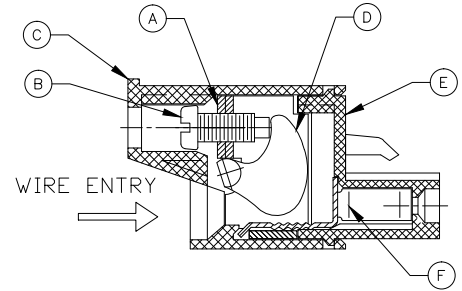
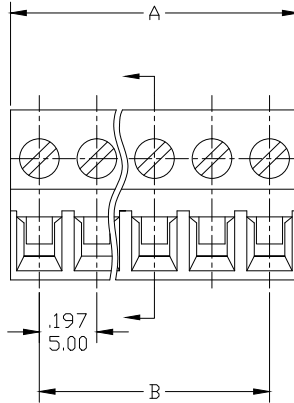
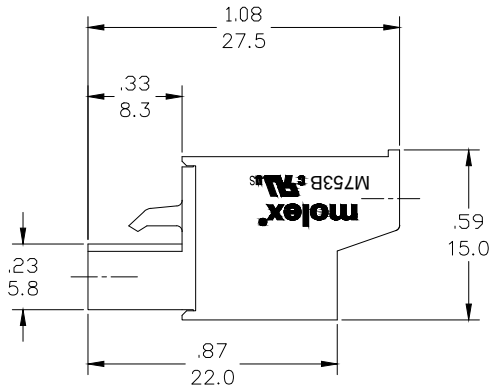
Excellent Integrated System Limited

Stocking Distributor

Click to view price, real time Inventory, Delivery & Lifecycle Information:

[Molex Connector Corporation](#)
[0397080007](#)

For any questions, you can email us directly:
sales@integrated-circuit.com



M753B-01-1-XX-3
 COLOR
 POSITIONS
 PITCH
 STYLE
 SERIES

SPECIFICATIONS:

- MATERIAL:
 - A. BLOCK: STEEL ZINC PLATED
 - B. SCREW: M2.5, STEEL ZINC PLATED
 - C. BODY: PA66 UL94 V-0
 - D. CAM: STAINLESS STEEL
 - E. COVER: PA66 UL94 V-0
 - F. TERMINAL: BRASS TIN PLATED
- WIRE SIZE: 30 TO 12AWG
- RATING: 15A AT 51-150V, 15A AT 151-300V
- MAX TORQUE: 3.5 IN. LBS. (.4 Nm)
- WIRE STRIP: .37 (9.5mm)
- DIELECTRIC VOLTAGE WITHSTAND: AC 2500V FOR 1 MINUTE
- INSULATION RESISTANCE: DC 500V, 500MΩ
- RATED IMPULSE VOLTAGE: 4000V, PLUS AND MINUS 5 TIMES EACH
- OPERATING TEMPERATURE: -40°C TO +105°C
- DIMS SHOWN ARE FOR REFERENCE ONLY

REF. LAST 2 DIGITS OF PART NUMBER EQUALS CIRCUIT COUNT

PART NUMBER DATA							
CIRCUITS	PART NUMBER	ENGINEERING NUMBER	COLOR	A IN	mm	B IN	mm
2	397080002	M753B-01-1-02-3	GREEN	.42	10.6	.197	5.00
3	397080003	M753B-01-1-03-3	GREEN	.61	15.6	.394	10.00
4	397080004	M753B-01-1-04-3	GREEN	.81	20.6	.590	15.00
5	397080005	M753B-01-1-05-3	GREEN	1.01	25.6	.787	19.99
6	397080006	M753B-01-1-06-3	GREEN	1.20	30.6	.984	24.99
7	397080007	M753B-01-1-07-3	GREEN	1.40	35.6	1.181	29.99
8	397080008	M753B-01-1-08-3	GREEN	1.60	40.6	1.378	34.99
9	397080009	M753B-01-1-09-3	GREEN	1.80	45.6	1.574	39.99
10	397080010	M753B-01-1-10-3	GREEN	1.99	50.6	1.771	44.99
11	397080011	M753B-01-1-11-3	GREEN	2.19	55.6	1.968	49.99
12	397080012	M753B-01-1-12-3	GREEN	2.39	60.6	2.165	54.99
13		M753B-01-1-13-3	GREEN	2.58	65.6	2.362	59.98
14		M753B-01-1-14-3	GREEN	2.78	70.6	2.558	64.98
15		M753B-01-1-15-3	GREEN	2.98	75.6	2.755	69.98
16		M753B-01-1-16-3	GREEN	3.17	80.6	2.952	74.98
17		M753B-01-1-17-3	GREEN	3.37	85.6	3.149	79.98
18		M753B-01-1-18-3	GREEN	3.57	90.6	3.346	84.98
19		M753B-01-1-19-3	GREEN	3.76	95.6	3.542	89.98
20		M753B-01-1-20-3	GREEN	3.96	100.6	3.739	94.98
21		M753B-01-1-21-3	GREEN	4.16	105.6	3.936	99.97
22		M753B-01-1-22-3	GREEN	4.35	110.6	4.133	104.97
23		M753B-01-1-23-3	GREEN	4.55	115.6	4.330	109.97
24		M753B-01-1-24-3	GREEN	4.75	120.6	4.526	114.97

CONTACT FACTORY FOR OPTIONAL COLORS

RELEASED EC NO: JPC2014-1633 DRWN: RSTONE 2014/03/17 CHKD: --- APPR: JFMURPHY 2014/10/16 A	QUALITY SYMBOL ▽=0 ▽=0	GENERAL TOLERANCES (UNLESS SPECIFIED)		DIMENSION STYLE		SCALE	DESIGN UNITS	THIRD ANGLE PROJECTION	
				IN/MM		---	METRIC	☉	
		4 PLACES	±---	±---	DRAWN BY	DATE	TITLE		
		3 PLACES	±---	±.005	RSTONE	2014/03/17	TERMINAL PLUG, 5.0MM HORIZONTAL SCREW		
2 PLACES	±0.13	±.01	CHECKED BY	DATE	---				
1 PLACE	±0.3	±---	APPROVED BY	DATE	---				
ANGULAR ±---		DRAFT WHERE APPLICABLE MUST REMAIN WITHIN DIMENSIONS		JFMURPHY	2014/10/16	MOLEX INCORPORATED			
				MATERIAL NO.	DOCUMENT NO.	SHEET NO.			
				SEE CHART		SD-39708-001			
				SIZE C		1 OF 1			
THIS DRAWING CONTAINS INFORMATION THAT IS PROPRIETARY TO MOLEX INCORPORATED AND SHOULD NOT BE USED WITHOUT WRITTEN PERMISSION									