

Excellent Integrated System Limited

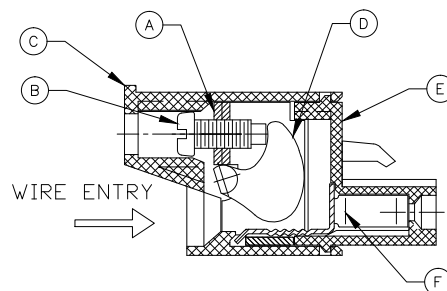
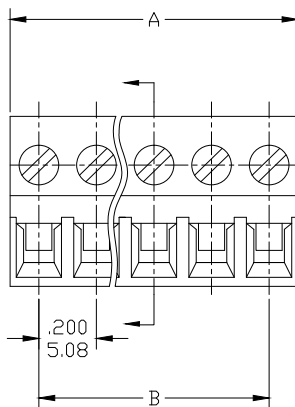
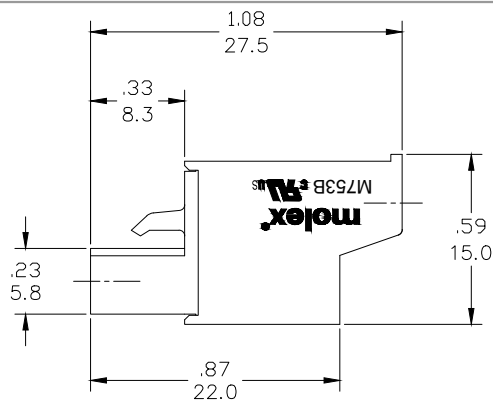
Stocking Distributor

Click to view price, real time Inventory, Delivery & Lifecycle Information:

[Molex Connector Corporation](#)
[0397090007](#)

For any questions, you can email us directly:

sales@integrated-circuit.com



REF. LAST 2 DIGITS OF PART NUMBER EQUALS CIRCUIT COUNT

M753B-01-2-XX-3


SERIES
STYLE
PITCH
POSITIONS
COLOR



SPECIFICATIONS:

- MATERIAL:
 - BLOCK: STEEL ZINC PLATED
 - SCREW: M2.5, STEEL ZINC PLATED
 - BODY: PA66 UL94 V-0
 - CAM: STAINLESS STEEL
 - COVER: PA66 UL94 V-0
 - TERMINAL: BRASS TIN PLATED
- WIRE SIZE: 30 TO 12AWG
- RATING: 15A AT 51-150V, 15A AT 151-300V
- MAX TORQUE: 3.5 IN. LBS. (.4 Nm)
- WIRE STRIP: .37 (9.5mm)
- DIELECTRIC VOLTAGE WITHSTAND: AC 2500V FOR 1 MINUTE
- INSULATION RESISTANCE: DC 500V, 500MΩ
- RATED IMPULSE VOLTAGE: 4000V, PLUS AND MINUS 5 TIMES EACH
- OPERATING TEMPERATURE: -40°C TO +105°C
- DIMS SHOWN ARE FOR REFERENCE ONLY

PART NUMBER DATA							
CIRCUITS	PART NUMBER	ENGINEERING NUMBER	COLOR	A IN	mm	B IN	mm
2	397090002	M753B-01-2-02-3	GREEN	.42	10.8	.200	5.08
3	397090003	M753B-01-2-03-3	GREEN	.62	15.8	.400	10.15
4	397090004	M753B-01-2-04-3	GREEN	.82	20.9	.600	15.23
5	397080005	M753B-01-2-05-3	GREEN	1.02	26.0	.800	20.31
6	397090006	M753B-01-2-06-3	GREEN	1.22	31.1	1.000	25.39
7	397090007	M753B-01-2-07-3	GREEN	1.42	36.2	1.199	30.46
8	397090008	M753B-01-2-08-3	GREEN	1.62	41.2	1.399	35.54
9	397090009	M753B-01-2-09-3	GREEN	1.82	46.3	1.599	40.62
10	397090010	M753B-01-2-10-3	GREEN	2.02	51.4	1.799	45.70
11	397090011	M753B-01-2-11-3	GREEN	2.22	56.5	1.999	50.77
12	397090012	M753B-01-2-12-3	GREEN	2.42	61.6	2.199	55.85
13		M753B-01-2-13-3	GREEN	2.62	66.6	2.399	60.93
14		M753B-01-2-14-3	GREEN	2.82	71.7	2.599	66.01
15		M753B-01-2-15-3	GREEN	3.02	76.8	2.799	71.08
16		M753B-01-2-16-3	GREEN	3.22	81.9	2.999	76.16
17		M753B-01-2-17-3	GREEN	3.42	87.0	3.198	81.24
18		M753B-01-2-18-3	GREEN	3.62	92.0	3.398	86.32
19		M753B-01-2-19-3	GREEN	3.82	97.1	3.598	91.39
20		M753B-01-2-20-3	GREEN	4.02	102.2	3.798	96.47
21		M753B-01-2-21-3	GREEN	4.22	107.3	3.998	101.55
22		M753B-01-2-22-3	GREEN	4.42	112.4	4.198	106.63
23		M753B-01-2-23-3	GREEN	4.62	117.4	4.398	111.70
24		M753B-01-2-24-3	GREEN	4.82	122.5	4.598	116.78

CONTACT FACTORY FOR OPTIONAL COLORS

RELEASED EC NO: IPG2014-1533 DRWN: RSTONE DATE: 2014/03/17 CHKD: JF APPR: JFMURPHY 2014/10/16	REV -- -- -- -- -- -- -- -- -- --	QUALITY SYMBOL ▽=0 ▽C=0	GENERAL TOLERANCES (UNLESS SPECIFIED)		DIMENSION STYLE		SCALE	DESIGN UNITS	 THIRD ANGLE PROJECTION
					IN/MM		---	METRIC	
					DRAWN BY	DATE	TITLE		
					RSTONE	2014/03/17	TERMINAL PLUG, 5.08MM HORIZONTAL SCREW		
					CHECKED BY	DATE	-----		
					APPROVED BY	DATE	MOLEX MOLEX INCORPORATED		
					JFMURPHY	2014/10/16	SD-39709-001		
					MATERIAL NO.		DOCUMENT NO.		
					SEE CHART		1 OF 1		
					SIZE C		THIS DRAWING CONTAINS INFORMATION THAT IS PROPRIETARY TO MOLEX INCORPORATED AND SHOULD NOT BE USED WITHOUT WRITTEN PERMISSION		

DIMENSION STYLE IN/MM		SCALE ----	DESIGN UNITS METRIC		THIRD ANGLE PROJECTION
DRAWN BY RSTONE	DATE 2014/03/17	TITLE TERMINAL PLUG, 5.08MM HORIZONTAL SCREW			
CHECKED BY ----	DATE ----				
APPROVED BY JFMURPHY	DATE 2014/10/16			MOLEX INCORPORATED	
MATERIAL NO. SEE CHART		DOCUMENT NO. SD-39709-001			SHEET NO. 1 OF 1
SIZE C	THIS DRAWING CONTAINS INFORMATION THAT IS PROPRIETARY TO MOLEX INCORPORATED AND SHOULD NOT BE USED WITHOUT WRITTEN PERMISSION				