

Excellent Integrated System Limited

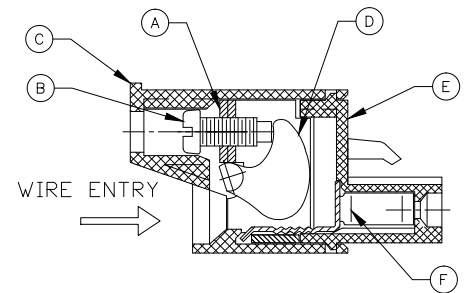
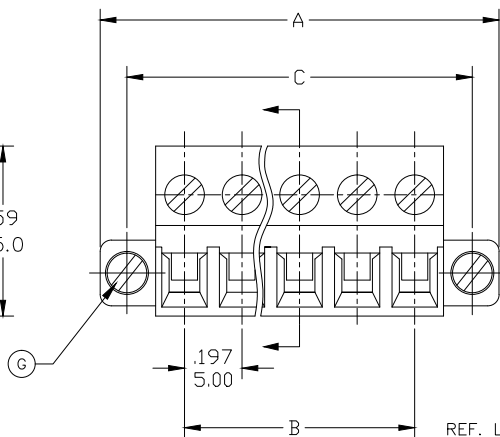
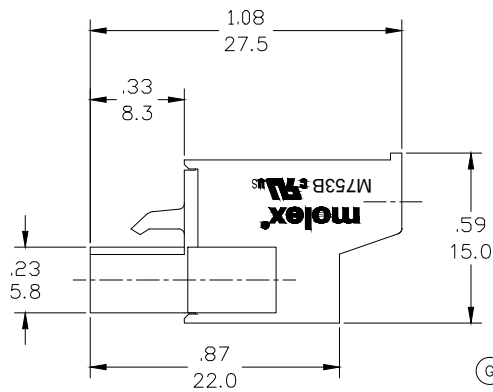
Stocking Distributor

Click to view price, real time Inventory, Delivery & Lifecycle Information:

[Molex Connector Corporation](#)
[0397100011](#)

For any questions, you can email us directly:

sales@integrated-circuit.com



REF. LAST 2 DIGITS OF PART NUMBER EQUALS CIRCUIT COUNT

M753B-00-1-XX-3

COLOR
POSITIONS
PITCH
STYLE
SERIES

SPECIFICATIONS:

1. MATERIAL:

- A. BLOCK: STEEL ZINC PLATED
- B. SCREW: M2.5, STEEL ZINC PLATED
- C. BODY: PA66 UL94 V-0
- D. CAM: STAINLESS STEEL
- E. COVER: PA66 UL94 V-0
- F. TERMINAL: BRASS TIN PLATED
- G. MOUNTING SCREW: M2.5, STEEL ZINC PLATED

2. WIRE SIZE: 30 TO 12AWG

3. RATING: 15A AT 51-150V, 15A AT 151-300V

4. MAX TORQUE: 3.5 IN. LBS. (.4 Nm)

5. WIRE STRIP: .37 (9.5mm)

6. DIELECTRIC VOLTAGE WITHSTAND: AC 2500V FOR 1 MINUTE

7. INSULATION RESISTANCE: DC 500V, 500MΩ


8. RATED IMPULSE VOLTAGE: 4000V, PLUS AND MINUS 5 TIMES EACH

9. OPERATING TEMPERATURE: -40°C TO +105°C

10. DIMS SHOWN ARE FOR REFERENCE ONLY

| PART NUMBER DATA | | | | | | | | | | |
|------------------|-------------|--------------------|-------|------|-------|-------|--------|-------|--------|--|
| CIRCUITS | PART NUMBER | ENGINEERING NUMBER | COLOR | A IN | mm | B IN | mm | C IN | mm | |
| 2 | 397100002 | M753B-00-1-02-3 | GREEN | .78 | 19.8 | .197 | 5.00 | .591 | 15.00 | |
| 3 | 397100003 | M753B-00-1-03-3 | GREEN | .98 | 24.8 | .394 | 10.00 | .787 | 20.01 | |
| 4 | 397100004 | M753B-00-1-04-3 | GREEN | 1.17 | 29.8 | .590 | 15.00 | .984 | 25.00 | |
| 5 | 397100005 | M753B-00-1-05-3 | GREEN | 1.37 | 34.8 | .787 | 19.99 | 1.181 | 30.00 | |
| 6 | 397100006 | M753B-00-1-06-3 | GREEN | 1.57 | 39.8 | .984 | 24.99 | 1.378 | 35.00 | |
| 7 | 397100007 | M753B-00-1-07-3 | GREEN | 1.76 | 44.8 | 1.181 | 29.99 | 1.575 | 40.00 | |
| 8 | 397100008 | M753B-00-1-08-3 | GREEN | 1.96 | 49.8 | 1.378 | 34.99 | 1.772 | 45.00 | |
| 9 | 397100009 | M753B-00-1-09-3 | GREEN | 2.16 | 54.8 | 1.574 | 39.99 | 1.969 | 50.00 | |
| 10 | 397100010 | M753B-00-1-10-3 | GREEN | 2.35 | 59.8 | 1.771 | 44.99 | 2.165 | 55.00 | |
| 11 | 397100011 | M753B-00-1-11-3 | GREEN | 2.55 | 64.8 | 1.968 | 49.99 | 2.362 | 60.00 | |
| 12 | 397100012 | M753B-00-1-12-3 | GREEN | 2.75 | 69.8 | 2.165 | 54.99 | 2.559 | 65.00 | |
| 13 | | M753B-00-1-13-3 | GREEN | 2.95 | 74.8 | 2.362 | 59.98 | 2.756 | 70.00 | |
| 14 | | M753B-00-1-14-3 | GREEN | 3.14 | 79.8 | 2.558 | 64.98 | 2.953 | 75.00 | |
| 15 | | M753B-00-1-15-3 | GREEN | 3.34 | 84.8 | 2.755 | 69.98 | 3.150 | 80.00 | |
| 16 | | M753B-00-1-16-3 | GREEN | 3.54 | 89.8 | 2.952 | 74.98 | 3.346 | 85.00 | |
| 17 | | M753B-00-1-17-3 | GREEN | 3.73 | 94.8 | 3.149 | 79.98 | 3.543 | 90.00 | |
| 18 | | M753B-00-1-18-3 | GREEN | 3.93 | 99.8 | 3.346 | 84.98 | 3.740 | 95.00 | |
| 19 | | M753B-00-1-19-3 | GREEN | 4.13 | 104.8 | 3.542 | 89.98 | 3.937 | 100.00 | |
| 20 | | M753B-00-1-20-3 | GREEN | 4.32 | 109.8 | 3.739 | 94.98 | 4.134 | 105.00 | |
| 21 | | M753B-00-1-21-3 | GREEN | 4.52 | 114.8 | 3.936 | 99.97 | 4.331 | 110.00 | |
| 22 | | M753B-00-1-22-3 | GREEN | 4.72 | 119.8 | 4.133 | 104.97 | 4.528 | 115.00 | |
| 23 | | M753B-00-1-23-3 | GREEN | 4.91 | 124.8 | 4.330 | 109.97 | 4.724 | 120.00 | |
| 24 | | M753B-00-1-24-3 | GREEN | 5.11 | 129.8 | 4.526 | 114.97 | 4.921 | 125.00 | |

CONTACT FACTORY FOR OPTIONAL COLORS

| | | | | | | | | | | | | | | | | |
|----------|--------------------|--------------|----------------|---|------------------|-------------|-----|----------------|--|--|---------------------|--|--|--------------|---|------------------------|
| RELEASED | EC NO: PG2014-1533 | DRWN: RSTONE | CHKD: JFMURPHY | APPR: JFMURPHY | DATE: 2014/03/19 | DESCRIPTION | REV | QUALITY SYMBOL | GENERAL TOLERANCES (UNLESS SPECIFIED) | | DIMENSION STYLE | | SCALE | DESIGN UNITS |  | THIRD ANGLE PROJECTION |
| | | | | | | | | | | | IN/MM | | --- | METRIC | | |
| | | | | | | | | | | | DRAWN BY DATE | | TITLE | | | |
| | | | | | | | | | 4 PLACES ±.--- | | RSTONE 2014/03/17 | | TERMINAL PLUG, 5.0MM HORIZONTAL SCREW WITH MOUNTING ENDS | | | |
| | | | | | | | | | 3 PLACES ±.---.005 | | CHECKED BY DATE | | | | | |
| | | | | | | | | | 2 PLACES ±0.13 ±.01 | | --- | | | | | |
| | | | | | | | | | 1 PLACE ±0.3 | | APPROVED BY DATE | | | | | |
| | | | | | | | | | ANGULAR ±.° | | JFMURPHY 2014/10/16 | | MOLEX INCORPORATED | | | |
| | | | | | | | | | DRAFT WHERE APPLICABLE MUST REMAIN WITHIN DIMENSIONS | | MATERIAL NO. | | DOCUMENT NO. | | | |
| | | | | | | | | | | | SEE CHART | | SD-39710-001 | | | |
| | | SIZE | | SHEET NO. | | | | | | | | | | | | |
| | | C | | 1 OF 1 | | | | | | | | | | | | |
| | | | | THIS DRAWING CONTAINS INFORMATION THAT IS PROPRIETARY TO MOLEX INCORPORATED AND SHOULD NOT BE USED WITHOUT WRITTEN PERMISSION | | | | | | | | | | | | |